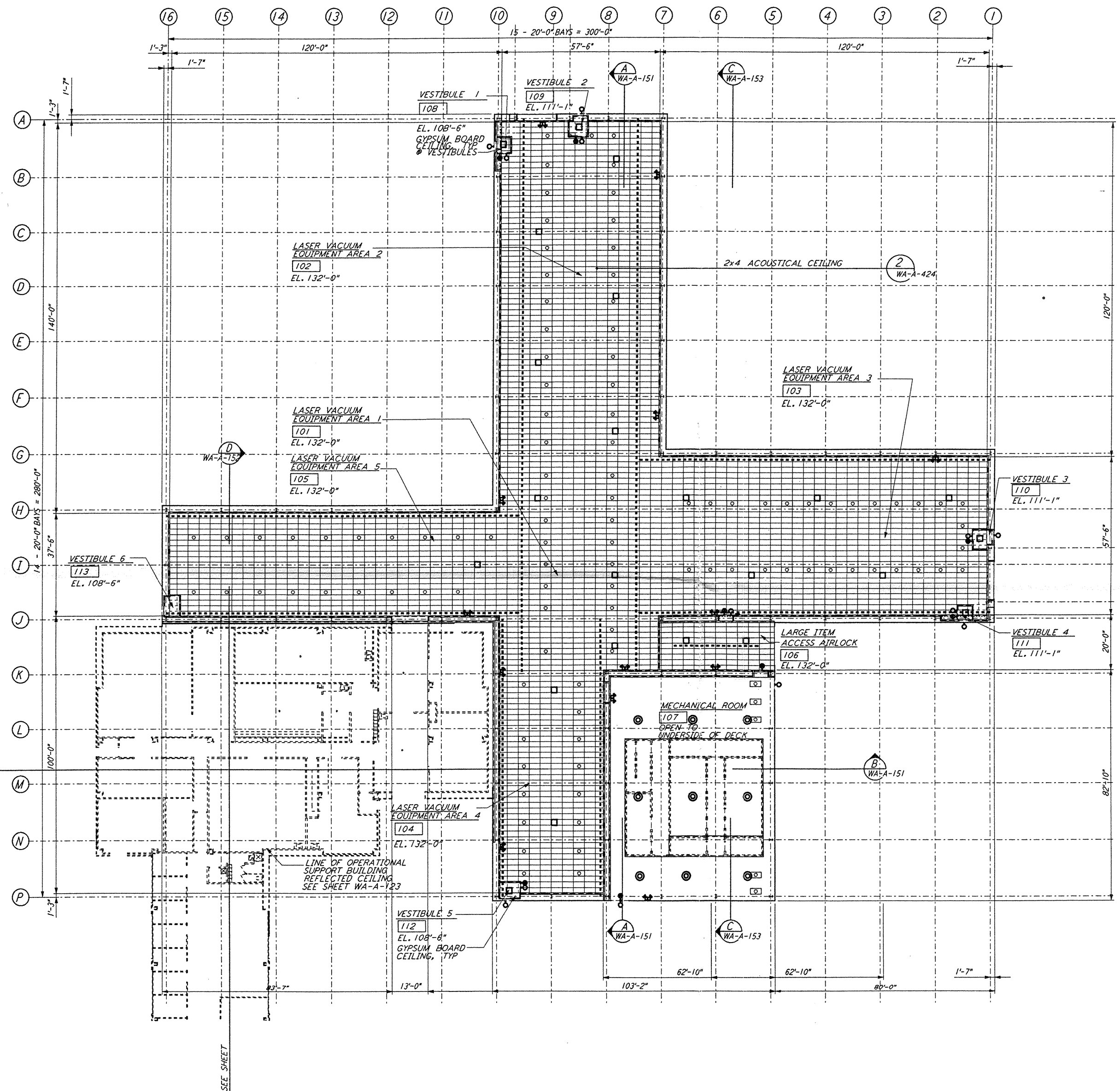
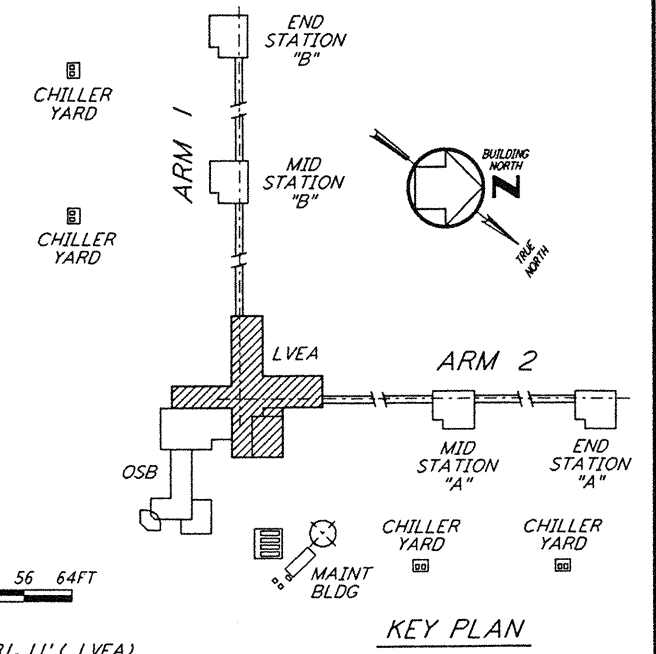


NOTE:  
CEILING GRID TO  
FRAME AROUND CRANE  
SUPPORTS EVERY 20'-0" O. C. SEE 17  
WA-A-424



not be reproduced, copied, loaned, exhibited, or used in any other way, except by written consent from PARSONS to the borrower.

This document and the design it covers are the property of PARSONS. They are loaned only with the borrower's expressed written agreement that they will



0 8 16 24 32 40 48 56 64 FT  
1" = 1'-0"  
DATUM POINT EL +100.00 = 531.11' (LVEA)  
DATUM POINT EL +100.00 = 531.11' (OSB)

NO.	DATE	BY	CHKD	ENGR	PROJ	DESCRIPTION
B	4-19-96	SF	SF	TDM		FINAL DESIGN REVIEW
A	01/17/96	SF	SF	TDM		PRELIMINARY DESIGN REVIEW

DRAWN	CKT
CHECKED	
ENGINEER	
PROJ	

**PARSONS**  
100 WEST WALNUT STREET  
PASADENA, CALIFORNIA

**LIGO**  
CALIFORNIA INSTITUTE OF TECHNOLOGY  
MASSACHUSETTS INSTITUTE OF TECHNOLOGY

LASER INTERFEROMETER  
GRAVITATIONAL-WAVE OBSERVATORY  
SITE NO. 1 - HANFORD, WASHINGTON

ARCHITECTURAL  
CORNER STATION  
LVEA REFLECTED CEILING PLAN

AS NOTED  
SHEET NUMBER  
WA-A-121

CONTRACT NUMBER  
PP150969

PROJECT NUMBER  
8094

REVISIONS  
B