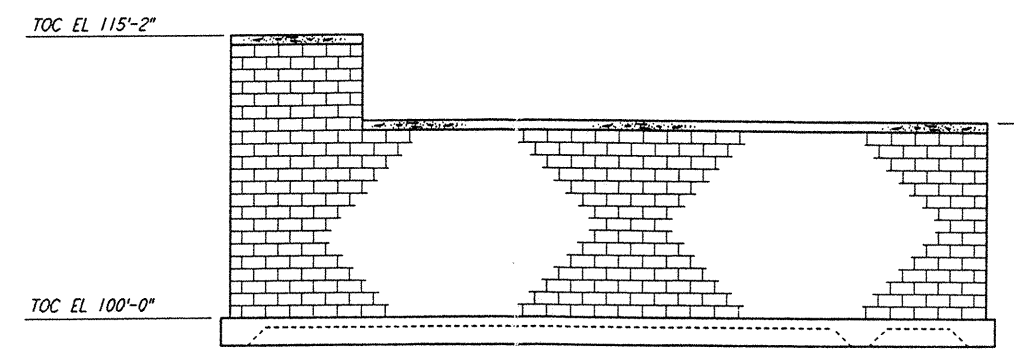
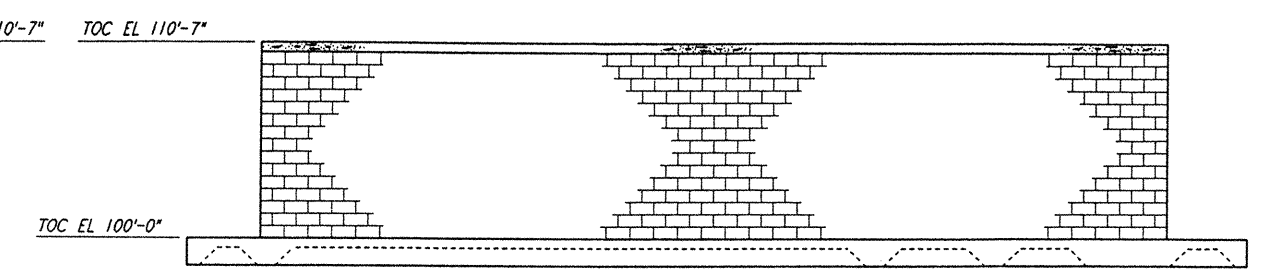


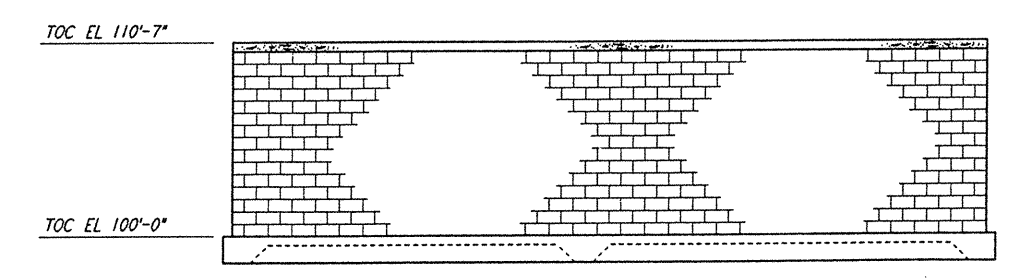
ELEVATION A REF
 $\frac{3}{8}'' = 1'-0''$
 WA-S-105 WA-S-104



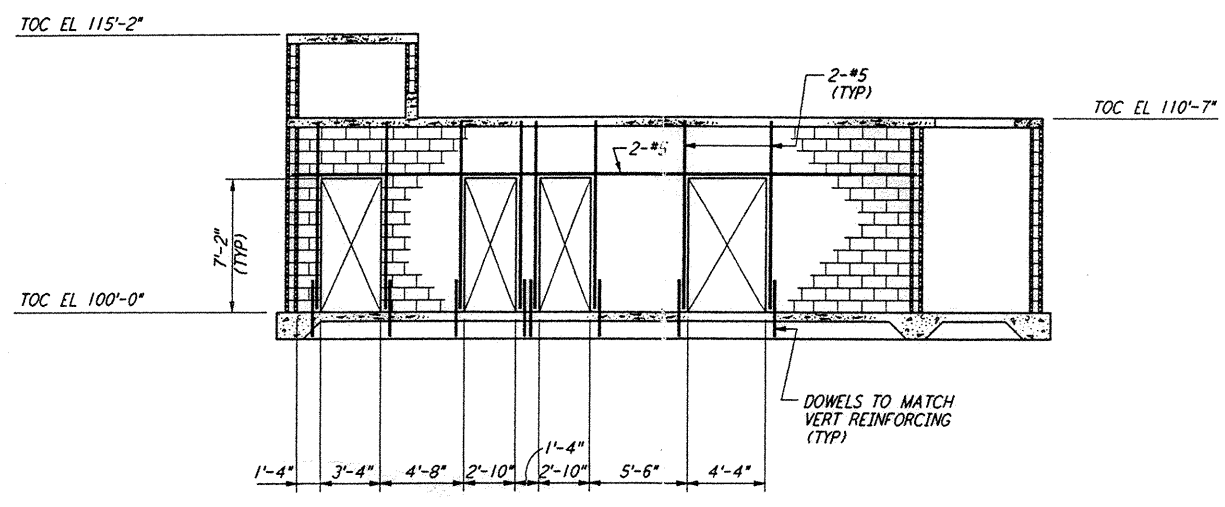
ELEVATION B REF
 $\frac{3}{8}'' = 1'-0''$
 WA-S-105 WA-S-104



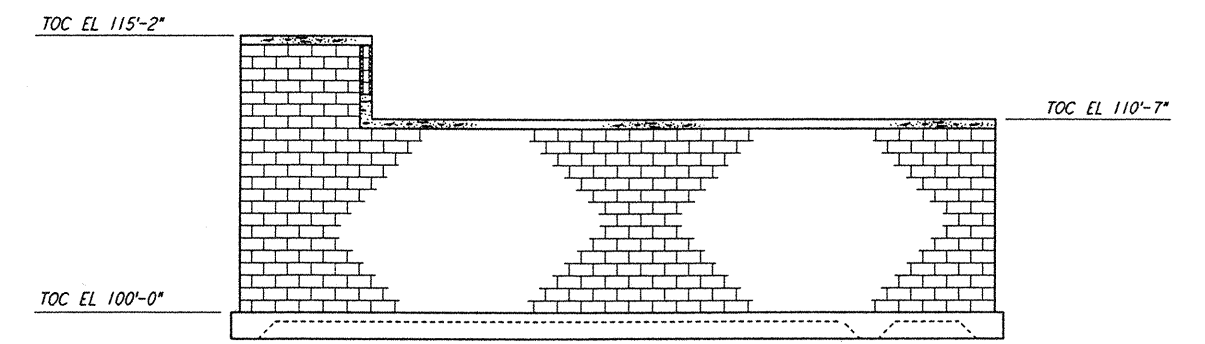
ELEVATION C REF
 $\frac{3}{8}'' = 1'-0''$
 WA-S-105 WA-S-104



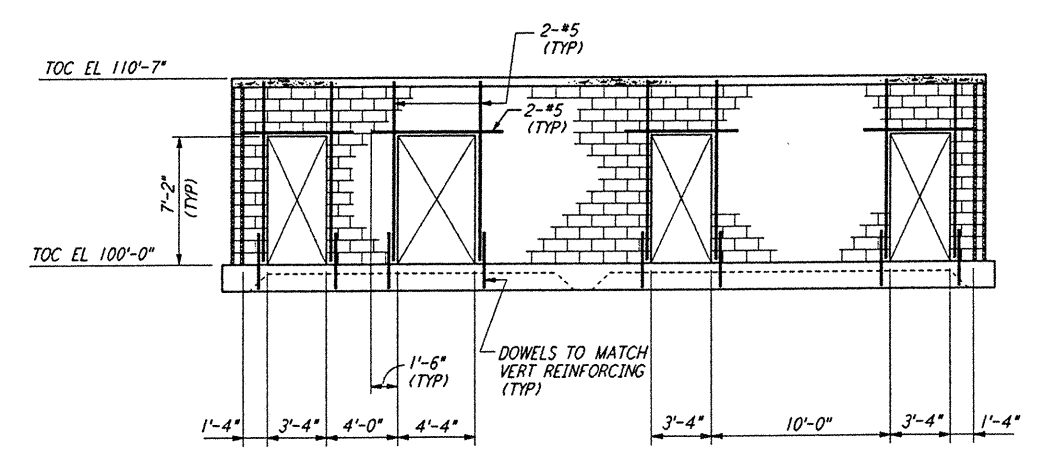
ELEVATION D REF
 $\frac{3}{8}'' = 1'-0''$
 WA-S-105 WA-S-104



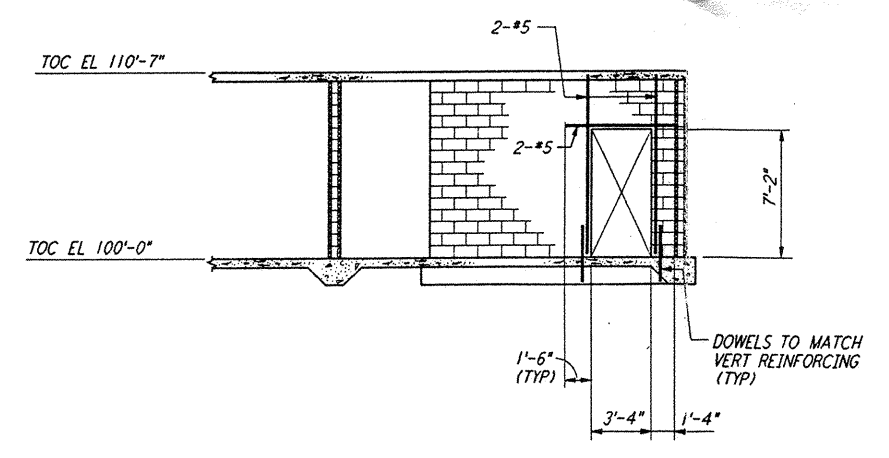
SECTION E REF
 $\frac{3}{8}'' = 1'-0''$
 WA-S-105 WA-S-104



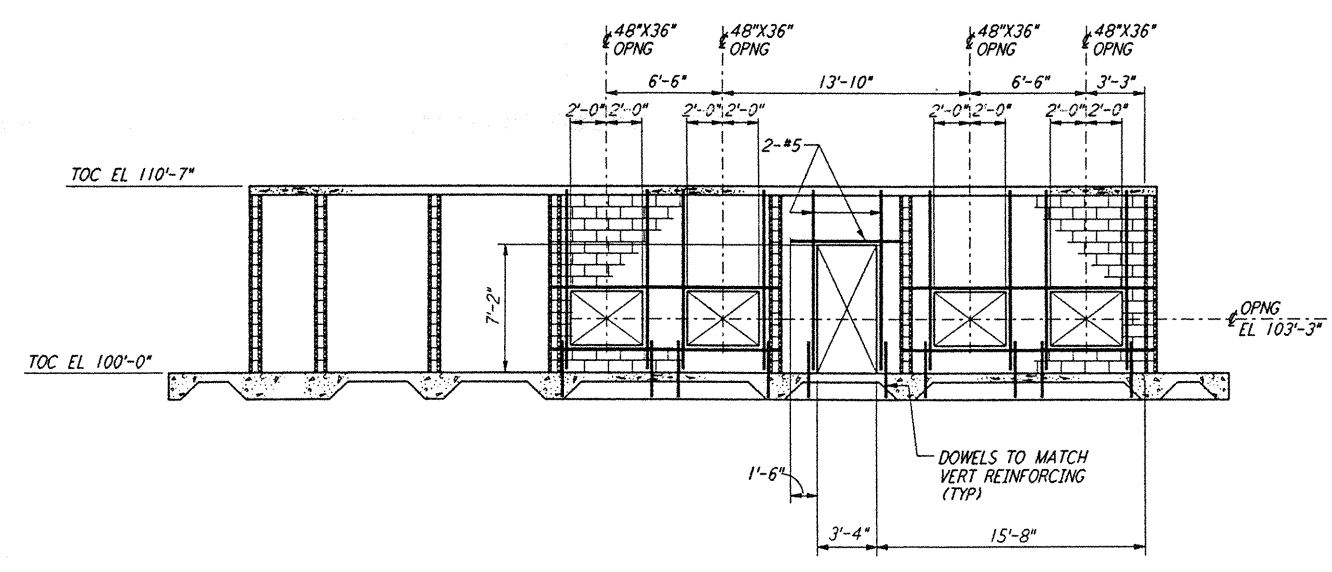
SECTION F REF
 $\frac{3}{8}'' = 1'-0''$
 WA-S-105 WA-S-104



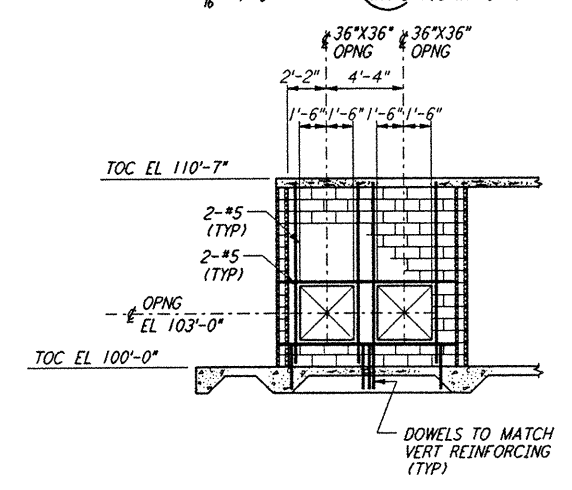
SECTION G REF
 $\frac{3}{8}'' = 1'-0''$
 WA-S-105 WA-S-104



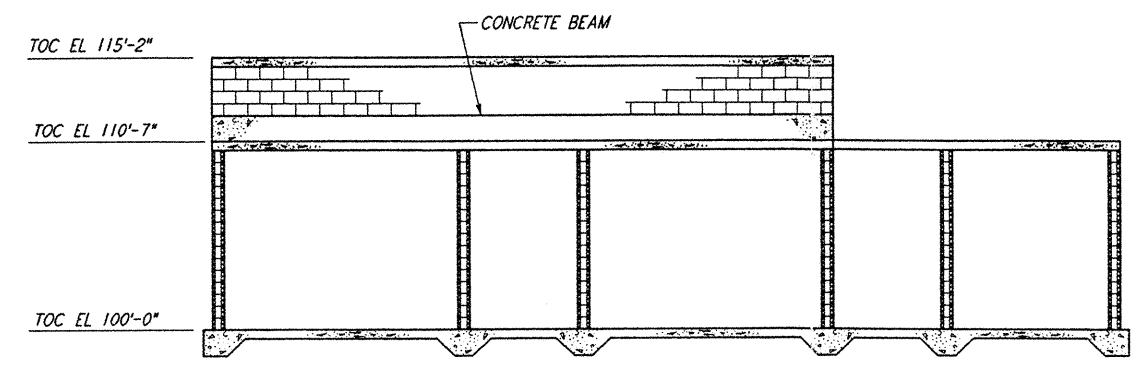
SECTION H REF
 $\frac{3}{8}'' = 1'-0''$
 WA-S-105 WA-S-104



SECTION J REF
 $\frac{3}{8}'' = 1'-0''$
 WA-S-105 WA-S-104

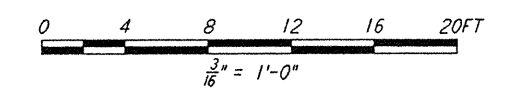


SECTION K REF
 $\frac{3}{8}'' = 1'-0''$
 WA-S-105 WA-S-104



SECTION L REF
 $\frac{3}{8}'' = 1'-0''$
 WA-S-105 WA-S-104

NOTE:
 1. FOR NOTES SEE DRAWING WA-S-104.



This document and the design it covers are the property of PARSONS. They are loaned only with the borrower's expressed written agreement that they will not be reproduced, copied, loaned, exhibited, or used in any other way, except by written consent from PARSONS to the borrower.

NO.	DATE	BY	CHKD	ENGR	PROJ	DESCRIPTION
B	4-19-96	MCS	SSM	MM		FINAL DESIGN REVIEW
A	10-31-95				TDM	PRELIMINARY DESIGN REVIEW

DRAWN	MCS
CHECKED	
ENGINEER	
PROJ	

PARSONS
 100 WEST WALNUT STREET
 PASADENA, CALIFORNIA

LIGO
 CALIFORNIA INSTITUTE OF TECHNOLOGY
 MASSACHUSETTS INSTITUTE OF TECHNOLOGY

LASER INTERFEROMETER
 GRAVITATIONAL-WAVE OBSERVATORY
 SITE NO. 1 - HANFORD, WASHINGTON

STRUCTURAL
 CORNER STATION
 AIR HANDLING UNIT
 ENCLOSURE ELEVS & SECTS

SCALE: AS NOTED
 CONTRACT NUMBER: PP150969
 PROJECT NUMBER: 8094

SHEET NUMBER: **WA-S-105**

LIGO-D960467-B-17