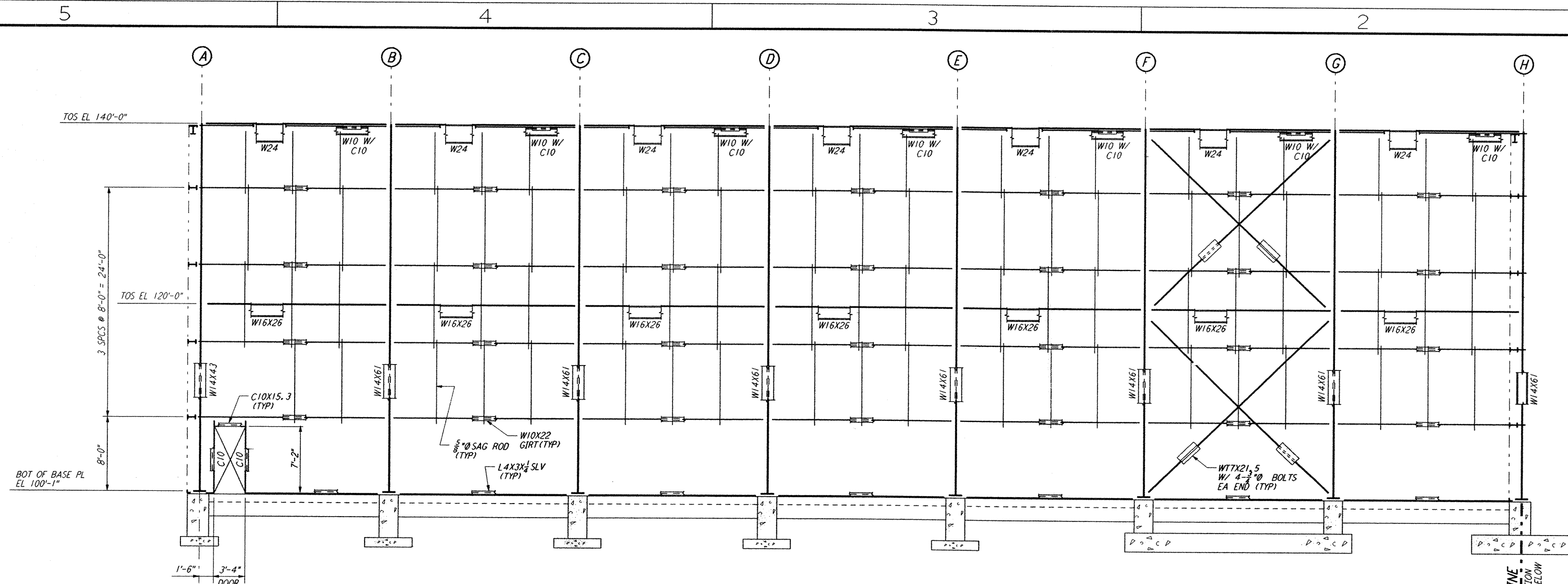
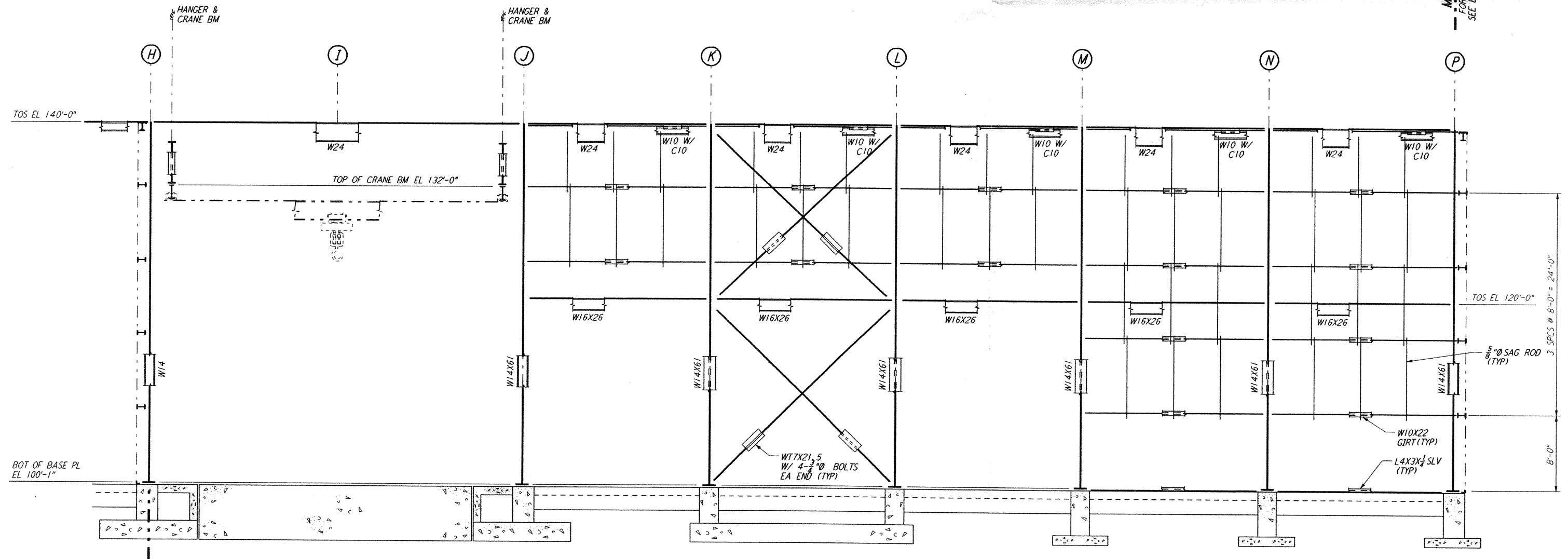


not be reproduced, copied, loaned, exhibited, or used in any other way, except by written consent from PARSONS to the borrower.

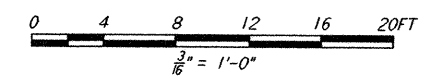
This document and the design it covers are the property of PARSONS. They are loaned only with the borrower's expressed written agreement that they will



PARTIAL ELEVATION AT COLUMN LINE 10
 $\frac{1}{8}'' = 1'-0''$



PARTIAL ELEVATION AT COLUMN LINE 10
 $\frac{1}{8}'' = 1'-0''$



NO.	DATE	APPRO BY	DESCRIPTION OF REVISION

DATE	10-31-95
DRAWN	MCS
CHECKED	
ENGINEER	
PROJ MGR	

NO.	DATE	APPRO BY	ISSUED FOR
A	10-31-95	TDM	PRELIMINARY DESIGN REVIEW

PARSONS
 100 WEST WALNUT STREET
 PASADENA, CALIFORNIA

LIGO
 CALIFORNIA INSTITUTE OF TECHNOLOGY
 MASSACHUSETTS INSTITUTE OF TECHNOLOGY

LIGO-D960474-A-0
 LASER INTERFEROMETER
 GRAVITATIONAL-WAVE OBSERVATORY
 SITE NO. 1 - HANFORD, WASHINGTON

TITLE	AS NOTED	CONTRACT NUMBER	PROJECT NUMBER
CORNER STATION (LVEA)	PP150969	8094	
FRAMING ELEVATIONS			
SHEET 4			

WA-S-111