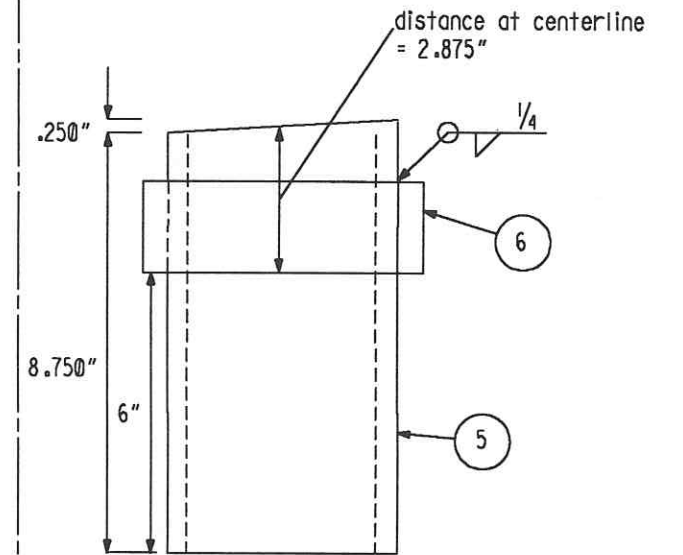
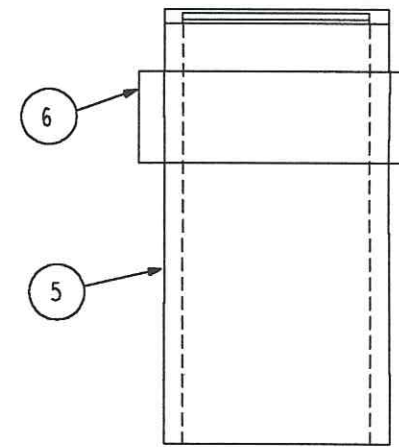
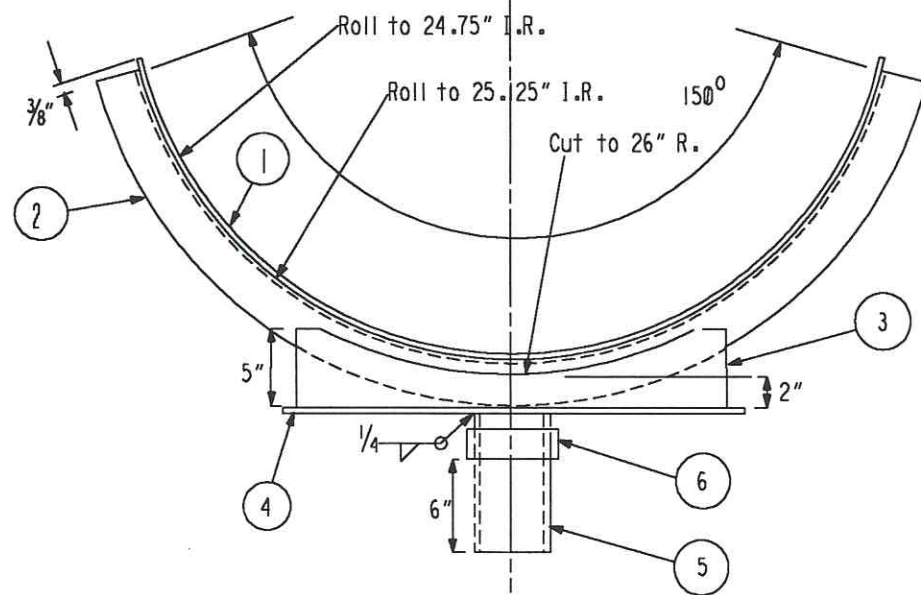


Wt. = 161 lbs.

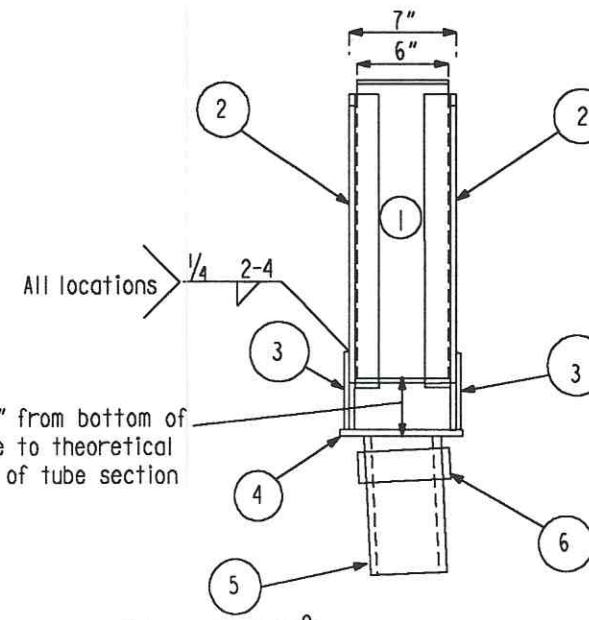
- ① A36 Plate 6" x 66" x 1/4" thk.  
Rolled to 24.75" inside radius (1 pc. req'd.)
- ② A36 angle 3" x 2" x 3/8" x 65.75"  
Rolled to 25.125" inside radius (2 pcs. req'd.)
- ③ A36 plate sk 5" x 1/4" x 28" (2 pcs. req'd.)
- ④ A36 plate 8" x 30" x 3/8" thk. (1 pc. req'd.)
- ⑤ A36 sk. 5" x 5" x 3/8" x 9" long square tubing (1 pc. req'd.)
- ⑥ A36 6" x 6" x 1/2" x 2" long square tubing (1 pc. req'd.)



- ③ A36 sk. 5" x 5" x 3/8" x 9" long square tubing (1 pc. req'd.)
- ⑥ A36 6" x 6" x 1/2" x 2" long square tubing (1 pc. req'd.)



Two Complete Assemblies are Required



Note angle (2.86°) of this square tube

3.75" from bottom of plate to theoretical O.D. of tube section

INDICATES CHANGE FROM PREVIOUS ISSUE

Supplier's/Purchaser's No.		Contract No.	
CBI		953571	
LIGO-BEAM TUBE HANFORD, WA & LIVINGSTON, LA			
CLEANING ROOM EQUIPMENT TUBE SECTION SUPPORT			
Customer's No.		Contract No.	
By EPD Chkd M.L. TELLALIAN Date 6-03-86		M. L. TELLALIAN Rev. 0	
Engineering Supervisor		Sheet	
LIGO-D960519-00-B			