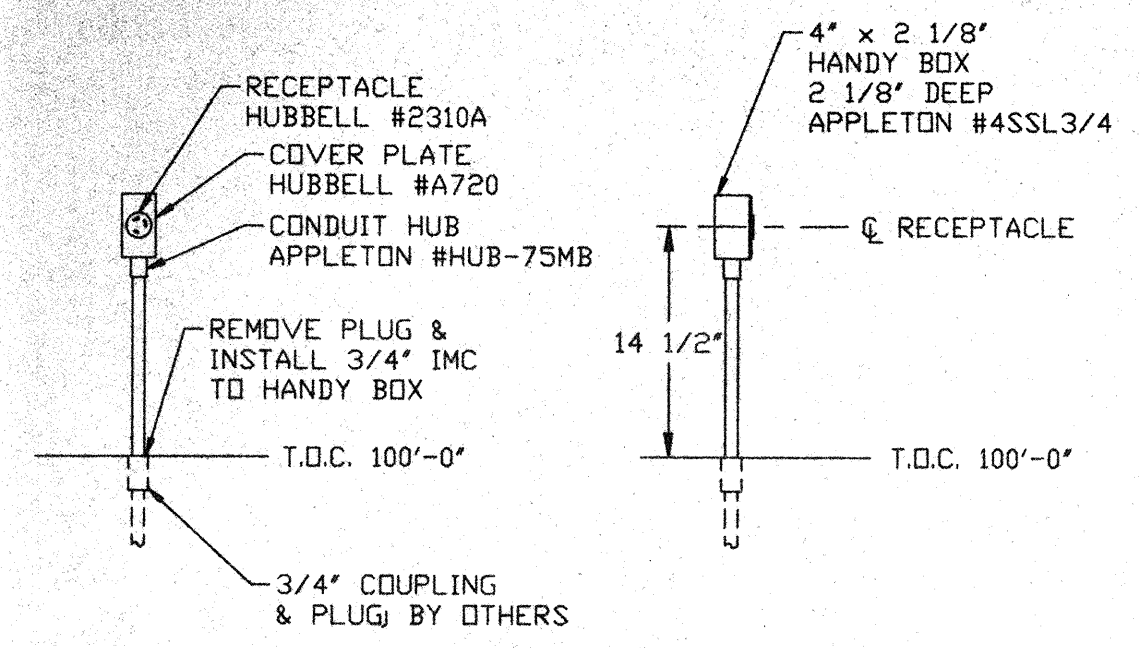
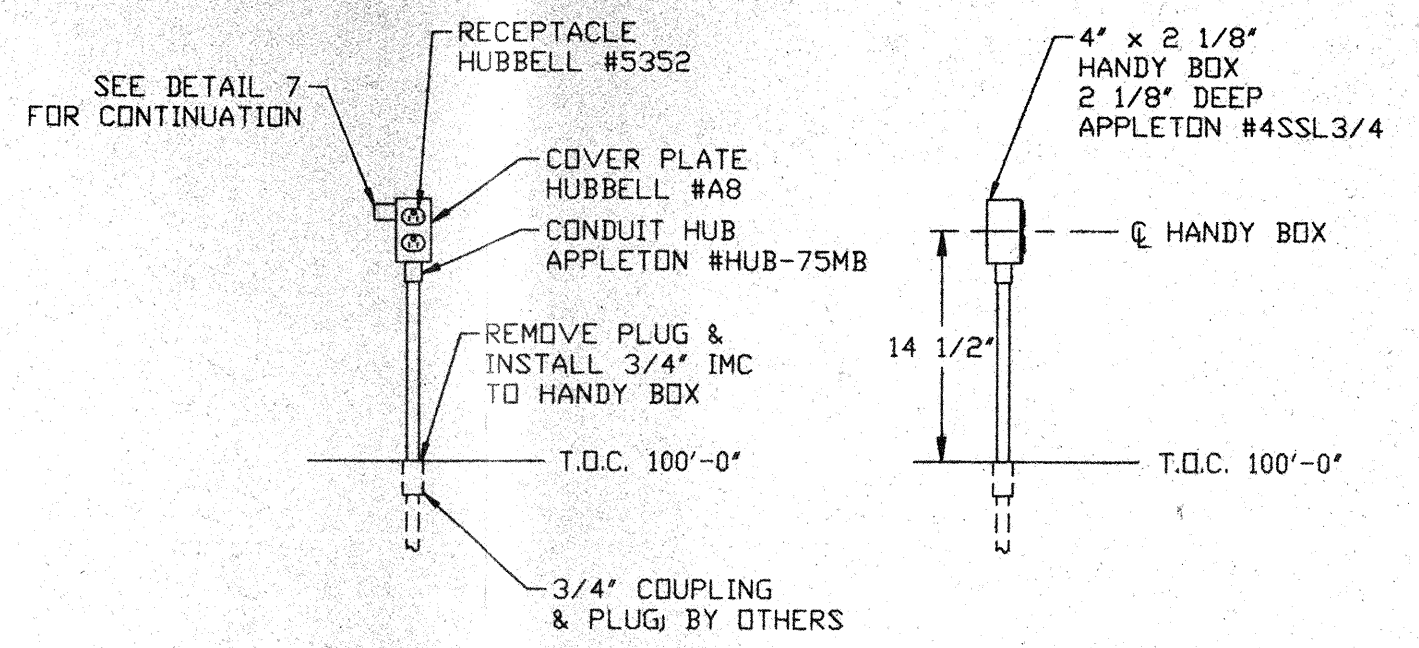


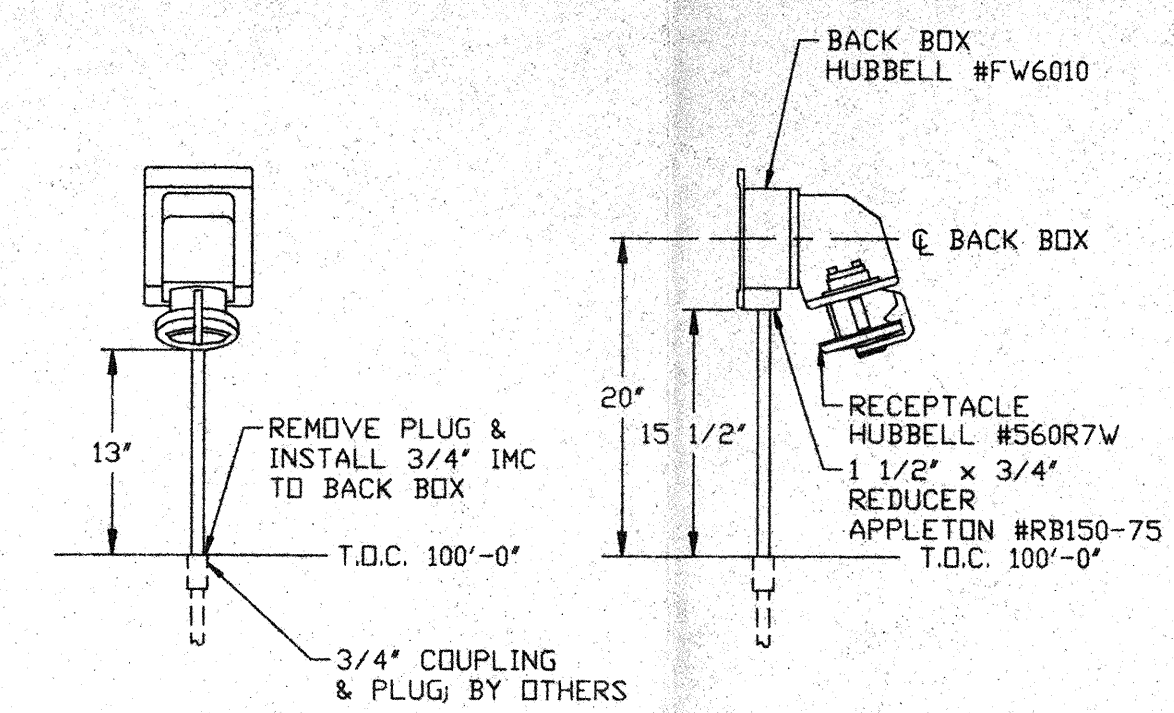
DETAIL 1
SCALE 1" = 1'-0"
BAKEDOUT CART/CLEAN ROOM RECEPTACLE



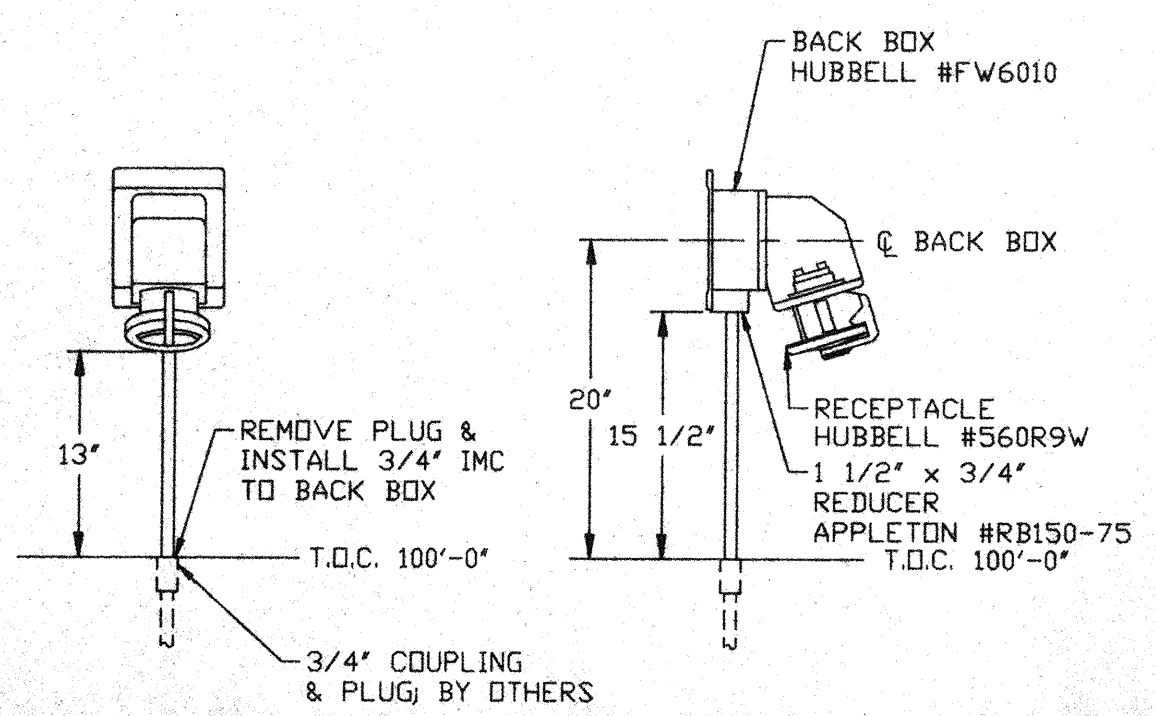
DETAIL 2
SCALE 1" = 1'-0"
BAKEDOUT CART CONTROL RECEPTACLE



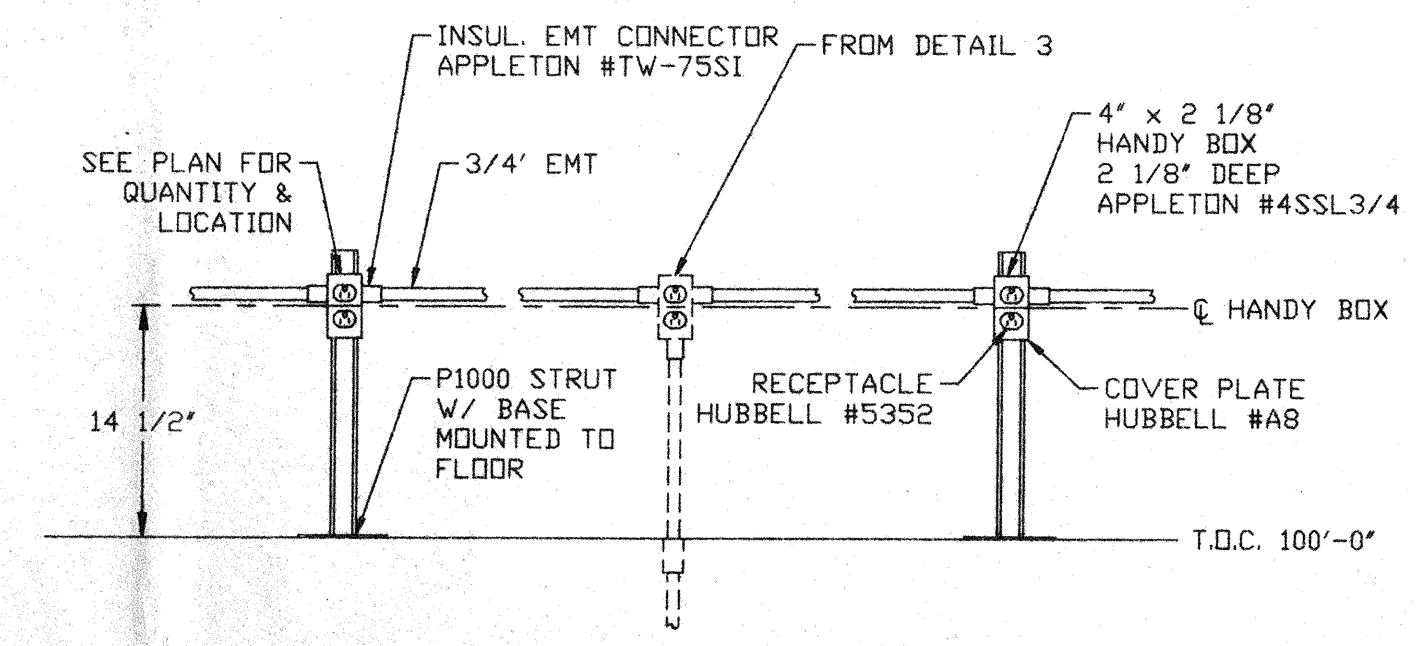
DETAIL 3
SCALE 1" = 1'-0"
GENERAL/IDN PUMP/AUX. TURBO RECEPTACLE



DETAIL 4
SCALE 1" = 1'-0"
ROUGHING PUMP RECEPTACLE

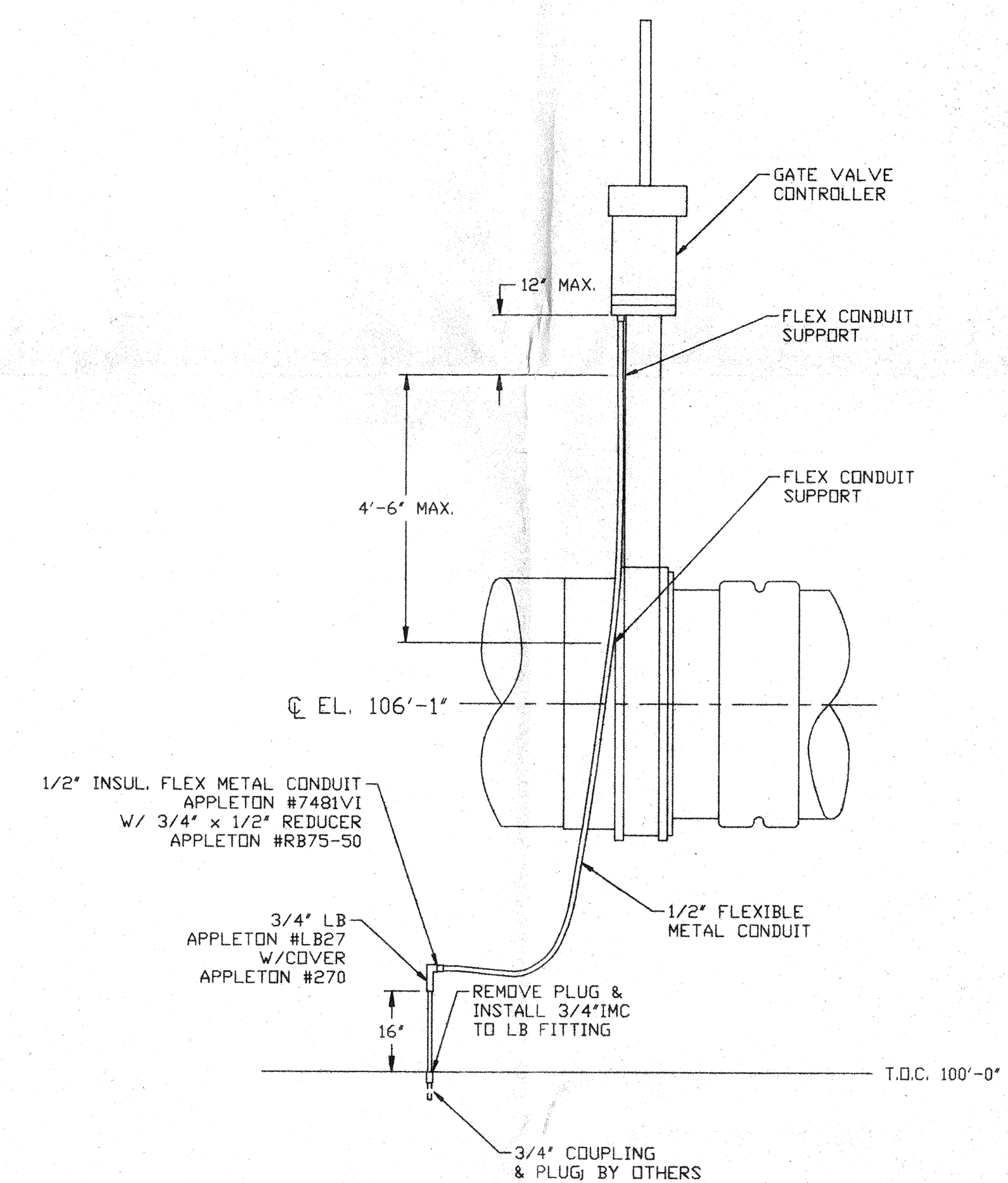


DETAIL 5
SCALE 1" = 1'-0"
TURBO PUMP RECEPTACLE



DETAIL 7
SCALE 1" = 1'-0"
GENERAL/IDN PUMP/AUX. TURBO RECEPTACLE CONTINUATION

DETAIL 8
SCALE 1" = 1'-0"
REGEN HEATER



DETAIL 6
SCALE 1/2" = 1'-0"
GATE VALVE POWER

APR 30 1996

DETAIL 9
SCALE 1" = 1'-0"
AIR COMPRESSOR

DETAIL 10
SCALE 1" = 1'-0"
TURBO BACKING RECEPTACLE

DETAIL 11
SCALE 1" = 1'-0"
ROUGH BACKING

<p>PROPRIETARY AND CONFIDENTIAL</p> <p>THIS DOCUMENT CONTAINS PROPRIETARY INFORMATION BELONGING TO PROCESS SYSTEMS INTERNATIONAL, INC. OR ITS AFFILIATED COMPANIES AND SHALL BE USED ONLY FOR THE PURPOSE FOR WHICH IT WAS SUPPLIED. IT SHALL NOT BE COPIED, REPRODUCED OR OTHERWISE USED, NOR SHALL SUCH INFORMATION BE FURNISHED IN WHOLE OR IN PART TO OTHERS EXCEPT IN ACCORDANCE WITH THE TERMS OF ANY AGREEMENT UNDER WHICH IT WAS SUPPLIED OR WITH THE PRIOR WRITTEN CONSENT OF PROCESS SYSTEMS INTERNATIONAL, INC. AND SHALL BE RETURNED UPON REQUEST.</p>		<p>UNLESS OTHERWISE SPECIFIED DIMENSIONS ARE IN INCHES</p> <p>TOLERANCES:</p> <p>FRACTIONAL ±</p> <p>ANGULAR/MACH 30°-30' BEND ±2°</p> <p>TWO PLACE DECIMAL ±.01</p> <p>THREE PLACE DECIMAL ±.005</p> <p>FINISHED SURFACE RMS</p> <p>BREAK CORNERS IN OUT</p> <p>REMOVE ALL BURRS</p>		<p>DO NOT SCALE THIS DRAWING</p> <p>USED ON:</p> <p>NEXT ASS'Y:</p>		<p>ISSUE FOR FOR</p> <p>REV</p> <p>DESCRIPTION</p> <p>ISSUE DESCRIPTION</p>		<p>DATE</p> <p>04.26.96</p> <p>0129</p>		<p>CHKD</p> <p>DRWN</p>		<p>DATE</p> <p>04.26.96</p> <p>0129</p>		<p>REV</p> <p>0</p>	
DWG. NO.	DESCRIPTION	DWG. NO.	DESCRIPTION	SCALE	AS NOTED	SHEET	1 OF 1	<p>PROCESS SYSTEMS INTERNATIONAL INC.</p> <p>20 WALKUP DR. WESTBOROUGH, MASSACHUSETTS 01581 USA</p> <p>ELECTRICAL INSTALLATION DETAILS</p> <p>LIGO VACUUM EQUIPMENT</p> <p>WASHINGTON SITE & LOUISIANA SITE</p>							

D960548-00-V