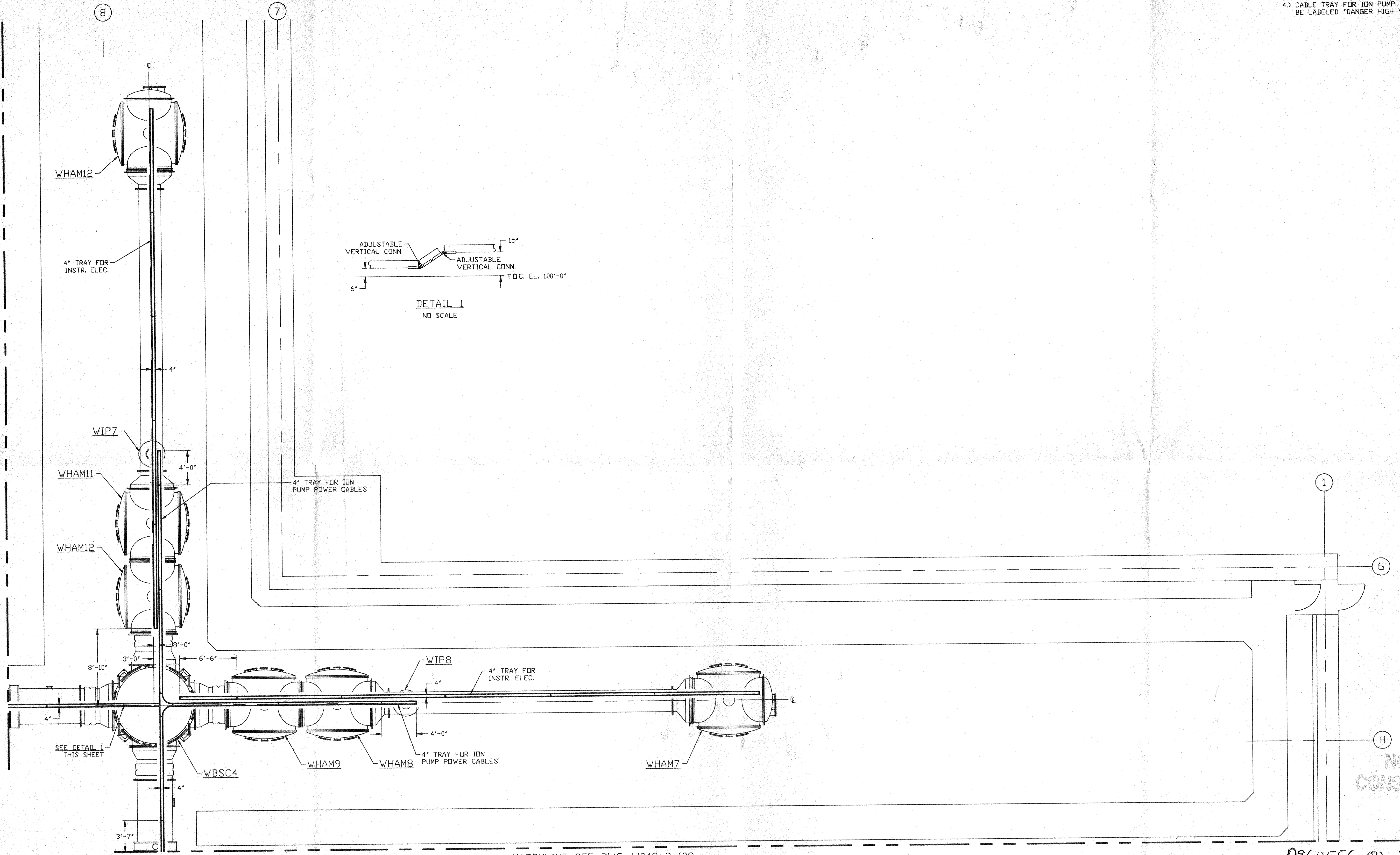


- NOTES:**
- 1) ALL CABLETRAY LENGTHS ARE 12'-0" UNLESS OTHERWISE SPECIFIED.
 - 2) ALL CABLE TRAY SHALL BE GROUNDED PER N.E.C.
 - 3) ALL CABLE TRAY SHALL BE FIELD SUPPORTED.
 - 4) CABLE TRAY FOR ION PUMP POWER CABLES SHALL BE LABELED 'DANGER HIGH VOLTAGE'.

MATCHLINE SEE DWG. V049-3-107



MATCHLINE SEE DWG. V049-3-108

NOT FOR CONSTRUCTION
APR 30 1996

0960556-00-V

PROPRIETARY AND CONFIDENTIAL
THIS DOCUMENT CONTAINS PROPRIETARY INFORMATION BELONGING TO PROCESS SYSTEMS INTERNATIONAL, INC. OR ITS AFFILIATED COMPANIES AND SHALL BE USED ONLY FOR THE PURPOSE FOR WHICH IT WAS SUPPLIED. IT SHALL NOT BE COPIED, REPRODUCED OR OTHERWISE USED, NOR SHALL SUCH INFORMATION BE FURNISHED IN WHOLE OR IN PART TO OTHERS EXCEPT IN ACCORDANCE WITH THE TERMS OF ANY AGREEMENT UNDER WHICH IT WAS SUPPLIED OR WITH THE PRIOR WRITTEN CONSENT OF PROCESS SYSTEMS INTERNATIONAL, INC. AND SHALL BE RETURNED UPON REQUEST.

DWG. NO.	DESCRIPTION	DWG. NO.	DESCRIPTION
V049-3-108	CABLE TRAY PLAN RIGHT BEAM MANIFOLD		
V049-3-107	CABLE TRAY PLAN LEFT BEAM MANIFOLD		
V049-3-002	WASHINGTON OVERALL SITE PLAN		
V049-3-001	GENERAL NOTES & LEGEND		

UNLESS OTHERWISE SPECIFIED DIMENSIONS ARE IN INCHES
TOLERANCES:
FRACTIONAL ±
ANGULARMACH ±0°-30' BEND ±2°
TWO PLACE DECIMAL ±.01
THREE PLACE DECIMAL ±.005
FINISHED SURFACE RMS
BREAK CORNERS IN
REMOVE ALL BURRS

DO NOT SCALE THIS DRAWING
USED ON:
NEXT ASS'Y:

REV	DESCRIPTION	CHKD	DRWN	DATE	DECD
0	ISSUE FOR FDR			04.26.96	0129

PROCESS SYSTEMS INTERNATIONAL, INC.
20 WALKUP DR. WESTBOROUGH, MASSACHUSETTS 01581 USA

CABLE TRAY PLAN
LIGO VACUUM EQUIPMENT
WASHINGTON SITE
DIAGONAL SECTION

CAD FILE V0493109	SIZE D	DWG. NO. V049-3-109	REV 0
SCALE 3/16" = 1' - 0"	SHEET 1 OF 1		