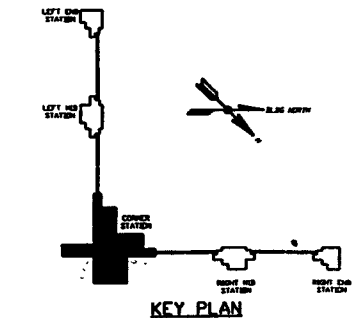
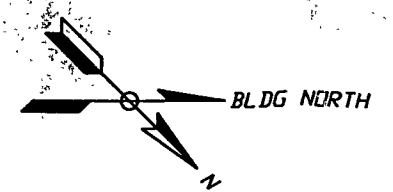
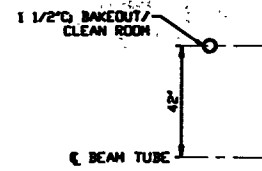


- NOTES:**
- 1) PROVIDE FULL TAPE IN EACH CONDUIT.
 - 2) ALL UNDERGROUND INSTALLATIONS AND DETAILS ARE BY OTHER DRAWINGS.
 - 3) POWER SOURCE/SIGNAL KEYS FOLLOWS:
 - A) BAKEDOUT/CLEAN ROOM 480/277VAC
 - B) ROUGHING CART 480/277VAC
 - C) GATE VALVES 480/277VAC
 - D) GENERAL/ION/PUMPS 120VAC
 - E) BAKEDOUT CONTROL 120VAC
 - F) TURBO CART 208/120VAC
 - 4) FOR EQUIPMENT POWER REQUIREMENTS, REFER TO PSI DOCUMENT: 8V049-1-047.
 - 5) FOR GENERAL NOTES & LEGEND SEE PSI DWG. 8V049-3-001 SHT. 1.
 - 6) FOR LIST OF CIVIL CONTRACTOR REFERENCE DWGS. WITH CURRENT REVISIONS SEE PSI DWG. 8V049-3-001 SHT. 2.

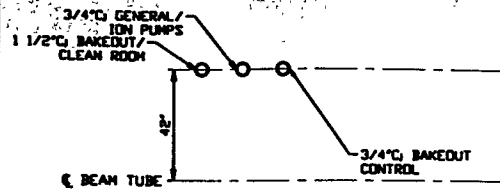


<p>PROPRIETARY AND CONFIDENTIAL</p> <p>THIS DOCUMENT CONTAINS PROPRIETARY INFORMATION BELONGING TO PROCESS SYSTEMS INTERNATIONAL, INC. OR ITS AFFILIATED COMPANIES AND SHALL BE USED ONLY FOR THE PURPOSE FOR WHICH IT WAS SUPPLIED. IT SHALL NOT BE COPIED, REPRODUCED OR OTHERWISE FURNISHED IN WHOLE OR IN PART TO OTHERS EXCEPT IN ACCORDANCE WITH THE TERMS OF ANY AGREEMENT UNDER WHICH IT WAS SUPPLIED OR WITH THE PRIOR WRITTEN CONSENT OF PROCESS SYSTEMS INTERNATIONAL, INC. AND SHALL BE RETURNED UPON REQUEST.</p>				<p>UNLESS OTHERWISE SPECIFIED DIMENSIONS ARE IN INCHES</p> <p>TOLERANCES: FRACTIONAL & DECIMALS: .005" BEND 1/2" TWO PLACE DECIMAL & IN THREE PLACE DECIMAL & .005 FINISHED SURFACE DIM. BEAM CORNERS TO REMOVE ALL BURRS</p> <p>DO NOT SCALE THIS DRAWING</p> <p>USED ON: _____</p> <p>NEXT ASS'Y: _____</p>				<p>1 ISSUE FOR INSTALLATION</p> <p>0 ISSUE FOR FDR</p> <p>REV: _____ DESCRIPTION: _____</p> <p>ISSUE DESCRIPTION: _____</p>				<p>PROCESS SYSTEMS INTERNATIONAL, INC. 20 WALDEN DR. WESTBOROUGH, MASSACHUSETTS 01581 USA</p> <p>ELECTRICAL CONDUIT STUB-UP PLAN LIGO VACUUM EQUIPMENT WASHINGTON SITE CORNER STATION</p> <p>CAD FILE: V0493124\3124S1 SIZE: D DWG. NO.: V049-3-124 REV: 1</p> <p>SCALE: 1" = 10'-0" SHEET: 1 OF 2</p>			
DWG. NO.	DESCRIPTION	DWG. NO.	DESCRIPTION	DWG. NO.	DESCRIPTION	DWG. NO.	DESCRIPTION	DWG. NO.	DESCRIPTION	DWG. NO.	DESCRIPTION	DWG. NO.	DESCRIPTION	DWG. NO.	DESCRIPTION

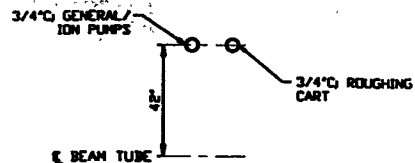
LIGO-D960568-01-V



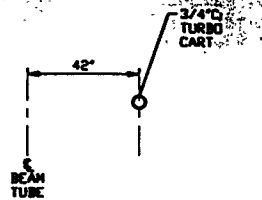
DETAIL 1 REF.
NO SCALE V049-3-124 SHT. 1



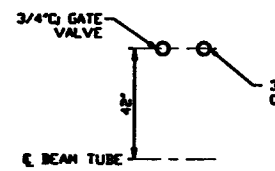
DETAIL 2 REF.
NO SCALE V049-3-124 SHT. 1



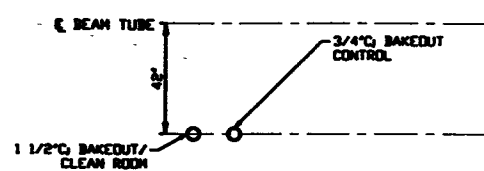
DETAIL 3 REF.
NO SCALE V049-3-124 SHT. 1



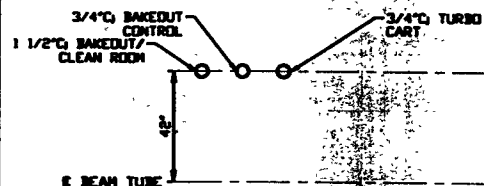
DETAIL 4 REF.
NO SCALE V049-3-124 SHT. 1



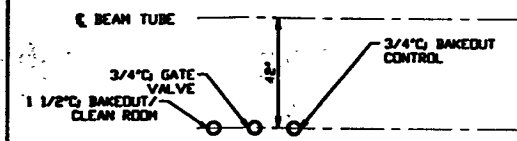
DETAIL 6 REF.
NO SCALE V049-3-124 SHT. 1



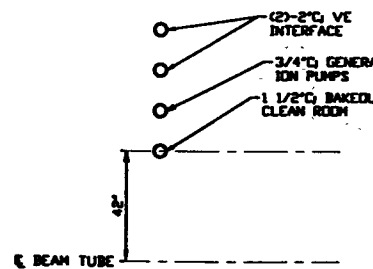
DETAIL 7 REF.
NO SCALE V049-3-124 SHT. 1



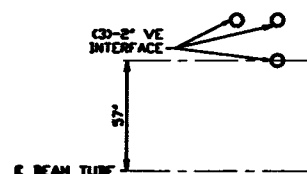
DETAIL 9 REF.
NO SCALE V049-3-124 SHT. 1



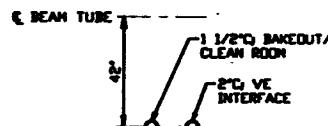
DETAIL 10 REF.
NO SCALE V049-3-124 SHT. 1



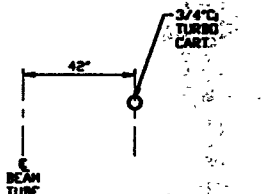
DETAIL 11 REF.
NO SCALE V049-3-124 SHT. 1



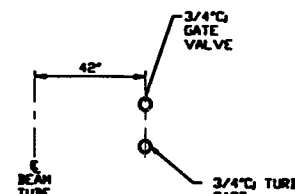
DETAIL 12 REF.
NO SCALE V049-3-124 SHT. 1



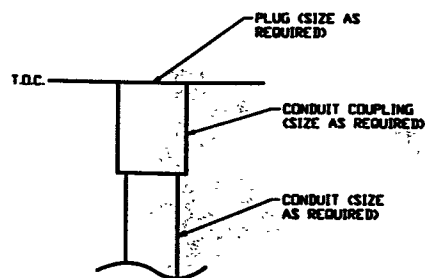
DETAIL 13 REF.
NO SCALE V049-3-124 SHT. 1



DETAIL 14 REF.
NO SCALE V049-3-124 SHT. 1



DETAIL 15 REF.
NO SCALE V049-3-124 SHT. 1



DETAIL 16 REF.
NO SCALE V049-3-124 SHT. 1

SEE SHEET 1 FOR REVISIONS

PROCESS SYSTEMS INTERNATIONAL INC. 20 WALSH DR. NEEDHAM, MASSACHUSETTS 01949 USA			
ELECTRICAL CONDUIT STUB-UP PLAN LIGO VACUUM EQUIPMENT WASHINGTON SITE CORNER STATION			
CAD FILE NO. V0492124/212452	SIZE D	DWG. NO. V049-3-124	REV. 1
SCALE NONE	SHEET 2 OF 2		

1150-DS60042-01-V