

- NOTES:**
- 2) PROVIDE PULL TAPE IN EACH CONDUIT.
 - 3) ALL UNDERGROUND INSTALLATION AND DETAILS ARE BY OTHERS.
 - 4) POWER SOURCE SHALL BE AS FOLLOWS:
 - A) BAKEOUT/CLEAN ROOM 480/277VAC
 - B) ROUGHING CART 480/277VAC
 - C) GATE VALVE 480/277VAC
 - D) GENERAL/IGN PUMPS 120VAC
 - E) BAKEOUT CONTROL 120VAC
 - F) TURBO CART 208/120VAC
 - 5) FOR EQUIPMENT POWER REQUIREMENTS, REFER TO PSI DOCUMENT #V049-1-047.

- LEGEND:**
- VACUUM EQUIPMENT INTERFACE CONDUIT
 - POWER STATION LOCATIONS
 - STUB-UP LOCATIONS

MAR 08 1996

PROPRIETARY AND CONFIDENTIAL
 THIS DOCUMENT CONTAINS PROPRIETARY INFORMATION BELONGING TO PROCESS SYSTEMS INTERNATIONAL, INC. OR ITS AFFILIATED COMPANIES AND SHALL BE USED ONLY FOR THE PURPOSE FOR WHICH IT WAS SUPPLIED. IT SHALL NOT BE COPIED, REPRODUCED OR OTHERWISE USED, NOR SHALL SUCH INFORMATION BE FURNISHED IN WHOLE OR IN PART TO OTHERS EXCEPT IN ACCORDANCE WITH THE TERMS OF ANY AGREEMENT UNDER WHICH IT WAS SUPPLIED OR WITH THE PRIOR WRITTEN CONSENT OF PROCESS SYSTEMS INTERNATIONAL, INC. AND SHALL BE RETURNED UPON REQUEST.

DWG. NO.	DESCRIPTION	DWG. NO.	DESCRIPTION

UNLESS OTHERWISE SPECIFIED
 DIMENSIONS ARE IN INCHES
 TOLERANCES:
 FRACTIONAL ±
 ANGULAR MACH ±0°-31' BEND ±2°
 TWO PLACE DECIMAL ±.01
 THREE PLACE DECIMAL ±.005
 FINISHED SURFACE INHS
 BREAK CORNERS IN DWT
 REMOVE ALL BURRS

DO NOT SCALE THIS DRAWING

USED ON:

NEXT ASS'Y:

REV	DESCRIPTION	CHKD	DRWN	DATE	DEG#
P2	REVISED PRELIMINARY			03.05.96	0082
P1	PRELIMINARY			02.29.96	0074

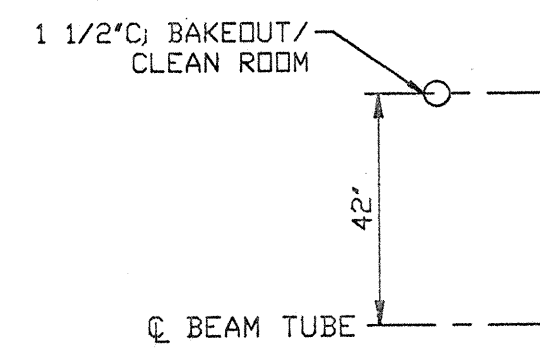
PROCESS SYSTEMS INTERNATIONAL, INC.
 20 WALKUP DR. WESTBOROUGH, MASSACHUSETTS 01581 USA

ELECTRICAL CONDUIT STUB-UP PLAN
 LIGO VACUUM EQUIPMENT
 WASHINGTON SITE
 CORNER STATION

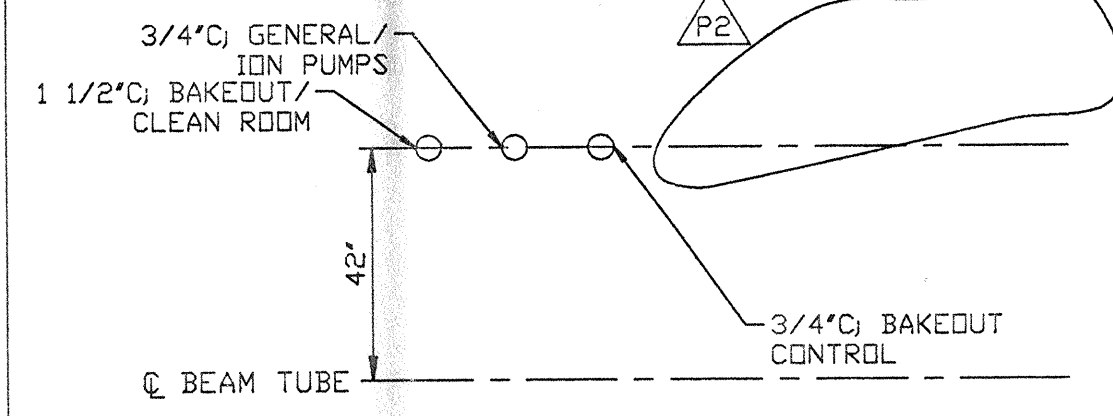
CAD FILE: V0493124\3124S1
 SIZE: D
 DWG. NO.: V049-3-124
 SHEET: 1 OF 2

SCALE: 1" = 10'-0"

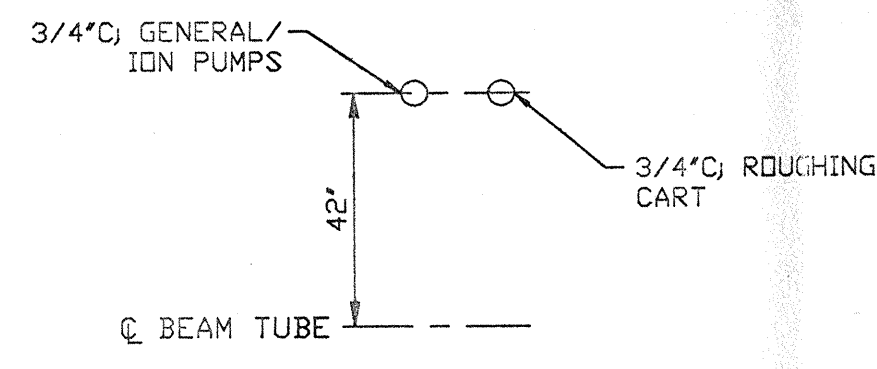
8160 D900568-P2-Y



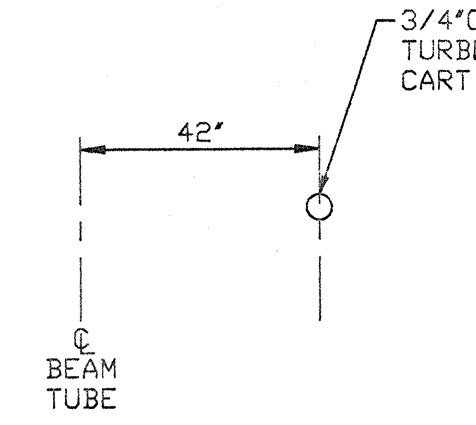
DETAIL 1
NO SCALE



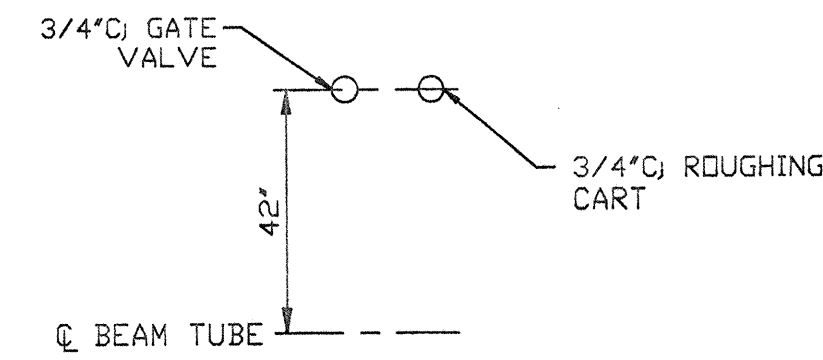
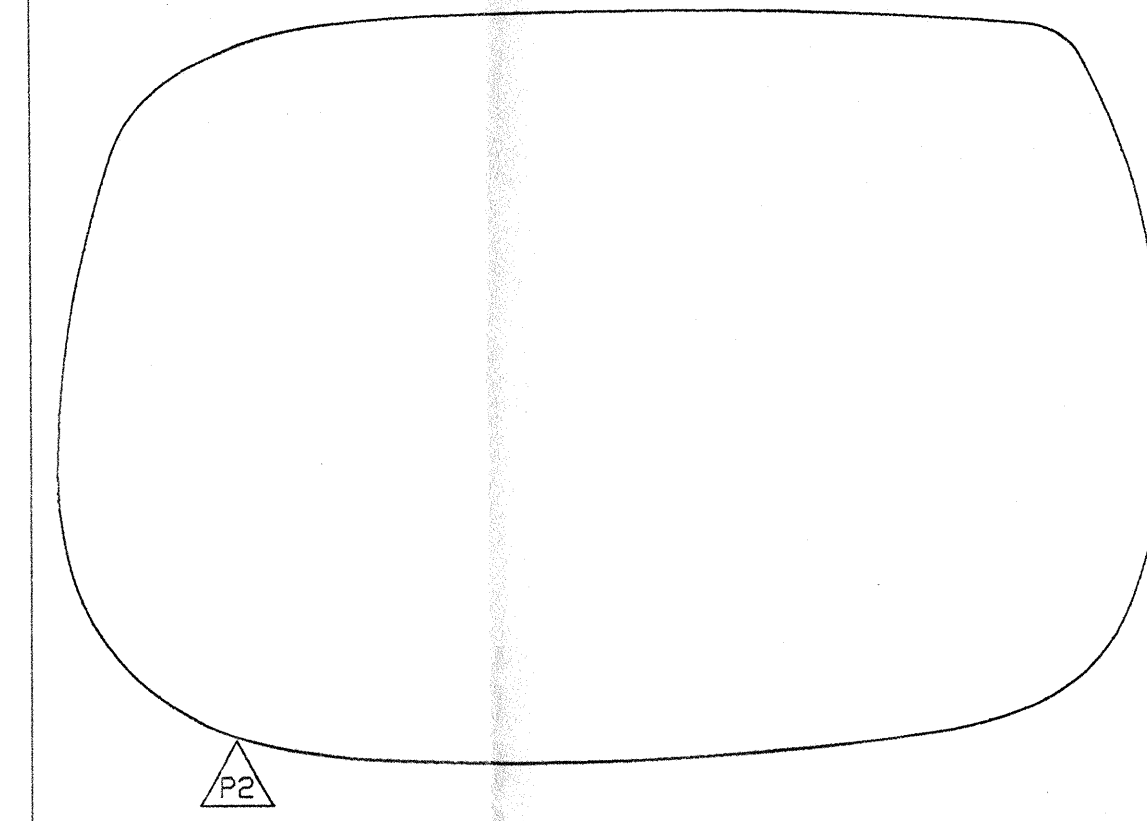
DETAIL 2
NO SCALE



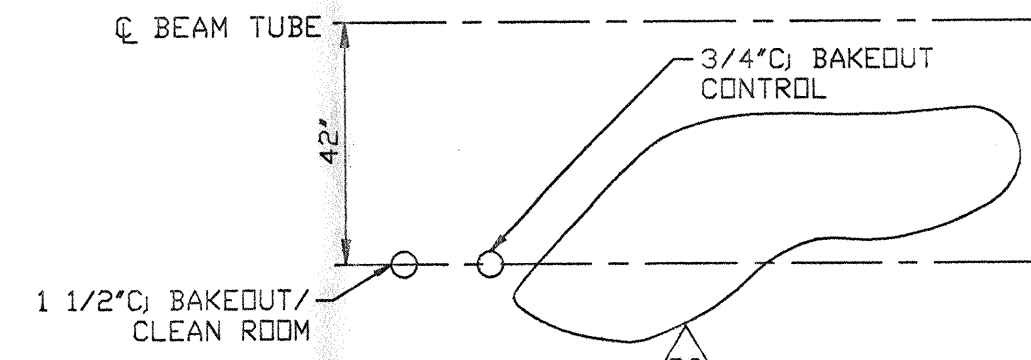
DETAIL 3
NO SCALE



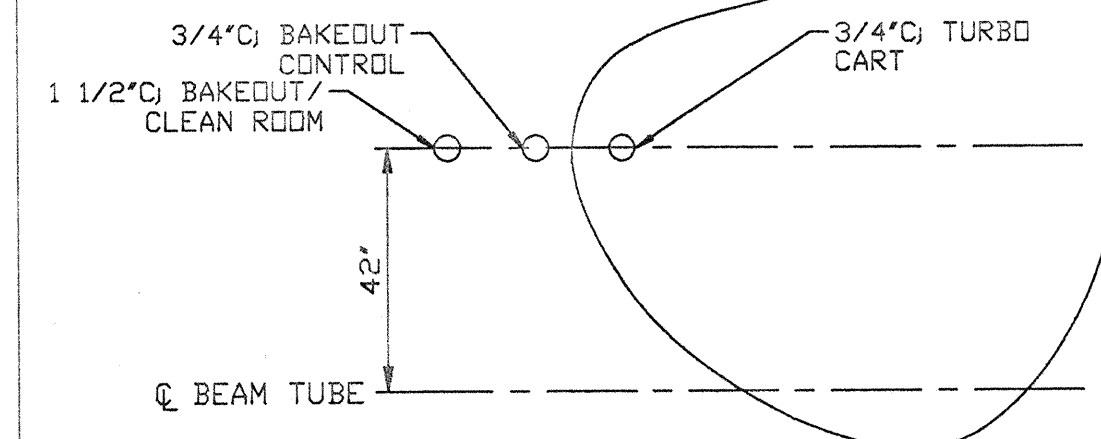
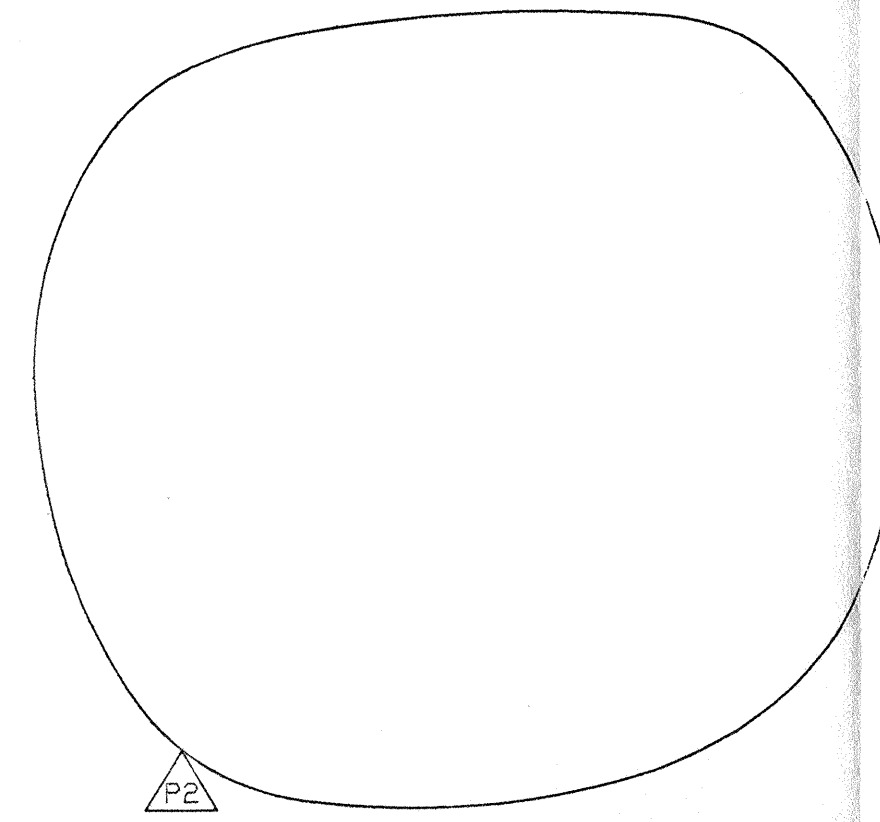
DETAIL 4
NO SCALE



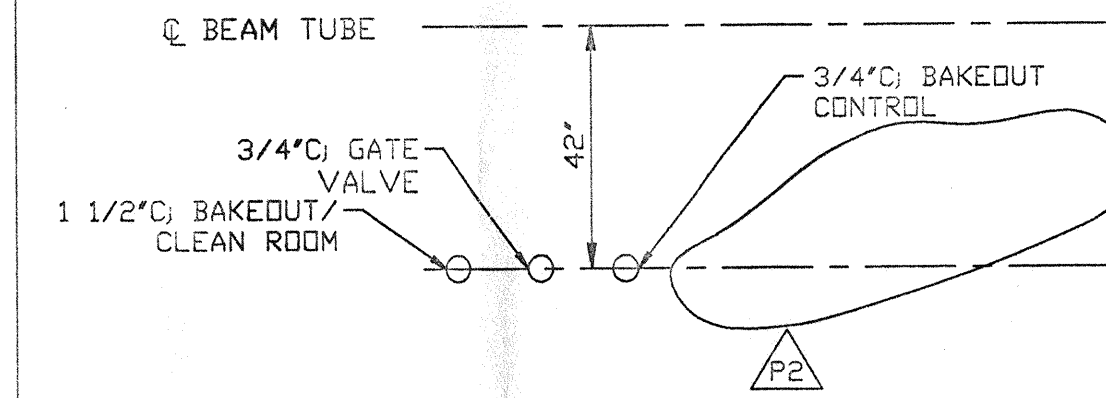
DETAIL 6
NO SCALE



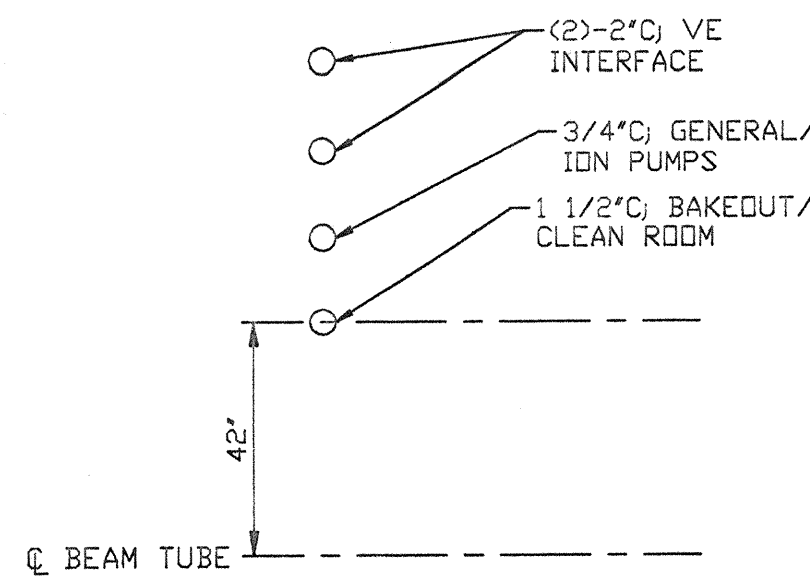
DETAIL 7
NO SCALE



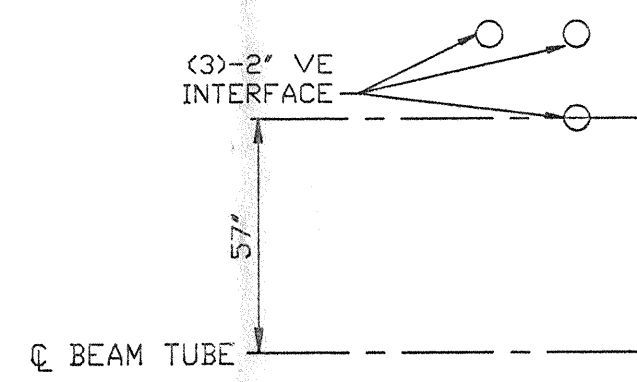
DETAIL 9
NO SCALE



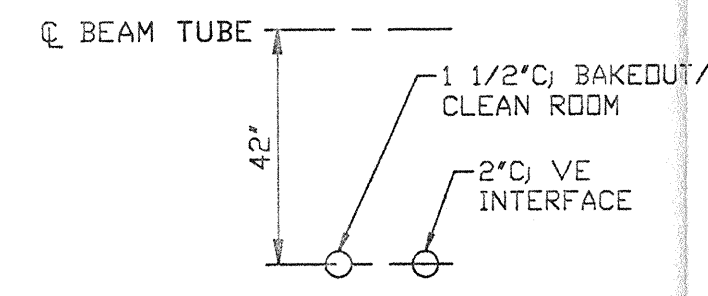
DETAIL 10
NO SCALE



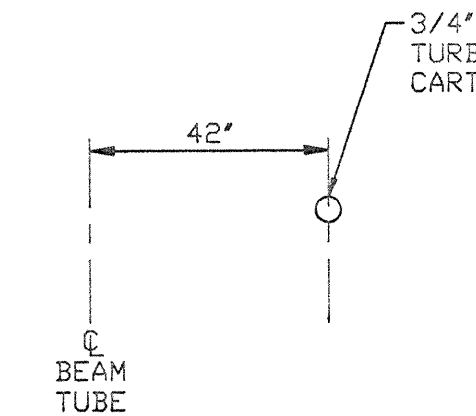
DETAIL 11
NO SCALE



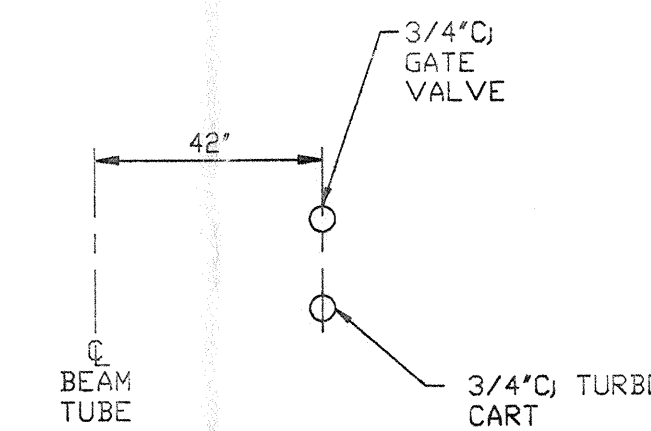
DETAIL 12
NO SCALE



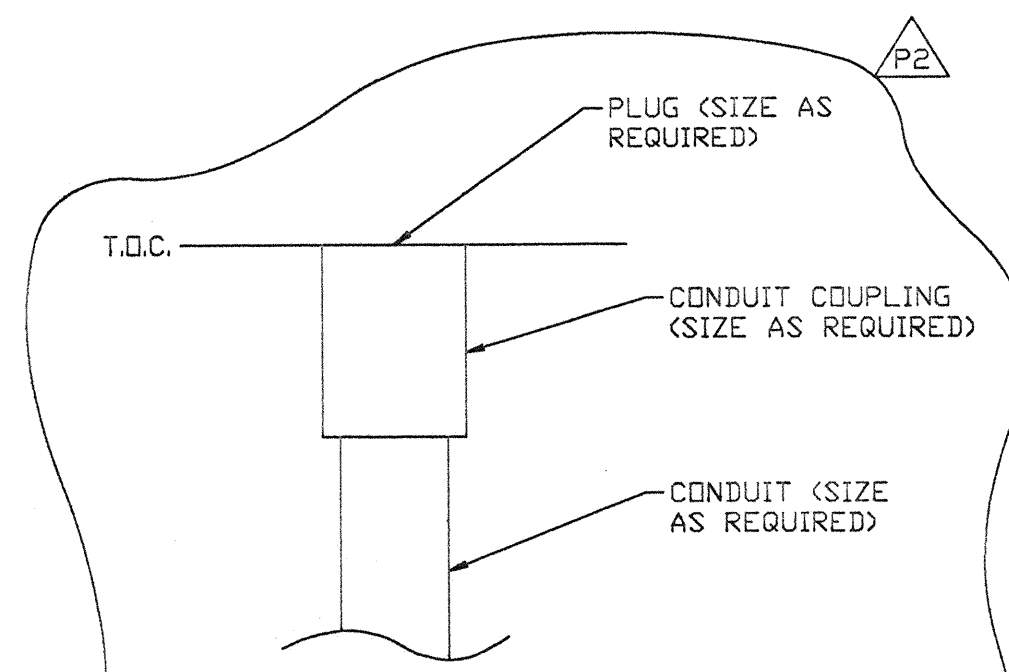
DETAIL 13
NO SCALE



DETAIL 14
NO SCALE



DETAIL 15
NO SCALE



DETAIL 16
NO SCALE
TYP. FOR ALL STUB-UPS

MAR 06 1996

SEE SHEET 1 FOR REVISIONS

PROCESS SYSTEMS INTERNATIONAL INC. 20 WALKUP DR. WESTBOROUGH, MASSACHUSETTS 01581 USA			
ELECTRICAL CONDUIT STUB-UP PLAN LIGO VACUUM EQUIPMENT WASHINGTON SITE CORNER STATION			
CAD FILE	SIZE	DWG. NO.	REV.
V0493124/3124S2	D	V049-3-124	P2
SCALE	NONE	SHEET	2 OF 2

L160-D960568-P2-V