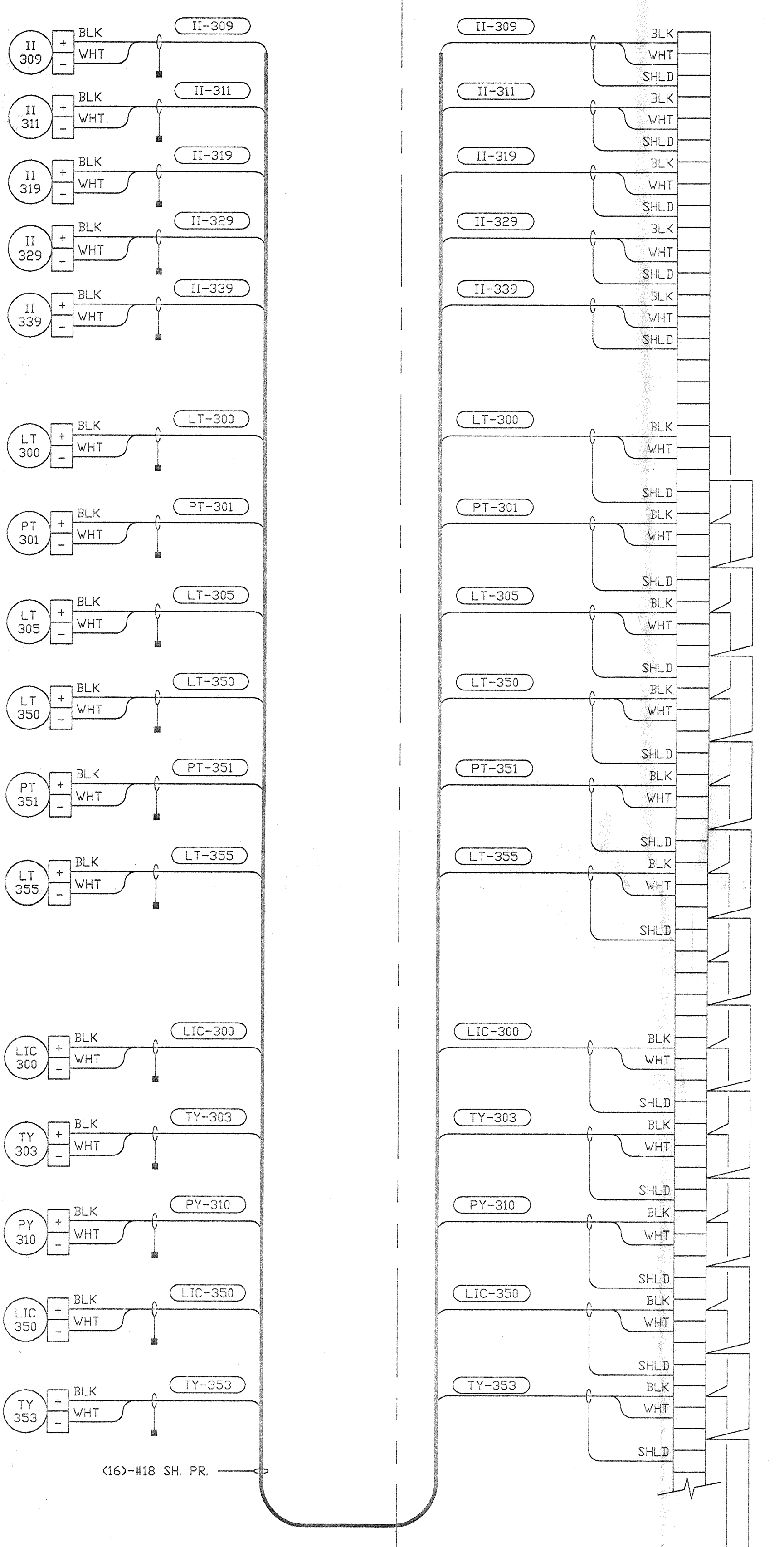
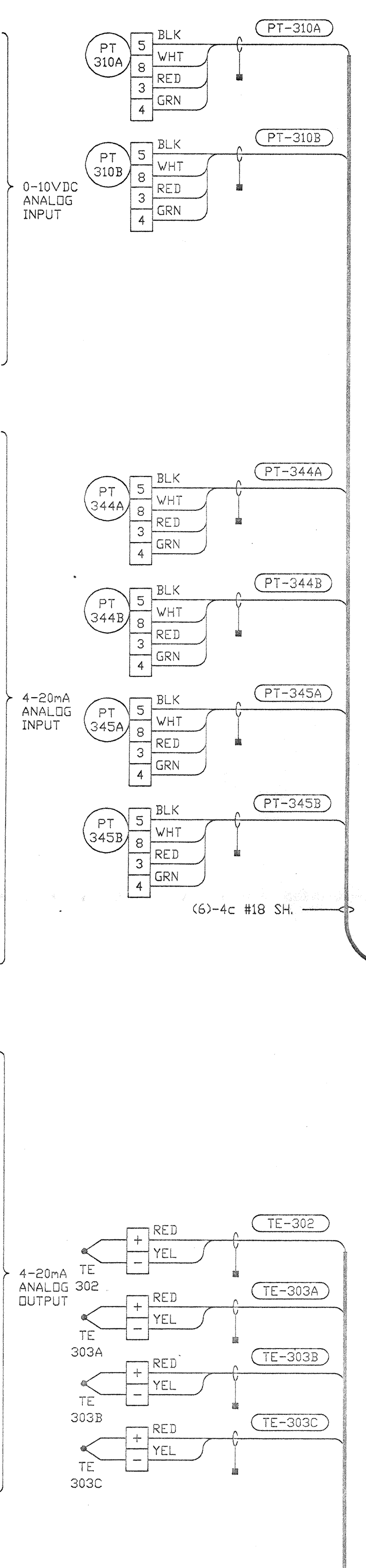


CDS-03



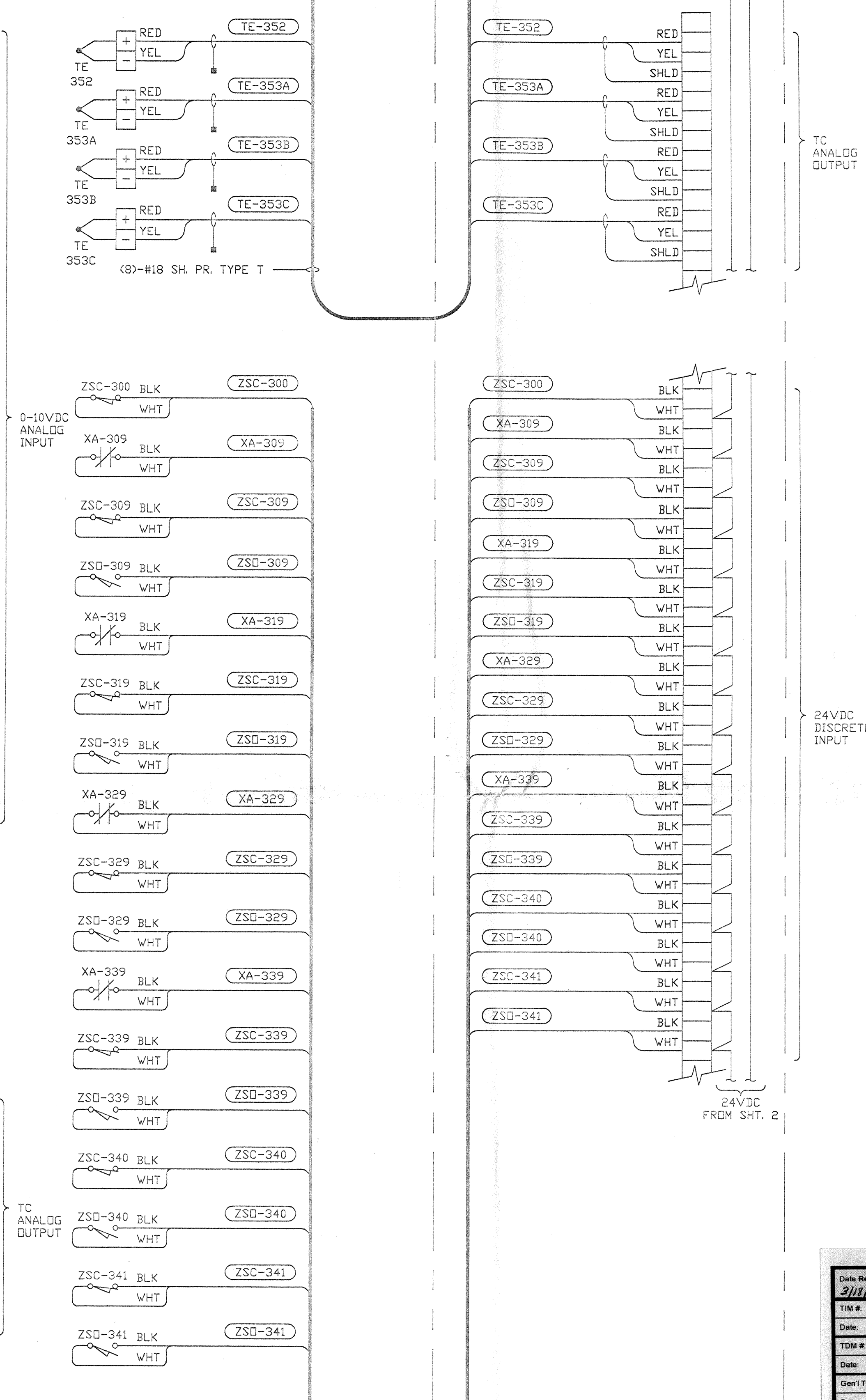
CONT'D ABOVE RIGHT

CONT'D BELOW LEFT



CONT'D ABOVE RIGHT

CONT'D BELOW LEFT



CONT'D ON SHT. 2

Date Received: 3/18/96	LIGO: D960910-P1-Y Contractor #: V049-3-308
Title #:	LIGO:
Date: / /	Approved:
TDM #:	LIGO:
Date: / /	Approved:
Gen'l Transmittal	LIGO:
Date: / /	Approved:

MAR 14 1996

PROPRIETARY AND CONFIDENTIAL
THIS DOCUMENT CONTAINS PROPRIETARY INFORMATION BELONGING TO PROCESS SYSTEMS INTERNATIONAL, INC. OR ITS AFFILIATED COMPANIES AND SHALL BE USED ONLY FOR THE PURPOSE FOR WHICH IT WAS SUPPLIED. IT SHALL NOT BE COPIED, REPRODUCED OR OTHERWISE USED, NOR SHALL SUCH INFORMATION BE FURNISHED IN WHOLE OR IN PART TO OTHERS EXCEPT IN ACCORDANCE WITH THE TERMS OF ANY AGREEMENT UNDER WHICH IT WAS SUPPLIED OR WITH THE PRIOR WRITTEN CONSENT OF PROCESS SYSTEMS INTERNATIONAL, INC. AND SHALL BE RETURNED UPON REQUEST.

DWG. NO.	DESCRIPTION	DWG. NO.	DESCRIPTION
8		7	
7		6	
6		5	
5		4	
4		3	
3		2	
2		1	

UNLESS OTHERWISE SPECIFIED DIMENSIONS ARE IN INCHES TOLERANCES: FRACTIONAL: ± .005 ANGULAR: 30°-90° BEND ± 2° TWO PLACE DECIMAL ± .01 THREE PLACE DECIMAL ± .005 FINISHED SURFACE RMS BREAK CORNERS IN REMOVE ALL BURRS		DD NOT SCALE THIS DRAWING	PI PRELIMINARY	DATE	03.06.96	0084
USED ON:	REV	DESCRIPTION	CHKD	DRWN	DATE	DED#
NEXT ASSY:		ISSUE DESCRIPTION				

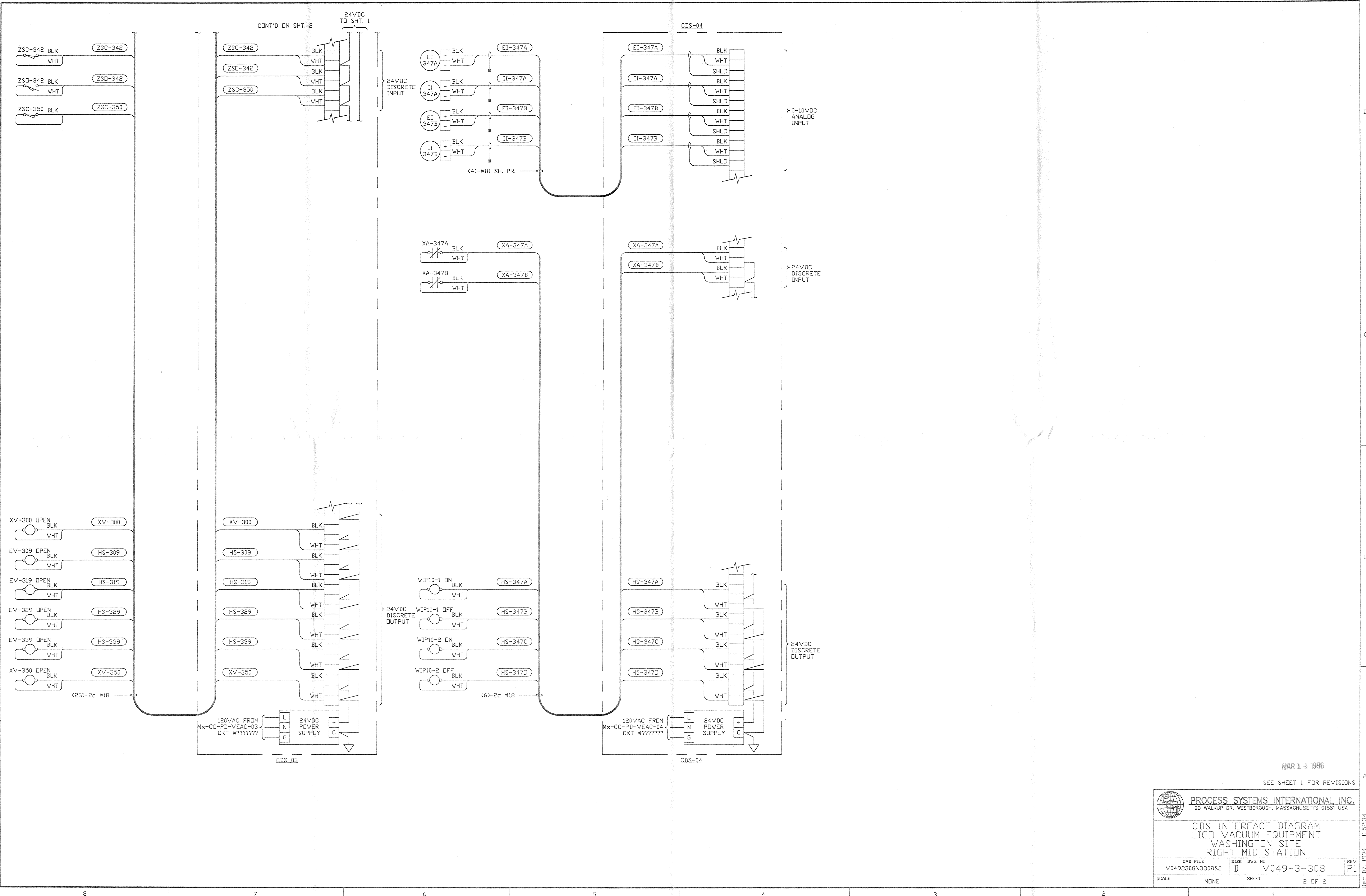
PROCESS SYSTEMS INTERNATIONAL, INC.
20 WALKUP DR. WESTBOROUGH, MASSACHUSETTS 01581 USA

CDS INTERFACE DIAGRAM
LIGO VACUUM EQUIPMENT
WASHINGTON SITE
RIGHT MID STATION

CAD FILE: V0493308\3308S1
SIZE: D
DWG. NO.: V049-3-308
SHEET: 1 OF 2

SCALE: NONE

Dec 07, 1994 - 115227



MAR 14 1996

SEE SHEET 1 FOR REVISIONS

PROCESS SYSTEMS INTERNATIONAL, INC. 20 WALKUP DR. WESTBOROUGH, MASSACHUSETTS 01581 USA			
CDS INTERFACE DIAGRAM LIGD VACUUM EQUIPMENT WASHINGTON SITE RIGHT MID STATION			
CAD FILE	SIZE	DWG. NO.	REV.
V0493308\3308S2	D	V049-3-308	P1
SCALE	NONE	SHEET	2 OF 2

DEC 07 1994 - 11:58:34