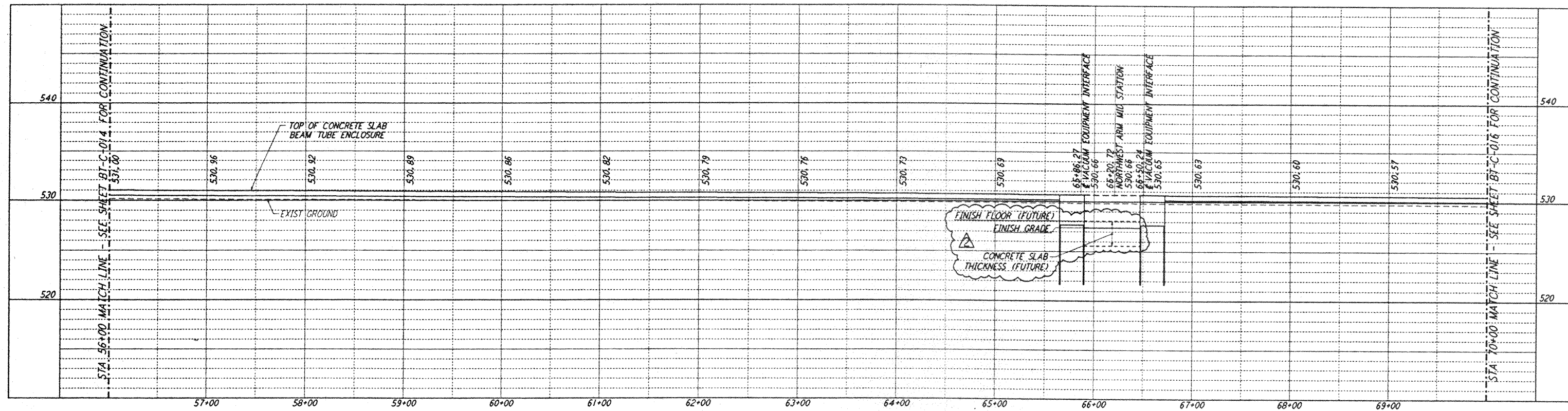
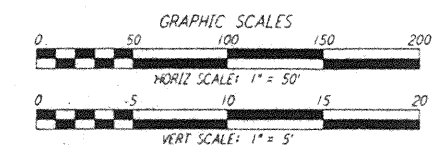
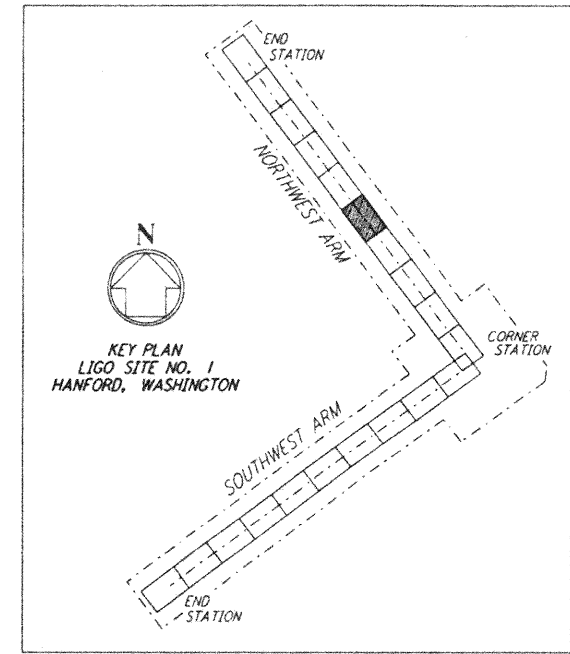
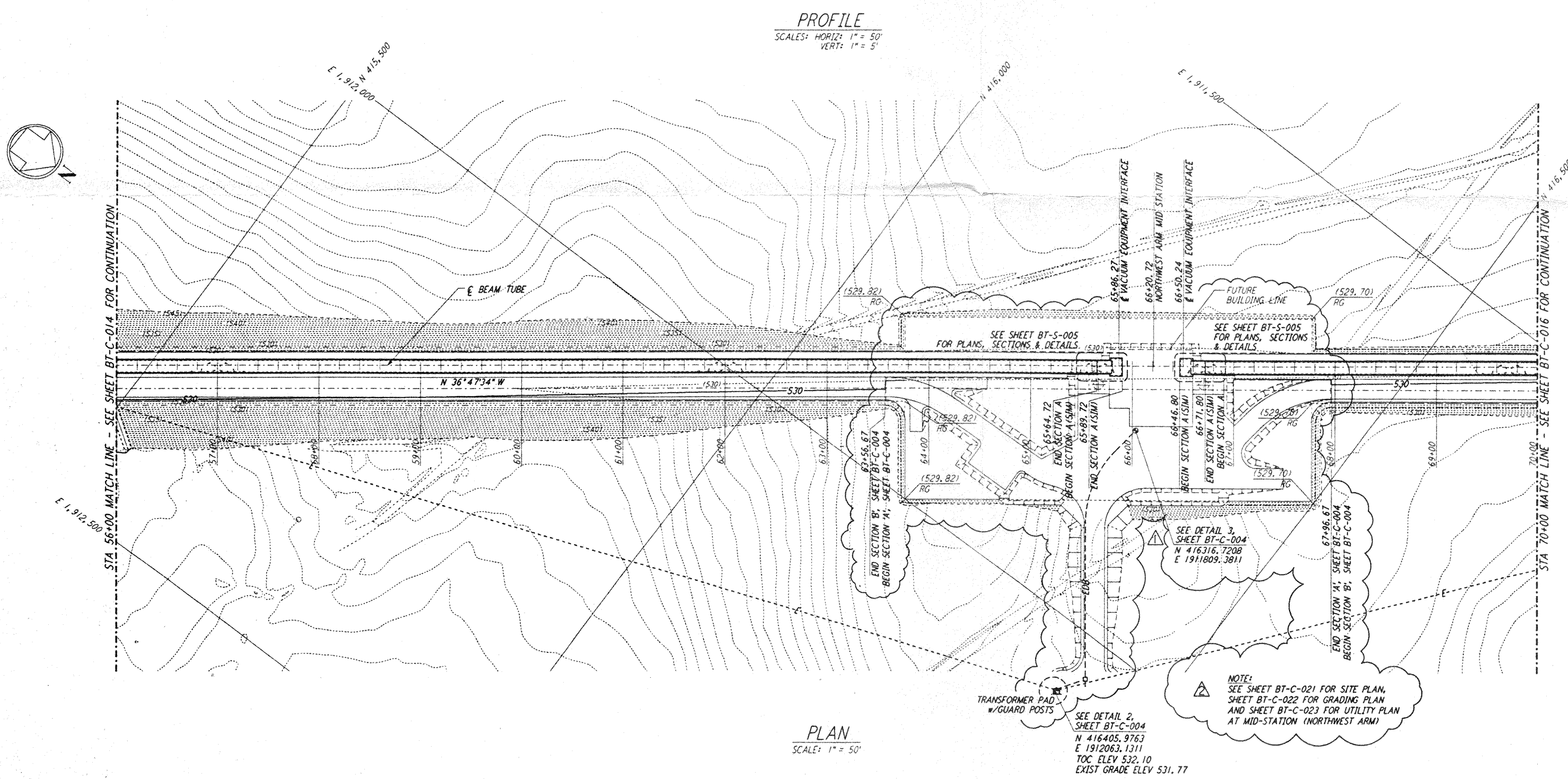


not be reproduced, copied, loaned, exhibited, or used in any other way, except by written consent from PARSONS to the borrower.

this document and the design it covers are the property of PARSONS. They are loaned only with the borrower's expressed written agreement that they will



- NOTES:**
- SEE SHEET BT-C-002 FOR GENERAL NOTES, LEGEND AND ABBREVIATIONS.
 - SEE SHEET BT-C-004 FOR TYPICAL SECTIONS AND DETAILS.



NO.	DATE	BY	CHKD	ENGR	PROJ	DESCRIPTION
2	4-19-96	WRB	TDM	JB	MDW	CHANGE ORDER NO. 4
1	2-29-96	WRB	TDM	JB	MDW	CHANGE ORDER NO. 2

NO.	DATE	BY	CHKD	ENGR	PROJ	DESCRIPTION
1	1-19-96	WRB	MP	JB	MDW	ISSUED FOR CONSTRUCTION
2	1-19-96	WRB	MP	JB	MDW	CHECKED
3	1-19-96	WRB	MP	JB	MDW	ENGINEER
4	1-19-96	WRB	MP	JB	MDW	PROJECT

PARSONS
100 WEST WALNUT STREET
PASADENA, CALIFORNIA

LIGO
CALIFORNIA INSTITUTE OF TECHNOLOGY
MASSACHUSETTS INSTITUTE OF TECHNOLOGY

LASER INTERFEROMETER
GRAVITATIONAL-WAVE OBSERVATORY
BTE SITWORK & FABRICATION - HANFORD, WA

CIVIL
NORTHWEST ARM
PLAN AND PROFILE
STA 56+00 TO STA 70+00

AS NOTED PPI50969 8094

SHEET NUMBER **BT-C-015**

5

4

3

2

LIGOBTF3.BOR