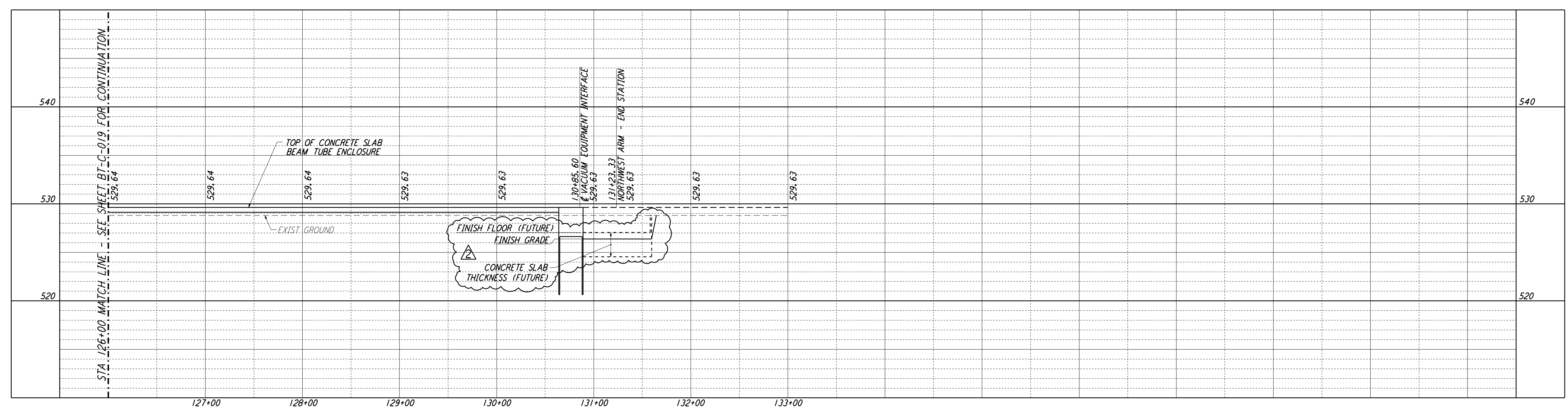
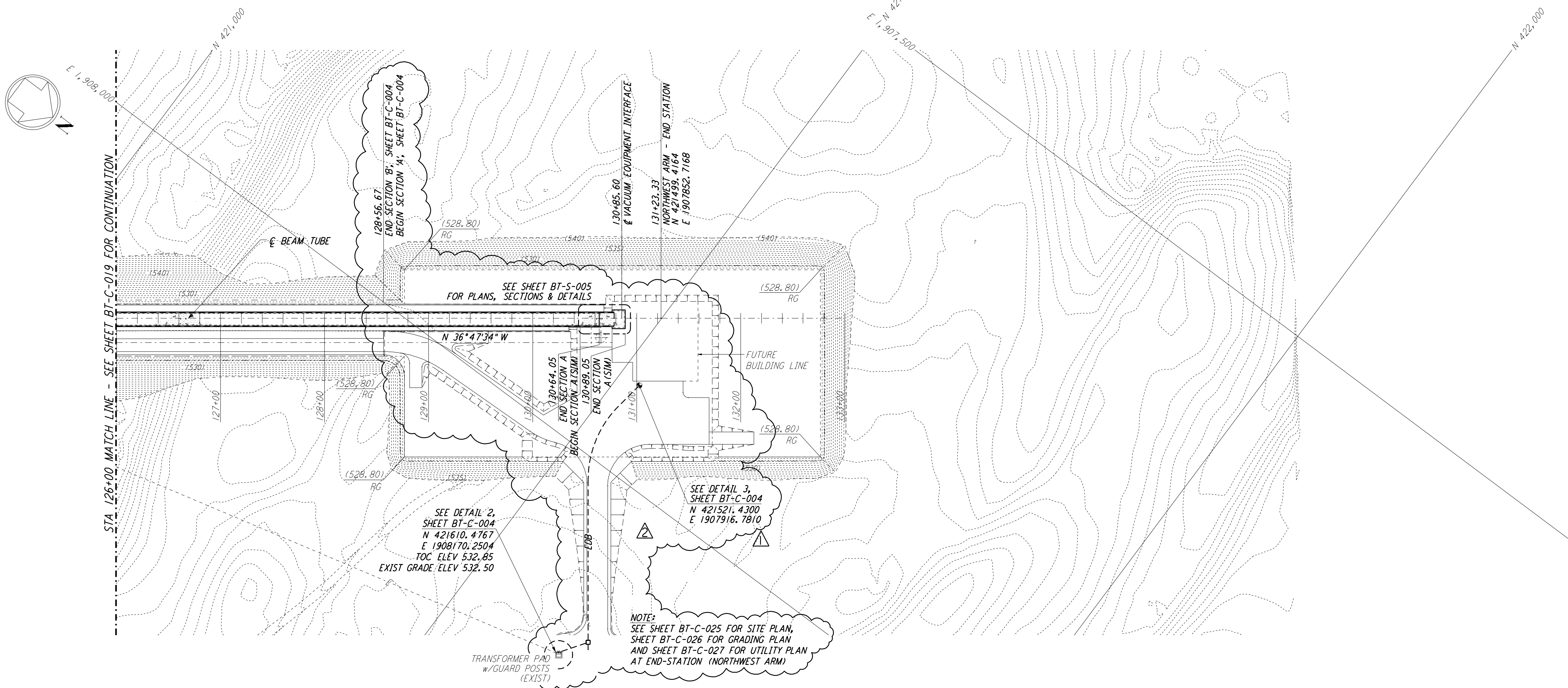


This document and the design it covers are the property of **PARSONS**. They are loaned only with the borrower's expressed written agreement that they will not be reproduced, copied, loaned, exhibited, or used in any other way, except by written consent from **PARSONS** to the borrower.

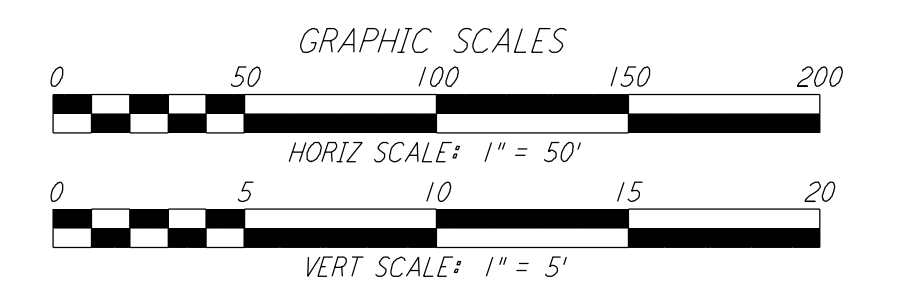
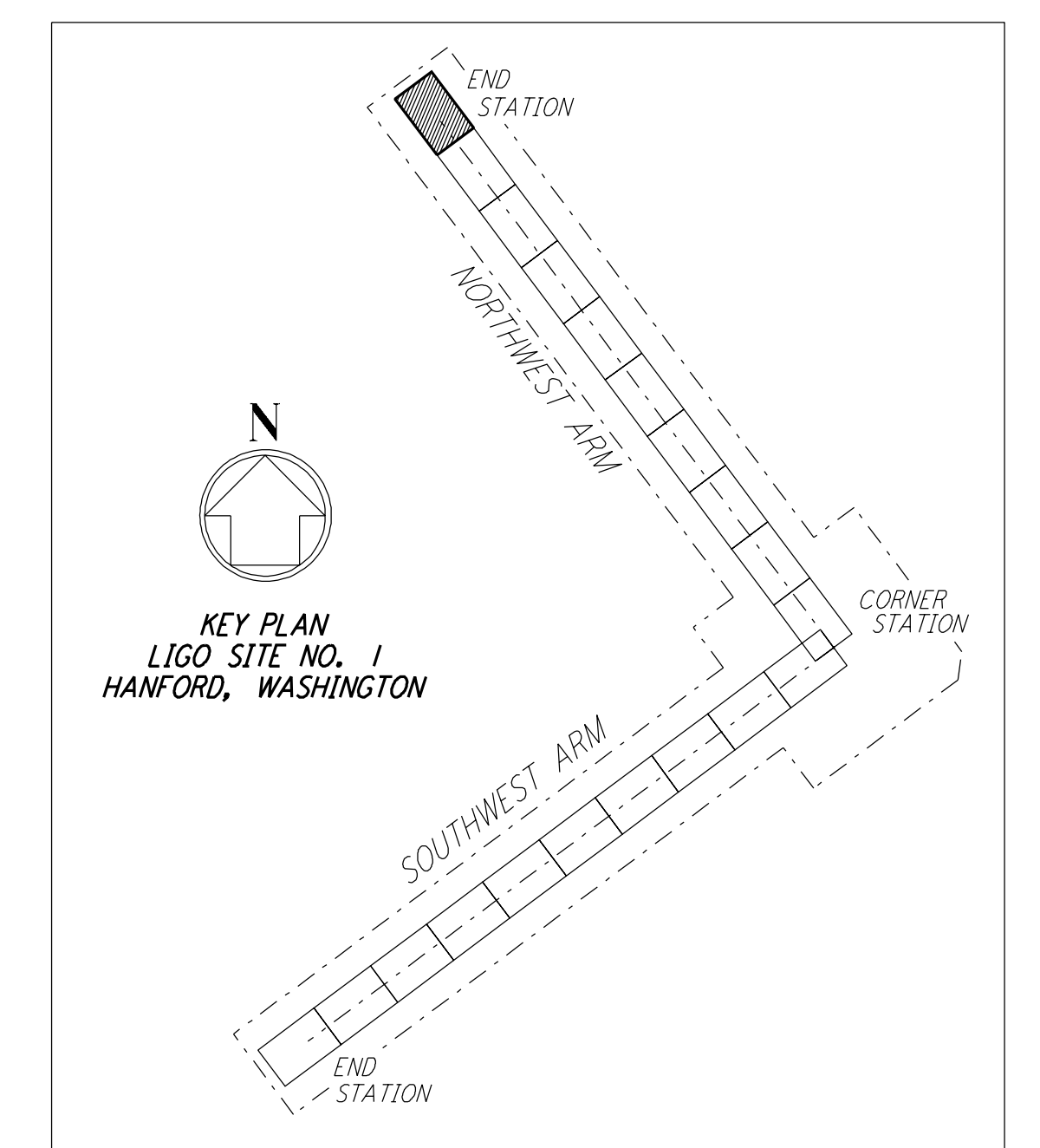


**PROFILE**  
 SCALES: HORIZ: 1" = 50'  
 VERT: 1" = 5'



**PLAN**  
 SCALE: 1" = 50'

- NOTES:**
- SEE SHEET BT-C-002 FOR GENERAL NOTES, LEGEND AND ABBREVIATIONS.
  - SEE SHEET BT-C-004 FOR TYPICAL SECTIONS AND DETAILS.



LIGO-D960715-02-0

NO.	DATE	BY	CHKD	ENGR	PROJ	DESCRIPTION
2	4-19-96	WRB				CHANGE ORDER NO. 4
1	2-29-96	WRB				CHANGE ORDER NO. 2

NO.	DATE	BY	CHKD	ENGR	PROJ	DESCRIPTION
2	4-19-96	WRB				CHANGE ORDER NO. 4
1	2-29-96	WRB				CHANGE ORDER NO. 2

ISSUED FOR CONSTRUCTION			
DRAWN	WRB	1-19-96	
CHECKED	MP	1-19-96	
ENGINEER	JB	1-19-96	
PROJ	MDW	1-19-96	

**PARSONS**  
 100 WEST WALNUT STREET  
 PASADENA, CALIFORNIA

**LIGO**  
 CALIFORNIA INSTITUTE OF TECHNOLOGY  
 MASSACHUSETTS INSTITUTE OF TECHNOLOGY

LASER INTERFEROMETER  
 GRAVITATIONAL-WAVE OBSERVATORY  
 BTE SITework & FABRICATION - HANFORD, WA

CIVIL  
 NORTHWEST ARM  
 PLAN AND PROFILE  
 STA 126+00 TO STA 133+00

AS NOTED PP150969 8094  
**BT-C-020**