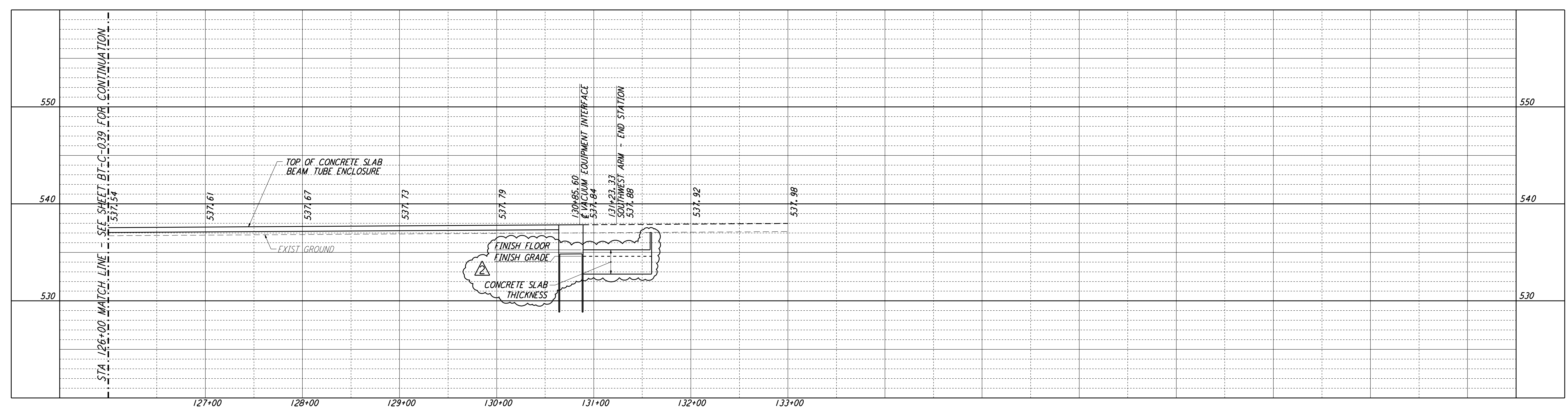
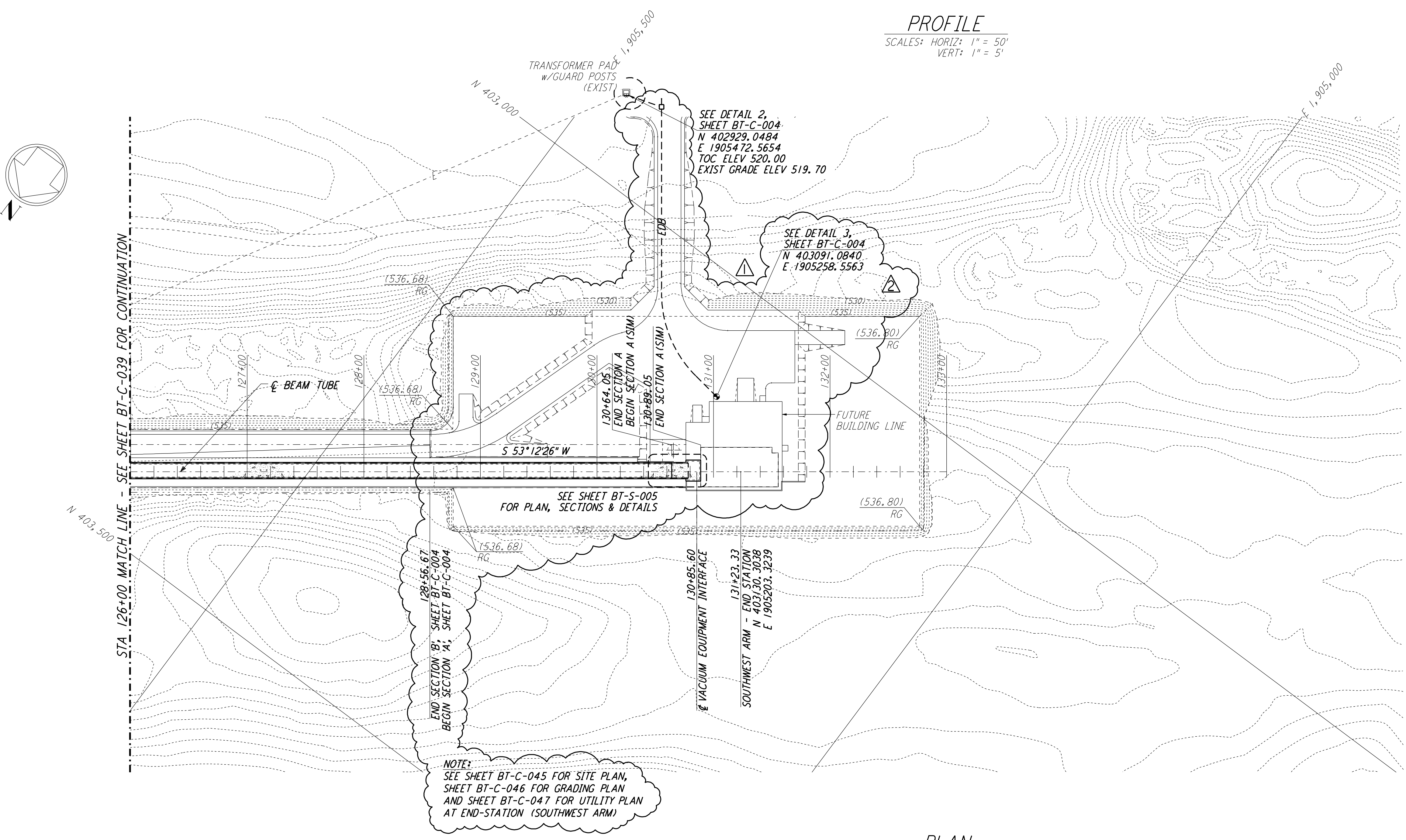


This document and the design it covers are the property of PARSONS. They are loaned only with the borrower's expressed written agreement that they will not be reproduced, copied, loaned, exhibited, or used in any other way, except by written consent from PARSONS to the borrower.

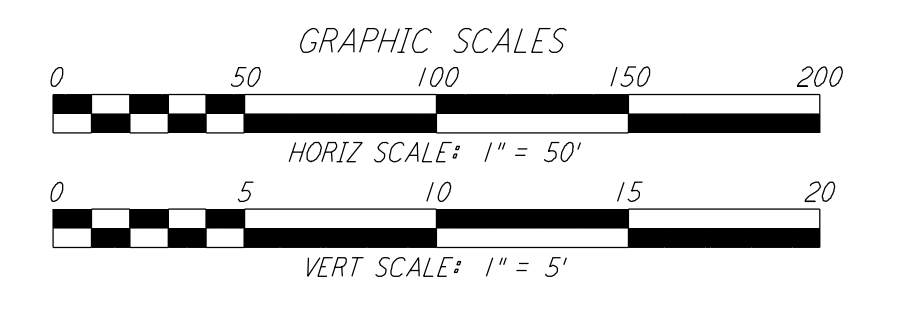
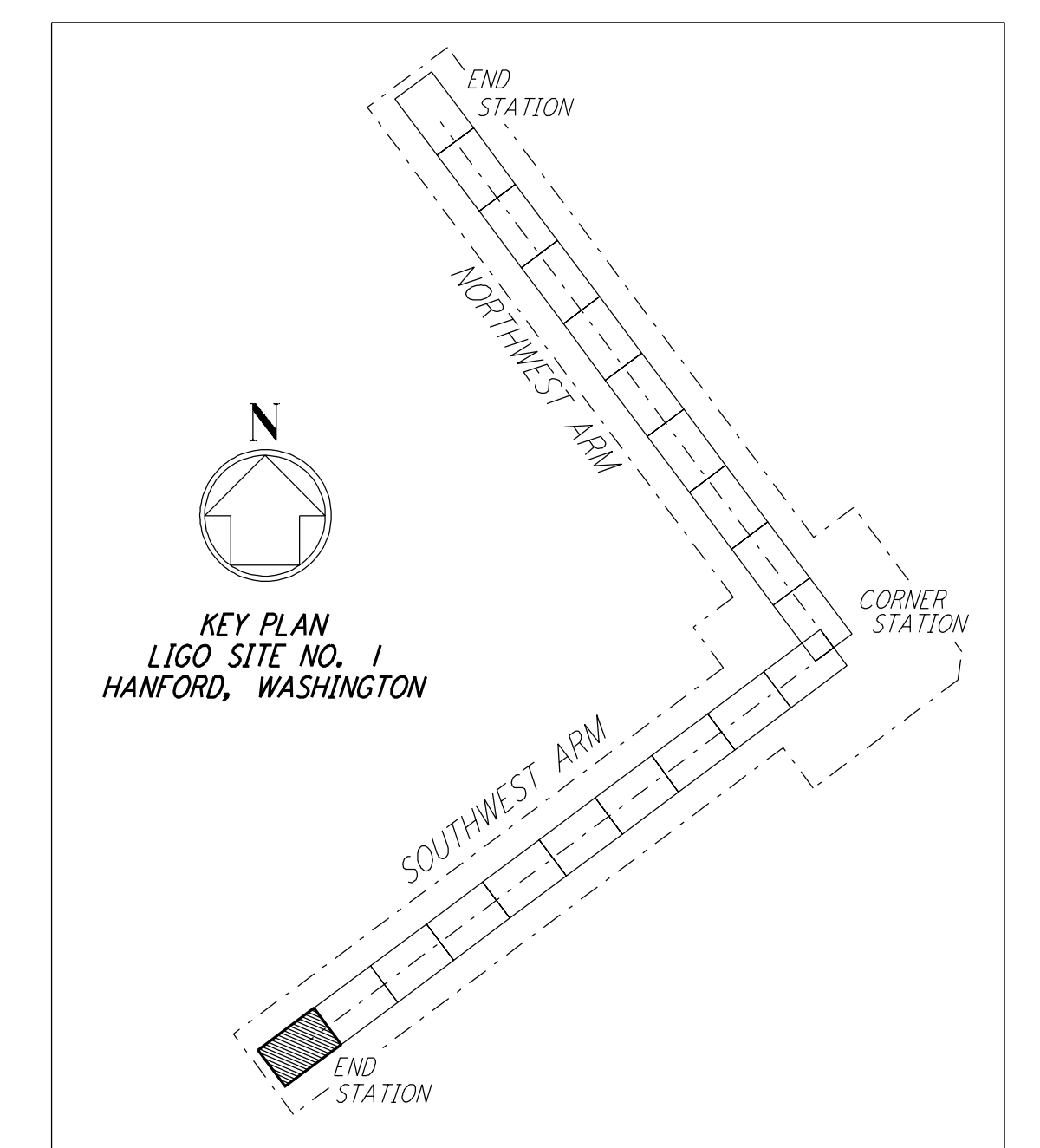


- NOTES:**
- SEE SHEET BT-C-002 FOR GENERAL NOTES, LEGEND AND ABBREVIATIONS.
 - SEE SHEET BT-C-004 FOR TYPICAL SECTIONS AND DETAILS.



PROFILE
 SCALES: HORIZ: 1" = 50'
 VERT: 1" = 5'

PLAN
 SCALE: 1" = 50'



LIGO-D960726-02-O

NO.	DATE	CHKD	ENGR	PROJ	DESCRIPTION
2	4-19-96	WRB			CHANGE ORDER NO. 4
1	2-29-96	WRB	TDM	JB	CHANGE ORDER NO. 2

ISSUED FOR CONSTRUCTION		
DRAWN	WRB	1-19-96
CHECKED	MP	1-19-96
ENGINEER	JB	1-19-96
PROJ	MDW	1-19-96

PARSONS
 100 WEST WALNUT STREET
 PASADENA, CALIFORNIA

LIGO
 CALIFORNIA INSTITUTE OF TECHNOLOGY
 MASSACHUSETTS INSTITUTE OF TECHNOLOGY

LASER INTERFEROMETER
 GRAVITATIONAL-WAVE OBSERVATORY
 BTE SITEWORK & FABRICATION - HANFORD, WA

TITLE: CIVIL SOUTHWEST ARM PLAN AND PROFILE STA 126+00 TO STA 133+00

AS NOTED PP150969 8094

SHEET NUMBER: **BT-C-040**