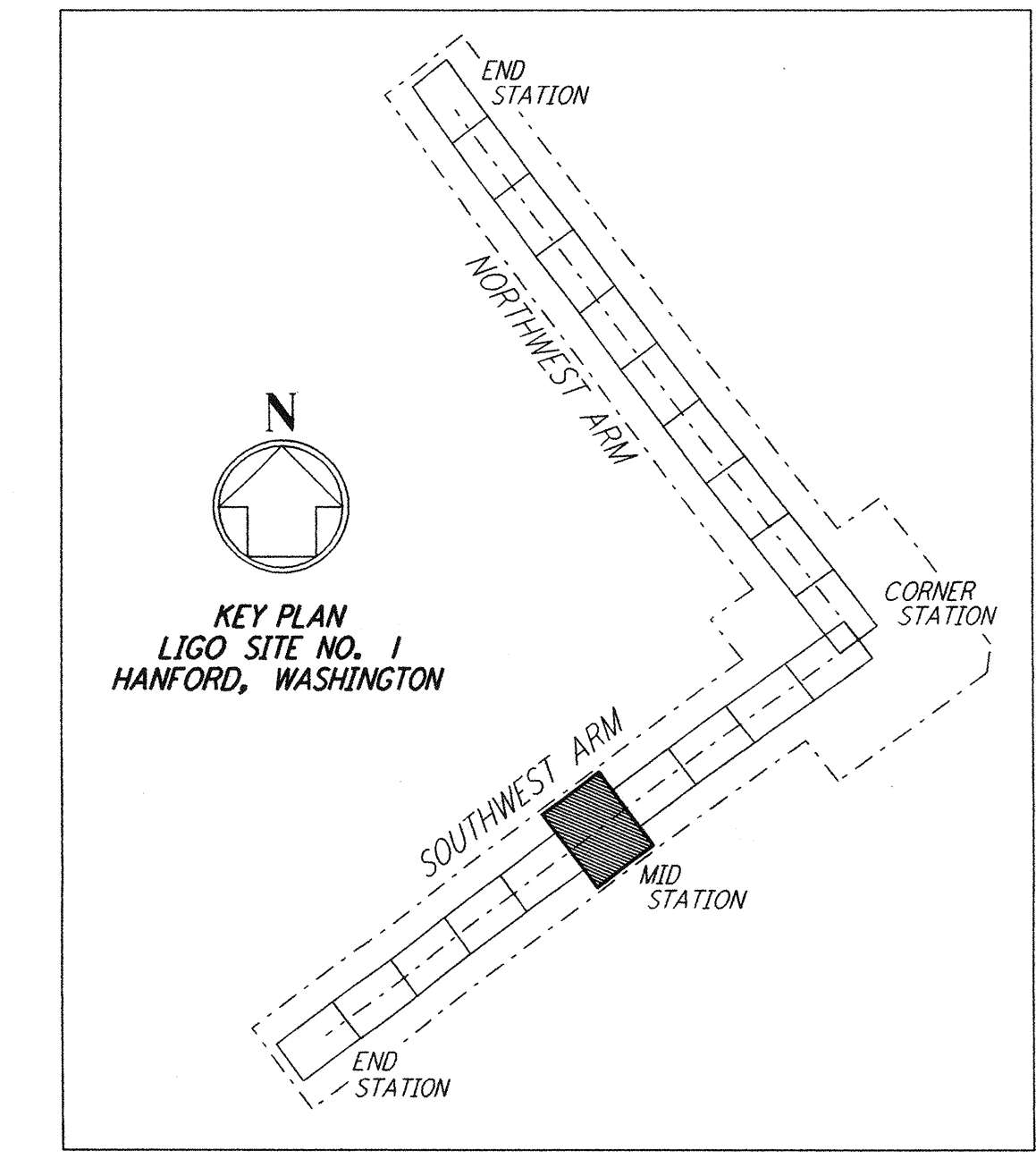
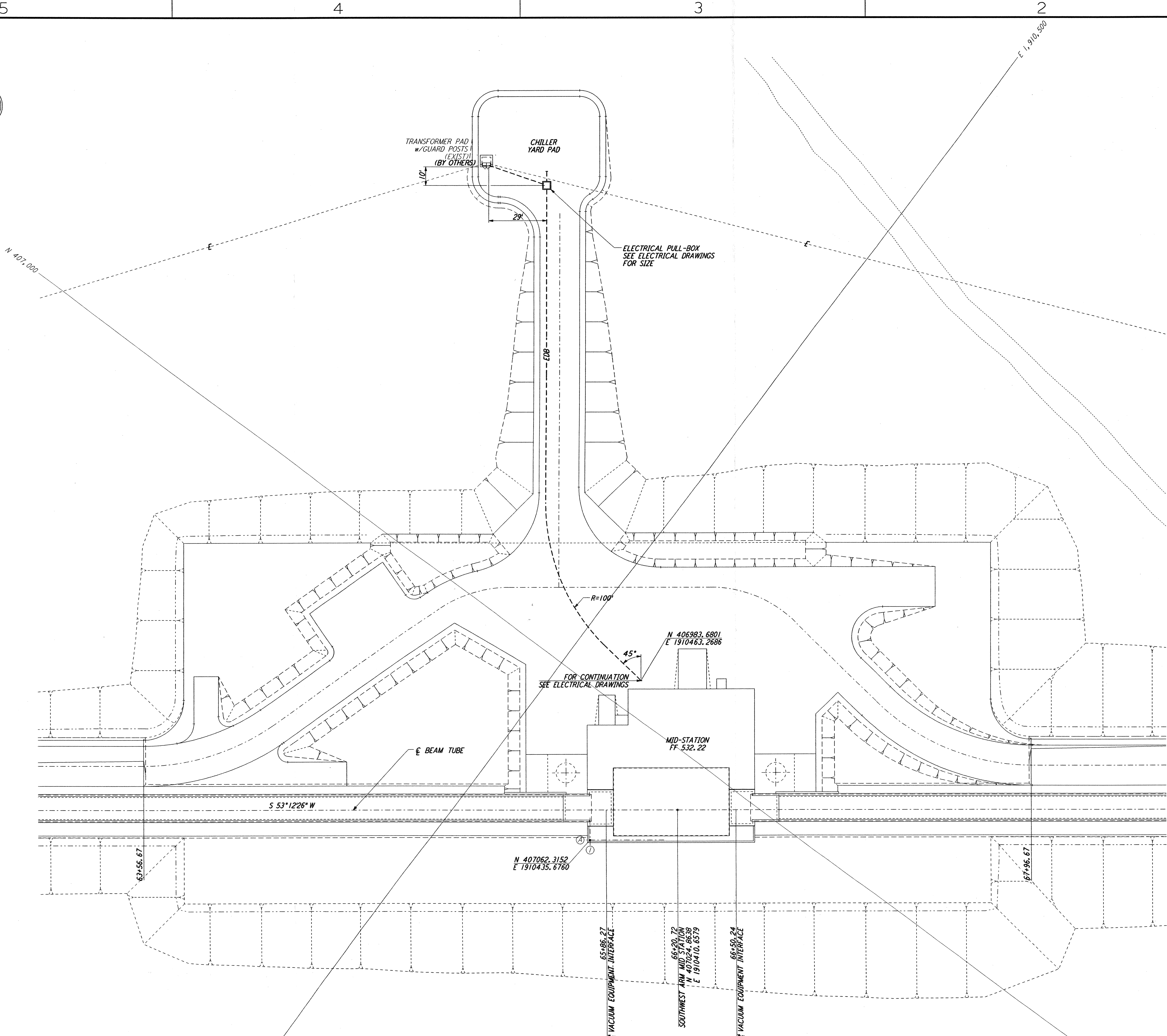
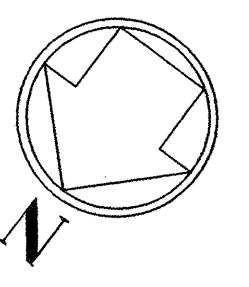
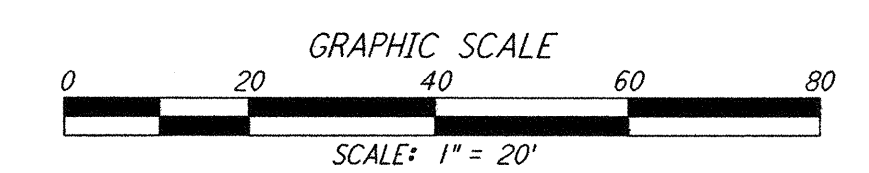


**NOTES:**  
 1. SEE SHEET WA-C-002 FOR GENERAL NOTES, LEGEND AND ABBREVIATIONS.



**LIGO-D960729-00-0**



This document and the design it covers are the property of PARSONS. They are loaned only with the borrower's expressed written agreement that they will not be reproduced, copied, loaned, exhibited, or used in any other way, except by written consent from PARSONS to the borrower.

REFERENCES		REVISIONS		DRAWN		CHECKED		ENGINEER		PROJ	
DRAWING NO.	DESCRIPTION	NO.	DATE	BY	CHKD	ENGR	PROJ				
		O	1-22-99	MEI	--	--	MDW				ISSUED FOR AS BUILT
		A	4-19-96	WRB	TDM		MDW				CHANGE ORDER NO. 4

**AS-BUILT DRAWINGS**

**PARSONS**  
 100 WEST WALNUT STREET  
 PASADENA, CALIFORNIA

**LIGO**  
 CALIFORNIA INSTITUTE OF TECHNOLOGY  
 MASSACHUSETTS INSTITUTE OF TECHNOLOGY

LASER INTERFEROMETER  
 GRAVITATIONAL-WAVE OBSERVATORY  
 BTE SITework & FABRICATION - HANFORD, WA

TITLE	SCALE	CONTRACT NUMBER	PROJECT NUMBER
CIVIL SOUTHWEST ARM MID-STATION UTILITY PLAN	1" = 20'	PP150969	8094
SHEET NUMBER		REVISIONS	
<b>BT-C-043</b>			