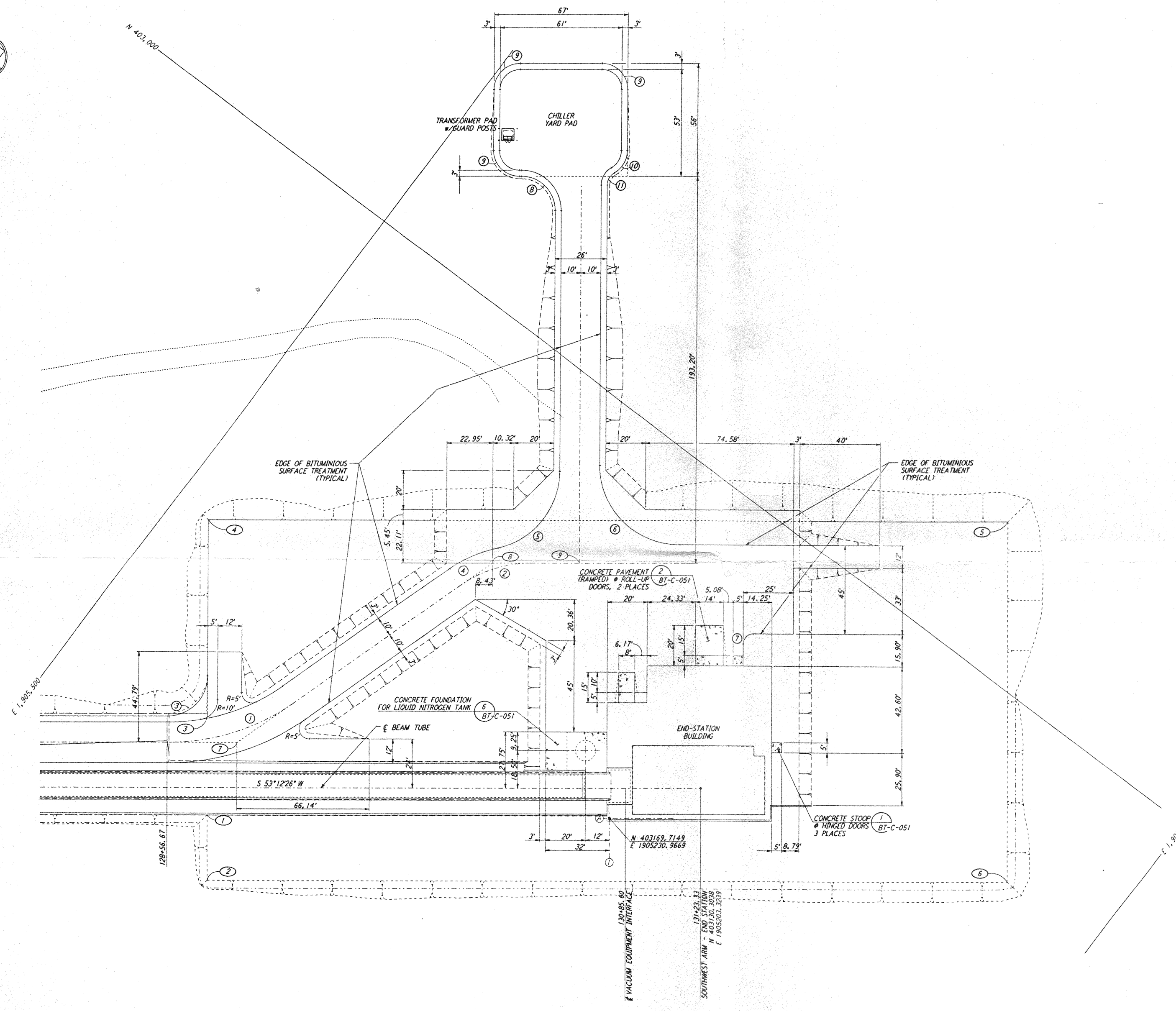
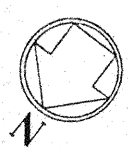


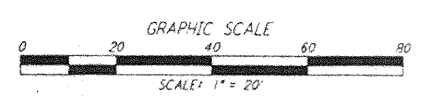
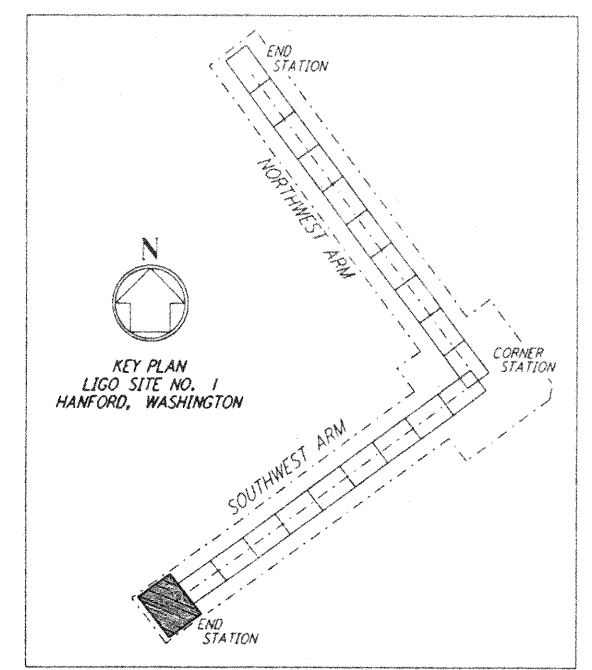
This document and the design it covers are the property of PARSONS. They are loaned only with the borrower's expressed written agreement that they will not be reproduced, copied, loaned, exhibited, or used in any other way, except by written consent from PARSONS to the borrower.



NOTES:
1. SEE SHEET BT-C-002 FOR GENERAL NOTES, LEGEND AND ABBREVIATIONS.

CURVE DATA					
NO.	Δ	RADIUS	LENGTH	TANGENT	REMARK
1	35°00'00"	110'	67.19'	34.68'	⊥ ROAD
2	35°00'00"	60'	36.65'	18.92'	⊥ ROAD
3	90°00'00"	20'	31.42'	20.00'	EDGE OF PAD (EXIST)
4	21°32'41"	70'	26.32'	13.32'	
5	76°32'48"	40'	53.44'	31.56'	
6	90°00'00"	40'	62.83'	40.00'	
7	90°00'00"	5'	7.85'	5.00'	
8	90°00'00"	17'	26.70'	17.00'	
9	90°00'00"	13'	20.42'	13.00'	
10	60°00'00"	13'	13.61'	7.51'	
11	60°00'00"	7'	7.33'	4.04'	

COORDINATES			
NO.	NORTH	EAST	REMARK
1	403288.9810	1905392.6680	PI EDGE OF PAD (EXIST)
2	403315.4070	1905372.9040	PI EDGE OF PAD (EXIST)
3	403248.9398	1905422.6147	PI EDGE OF PAD (EXIST)
4	403171.2620	1905480.7100	PI EDGE OF PAD (EXIST)
5	402931.6922	1905160.3876	PI EDGE OF PAD (EXIST)
6	403075.8373	1905052.5815	PI EDGE OF PAD (EXIST)
7	403251.6246	1905402.2720	PI ⊥ ROAD
8	403103.8631	1905353.6693	PI ⊥ ROAD
9	403077.9173	1905318.9776	⊥ ROAD INTERSECTION



NO.	DATE	BY	CHKD	ENGR	PROJ	DESCRIPTION
A	4-19-96	WRB				CHANGE ORDER NO. 4

DRAWN	WRB
CHECKED	
ENGINEER	
PROJ	

PARSONS
100 WEST WALNUT STREET
PASADENA, CALIFORNIA

LIGO
CALIFORNIA INSTITUTE OF TECHNOLOGY
MASSACHUSETTS INSTITUTE OF TECHNOLOGY

LASER INTERFEROMETER
GRAVITATIONAL-WAVE OBSERVATORY
BTE SITWORK & FABRICATION - HANFORD, WA

CIVIL
SOUTHWEST ARM
END-STATION
PLOT PLAN

SCALE: 1" = 20'
CONTRACT NUMBER: PPI 50969
PROJECT NUMBER: 8094
SHEET NUMBER: BT-C-045
LIGO-D960730-A-1