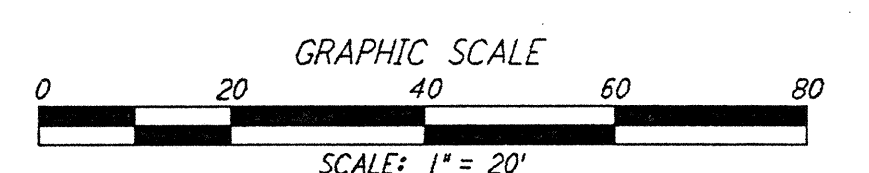
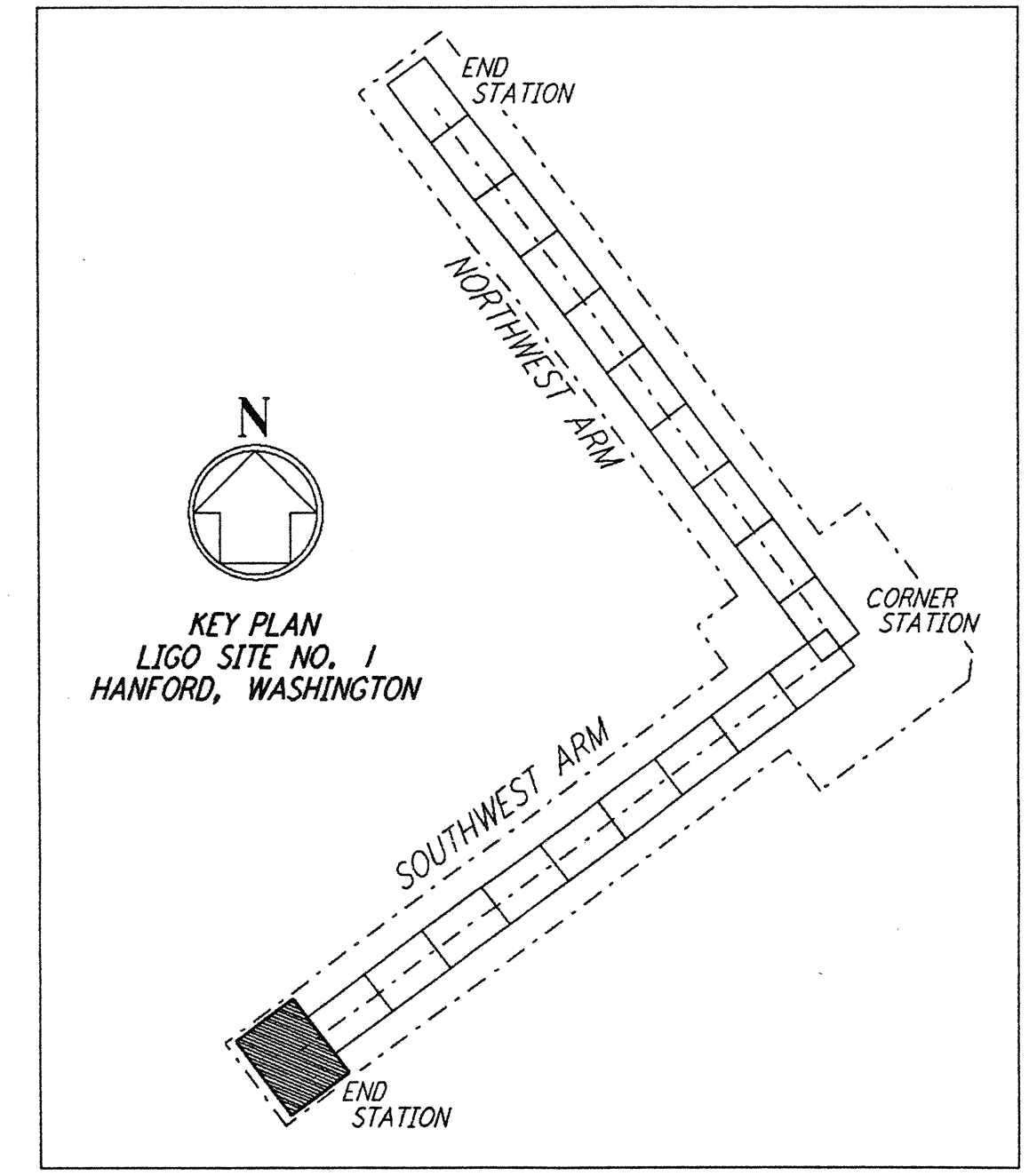
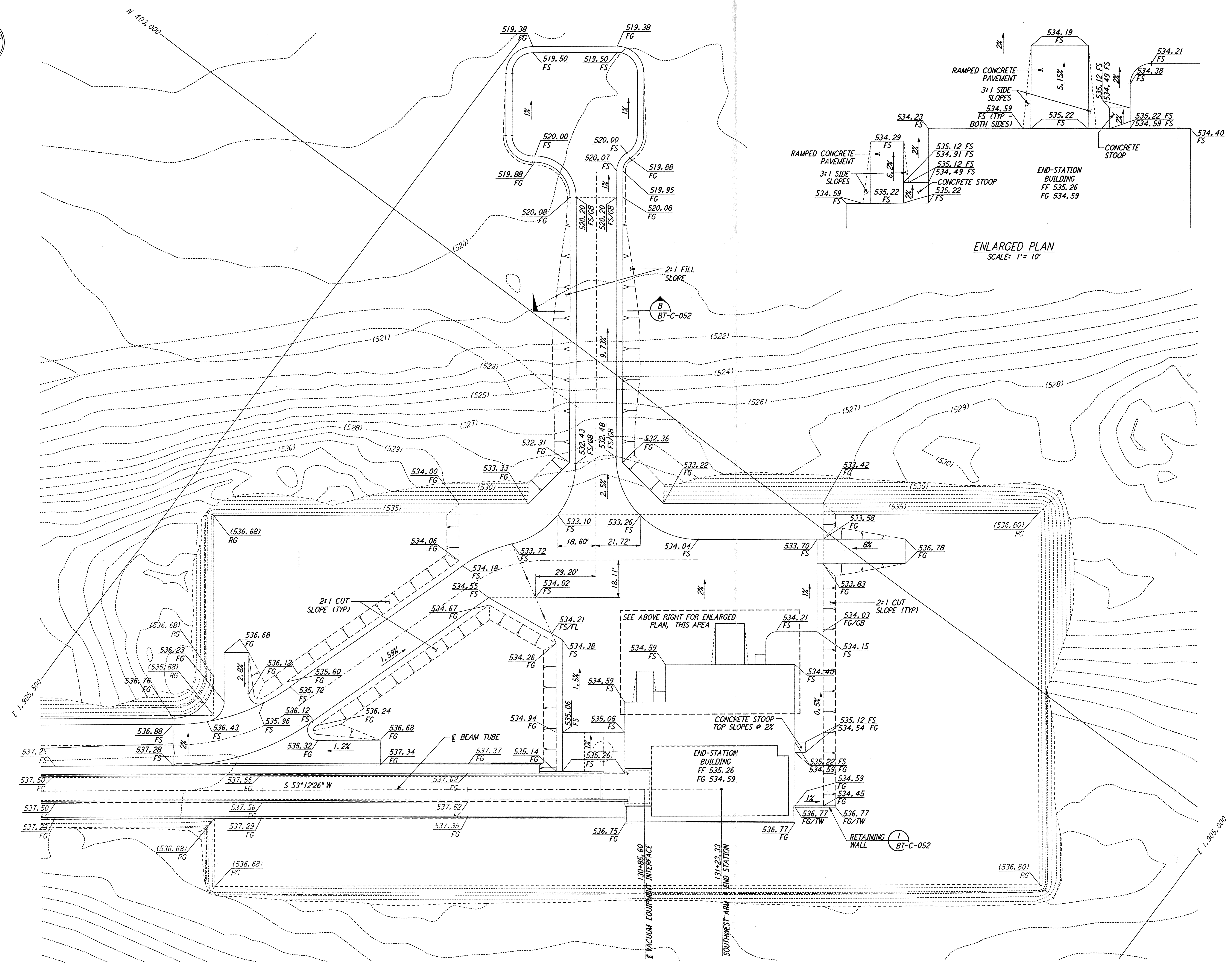
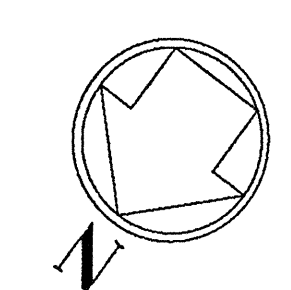


NOTES:
 1. SEE SHEET BT-C-002 FOR GENERAL NOTES, LEGEND AND ABBREVIATIONS.

This document and the design it covers are the property of **PARSONS**. They are loaned only with the borrower's expressed written agreement that they will not be reproduced, copied, loaned, exhibited, or used in any other way, except by written consent from **PARSONS** to the borrower.

This document and the design it covers are the property of **PARSONS**. They are loaned only with the borrower's expressed written agreement that they will not be reproduced, copied, loaned, exhibited, or used in any other way, except by written consent from **PARSONS** to the borrower.



NO.	DATE	BY	CHKD	ENGR	PROJ	DESCRIPTION
A	4-19-96	WRB				CHANGE ORDER NO. 4

DRAWN	WRB
CHECKED	
ENGINEER	
PROJ	

PARSONS
 100 WEST WALNUT STREET
 PASADENA, CALIFORNIA

LIGO
 CALIFORNIA INSTITUTE OF TECHNOLOGY
 MASSACHUSETTS INSTITUTE OF TECHNOLOGY

LASER INTERFEROMETER
 GRAVITATIONAL-WAVE OBSERVATORY
 BTE SITEWORK & FABRICATION - HANFORD, WA

CIVIL
 SOUTHWEST ARM
 END-STATION
 GRADING PLAN

SCALE: 1" = 20'
 CONTRACT NUMBER: PPI50969
 PROJECT NUMBER: 8094
BT - C - 046