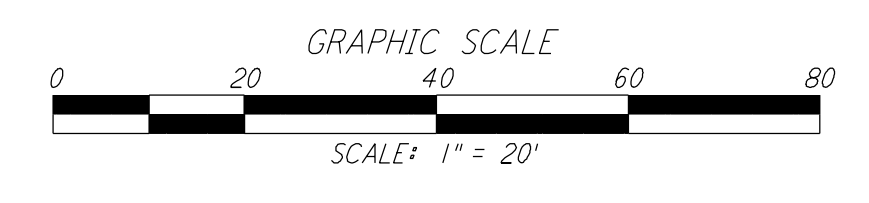
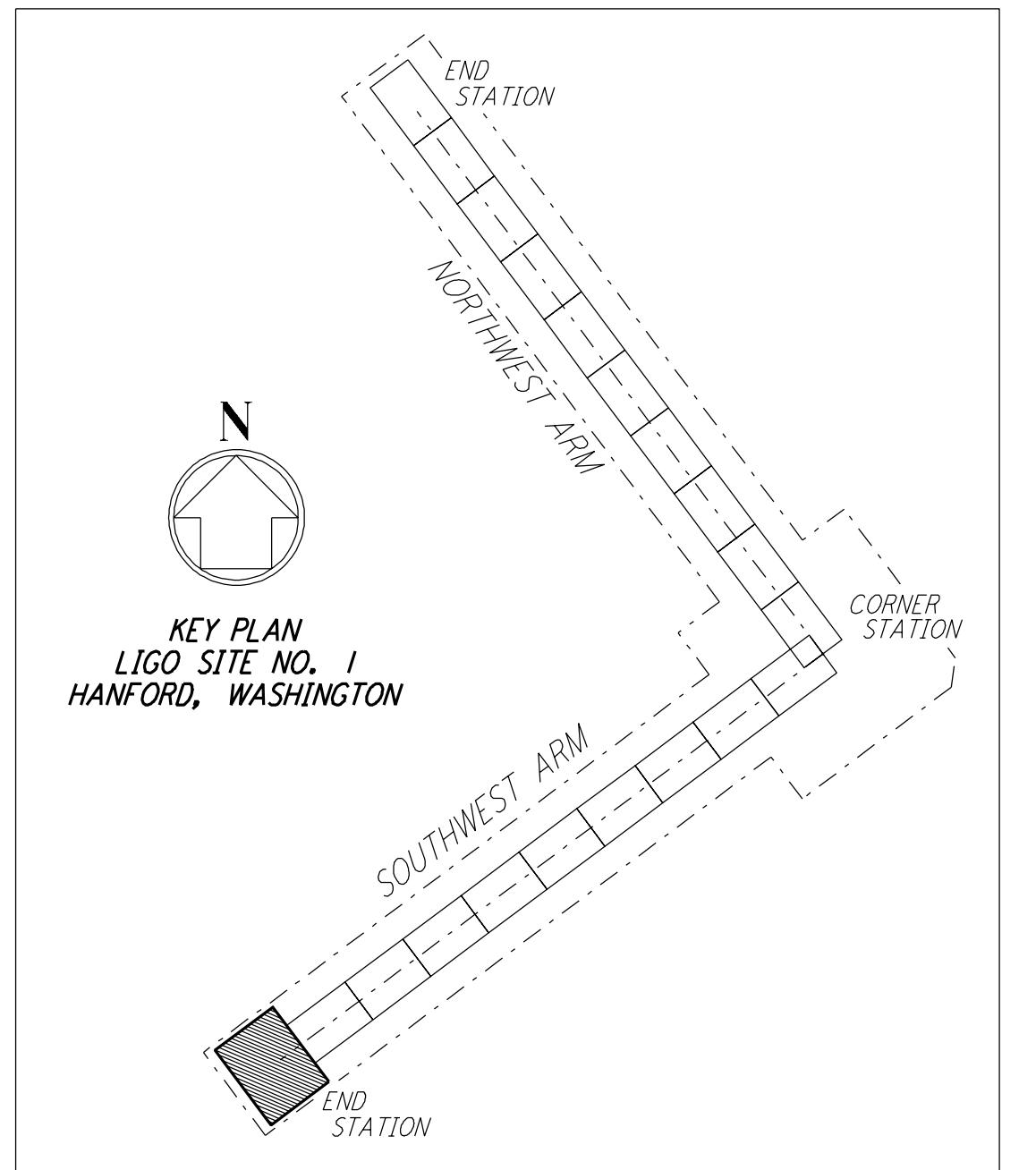
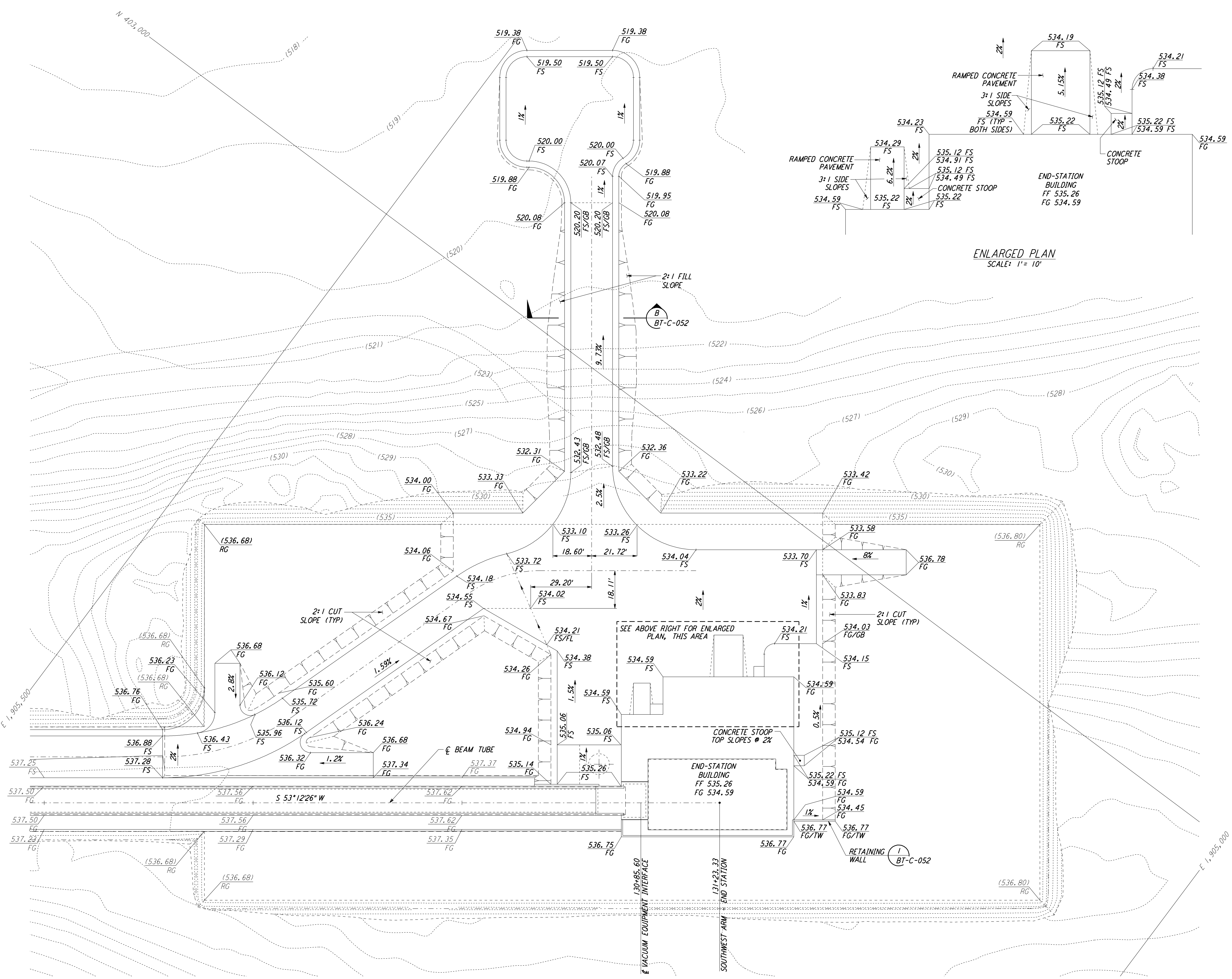
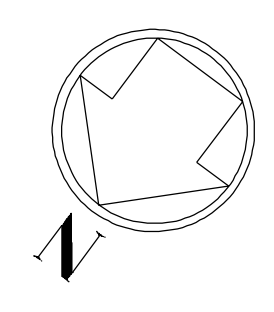


NOTES:

1. SEE SHEET BT-C-002 FOR GENERAL NOTES, LEGEND AND ABBREVIATIONS.

This document and the design it covers are the property of **PARSONS**. They are loaned only with the borrower's expressed written agreement that they will not be reproduced, copied, loaned, exhibited, or used in any other way, except by written consent from **PARSONS** to the borrower.



LIGO-D960731-A-O

DRAWING NO.	DESCRIPTION	NO.	DATE	BY	CHKD	ENGR	PROJ
		A	4-19-96	WRB			CHANGE ORDER NO. 4

DRAWN	WRB
CHECKED	
ENGINEER	
PROJ	

130+85.60
VACUUM EQUIPMENT INTERFACE

131+22.33
SOUTHWEST ARM END STATION

PARSONS

100 WEST WALNUT STREET
PASADENA, CALIFORNIA

LIGO

CALIFORNIA INSTITUTE OF TECHNOLOGY
MASSACHUSETTS INSTITUTE OF TECHNOLOGY

LASER INTERFEROMETER GRAVITATIONAL-WAVE OBSERVATORY BTE SITEWORK & FABRICATION - HANFORD, WA			
TITLE	SCALE	CONTRACT NUMBER	PROJECT NUMBER
CIVIL SOUTHWEST ARM END-STATION GRADING PLAN	1" = 20'	PP150969	8094
BT - C - 046			