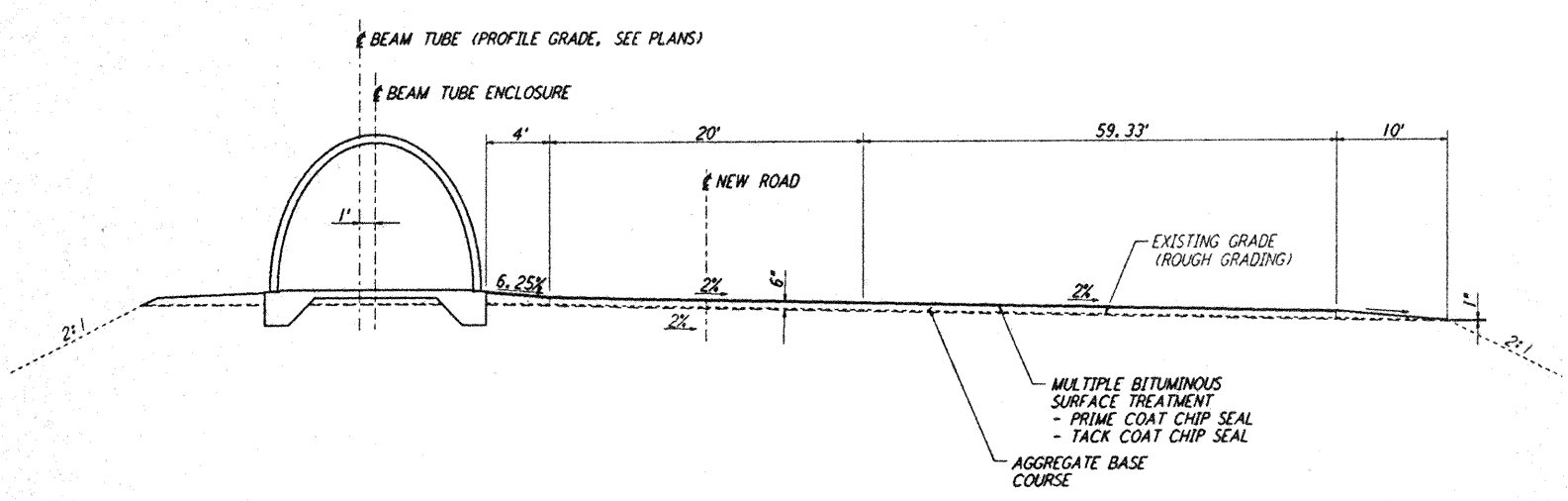


not be reproduced, copied, loaned, exhibited, or used in any other way, except by written consent from PARSONS to the borrower.

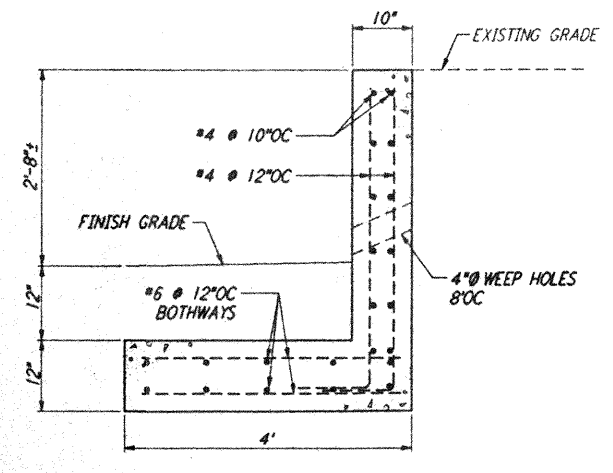
This document and the design it covers are the property of PARSONS. They are loaned only with the borrower's expressed written agreement that they will

NOTES:  
1. SEE SHEET BT-C-002 FOR GENERAL NOTES, LEGEND AND ABBREVIATIONS.

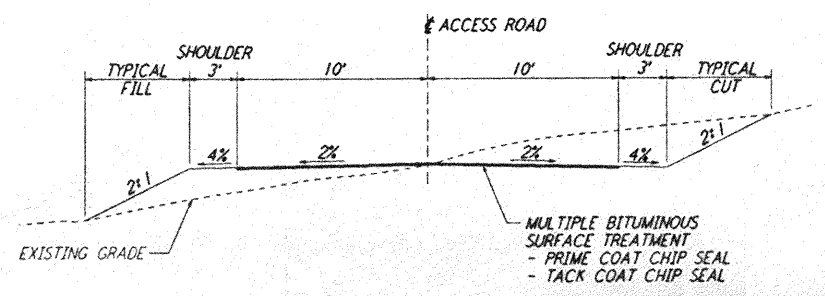


REF  
BT-C-013  
BT-C-017  
BT-C-018  
BT-C-023  
BT-C-037  
BT-C-038

(# TURNAROUNDS ALONG NORTHWEST AND SOUTHWEST ARMS)



REF  
BT-C-052  
BT-C-046



REF  
BT-C-021/022  
BT-C-025/026  
BT-C-041/042  
BT-C-045/046

(ACCESS ROAD FROM MID/END STATION TO CHILLER YARD PAD)

NO.	DATE	BY	CHKD	ENGR	PROJ	DESCRIPTION
A	4-19-96	WRB				CHANGE ORDER NO. 4

DRAWN	WRB
CHECKED	
ENGINEER	
PROJ	

**PARSONS**  
100 WEST WALNUT STREET  
PASADENA, CALIFORNIA

**LIGO**  
CALIFORNIA INSTITUTE OF TECHNOLOGY  
MASSACHUSETTS INSTITUTE OF TECHNOLOGY

LASER INTERFEROMETER  
GRAVITATIONAL-WAVE OBSERVATORY  
BTE SITEWORK & FABRICATION - HANFORD, WA

CIVIL GRADING SECTIONS & DETAILS

SCALE: AS NOTED  
CONTRACT NUMBER: PP150969  
PROJECT NUMBER: 8094  
SHEET NUMBER: BT-C-052  
REVISION: 1