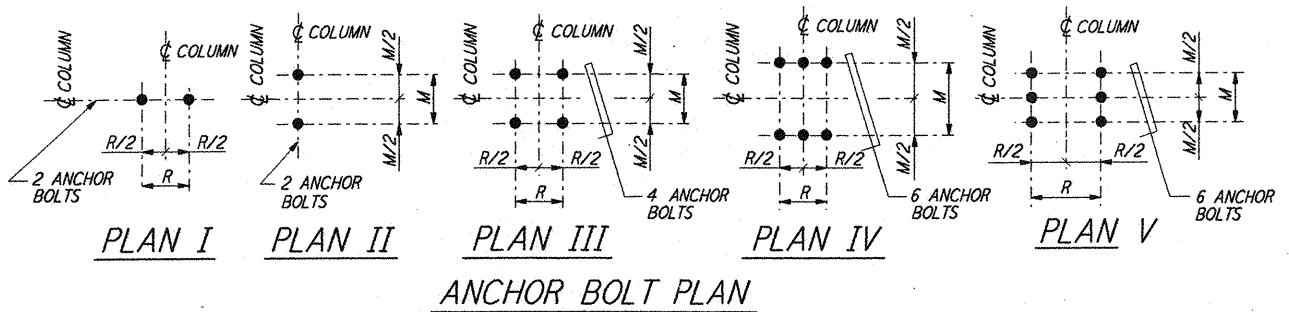
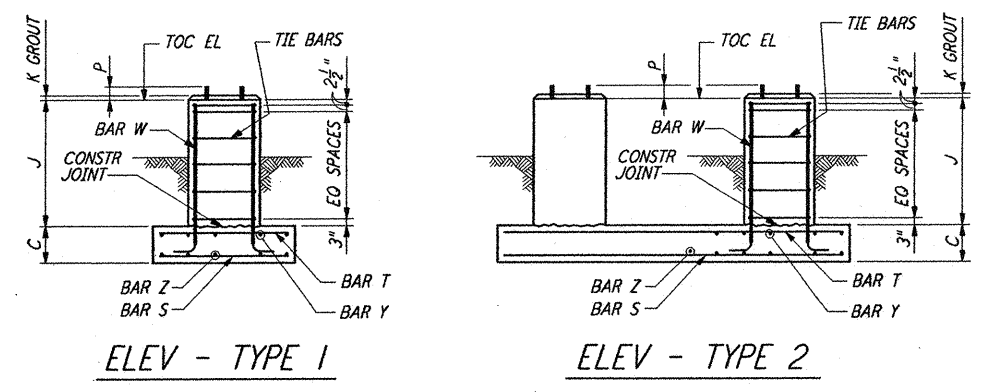
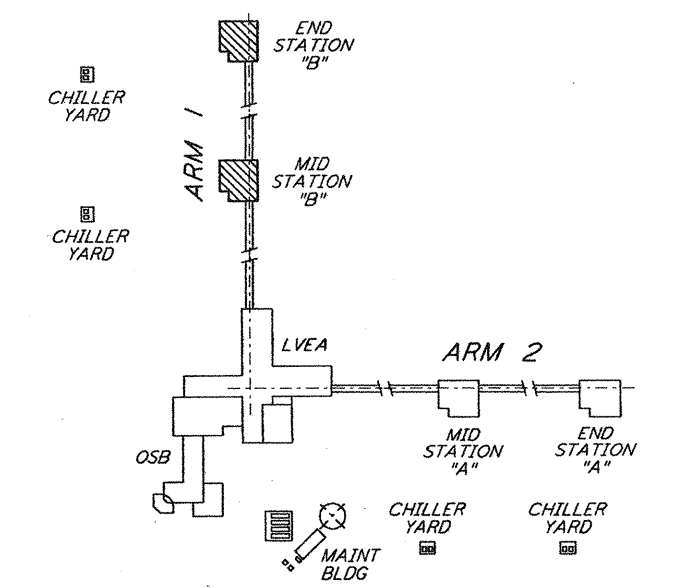


- NOTES:**
1. CONSTRUCTION SHALL COMPLY WITH ALL THE REQUIREMENTS OF THE GENERAL NOTES ON DRAWING BT-S-601.
 2. THE BAR SPACING IS BASED ON CENTER TO CENTER OF TIE SET.
 3. FOR ANCHOR BOLT DETAILS SEE DRAWING BT-S-603.
 4. FOUNDATION SCHEDULE SHOWN IS FOR ONE (1) BUILDING ONLY. TWO (2) BUILDINGS REQUIRED.

TIE REINFORCEMENT NOTES:
 1A. THESE BARS MUST BE TIED AS SHOWN BY DASHED LINES WHEN X DISTANCE IS OVER 6 INCHES.
 2A. THESE BARS NEED NOT BE TIED WHEN X DISTANCE IS 6 INCHES OR LESS.
 3A. ALTERNATE 90° HOOKS IN COLUMNS.



NO OF FDNS REQD	FOUNDATION LOCATION	TOP OF CONC EL	FOUNDATION TYPE		DIMENSIONS													ANCHOR BOLTS PER PIER					REINFORCING PER FOUNDATION							CONC CY	FDN LOC PLAN	REMARKS												
			PLAN	ELEV	A	B	C	D	F	G	H	J	K	M	R	N	ANCHOR BOLT PLAN	TYPE	NO PER PIER	SIZE D	L	P	BAR S NO SIZE	BAR Z NO SIZE	BAR T NO SIZE	BAR Y NO SIZE	BAR W NO SIZE	TIE BAR TYPE	SIZE				NO	NO REQD										
2	C3, C4	100'-0"	A	1	3'-6"	3'-6"	1'-0"	10"	10"	10"	10"	10"	10"	1'-8"	1"	7"	7"	—	III	2	4	1"	1'-4"	4"	5"	#4	5	#4	—	—	—	—	B	#5	B	#4	4	1.3	BT-S-604					
1	D4	100'-0"	A	1	5'-0"	5'-0"	1'-0"	10"	10"	10"	10"	10"	1'-3 1/2"	10"	1'-8"	1"	7"	7"	—	III	2	4	1"	1'-4"	4"	7"	#4	7	#4	7	#4	7	#4	7	#4	B	#6	B	#4	4	1.2	BT-S-604		
1	D5	100'-0"	A	1	5'-0"	5'-0"	1'-0"	10"	10"	10"	10"	10"	1'-3 1/2"	10"	1'-8"	1"	7"	7"	—	III	2	4	1"	1'-4"	4"	7"	#4	7	#4	7	#4	7	#4	7	#4	B	#6	B	#4	4	1.2	BT-S-604		
2	C1, C2	100'-0"	A	1	15'-0"	8'-0"	2'-0"	1'-3 1/2"	12"	1'-3 1/2"	12"	12"	4'-0"	1"	7"	7"	—	III	2	4	1"	1'-4"	4"	18	#6	10	#6	18	#6	10	#6	8	#7	B	#4	6	9.7	BT-S-604						
1	C5	100'-0"	A	1	15'-0"	8'-0"	2'-0"	1'-3 1/2"	12"	1'-3 1/2"	12"	12"	4'-0"	1"	7"	7"	—	III	2	4	1"	1'-4"	4"	18	#6	10	#6	18	#6	10	#6	8	#6	B	#4	6	9.7	BT-S-604						
1	D2	100'-0"	B	2	6'-0"	26'-0"	2'-0"	1'-3 1/2"	12"	1'-3 1/2"	12"	12"	1'-8"	1"	7"	7"	20'-0"	III	2	4	1"	1'-4"	4"	8	#6	31	#6	8	#6	31	#6	8	#6	B	#4	4	12.2	BT-S-604						
—	A2, A3, B1, B2, B3, B5	100'-0"	—	—	—	—	—	—	—	—	—	—	—	—	1"	7"	7"	—	III	2	4	1"	1'-4"	4"	—	—	—	—	—	—	—	—	—	—	—	—	—	—	—	—	BT-S-604	FOR ANCHOR BOLTS ONLY		
—	A1, A4, A5, B4	100'-0"	—	—	—	—	—	—	—	—	—	—	—	—	1"	7"	7"	—	III	1	4	1"	1'-4"	4"	—	—	—	—	—	—	—	—	—	—	—	—	—	—	—	—	—	—	BT-S-604	FOR ANCHOR BOLTS ONLY



KEY PLAN
LIGO-D960741-00-0

LASER INTERFEROMETER GRAVITATIONAL-WAVE OBSERVATORY BTE SITWORK & FABRICATION - HANFORD, WA		
TITLE	SCALE	CONTRACT NUMBER
STRUCTURAL MID AND END STATIONS "B" FOUNDATION SCHEDULE AND DETAILS	NONE	PP150969
PROJECT NUMBER	8094	
SHEET NUMBER		REVISIONS
BT-S-607		△

This document and the design it covers are the property of PARSONS. They are loaned only with the borrower's expressed written agreement that they will not be reproduced, copied, loaned, exhibited, or used in any other way, except by written consent from PARSONS to the borrower.

REVISED	NO.	DATE	BY	CHKD	ENGR	PROJ	DESCRIPTION
0	1-22-99	MET	—	—	—	MDW	ISSUED FOR AS BUILT
A	4-19-96	MCS	KS	BP	—	—	CHANGE ORDER #4

DRAWN	MCS
CHECKED	
ENGINEER	
PROJ	

AS-BUILT DRAWINGS

PARSONS
 100 WEST WALNUT STREET
 PASADENA, CALIFORNIA

LIGO
 CALIFORNIA INSTITUTE OF TECHNOLOGY
 MASSACHUSETTS INSTITUTE OF TECHNOLOGY