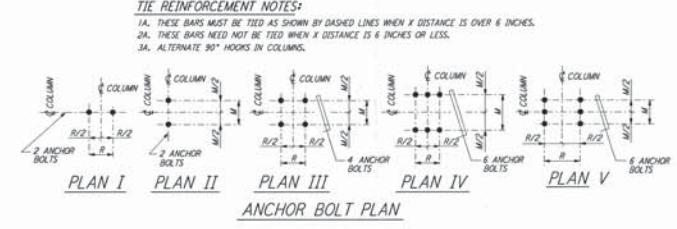
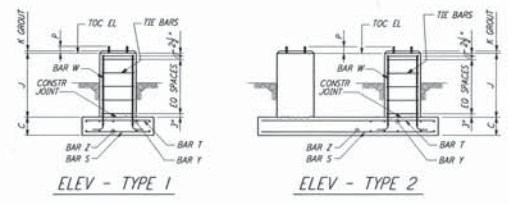
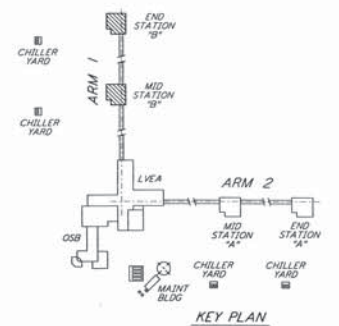


- NOTES:**
- CONSTRUCTION SHALL COMPLY WITH ALL THE REQUIREMENTS OF THE GENERAL NOTES ON DRAWING BT-S-601.
  - THE BAR SPACING IS BASED ON CENTER TO CENTER OF TIE SET.
  - FOR ANCHOR BOLT DETAILS SEE DRAWING BT-S-602.
  - FOUNDATION SCHEDULE SHOWN IS FOR ONE (1) BUILDING ONLY. TWO (2) BUILDINGS REQUIRED.



FOUNDATION NO. OR CONC. RECORD	FOUNDATION LOCATION	TOP OF CONC. EL.	FOUNDATION TYPE	PLAN	ELEV	DIMENSIONS																ANCHOR BOLTS PER PIER				REINFORCING PER FOUNDATION												CONC. CT	FON LOC PLAN	REMARKS
						A	B	C	D	E	F	G	H	J	K	M	R	N	ANCHOR BOLT PLAN	NO	PER PIER	SIZE	L	P	BAR 5 NO	BAR 5 SIZE	BAR 2 NO	BAR 2 SIZE	BAR T NO	BAR T SIZE	BAR Y NO	BAR Y SIZE	BAR W NO	BAR W SIZE	TIE BAR NO	TIE BAR SIZE	NO. OF ANCHORS			
2	C3, C4	100'-0"	A	1	3'-8"	3'-8"	1'-0"	10"	10"	10"	10"	1'-8"	1"	7"	7"	---	III	2	4	1"	1'-4"	4"	5	4	5	4	---	---	8	4	5	8	4	4	1,3	BT-S-604				
1	D4	100'-0"	A	1	5'-0"	5'-0"	1'-0"	10"	10"	1'-3 1/2"	10"	1'-8"	1"	7"	7"	---	III	2	4	1"	1'-4"	4"	7	4	7	4	7	4	7	4	8	4	4	1,2	BT-S-604					
1	D5	100'-0"	A	1	5'-0"	5'-0"	1'-0"	10"	10"	1'-3 1/2"	1'-3 1/2"	10"	1'-8"	1"	7"	7"	---	III	2	4	1"	1'-4"	4"	7	4	7	4	7	4	8	4	4	1,2	BT-S-604						
2	C1, C2	100'-0"	A	1	15'-0"	8'-0"	2'-0"	1'-3 1/2"	12"	1'-3 1/2"	12"	4'-0"	1"	7"	7"	---	III	2	4	1"	1'-4"	4"	18	4	10	4	18	4	10	4	8	4	6	5,7	BT-S-604					
1	C5	100'-0"	A	1	15'-0"	8'-0"	2'-0"	12"	1'-3 1/2"	12"	12"	4'-0"	1"	7"	7"	---	III	2	4	1"	1'-4"	4"	18	4	10	4	18	4	10	4	8	4	6	5,7	BT-S-604					
1	D2	100'-0"	A	1	15'-0"	8'-0"	2'-0"	1'-3 1/2"	12"	1'-3 1/2"	12"	1'-8"	1"	7"	7"	---	III	2	4	1"	1'-4"	4"	8	4	31	4	8	31	4	8	4	4	12,2	BT-S-604						
1	D3	100'-0"	B	2	6'-0"	26'-0"	2'-0"	12"	12"	1'-3 1/2"	12"	1'-8"	1"	7"	7"	20'-0"	III	2	4	1"	1'-4"	4"	---	---	---	---	---	---	---	---	---	---	---	---	---	BT-S-604				
---	A2, A3, B1, B2, B3, B5	100'-0"	---	---	---	---	---	---	---	---	---	---	---	1"	7"	7"	---	III	2	4	1"	1'-4"	4"	---	---	---	---	---	---	---	---	---	---	---	---	BT-S-604				
---	A1, A4, A5, B4	100'-0"	---	---	---	---	---	---	---	---	---	---	---	1"	7"	7"	---	III	1	4	1"	1'-4"	4"	---	---	---	---	---	---	---	---	---	---	---	---	BT-S-604				



This document and the design it covers are the property of PARSONS. It is to be used only for the project and site for which it was prepared. It is not to be reproduced, copied, loaned, exhibited, or used in any way, except by written consent from PARSONS.

REFERENCES Q 1-22-99 MET -- -- MDW ISSUED FOR AS BUILT A 4-19-96 MCS KS BP CHANGE ORDER #4	AS-BUILT DRAWINGS	100 WEST WALNUT STREET PASADENA, CALIFORNIA	CALIFORNIA INSTITUTE OF TECHNOLOGY MASSACHUSETTS INSTITUTE OF TECHNOLOGY	LASER INTERFEROMETER GRAVITATIONAL-WAVE OBSERVATORY BTE SITENWORK & FABRICATION - HANFORD, WA	
				STRUCTURAL MID AND END STATIONS "B" FOUNDATION SCHEDULE AND DETAILS	
DRAWING NO. DESCRIPTION		TITLE		NONE	PP150969 8094
5		4		BT-S-607	