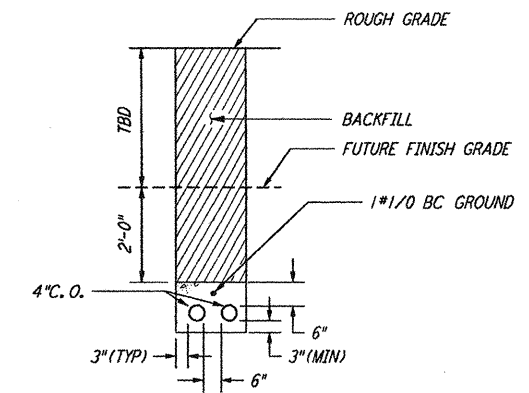
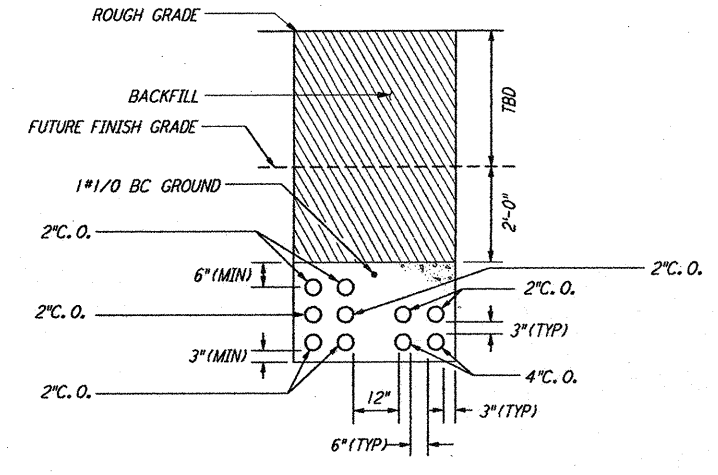
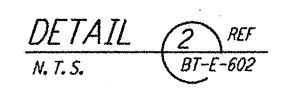
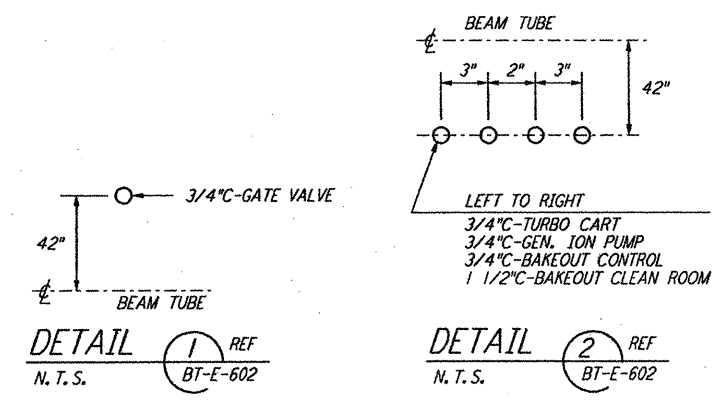
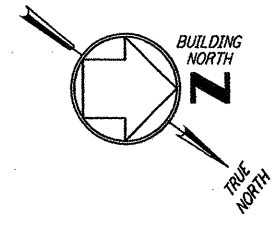
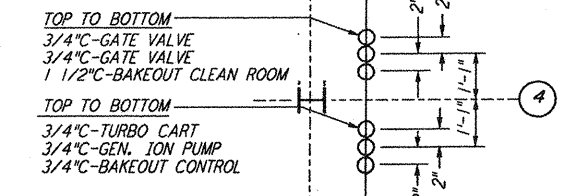
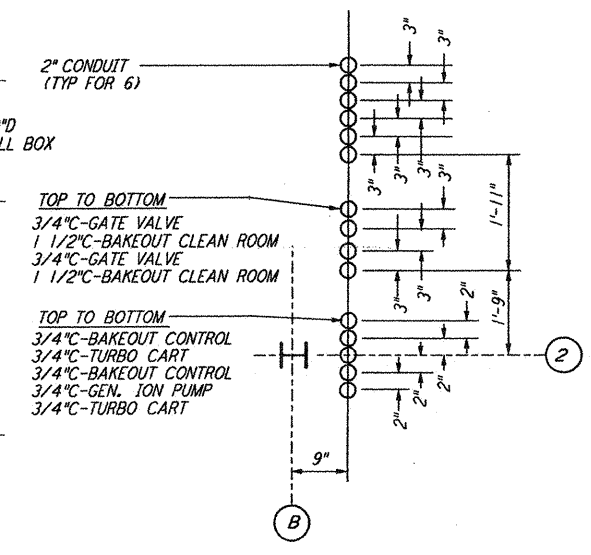


NOTES:

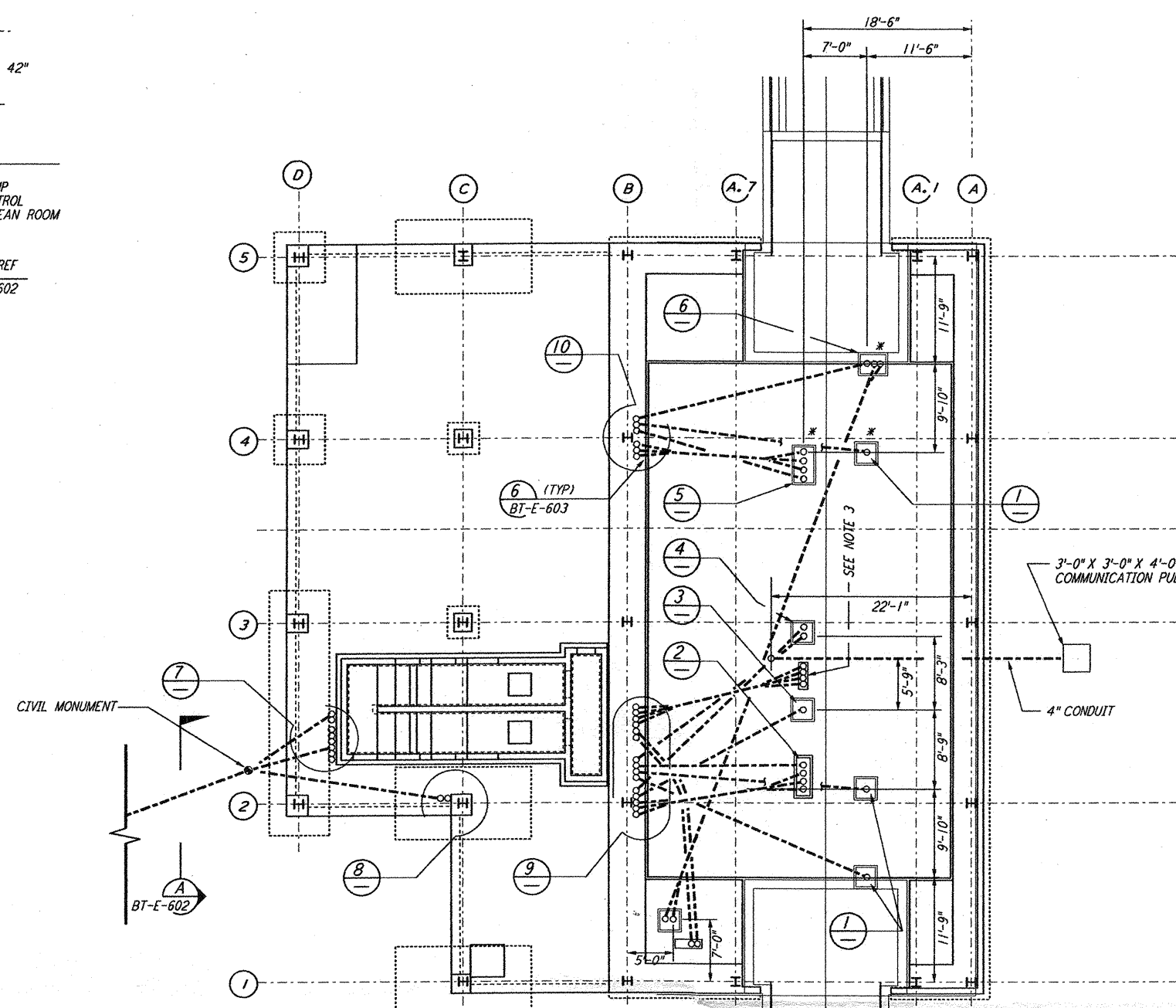
- FOR STANDARD INSTALLATION DETAILS SEE DWG. BT-E-603 AND BT-E-604.
- ALL RUNS ARE SHOWN DIAGRAMMATICALLY ONLY. CONTRACTOR SHALL COORDINATE INSTALLATION WITH OTHER DISCIPLINES.
- COORDINATES OF CDS POWER CONDUIT STUB-UPS SHALL BE COORDINATED WITH THE CONSTRUCTION MANAGER.



DUCT BANK SECTION B REF BT-E-602
N.T.S.

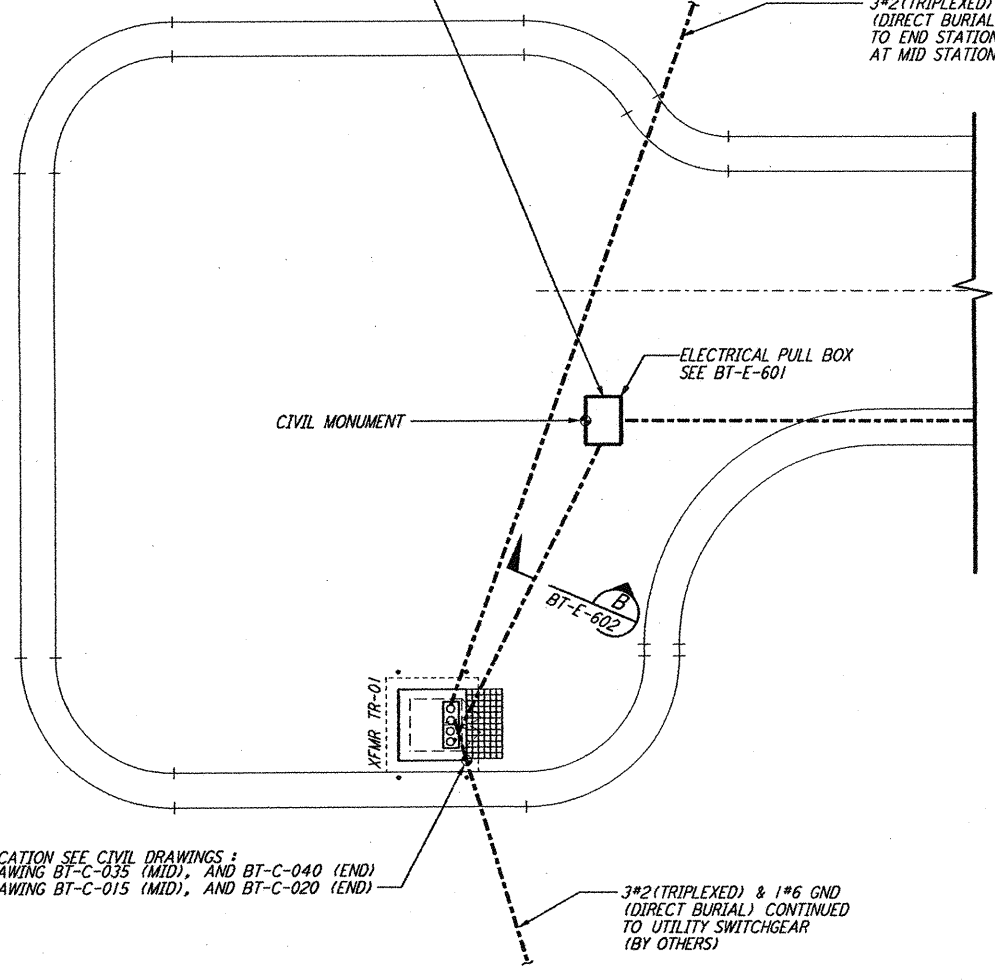


DETAIL 10 REF BT-E-602
N.T.S.

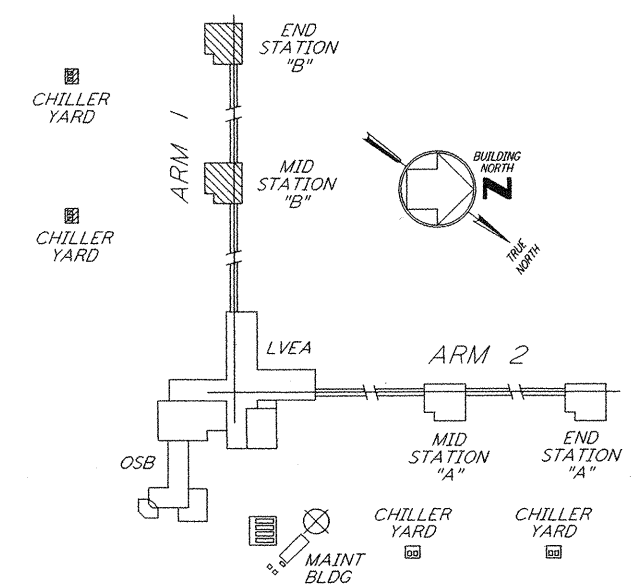
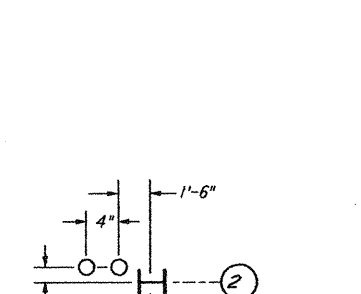
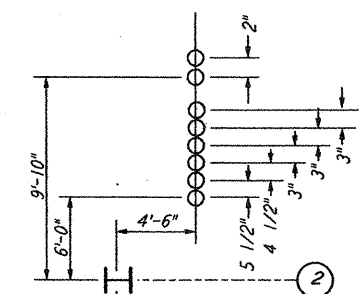
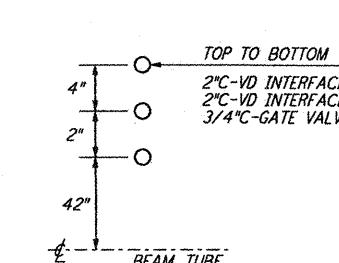
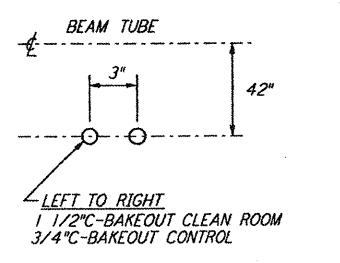
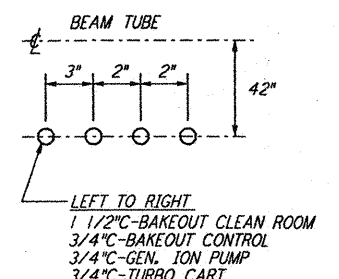
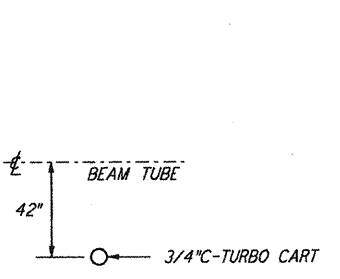


* THESE CONDUITS ARE ONLY REQUIRED AT THE MID STATIONS.

PULLBOX AND DUCTBANK LOCATION PER CIVIL PLAN
 ARM 1 (SOUTH-WEST) DRAWING BT-C-043 (MID), AND BT-C-047 (END)
 ARM 2 (NORTH-WEST) DRAWING BT-C-023 (MID), AND BT-C-027 (END)



FOR THIS COORDINATE LOCATION SEE CIVIL DRAWINGS:
 ARM 1 (SOUTH-WEST) DRAWING BT-C-035 (MID), AND BT-C-040 (END)
 ARM 2 (NORTH-WEST) DRAWING BT-C-015 (MID), AND BT-C-020 (END)



0 8 16 24 32 FT
 1/8" = 1'-0"

LIGO-D960744-00-0

NO.	DATE	BY	CHKD	ENGR	PROJ	DESCRIPTION
0	1-22-99	MET				ISSUED FOR AS BUILT
A	4-15-96					CHANGE ORDER #4

AS-BUILT DRAWINGS

DRAWN: M.M.
 CHECKED: M.M.
 ENGINEER: M.M.
 PROJ: M.M.

PARSONS
 100 WEST WALNUT STREET
 PASADENA, CALIFORNIA

LIGO
 CALIFORNIA INSTITUTE OF TECHNOLOGY
 MASSACHUSETTS INSTITUTE OF TECHNOLOGY

LASER INTERFEROMETER
 GRAVITATIONAL-WAVE OBSERVATORY
 BTE SITEWORK & FABRICATION - HANFORD, WA

TITLE: ELECTRICAL MID & END STATIONS "B" UNDERGROUND PLAN
 SCALE: AS NOTED
 SHEET NUMBER: PP150969
 REVISIONS: 8094
BT-E-602

This document and the design it covers are the property of PARSONS. They are loaned only with the borrower's expressed written agreement that they will not be reproduced, copied, loaned, exhibited, or used in any other way, except by written consent from PARSONS to the borrower.

Thu Jan 21 14:47:26 1999 CAPLOT\DUKE\S3-V3882.DWG 52885 K:\V3882\ee602.dwg