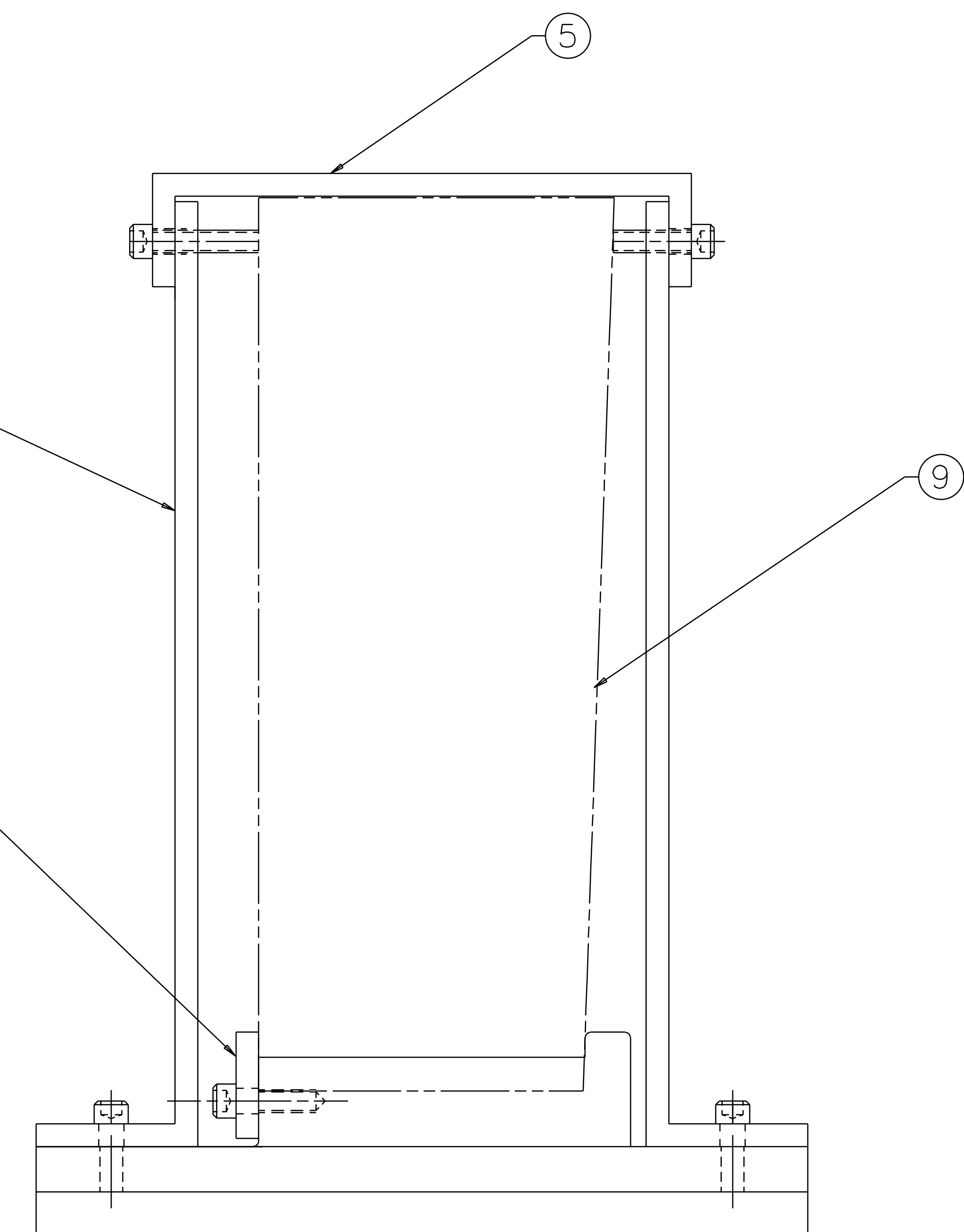
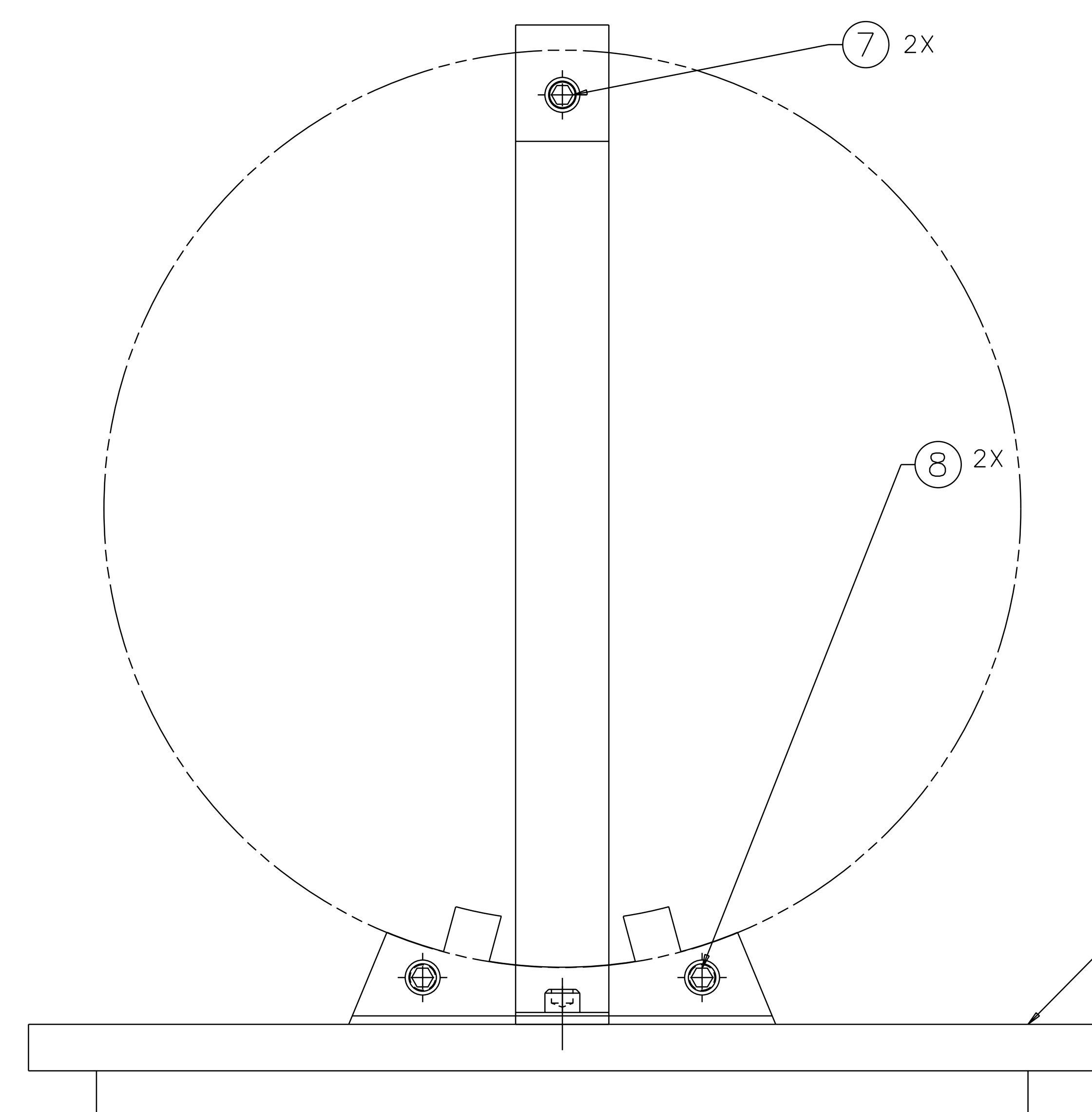
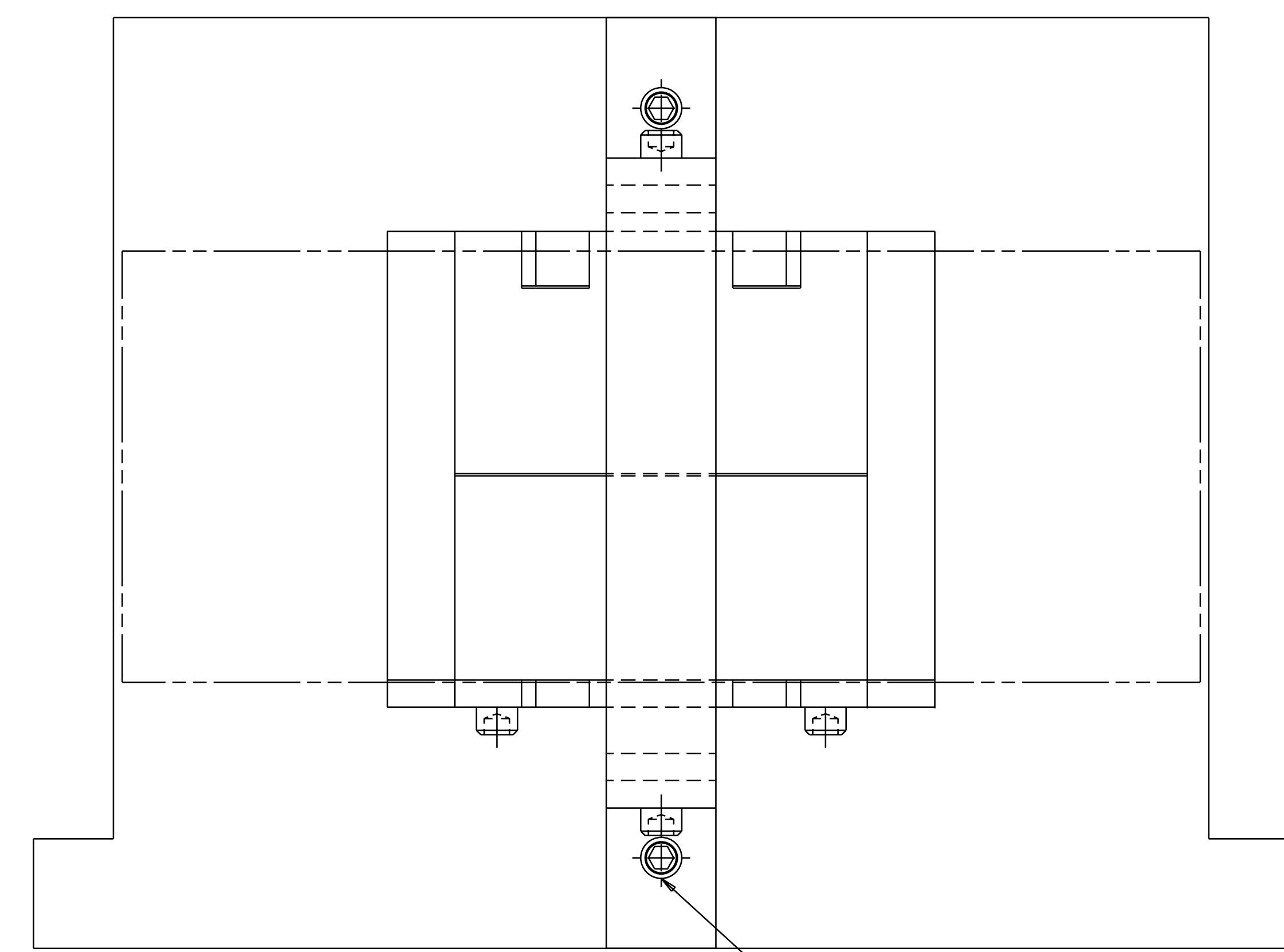


NOTES: (UNLESS OTHERWISE SPECIFIED)  
 1. THIS FIXTURE IS FOR A  $\phi 9.843'' \times 3.937''$   
 THICK OPTIC ( $\phi 25\text{cm} \times 10\text{cm}$  THICK).  
 ② THE LENGTH OF ITEM NO. 7 DEPENDS  
 ON THE THICKNESS OF THE OPTIC.  
 THE SCREW LENGTH MAY VARY FROM  
 1.00 TO 1.50.

REV	DATE	DRAWN BY	CHECKED	DCC	DCN/DESCRIPTION
A	2/13/98	J. Hazel			E980016/INITIAL RELEASE
B	2/27/98	J. Hazel			E980056/ADD NOTE: SH3, ZONE E4
C	7/14/98	J. Romie			E990259/TEFLON TO PFA 440HP



REF	QTY	DESCRIPTION	MATERIAL	ZONE
1	1	OPTIC, $\phi 9.84 \times 3.94$ THICK		9
2	2	SCREW, SHCS, 1/4-20x.75	STAINLESS	8
2	2	SCREW, SHCS, 1/4-20x1.00(2)	TEFLON	7
2	2	SCREW, SHCS, 1/4-20x.63	STAINLESS	6
1	1	DETAIL, SHEET 3 PFA 440HP STRAP	PFA 440HP, PRESHRUNK	5
2	2	DETAIL, SHEET 3 METAL BRACKET	ALUMINUM, 6061-T6	4
1	1	DETAIL, SHEET 3 PFA 440HP BRACKET	PFA 440HP, PRESHRUNK	3
1	1	DETAIL, SHEET 2 CRADLE	PFA 440HP, PRESHRUNK	2
1	1	BASE PLATE	6061-T6 ALUMINUM, 10.0 X 8.5 X .5	1

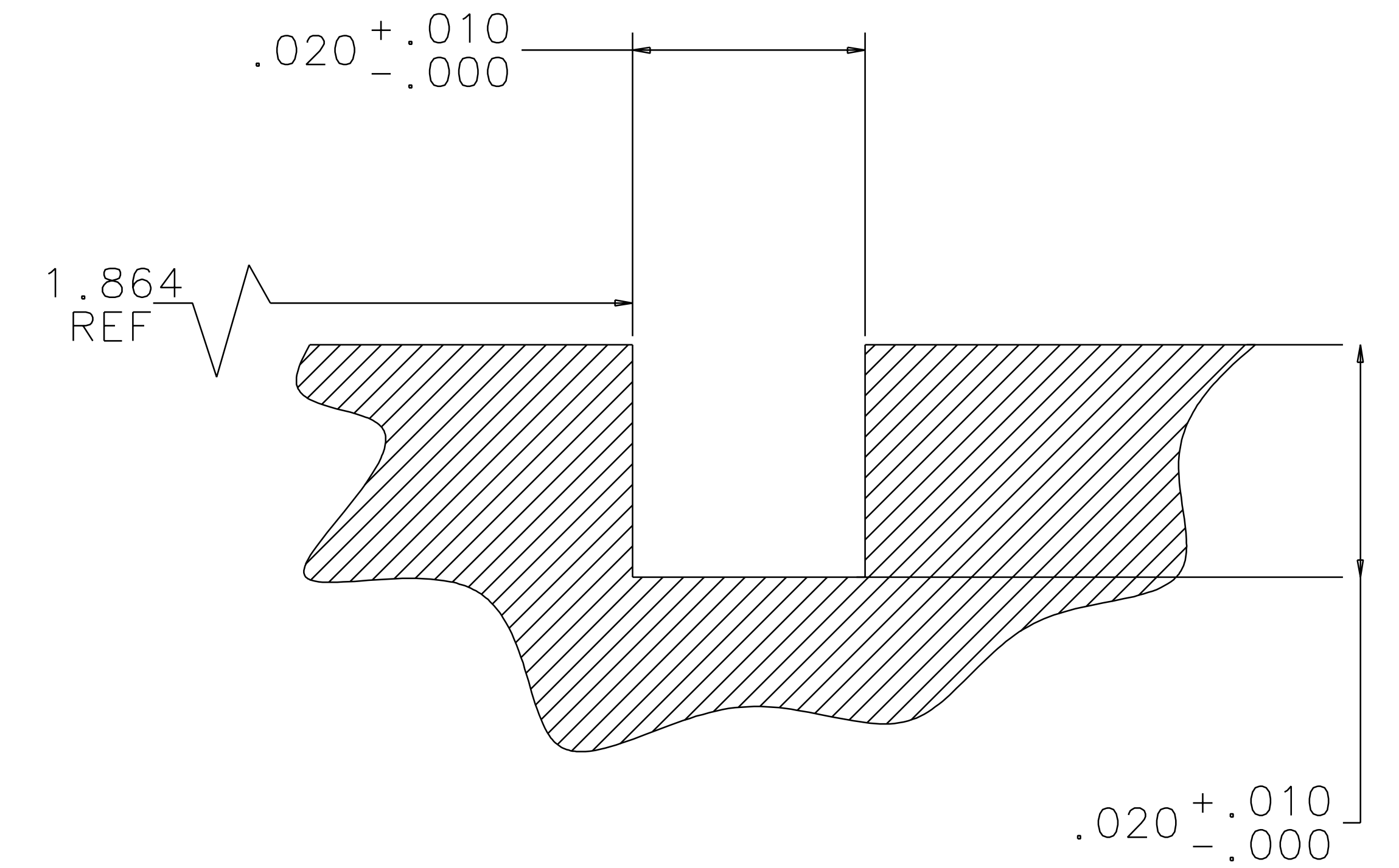
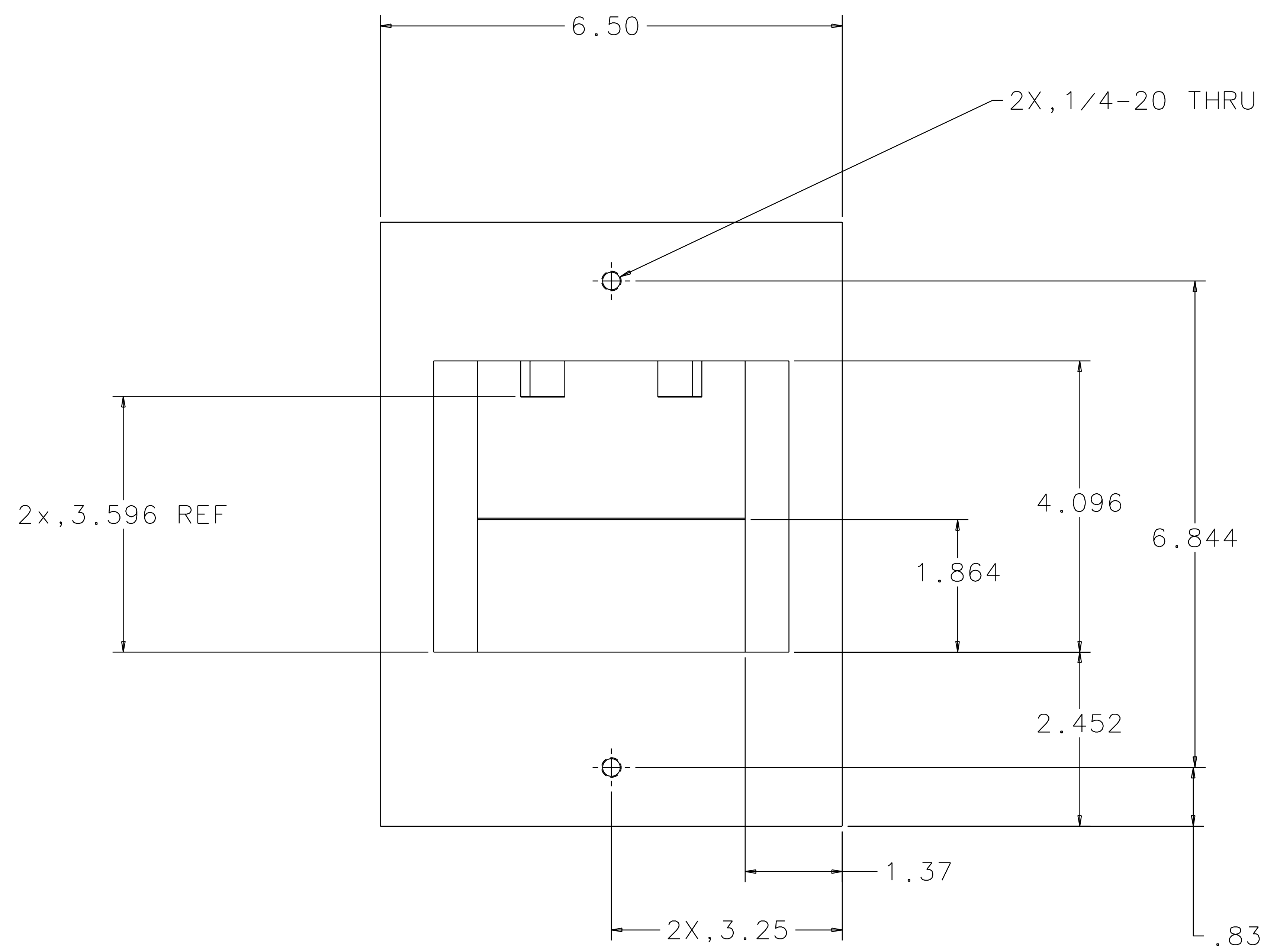
  

UNLESS OTHERWISE SPECIFIED	CONTRACT NO.	DATE	TITLE
TOLERANCES ARE: DECIMALS ANGLES 0.XX $\pm$ 0.01 0.XXX $\pm$ 0.005 ANGLES $\pm$ 0.5° DO NOT SCALE DRAWING	CONF-98-000	5/96	LIGO CALIFORNIA INSTITUTE OF TECHNOLOGY MASSACHUSETTS INSTITUTE OF TECHNOLOGY
DRAWN J. Hazel	CHECKED	ISSUED	SCALE 1/1
FILE LOCATION /home/dcc/docs/D960753.pdf	SIMILAR TO	ACT. WT	SCALE 1/1

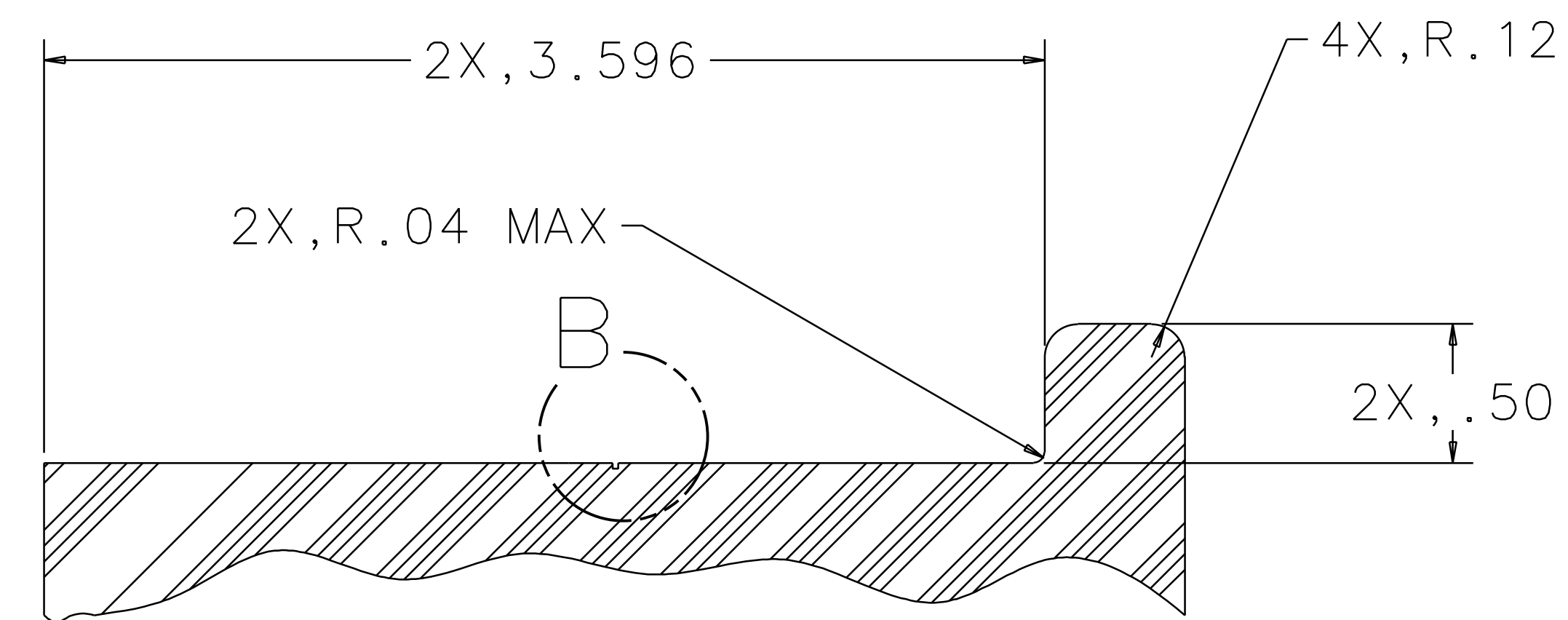
FILE LOCATION	SIMILAR TO	ACT. WT	CALC. WT	SCALE	SHEET	OF	REV
/home/dcc/docs/D960753.pdf				1/1	1	3	C

1 2 3 4 5 6 7 8

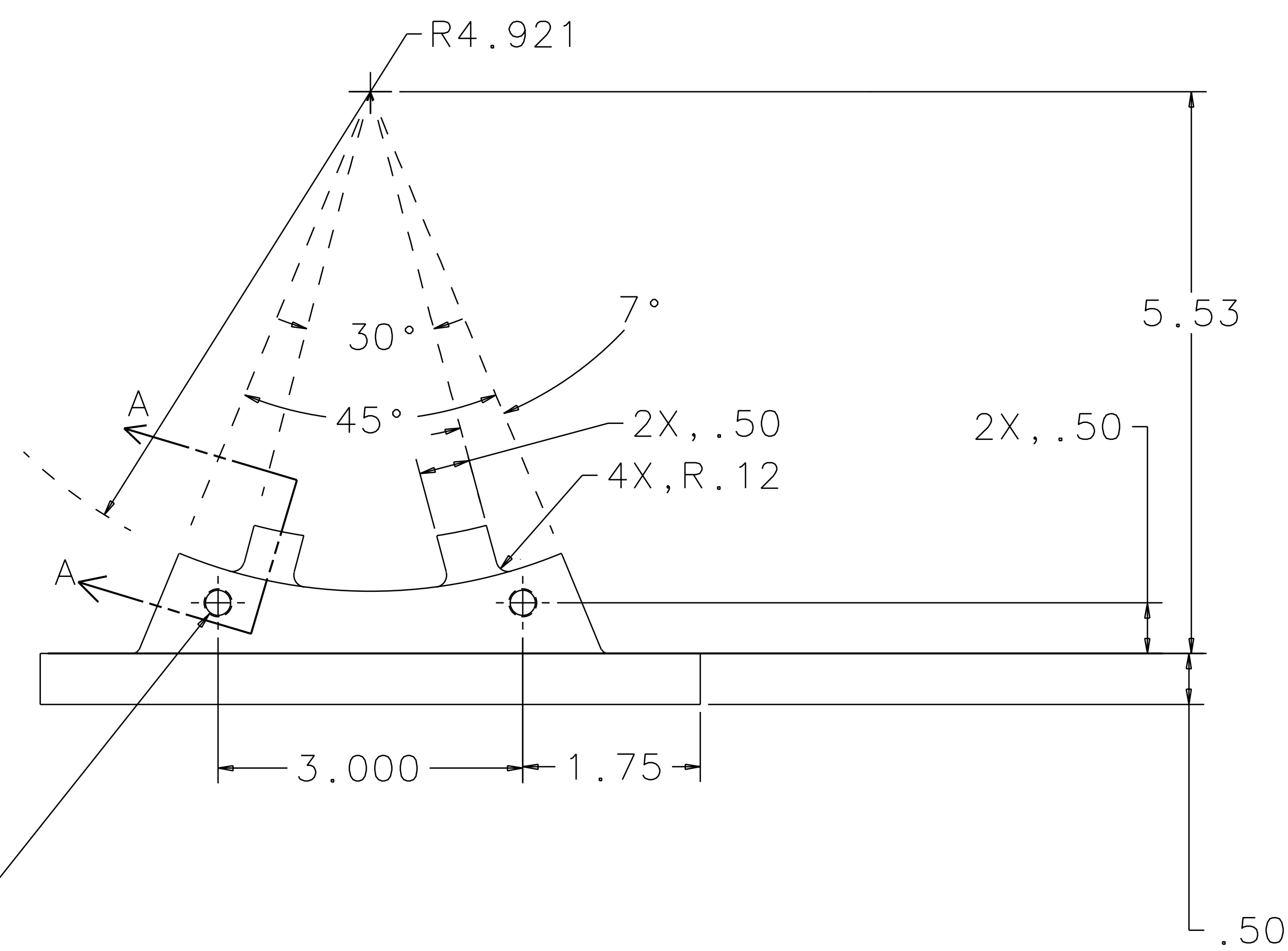
REV	DATE	DRAWN BY	CHECKED	DCC	DCN/DESCRIPTION
A	2/13/98	J. Hozel			E980016/INITIAL RELEASE
B	2/27/98	J. Hozel			E980056/ADD NOTE: SH3, ZONE E4
C	7/14/99	J. Romie			E990259/TEFLON TO PFA 440HP



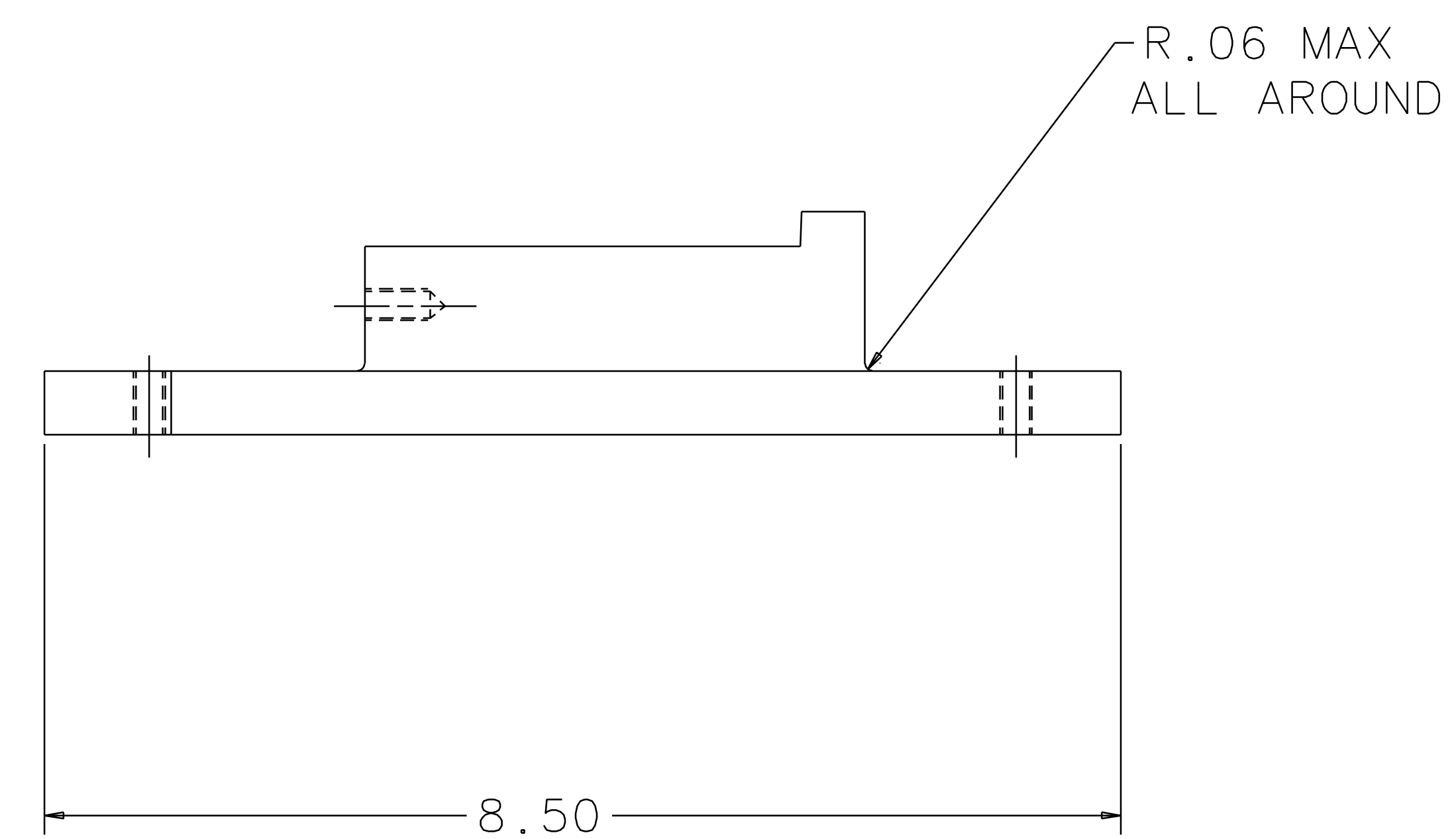
SECTION B  
100:1 SCALE  
TYPICAL RADIAL PROFILE



SECTION AA  
SCALE 2:1



2X, 1/4-20 x .63 DP MIN

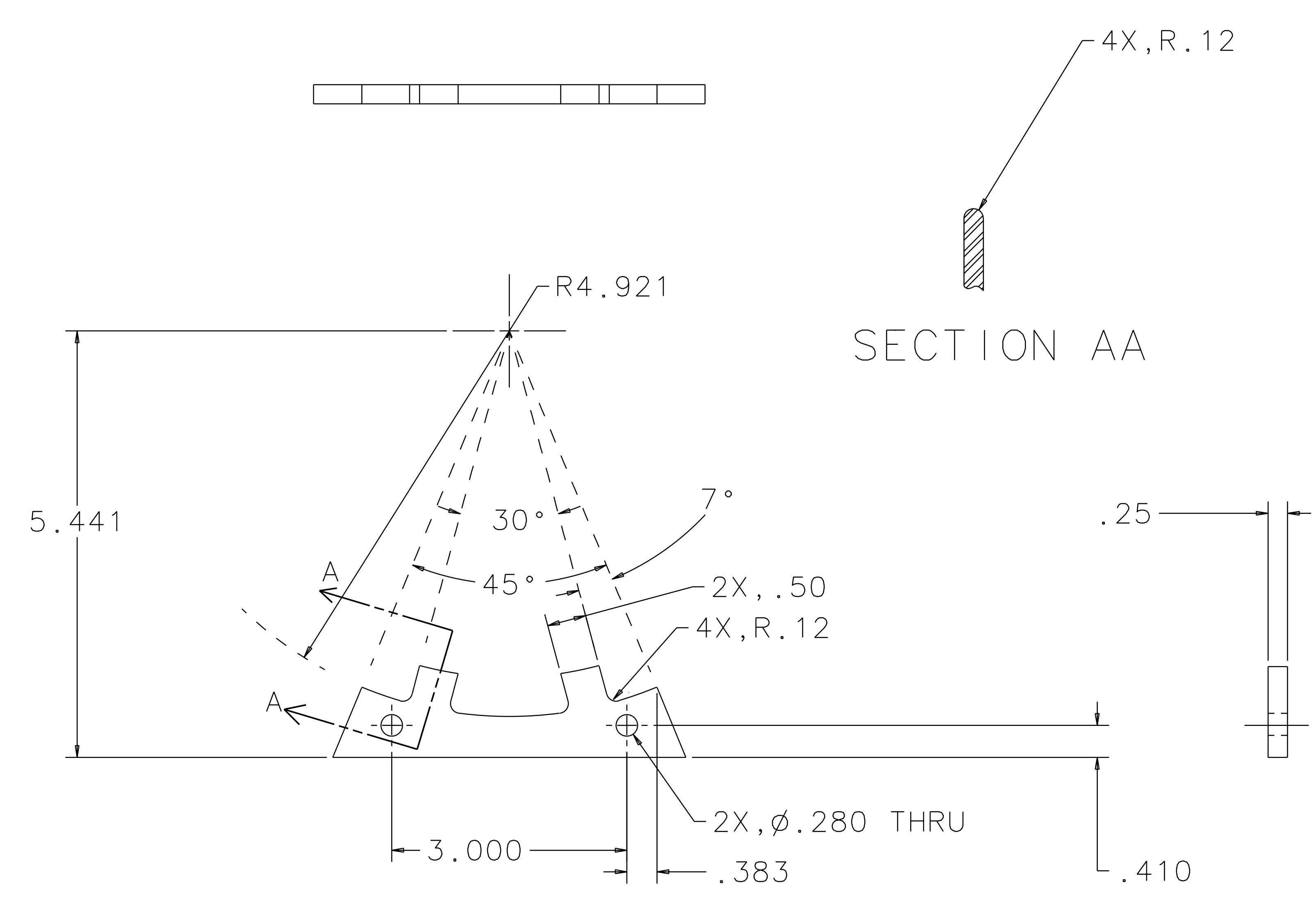
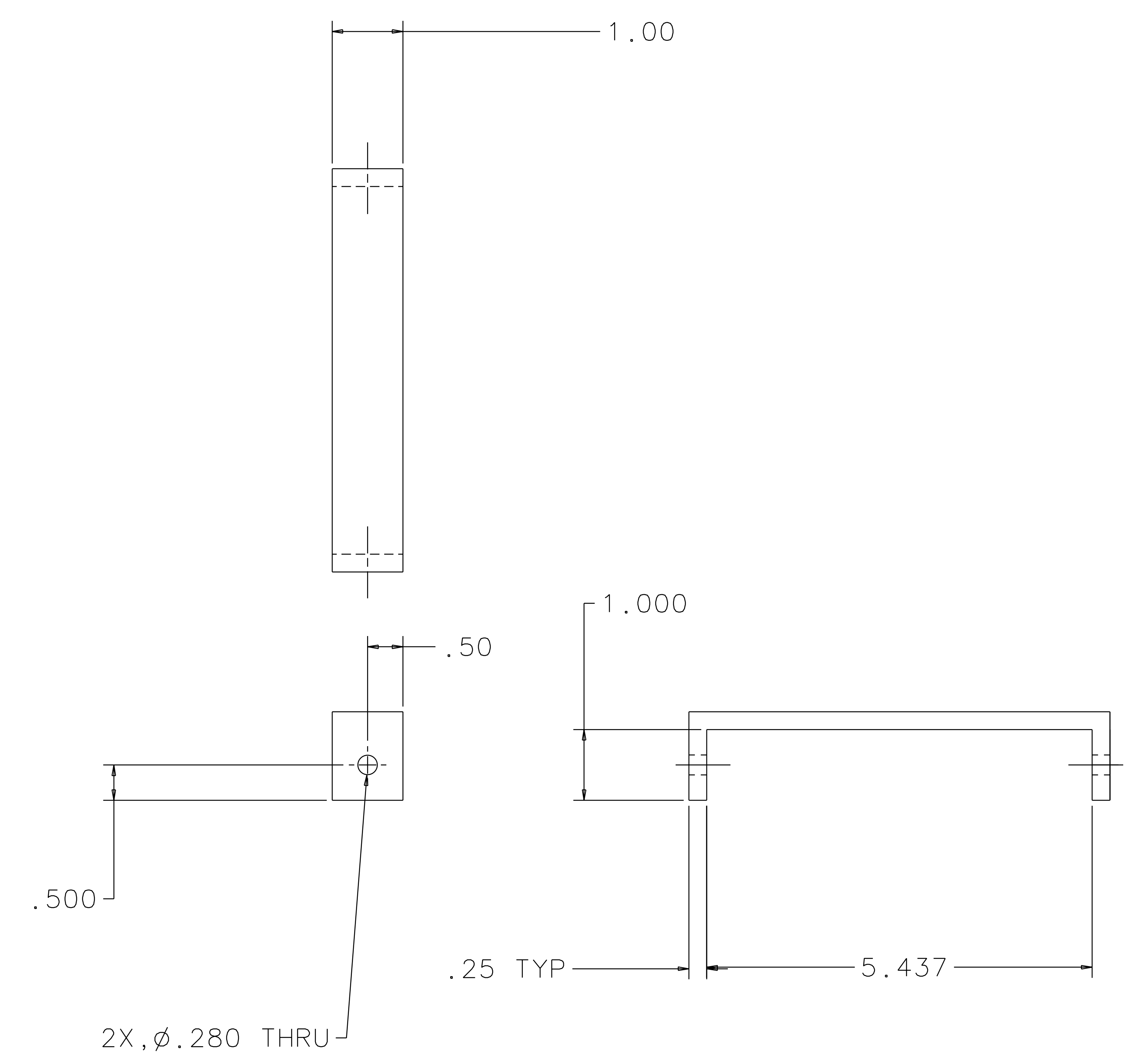
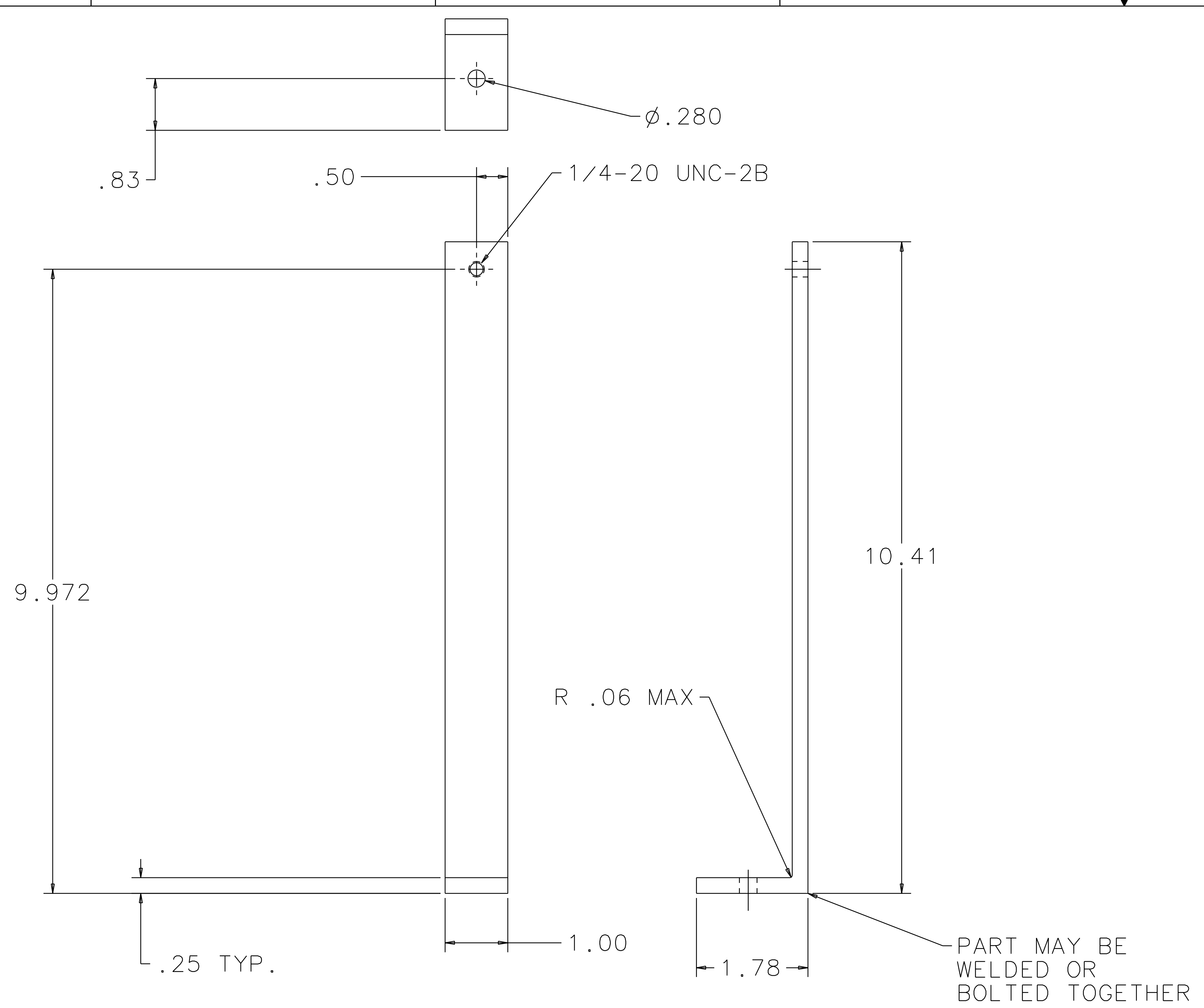


CRADLE DETAIL

1 2 3 4 5 6 7 8

QTY REQD	PART OR IDENTIFYING NO	NOMENCLATURE OR DESCRIPTION	MATERIAL SPECIFICATION	ITEM NO.
UNLESS OTHERWISE SPECIFIED DIMENSIONS ARE IN INCHES				
TOLERANCES ARE:				
FRACTIONS DECIMALS ANGLES				
0, XX=±0.01				
0, XXX=±0.005				
ANGLES=±0.5°				
DO NOT SCALE DRAWING				
APPROVALS		DATE	LIGO CALIFORNIA INSTITUTE OF TECHNOLOGY MASSACHUSETTS INSTITUTE OF TECHNOLOGY	
DRAWN			TITLE WIRE AND OPTICS FIXTURE ASSEMBLY	
CHECKED			SIZE E D960753	
MATERIAL			SCALE 1/1	
NEXT ASSEMBLY			SHEET 2 OF 3	
FILE LOCATION /home/gcc/docs/D960753.pdf		FINISH		

REV	DATE	DRAWN BY	CHECKED	DCC	DCN/DESCRIPTION
A	2/13/98	J. Hazel			E980016/INITIAL RELEASE
B	2/27/98	J. Hazel			E980056/ADD NOTE SH3, ZONE E4
C	7/14/99	J. Romie			E990259/TEFLON TO PFA 440HP



QTY REQD	PART OR IDENTIFYING NO.	NOMENCLATURE OR DESCRIPTION	MATERIAL SPECIFICATION	ITEM NO.
UNLESS OTHERWISE SPECIFIED DIMENSIONS ARE IN INCHES				
TOLERANCES ARE: FRACTIONS DECIMALS ANGLES				
DRAWN 0. XX = ±0.01				
CHECKED 0. XXX = ±0.005				
ANGLES = ±0.5°				
DO NOT SCALE DRAWING				
APPROVALS		DATE	LIGO CALIFORNIA INSTITUTE OF TECHNOLOGY MASSACHUSETTS INSTITUTE OF TECHNOLOGY	
DRAWN			TITLE WIRE AND OPTICS FIXTURE ASSEMBLY	
CHECKED			SIZE E D960753	
MATERIAL			SCALE 1/1	
FINISH			SHEET 3 OF 3	
NEXT ASSEMBLY				
FILE LOCATION /home/dcc/docs/D960753.pdf				