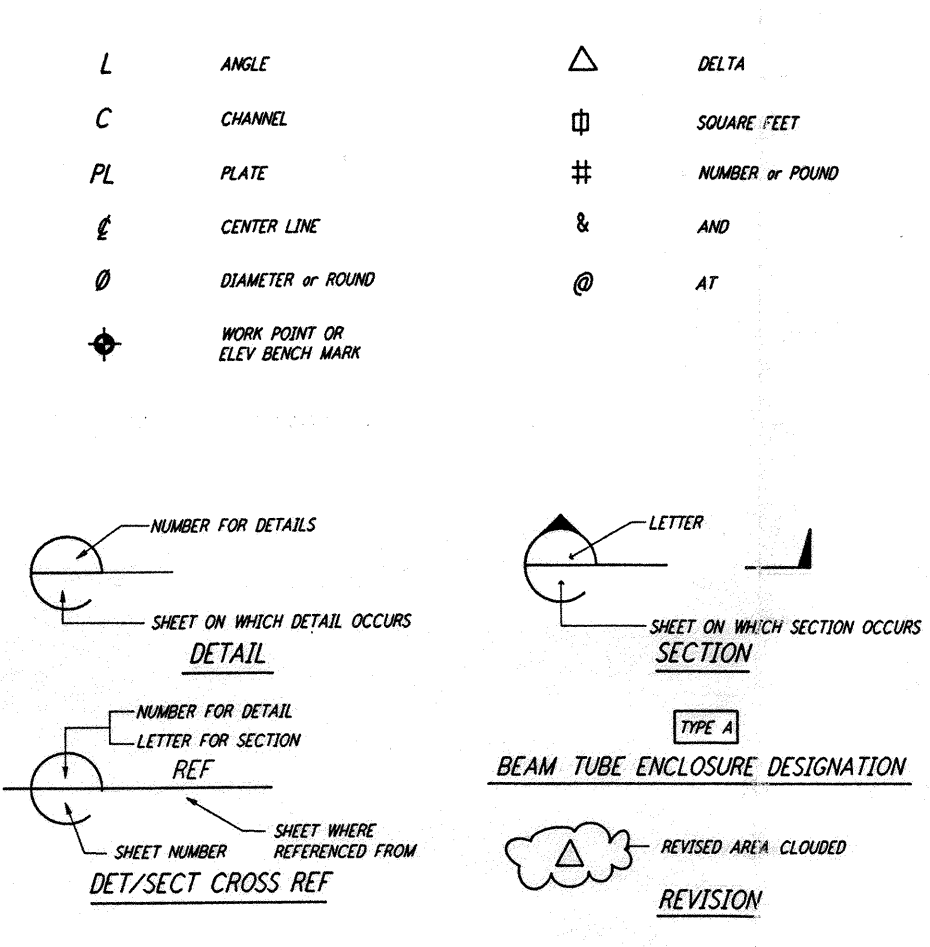


### ABBREVIATIONS

AB	ANCHOR BOLT	MAX	MAXIMUM
ACI	AMERICAN CONCRETE INSTITUTE	MB	MACHINE BOLT
AISC	AMERICAN INSTITUTE OF STEEL CONSTRUCTION	MECH	MECHANICAL
APPROX	APPROXIMATE	MEZZ	MEZZANINE
ARCH	ARCHITECTURAL	MFR	MANUFACTURER
ASTM	AMERICAN SOCIETY FOR TESTING AND MATERIALS	MIN	MINIMUM
AWS	AMERICAN WELDING SOCIETY	MISC	MISCELLANEOUS
B/B	BACK TO BACK	MPH	MILES PER HOUR
B/P	BASE PLATE	NIC	NOT IN CONTRACT
BM	BEAM	NS	NEAR SIDE
BOF	BOTTOM OF FOOTING	NTS	NOT TO SCALE
BOS	BOTTOM OF STEEL	OC	ON CENTER
BRGC	BRACING	OD	OUTSIDE DIAMETER
BTE	BEAM TUBE ENCLOSURE	OH	OPPOSITE HAND
C	CAMBER	OPNG	OPENING
CC OR C/C	CENTER TO CENTER	OPP	OPPOSITE
CG	CENTER OF GRAVITY	OTO	OUT TO OUT
CJ	CONSTRUCTION JOINT	PCF	POUNDS PER CUBIC FOOT
CLG	CEILING	PL	PLATE
CLR	CLEAR	PSF	POUNDS PER SQUARE FOOT
CMU	CONCRETE MASONRY UNIT	PSI	POUNDS PER SQUARE INCH
COL	COLUMN	PT	POINT
CONC	CONCRETE	R	RADIUS
CONT	CONTINUOUS	RD	ROOF DRAIN
CU	CUBIC	REF	REFERENCE
DET	DETAIL	REF OR BARS	REINFORCING STEEL
DIAG	DIAGONAL	REQD	REQUIRED
DIM	DIMENSION	REV	REVISE OR REVISION
DL	DEAD LOAD	SCHED	SCHEDULE
DTD	DITTO	SECT	SECTION
DWG	DRAWING	SHT	SHEET
DWL	DOWEL	SIM	SIMILAR
EA	EACH	SLV	SHORT LEG VERTICAL
EF	EACH FACE	SPA	SPACED
EL	ELEVATION	ST STL	STAINLESS STEEL
ENCL	ENCLOSURE	STD	STANDARD
ENGR	ENGINEER	STIF	STIFFENER
EQ	EQUAL	SYM	SYMMETRICAL
EQUIP	EQUIPMENT	T&B	TOP AND BOTTOM
ETC	ETCETERA	THK	THICKNESS
EW	EACH WAY	TOC	TOP OF CONCRETE
EXIST	EXISTING	TOP	TOP OF FOOTING
FD	FLOOR DRAIN	TOS	TOP OF STEEL
FDN	FOUNDATION	TOW	TOP OF WALL
FIN	FINISH	TYP	TYPICAL
FLR	FLOOR	UNON	UNLESS OTHERWISE NOTED
FLSH	FLASHING	VE	VACUUM EQUIPMENT
FOC	FACE OF CONCRETE	VERT	VERTICAL
FRMG	FRAMING	W/	WITH
FS	FAR SIDE	WP	WATER PROOF
FT	FOOT, FEET	WP	WORKING POINT
FTG	FOOTING	WS	WELDED STUD
GA	GAUGE	WT	WEIGHT
GALV	GALVANIZED	WVF	WELDED WIRE FABRIC
GR	GRADE	WWM	WELDED WIRE MESH
HORIZ	HORIZONTAL		
HP	HIGH POINT		
HR	HANDRAIL		
HSS	HIGH STRENGTH BOLT		
ID	INSIDE DIAMETER		
IN	INCH		
INFO	INFORMATION		
INSUL	INSULATION		
JST	JOIST		
JT	JOINT		
LB	POUND		
LG	LENGTH		
LL	LIVE LOAD		
LLH	LONG LEG HORIZONTAL		
LLV	LONG LEG VERTICAL		
LWC	LIGHT WEIGHT CONCRETE		

### SYMBOLS



### GENERAL NOTES

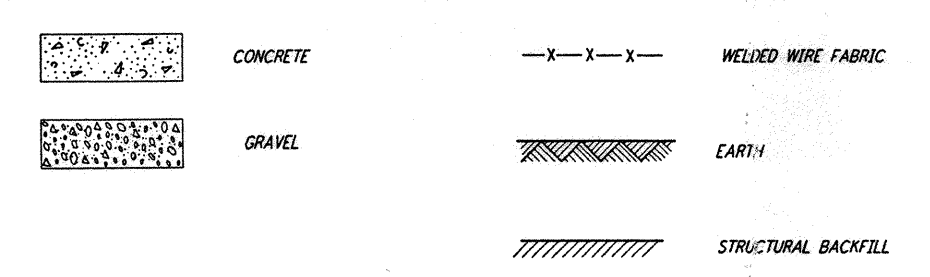
- GENERAL**
- ALL WORKMANSHIP AND MATERIALS SHALL CONFORM TO THE PROJECT SPECIFICATIONS.
  - THE CONTRACTOR SHALL VERIFY ALL DIMENSIONS AND CONDITIONS AFFECTING THE WORK AND SHALL NOTIFY THE CONSTRUCTION MANAGER OF ANY DISCREPANCY WITH THE INFORMATION SHOWN ON THE DRAWINGS PRIOR TO PROCEEDING WITH THE WORK.
  - FOR TOP OF CONCRETE SLAB FOR BEAM TUBE ENCLOSURE SEE CIVIL DRAWINGS.
  - INSTALLATION AND SEALING OF BEAM TUBE ENCLOSURE SEGMENTS ARE INCLUDED IN THIS CONTRACT.
  - INSTALLATION OF DOORS ARE INCLUDED IN THIS CONTRACT.

- STRUCTURAL AND MISC METAL WORKS**
- STRUCTURAL AND MISCELLANEOUS STEEL SHALL CONFORM TO ASTM A36.
  - ALL WELDING AND ELECTRODES SHALL CONFORM TO THE REQUIREMENTS OF AWS D1.1 STRUCTURAL WELDING CODE.
  - FIELD WELDING SHALL BE PERFORMED BY CERTIFIED WELDERS AND CONTRACTOR SHALL NOTIFY THE CONSTRUCTION MANAGER PRIOR TO WELDING.

### DRAWING INDEX

BT-S-101	GENERAL NOTES, ABBREVIATIONS & LEGEND
BT-S-102	KEY PLAN OF BEAM TUBE ENCLOSURE & PARTIAL ENLARGED PLAN
BT-S-102A	KEY PLAN OF BEAM TUBE ENCLOSURE & PARTIAL ENLARGED PLAN
BT-S-103	BEAM TUBE ENCLOSURE PLANS, SECTIONS & DETAILS

### MATERIALS LEGEND



NO.	DATE	BY	CHKD	ENGR	PROJ	DESCRIPTION
A	5-10-96	MCS	AM	PL	ISSUED FOR BID	

DRAWN	MCS
CHECKED	
ENGINEER	
PROJ	

**PARSONS**  
 100 WEST WALNUT STREET  
 PASADENA, CALIFORNIA

**LIGO**  
 CALIFORNIA INSTITUTE OF TECHNOLOGY  
 MASSACHUSETTS INSTITUTE OF TECHNOLOGY

LASER INTERFEROMETER  
 GRAVITATIONAL-WAVE OBSERVATORY  
 BTE INSTALLATION - HANFORD, WA

TITLE	SCALE	CONTRACT NUMBER	PROJECT NUMBER
STRUCTURAL GENERAL NOTES, ABBREVIATIONS & LEGEND	NONE	PP150969	8094
SHEET NUMBER	BT-S-101		REVISION

This document and the design it covers are the property of PARSONS. They are loaned only with the borrower's expressed written agreement that they will not be reproduced, copied, loaned, exhibited, or used in any other way, except by written consent from PARSONS to the borrower.

I:\LIGO\SITE\BTE\BT-S-101.DWG

I:\LIGO\SITE\BTE\BT-S-101.DWG