

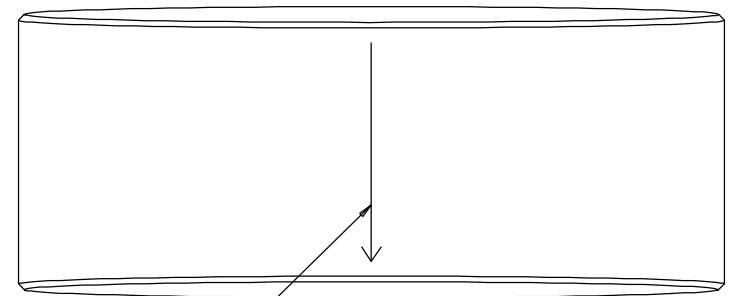
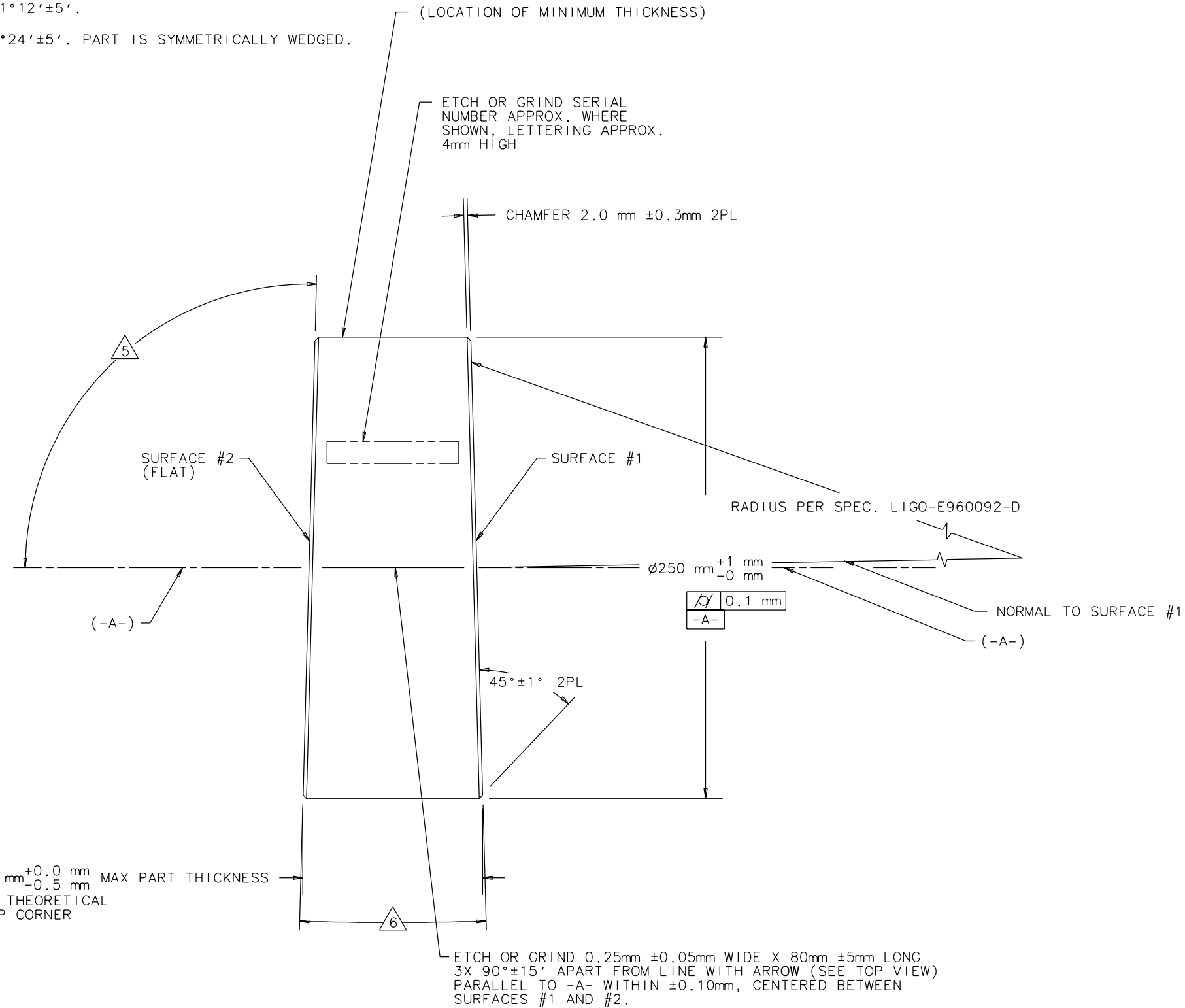
NOTES: (UNLESS OTHERWISE SPECIFIED)

1. ALL DIMENSIONS ARE IN MILLIMETERS AND DEGREES-MINUTES.
2. DRAWING TO BE INTERPRETED PER ANSI Y14.5M-1982.
3. POLISH ALL FACES, EDGES AND CHAMFERS PER SPECIFICATION LIGO-E960092-D.
4. REGISTRATION MARK IS LOCATED COINCIDENT WITH THE REGISTRATION MARK DRAWN ON THE BLANK $\pm 5\text{mm}$.
5. $91^\circ 12' \pm 5'$.
6. $2^\circ 24' \pm 5'$. PART IS SYMMETRICALLY WEDGED.

REV	DATE	DRAWN BY	CHECKED	DCC	DCN/DESCRIPTION
A	9-8-96	C. CONLEY	D. COYNE	L. TURNER	E960113/INITIAL RELEASE
B	8-11-97	C. CONLEY			E970126-00-D

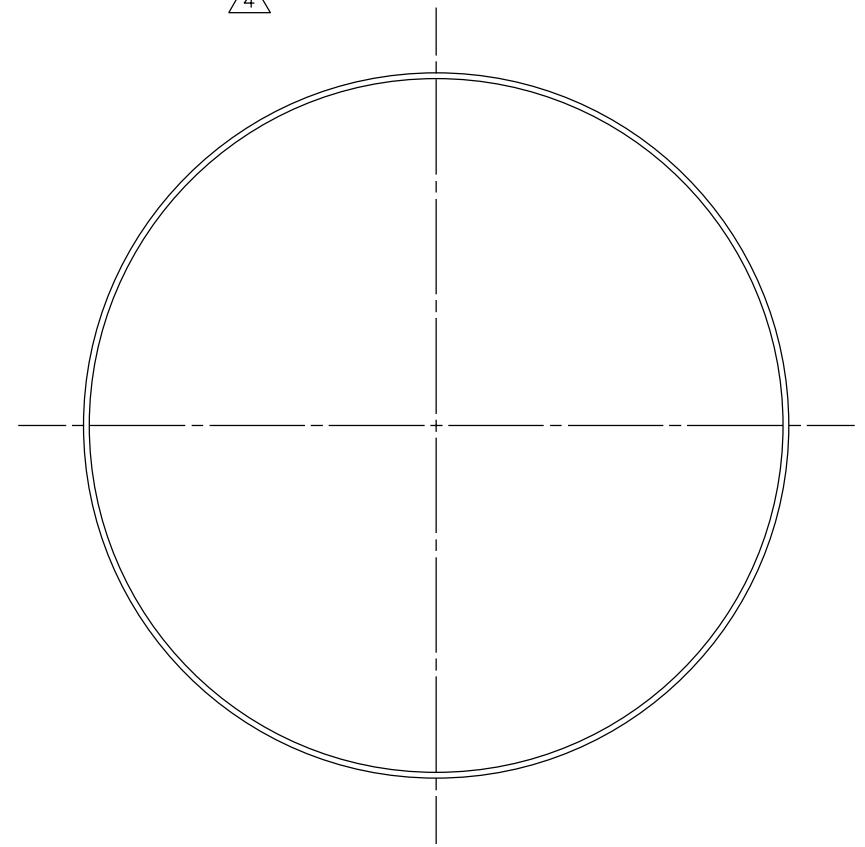
D
C
B
A

D
C
B
A



ETCH OR GRIND 0.25mm $\pm 0.05\text{mm}$ WIDE X 80mm $\pm 5\text{mm}$ LONG LINE WITH ARROW POINTING TOWARD SURFACE #1, PARALLEL TO -A- WITHIN $\pm 0.10\text{mm}$, CENTERED BETWEEN SURFACES #1 AND #2, AND AT LOCATION OF MINIMUM PART THICKNESS $\pm 0^\circ 30'$.

4



DRWN	DATE	CALIFORNIA INSTITUTE OF TECHNOLOGY	LIGO PROJECT
C CONLEY	9-8-96	MASSACHUSETTS INSTITUTE OF TECHNOLOGY	
CHKD		CAD FILE: D960785_B.osc	
ENGR		dcc file: /home/dcc/docs/D960785-B.pdf	
APPD			
MATERIAL: FUSED SILICA PER LIGO-E960096-D		RECYCLING MIRROR SUBSTRATE	
SCALE: NTS	SIZE	DRAWING NUMBER	SHEET
	B	D960785-B-D	1 OF 1

DO NOT SCALE DRAWING

6 5 4 3 2 1