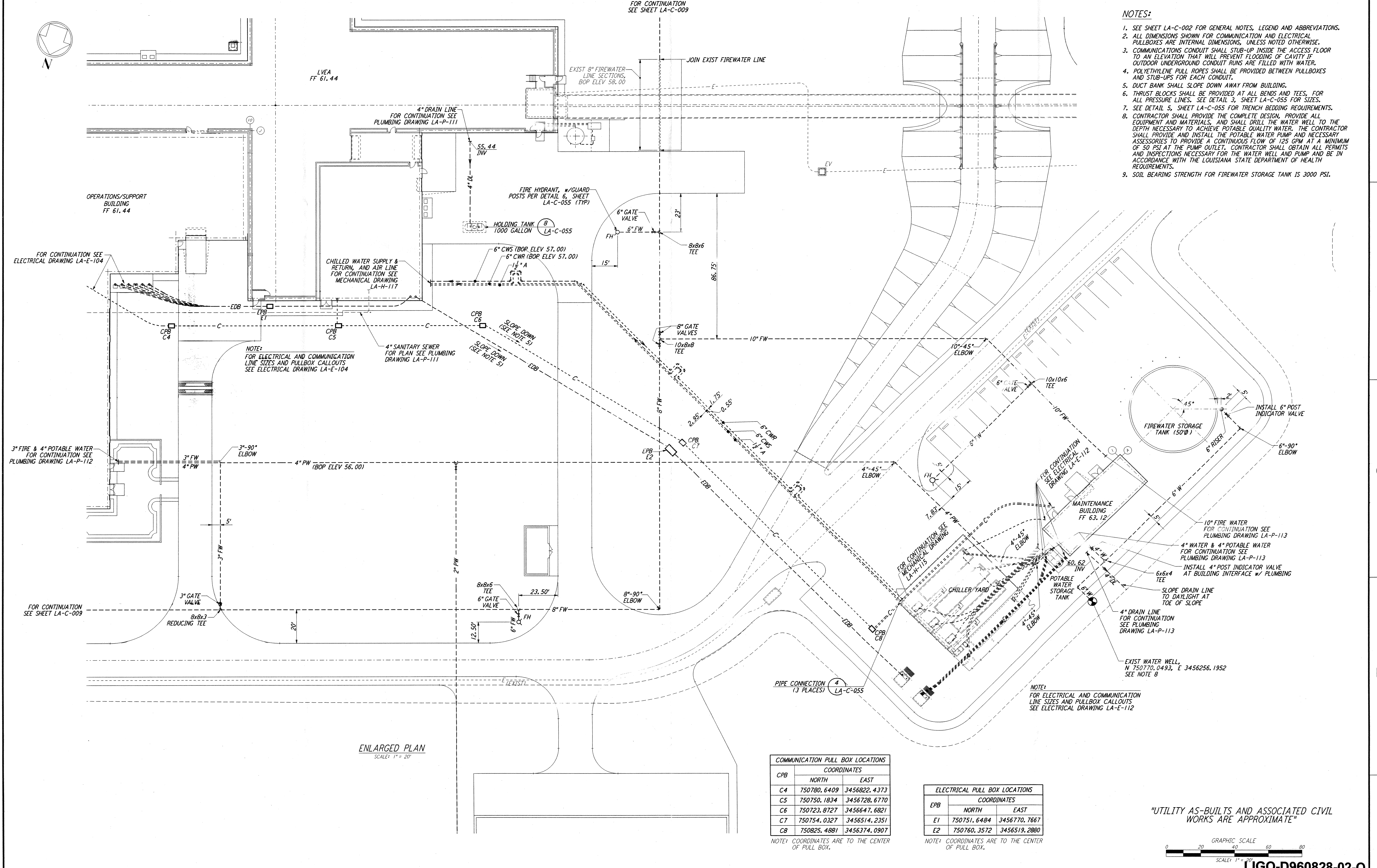


This document and the design it covers are the property of PARSONS. They are loaned only with the borrower's expressed written agreement that they will not be reproduced, copied, loaned, exhibited, or used in any other way, except by written consent from PARSONS to the borrower.



- NOTES:**
- SEE SHEET LA-C-002 FOR GENERAL NOTES, LEGEND AND ABBREVIATIONS.
  - ALL DIMENSIONS SHOWN FOR COMMUNICATION AND ELECTRICAL PULLBOXES ARE INTERNAL DIMENSIONS, UNLESS NOTED OTHERWISE.
  - COMMUNICATIONS CONDUIT SHALL STUB-UP INSIDE THE ACCESS FLOOR TO AN ELEVATION THAT WILL PREVENT FLOODING OF CAVITY IF OUTDOOR UNDERGROUND CONDUIT RUNS ARE FILLED WITH WATER.
  - POLYETHYLENE PULL ROPES SHALL BE PROVIDED BETWEEN PULLBOXES AND STUB-UPS FOR EACH CONDUIT.
  - DUCT BANK SHALL SLOPE DOWN AWAY FROM BUILDING.
  - THRUST BLOCKS SHALL BE PROVIDED AT ALL BENDS AND TEES, FOR ALL PRESSURE LINES. SEE DETAIL 3, SHEET LA-C-055 FOR SIZES.
  - SEE DETAIL 5, SHEET LA-C-055 FOR TRENCH BEDDING REQUIREMENTS.
  - CONTRACTOR SHALL PROVIDE THE COMPLETE DESIGN, PROVIDE ALL EQUIPMENT AND MATERIALS, AND SHALL DRILL THE WATER WELL TO THE DEPTH NECESSARY TO ACHIEVE POTABLE QUALITY WATER. THE CONTRACTOR SHALL PROVIDE AND INSTALL THE POTABLE WATER PUMP AND NECESSARY ACCESSORIES TO PROVIDE A CONTINUOUS FLOW OF 125 GPM AT A MINIMUM OF 50 PSI AT THE PUMP OUTLET. CONTRACTOR SHALL OBTAIN ALL PERMITS AND INSPECTIONS NECESSARY FOR THE WATER WELL AND PUMP AND BE IN ACCORDANCE WITH THE LOUISIANA STATE DEPARTMENT OF HEALTH REQUIREMENTS.
  - SOIL BEARING STRENGTH FOR FIREWATER STORAGE TANK IS 3000 PSF.

**ENLARGED PLAN**  
 SCALE: 1" = 20'

**COMMUNICATION PULL BOX LOCATIONS**

CPB	COORDINATES	
	NORTH	EAST
C4	750780.6409	3456822.4373
C5	750750.1834	3456728.6770
C6	750723.8727	3456647.6821
C7	750754.0327	3456514.2351
C8	750825.4881	3456374.0907

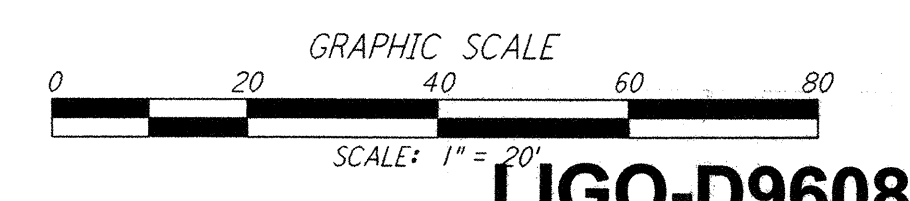
NOTE: COORDINATES ARE TO THE CENTER OF PULL BOX.

**ELECTRICAL PULL BOX LOCATIONS**

EPB	COORDINATES	
	NORTH	EAST
E1	750751.6484	3456770.7667
E2	750760.3572	3456519.2880

NOTE: COORDINATES ARE TO THE CENTER OF PULL BOX.

"UTILITY AS-BUILTS AND ASSOCIATED CIVIL WORKS ARE APPROXIMATE"



**LIGO-D960828-02-0**

NO.	DATE	BY	CHKD	ENGR	PROJ	DESCRIPTION
2	08-07-98	WRB	ML	JB	TDM	ISSUED FOR AS-BUILT
1	2-28-97	WRB	ML	JB	TDM	MOVED XFMR'S/ENLARGED PAD

ISSUED FOR CONSTRUCTION  
 DRAWN WRB 11-15-96  
 CHECKED ML 11-15-96  
 ENGINEER JB 11-15-96  
 PROJ TDM 11-15-96

**AS-BUILT DRAWINGS**

**PARSONS**  
 100 WEST WALNUT STREET  
 PASADENA, CALIFORNIA

**LIGO**  
 CALIFORNIA INSTITUTE OF TECHNOLOGY  
 MASSACHUSETTS INSTITUTE OF TECHNOLOGY

LASER INTERFEROMETER  
 GRAVITATIONAL-WAVE OBSERVATORY  
 SITE NO.2 - LIVINGSTON, LOUISIANA

CIVIL CORNER STATION  
 UTILITY PLAN  
 ENLARGED PLAN

AS NOTED PPI50969 8094  
**LA-C-010**