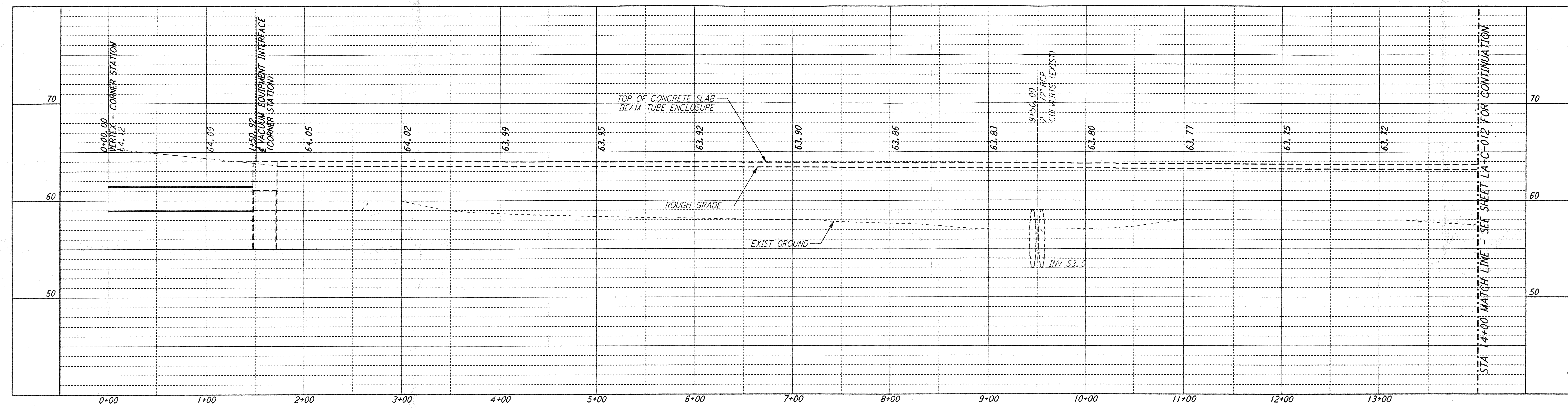
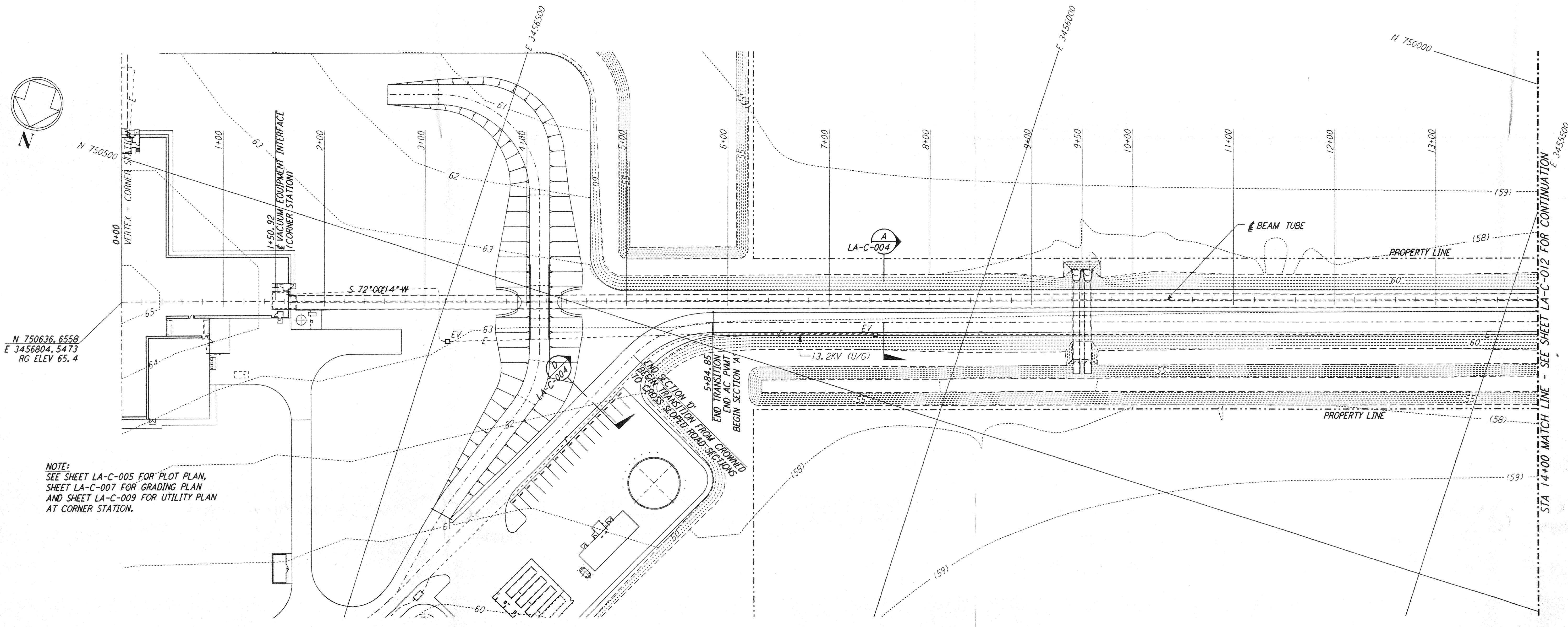


This document and the design it covers are the property of PARSONS. They are loaned only with the borrower's expressed written agreement that they will not be reproduced, copied, loaned, exhibited, or used in any other way, except by written consent from PARSONS to the borrower.



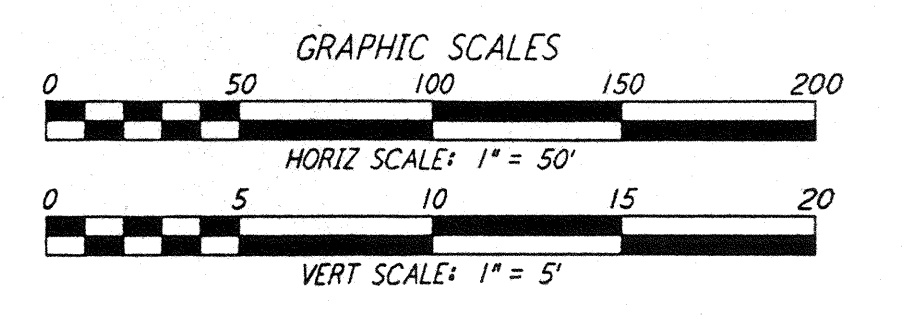
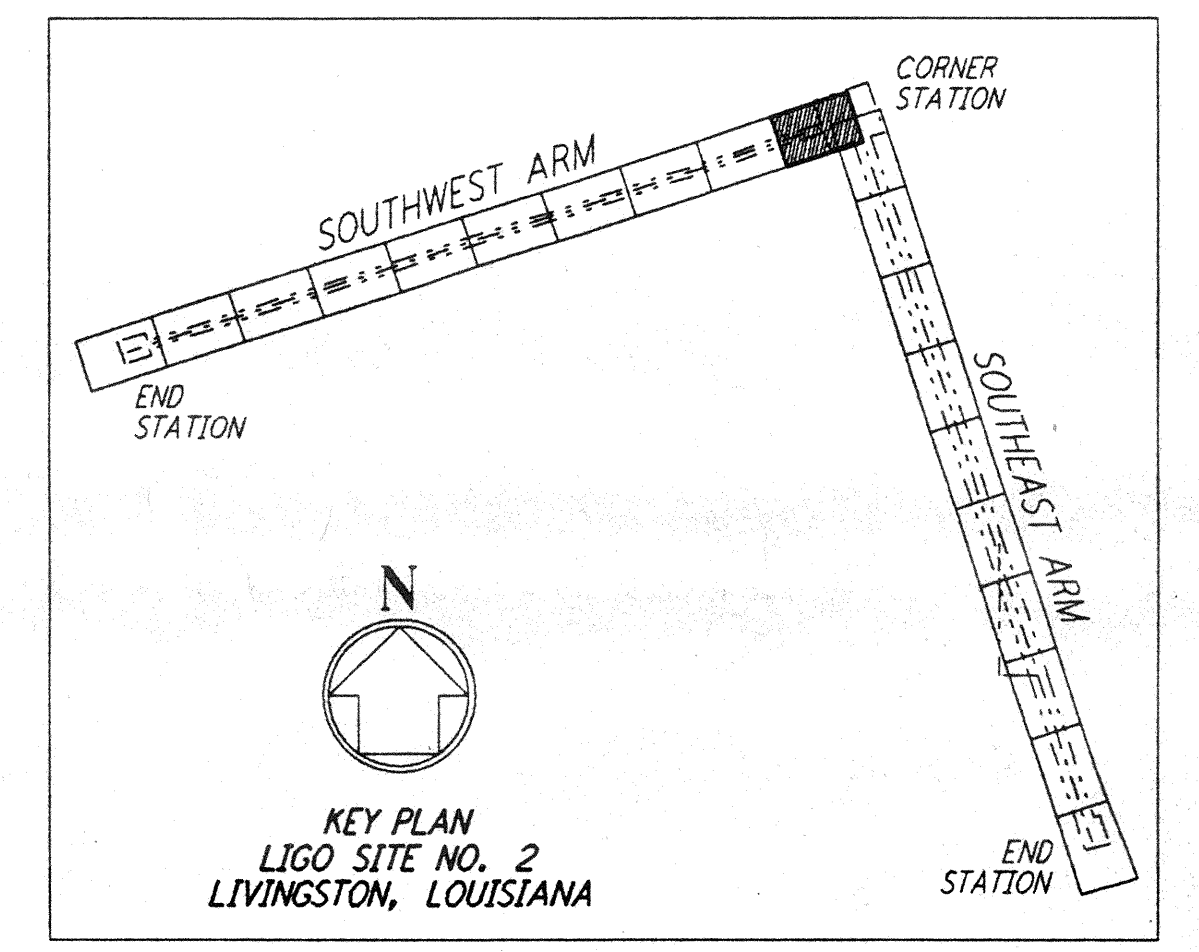
PROFILE
 SCALES: HORIZ: 1" = 50'
 VERT: 1" = 5'



PLAN
 SCALE: 1" = 50'

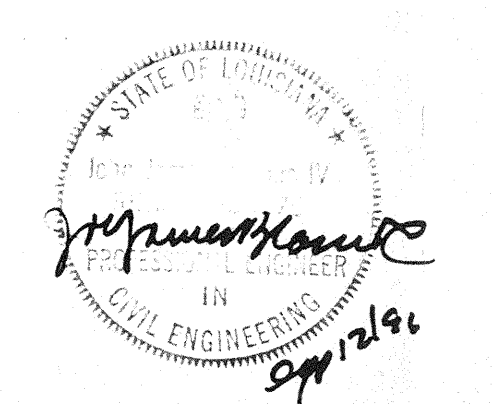
- NOTES:**
- SEE SHEET LA-C-002 FOR GENERAL NOTES, LEGEND AND ABBREVIATIONS.
 - SEE SHEET LA-C-004 FOR TYPICAL SECTIONS AND DETAILS.

NOTE:
 SEE SHEET LA-C-005 FOR PLOT PLAN,
 SHEET LA-C-007 FOR GRADING PLAN
 AND SHEET LA-C-009 FOR UTILITY PLAN
 AT CORNER STATION.



NO.	DATE	BY	CHKD	ENGR	PROJ	DESCRIPTION

ISSUED FOR CONSTRUCTION	
DRAWN	WRB 11-15-96
CHECKED	WLC 11-15-96
ENGINEER	WLS 11-15-96
PROJ	SPR 11/15/96



PARSONS
 100 WEST WALNUT STREET
 PASADENA, CALIFORNIA

LIGO
 CALIFORNIA INSTITUTE OF TECHNOLOGY
 MASSACHUSETTS INSTITUTE OF TECHNOLOGY

LASER INTERFEROMETER
 GRAVITATIONAL-WAVE OBSERVATORY
 SITE NO. 2 - LIVINGSTON, LOUISIANA

TITLE: CIVIL SOUTHWEST ARM PLAN AND PROFILE STA 0+00 TO STA 14+00

SCALE: AS NOTED CONTRACT NUMBER: PP150969 PROJECT NUMBER: 8094

SHEET NUMBER: **LA-C-011**