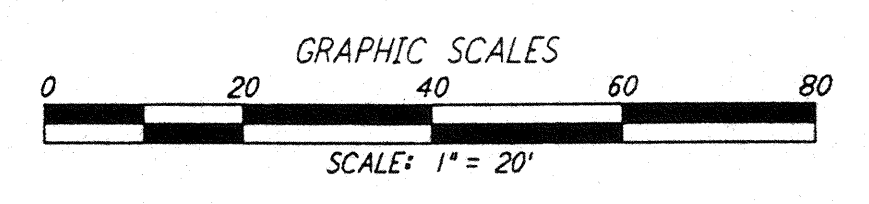
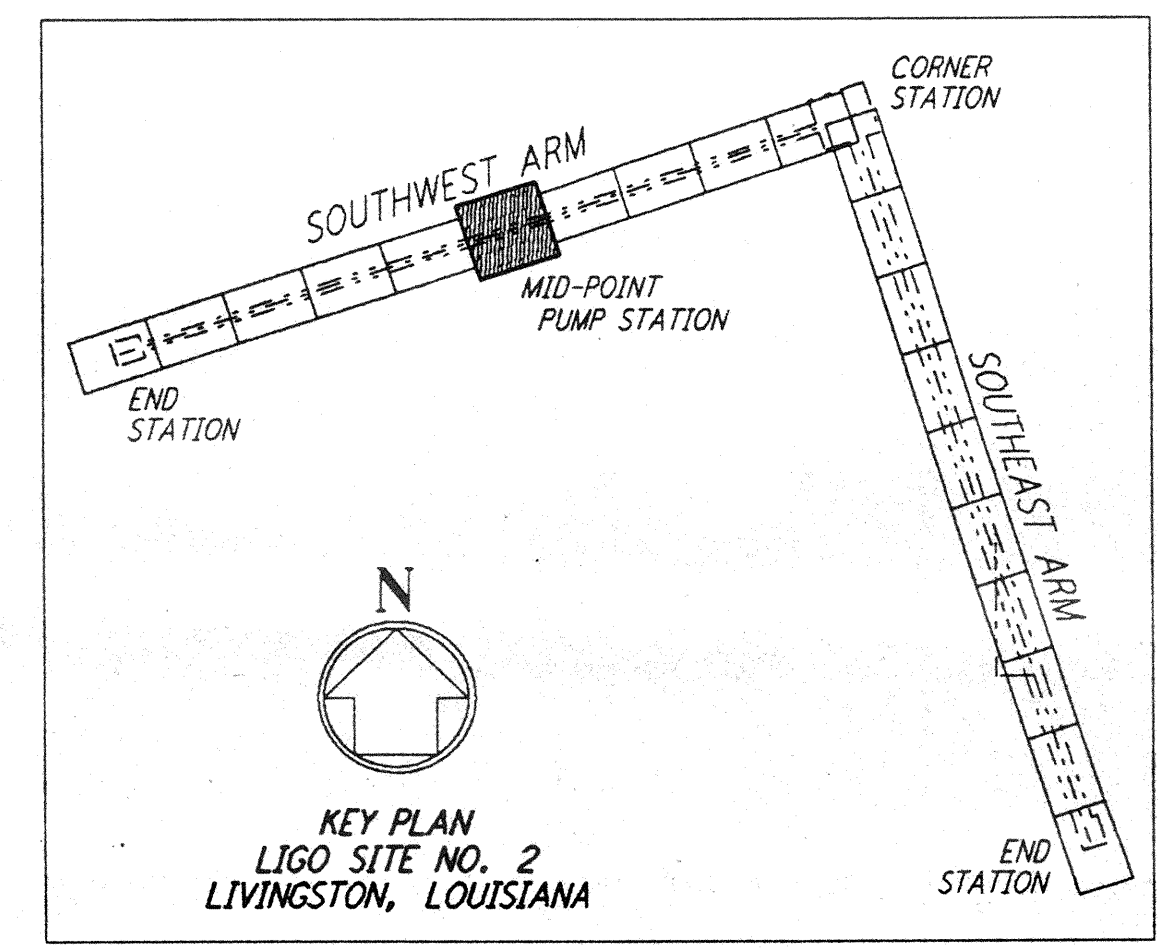
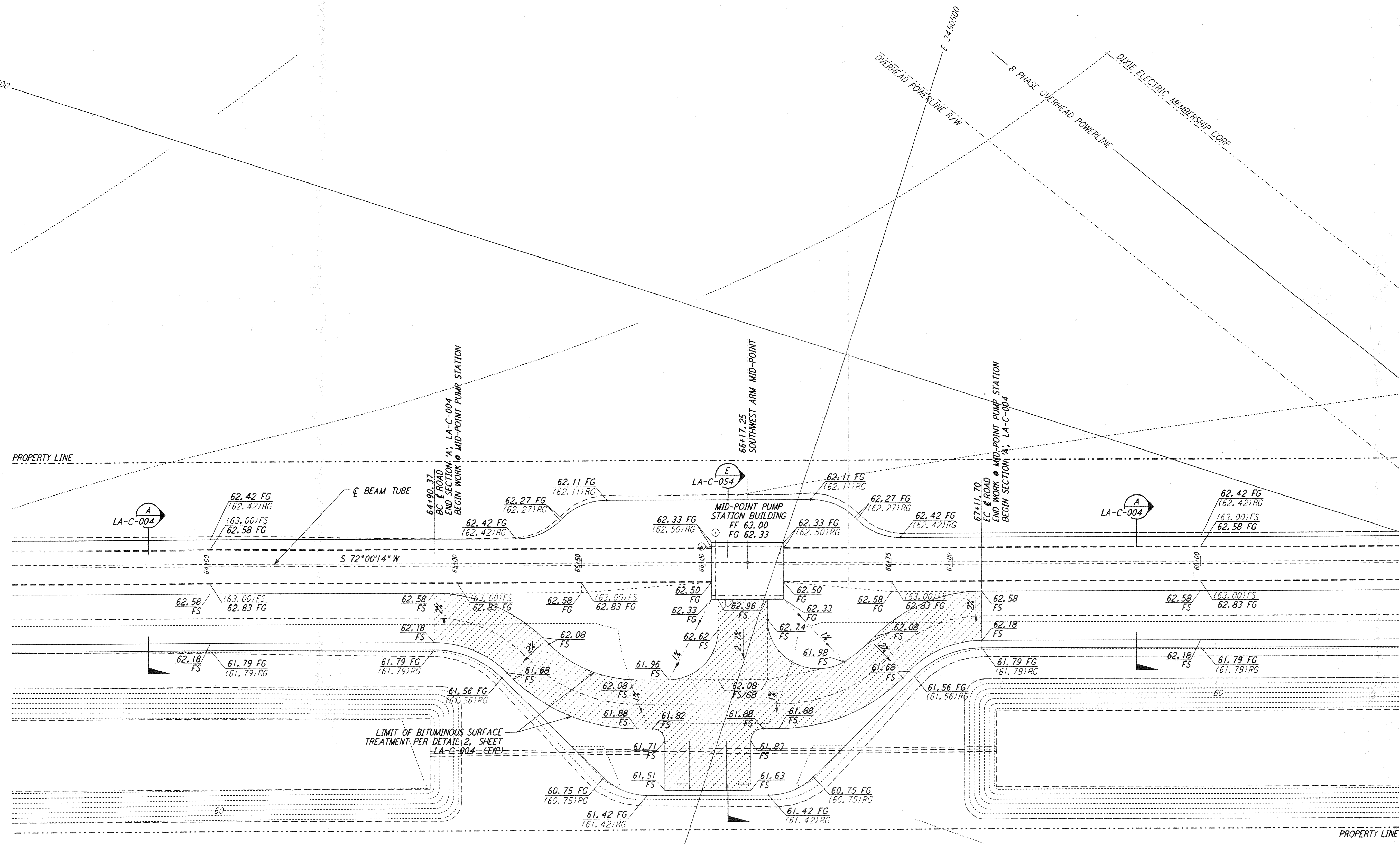


**NOTES:**  
 1. SEE SHEET LA-C-002 FOR GENERAL NOTES, LEGEND AND ABBREVIATIONS.

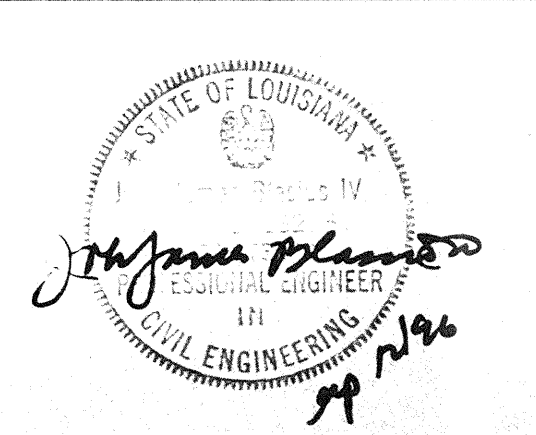


not be reproduced, copied, loaned, exhibited, or used in any other way, except by written consent from PARSONS or the borrower.

This document and the design it covers are the property of PARSONS. They are loaned only with the borrower's expressed written agreement that they will

DRAWING NO.	DESCRIPTION	NO.	DATE	BY	CHKD	ENGR	PROJ	DESCRIPTION

ISSUED FOR CONSTRUCTION  
 DRAWN WRB 11-15-96  
 CHECKED JML 11-15-96  
 ENGINEER JWB 11/15/96  
 PROJ SLOPP 11/15/96



**PARSONS**  
 100 WEST WALNUT STREET  
 PASADENA, CALIFORNIA

**LIGO**  
 CALIFORNIA INSTITUTE OF TECHNOLOGY  
 MASSACHUSETTS INSTITUTE OF TECHNOLOGY

LASER INTERFEROMETER  
 GRAVITATIONAL-WAVE OBSERVATORY  
 SITE NO. 2 - LIVINGSTON, LOUISIANA

TITLE	CIVIL SOUTHWEST ARM PUMP STATION GRADING PLAN	SCALE	1" = 20'	CONTRACT NUMBER	PP150969	PROJECT NUMBER	8094
SHEET NUMBER	<b>LA-C-022</b>	REVISIONS					