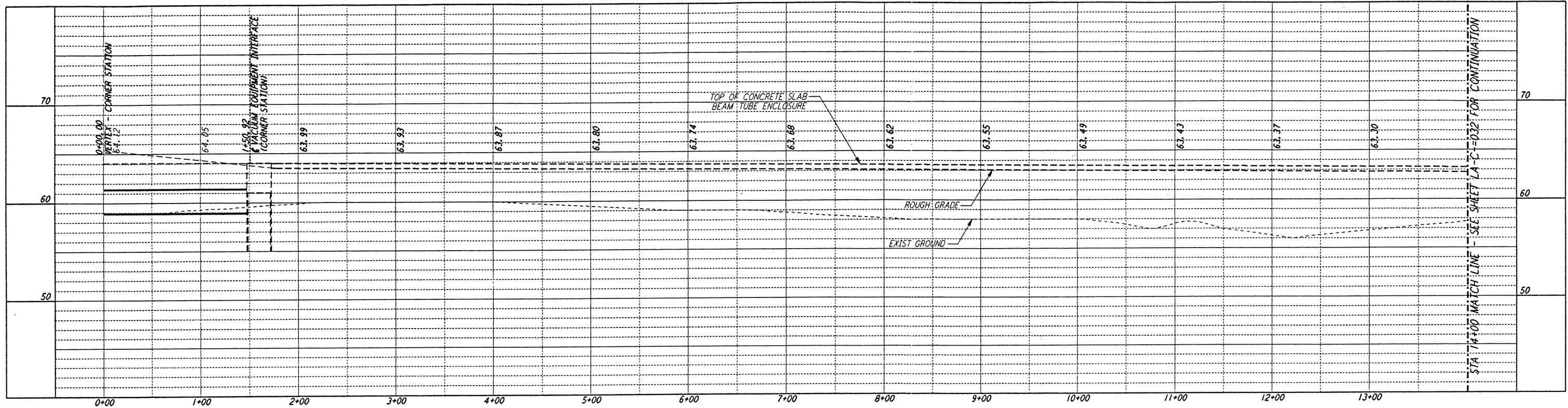
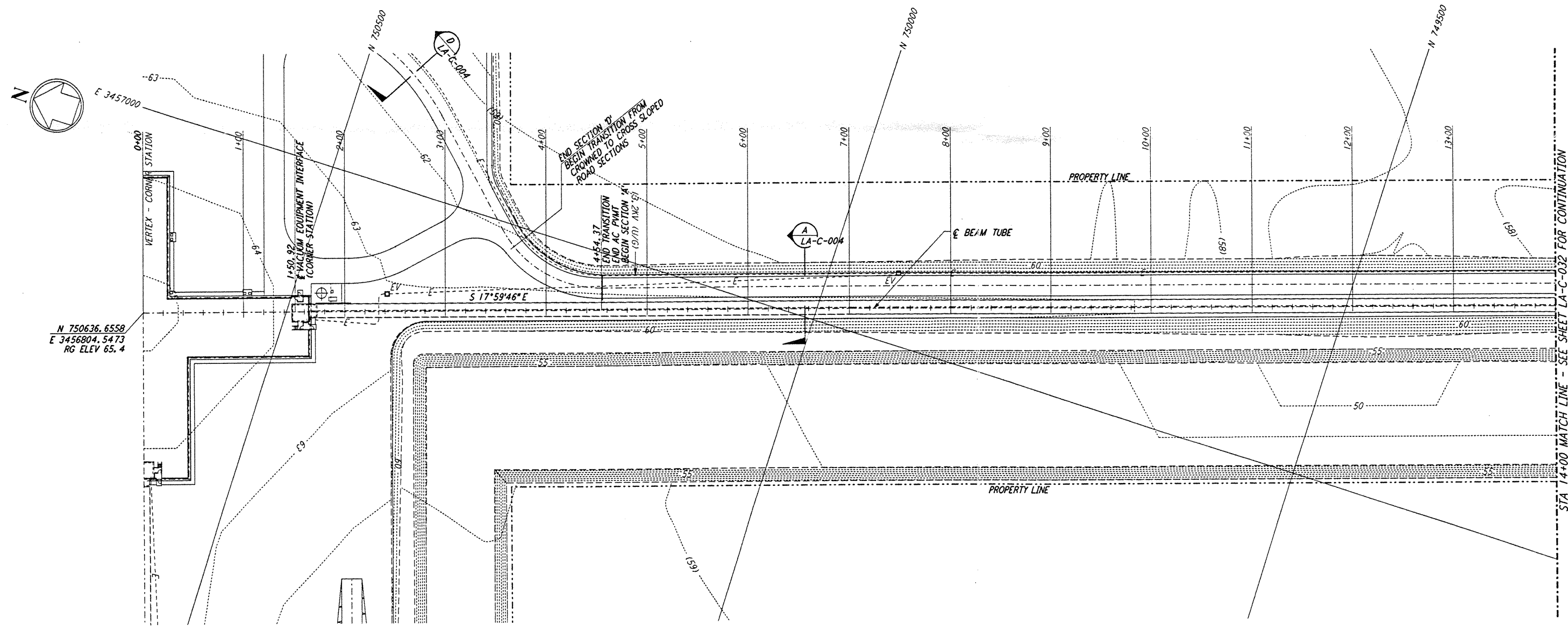


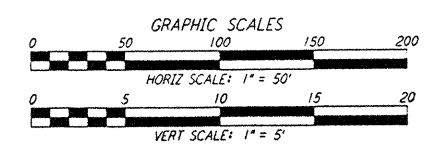
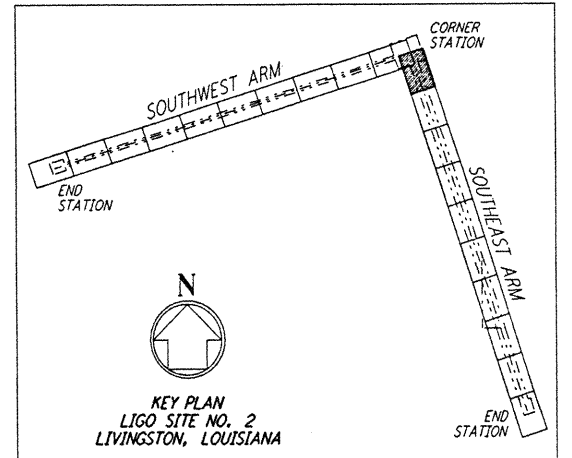
- NOTES:**
1. SEE SHEET LA-C-002 FOR GENERAL NOTES, LEGEND AND ABBREVIATIONS.
  2. SEE SHEET LA-C-004 FOR TYPICAL SECTIONS AND DETAILS.



**PROFILE**  
 SCALES: HORIZ: 1" = 50'  
 VERT: 1" = 5'



**PLAN**  
 SCALE: 1" = 50'

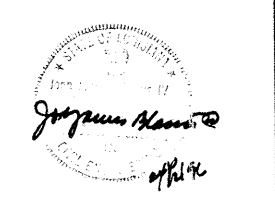


This document and the design it covers are the property of PARSONS. They are loaned only with the borrower's expressed written agreement that they will not be reproduced, copied, loaned, exhibited, or used in any other way, except by written consent from PARSONS to the borrower.

**NOTE:**  
 SEE SHEET LA-C-005 FOR PLOT PLAN,  
 SHEET LA-C-007 FOR GRADING PLAN  
 AND SHEET LA-C-009 FOR UTILITY PLAN  
 AT CORNER STATION.

| DRAWING NO. | DESCRIPTION | NO. | DATE | BY | CHKD | ENGR | PRGJ | DESCRIPTION |
|-------------|-------------|-----|------|----|------|------|------|-------------|
|             |             |     |      |    |      |      |      |             |

|                         |              |
|-------------------------|--------------|
| ISSUED FOR CONSTRUCTION |              |
| DRAWN                   | WRB 11-15-98 |
| CHECKED                 | MLC 12-15-98 |
| ENGINEER                |              |
| PROJ                    |              |



**PARSONS**  
 100 WEST WALNUT STREET  
 PASADENA, CALIFORNIA

**LIGO**  
 CALIFORNIA INSTITUTE OF TECHNOLOGY  
 MASSACHUSETTS INSTITUTE OF TECHNOLOGY

LASER INTERFEROMETER  
 GRAVITATIONAL-WAVE OBSERVATORY  
 SITE NO. 2 - LIVINGSTON, LOUISIANA

|                 |   |
|-----------------|---|
| TITLE           | CIVIL<br>SOUTHWEST ARM<br>PLAN AND PROFILE<br>STA 0+00 TO STA 14+00 |
| SCALE           | AS NOTED  |
| CONTRACT NUMBER | PPI 50969   |
| PROJECT NUMBER  | 8094  |
| SHEET NUMBER    | <b>LA-C-031</b>   |