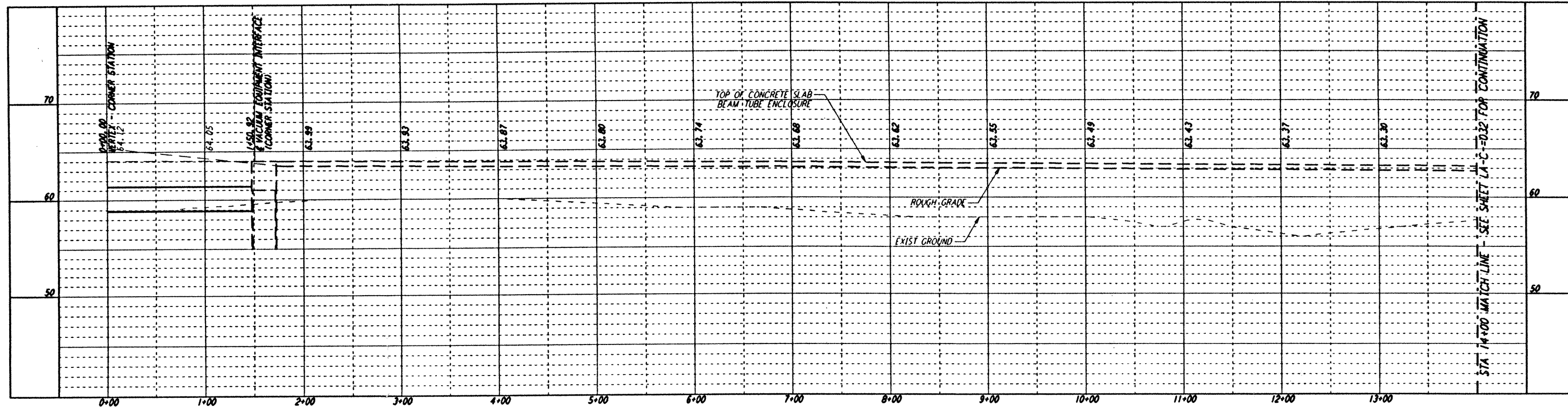
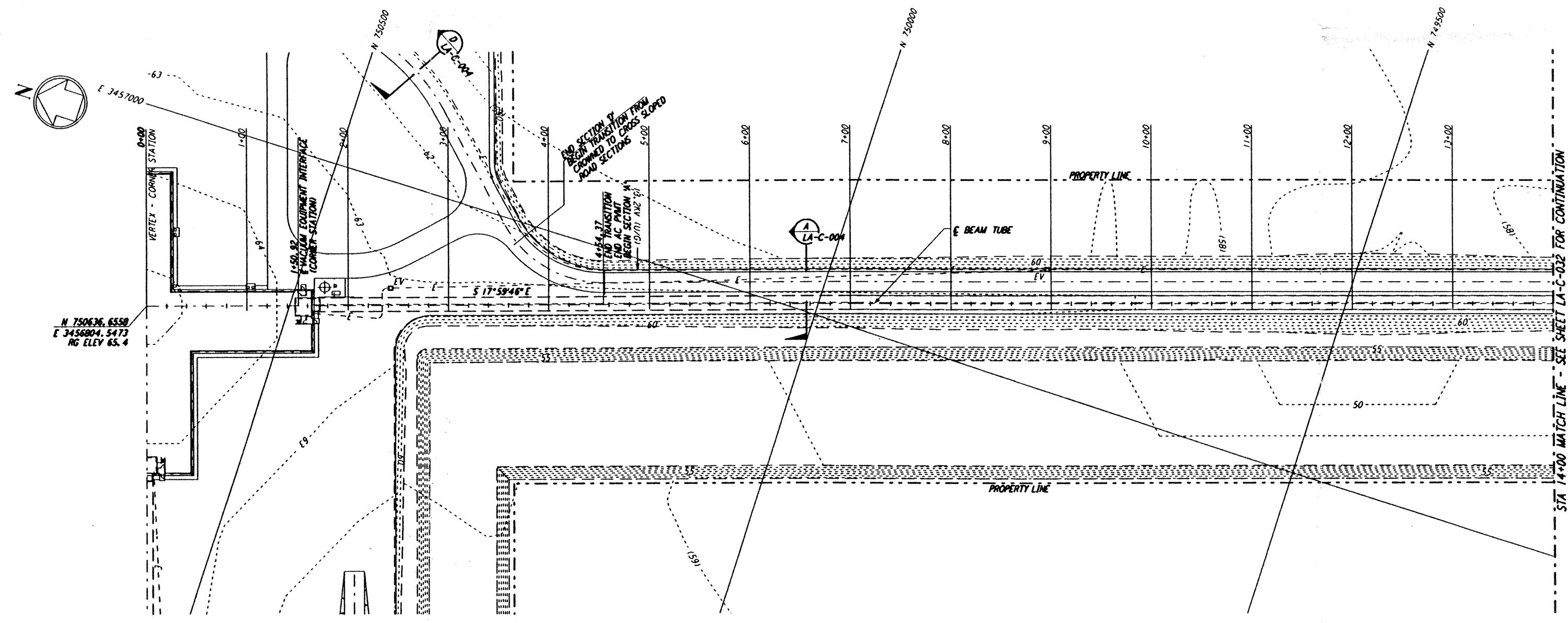


NOTES:

1. SEE SHEET LA-C-002 FOR GENERAL NOTES, LEGEND AND ABBREVIATIONS.
2. SEE SHEET LA-C-004 FOR TYPICAL SECTIONS AND DETAILS.

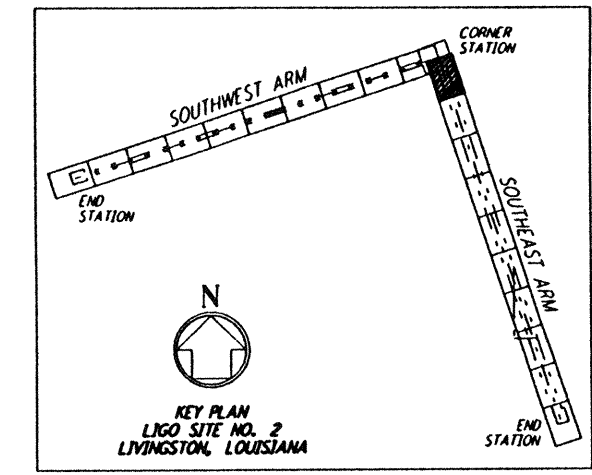


PROFILE
 SCALES: HORIZ: 1" = 50'
 VERT: 1" = 5'

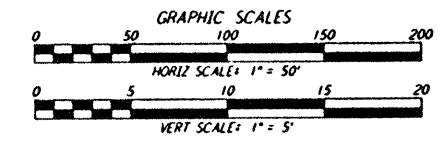


PLAN
 SCALE: 1" = 50'

NOTE:
 SEE SHEET LA-C-005 FOR PLOT PLAN
 SHEET LA-C-007 FOR GRADING PLAN
 AND SHEET LA-C-008 FOR UTILITY PLAN
 AT CORNER STATION.



KEY PLAN
 LIGO SITE NO. 2
 LIVINGSTON, LOUISIANA



This document and the design it covers are the property of PARSONS. They are loaned only with the borrower's expressed written agreement that they will not be reproduced, copied, loaned, exhibited, or used in any other way, except by written consent from PARSONS to the borrower.

NO.	DATE	BY	CHKD	ENGR	PROJ	DESCRIPTION
B	7/24/96	WRB	ML	UB	TOM	ISSUED FOR BID
A	6/14/96	WRB	ML	UB	TOM	FINAL DESIGN REVIEW

DRAWN	WRB
CHECKED	
ENGINEER	
PROJ	

PARSONS
 100 WEST WALNUT STREET
 PASADENA, CALIFORNIA

LIGO
 CALIFORNIA INSTITUTE OF TECHNOLOGY
 MASSACHUSETTS INSTITUTE OF TECHNOLOGY

**LASER INTERFEROMETER
 GRAVITATIONAL-WAVE OBSERVATORY
 SITE NO. 2 - LIVINGSTON, LOUISIANA**

CIVIL
 SOUTHWEST ARM
 PLAN AND PROFILE
 STA 0+00 TO STA 14+00

AS NOTED
 CONTRACT NUMBER: PP150969
 PROJECT NUMBER: 8094

LA-C-031

Mon Jul 22 07:41:49 1996 s3-v18b2 J:\PLOTS\QUEUES\18B2\CE031A.PRF