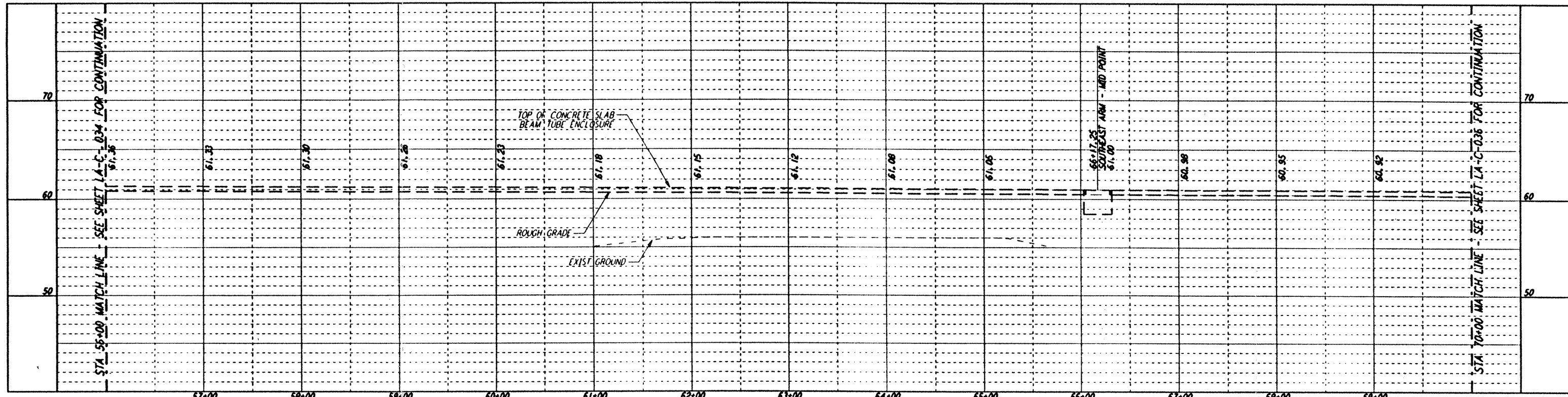
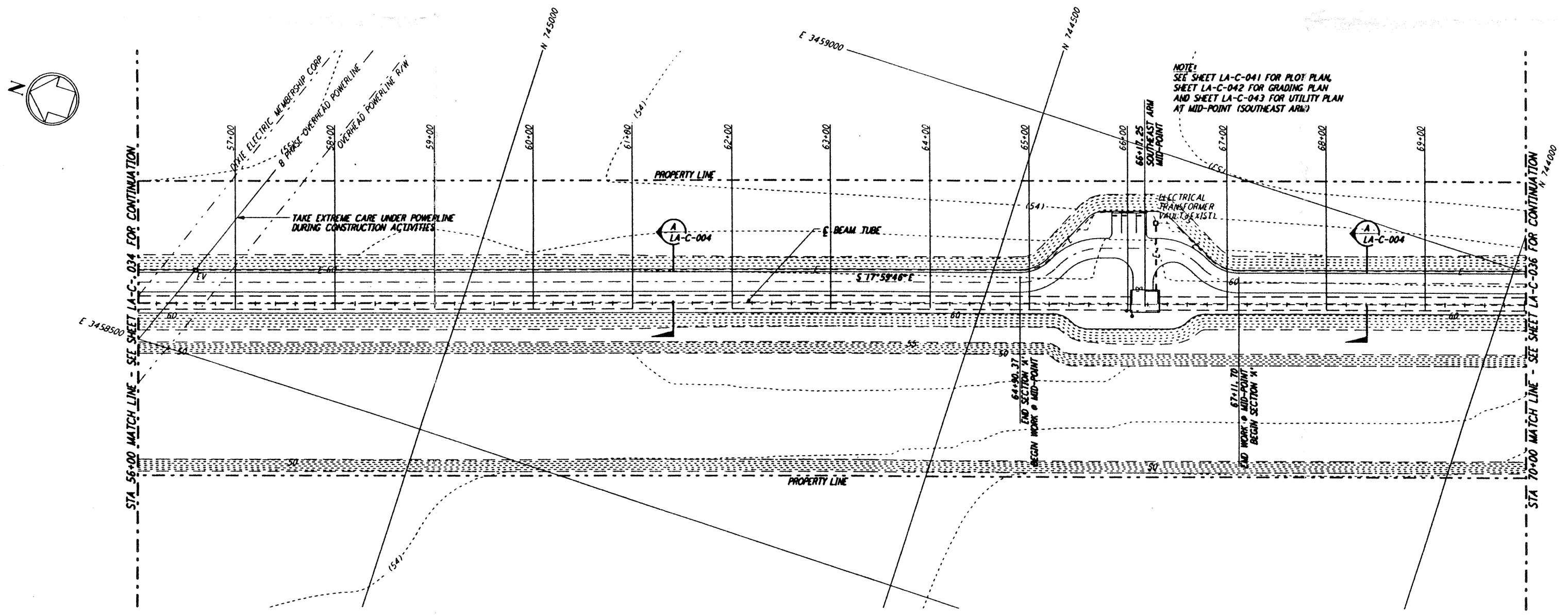


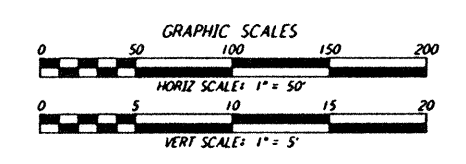
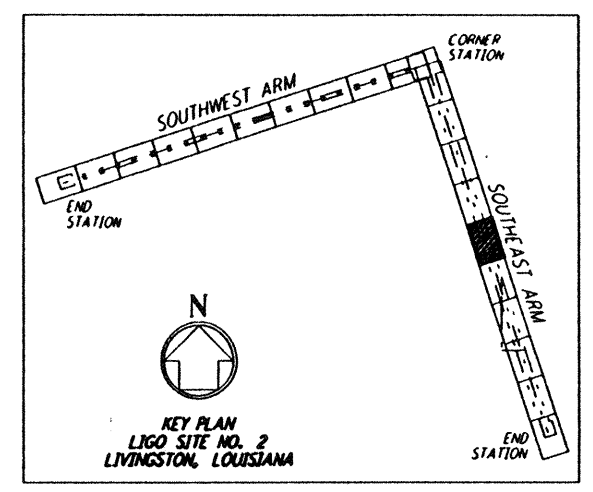
NOTES:
 1. SEE SHEET LA-C-002 FOR GENERAL NOTES, LEGEND AND ABBREVIATIONS.
 2. SEE SHEET LA-C-004 FOR TYPICAL SECTIONS AND DETAILS.



PROFILE
 SCALES: HORIZ: 1" = 50'
 VERT: 1" = 5'



PLAN
 SCALE: 1" = 50'



This document and the design it covers are the property of PARSONS. They are loaned only with the borrower's expressed written agreement that they will not be reproduced, copied, loaned, exhibited, or used in any other way, except by written consent from PARSONS to the borrower.

NO.	DATE	BY	CHKD	ENGR	PROJ	DESCRIPTION
B	7/24/96	WRB	ML	CA	ADD	ISSUED FOR BID
A	6/14/96	WRB	ML	CB	TCM	FINAL DESIGN REVIEW

DRAWN	WRB
CHECKED	
ENGINEER	
PROJ	

PARSONS
 100 WEST WALNUT STREET
 PASADENA, CALIFORNIA

LIGO
 CALIFORNIA INSTITUTE OF TECHNOLOGY
 MASSACHUSETTS INSTITUTE OF TECHNOLOGY

LASER INTERFEROMETER GRAVITATIONAL-WAVE OBSERVATORY SITE NO. 2 - LIVINGSTON, LOUISIANA

TITLE	CIVIL	SHEET NUMBER	AS NOTED	CONTRACT NUMBER	PROJECT NUMBER
	SOUTHEAST ARM			PP150969	8094
	PLAN AND PROFILE				
	STA 56+00 TO STA 70+00				

LA-C-035

LIGO-D960849-B-0

LIGOLAF 3.BOR

Mon Jul 22 08:07:33 1996 s3-v18b2 J:\PLOTS\QUEUE5\18B2\CE035A.PRF