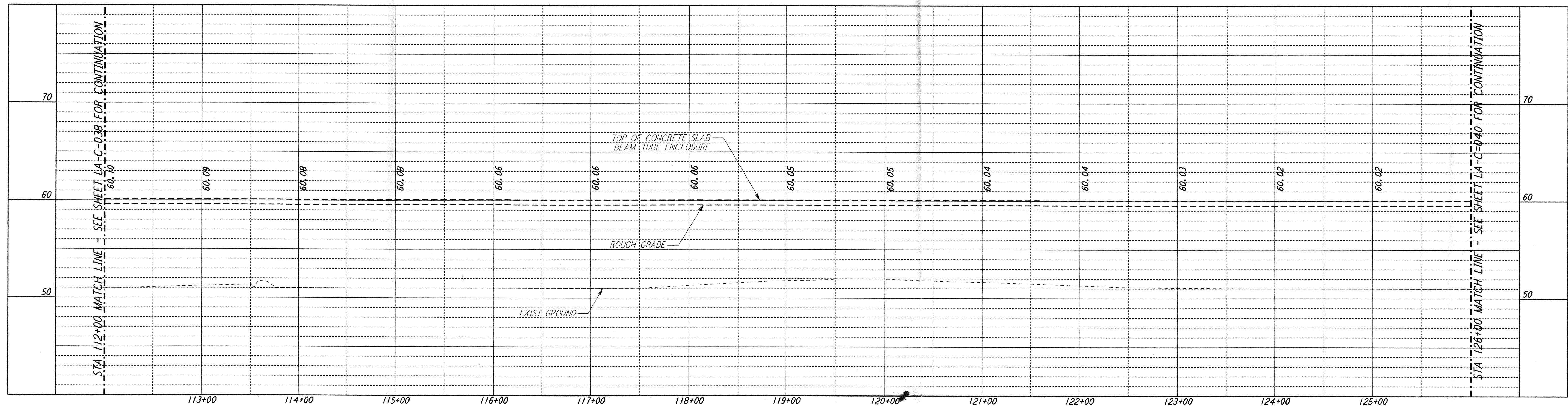
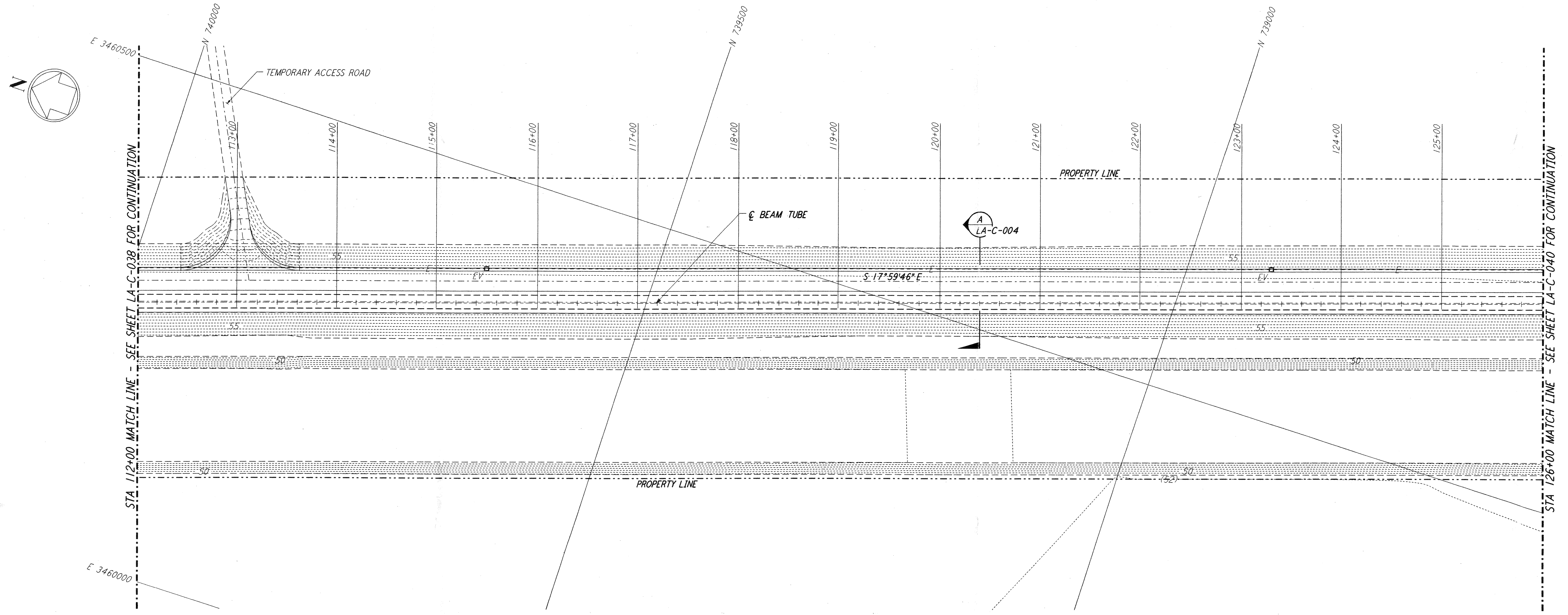


This document and the design it covers are the property of **PARSONS**. They are loaned only with the borrower's expressed written agreement that they will not be reproduced, copied, loaned, exhibited, or used in any other way, except by written consent from **PARSONS** to the borrower.

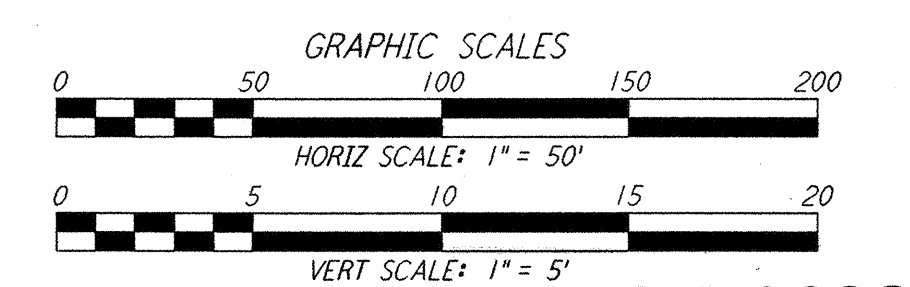
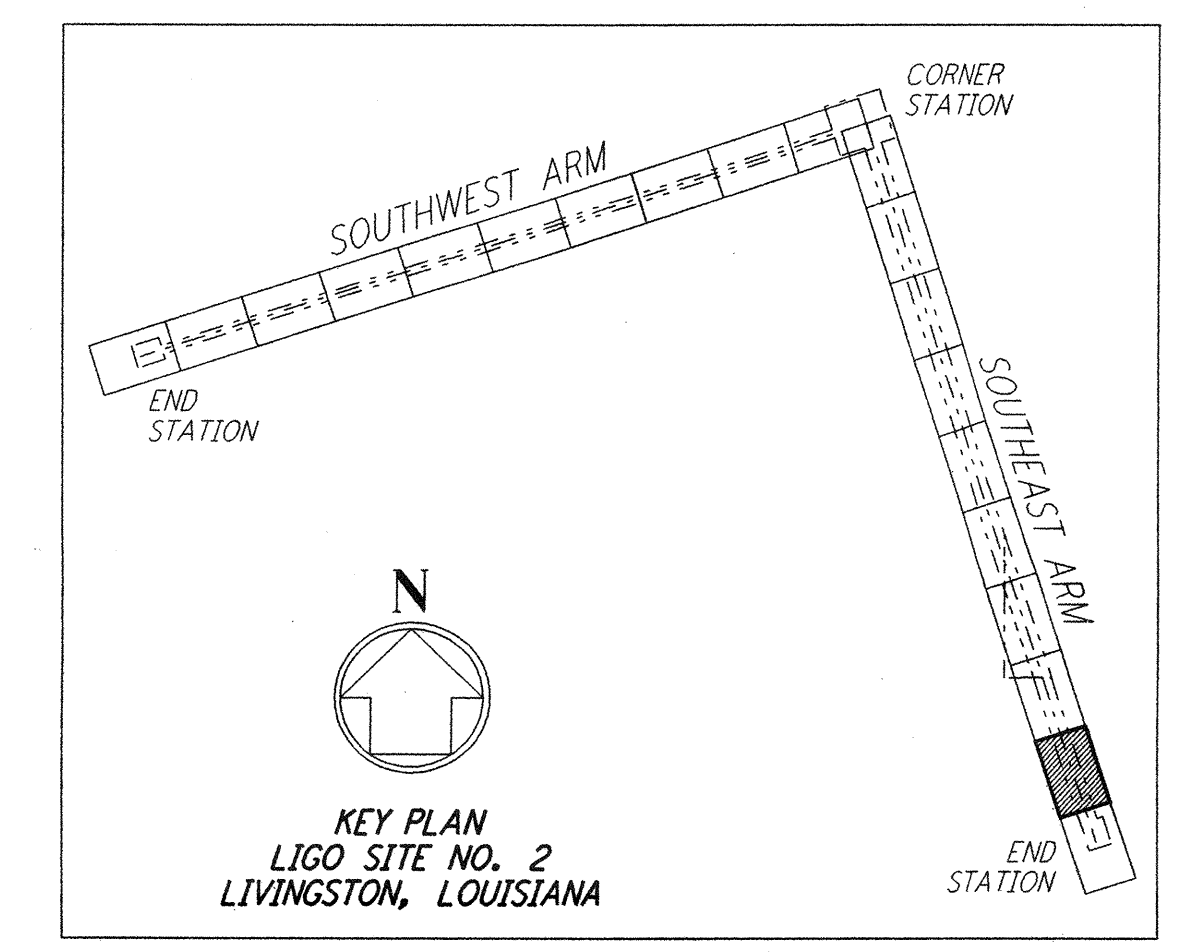
- NOTES:**
- SEE SHEET LA-C-002 FOR GENERAL NOTES, LEGEND AND ABBREVIATIONS.
  - SEE SHEET LA-C-004 FOR TYPICAL SECTIONS AND DETAILS.



**PROFILE**  
 SCALES: HORIZ: 1" = 50'  
 VERT: 1" = 5'



**PLAN**  
 SCALE: 1" = 50'



| NO. | DATE     | BY  | CHKD | ENGR | PROJ | DESCRIPTION                |
|-----|----------|-----|------|------|------|----------------------------|
| 2   | 08-07-98 | WRB | ML   | TDM  |      | ISSUED FOR AS-BUILT        |
| 1   | 2-3-97   | WRB | ML   | TDM  |      | REVISED PROFILE ELEVATIONS |

|                         |              |
|-------------------------|--------------|
| ISSUED FOR CONSTRUCTION |              |
| DRAWN                   | WRB 11-15-96 |
| CHECKED                 | ML 11-15-96  |
| ENGINEER                | JB 11-15-96  |
| PROJ                    | TDM 11-15-96 |

**AS-BUILT DRAWINGS**



100 WEST WALNUT STREET  
 PASADENA, CALIFORNIA



CALIFORNIA INSTITUTE OF TECHNOLOGY  
 MASSACHUSETTS INSTITUTE OF TECHNOLOGY

**LIGO-D960853-02-0**

LASER INTERFEROMETER  
 GRAVITATIONAL-WAVE OBSERVATORY  
 SITE NO. 2 - LIVINGSTON, LOUISIANA

|  |          |                 |                |
|--|----------|-----------------|----------------|
| TITLE  | SCALE    | CONTRACT NUMBER | PROJECT NUMBER |
| CIVIL<br>SOUTHWEST ARM<br>PLAN AND PROFILE<br>STA 112+00 TO STA 126+00 | AS NOTED | PP150969        | 8094           |
| SHEET NUMBER   |          | REVISIONS       |                |
| <b>LA-C-039</b>  |          |                 |                |