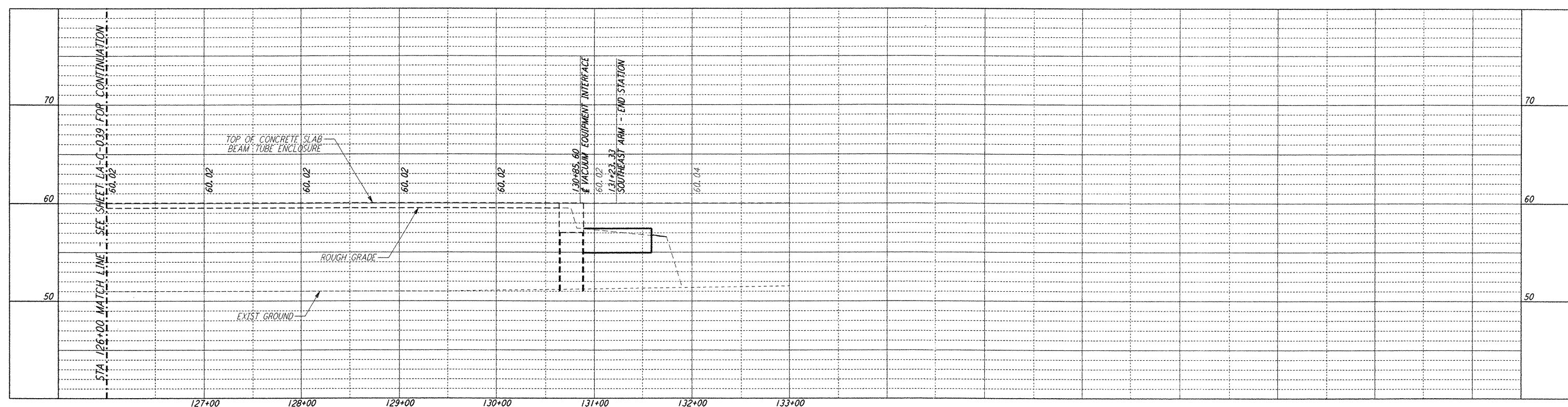
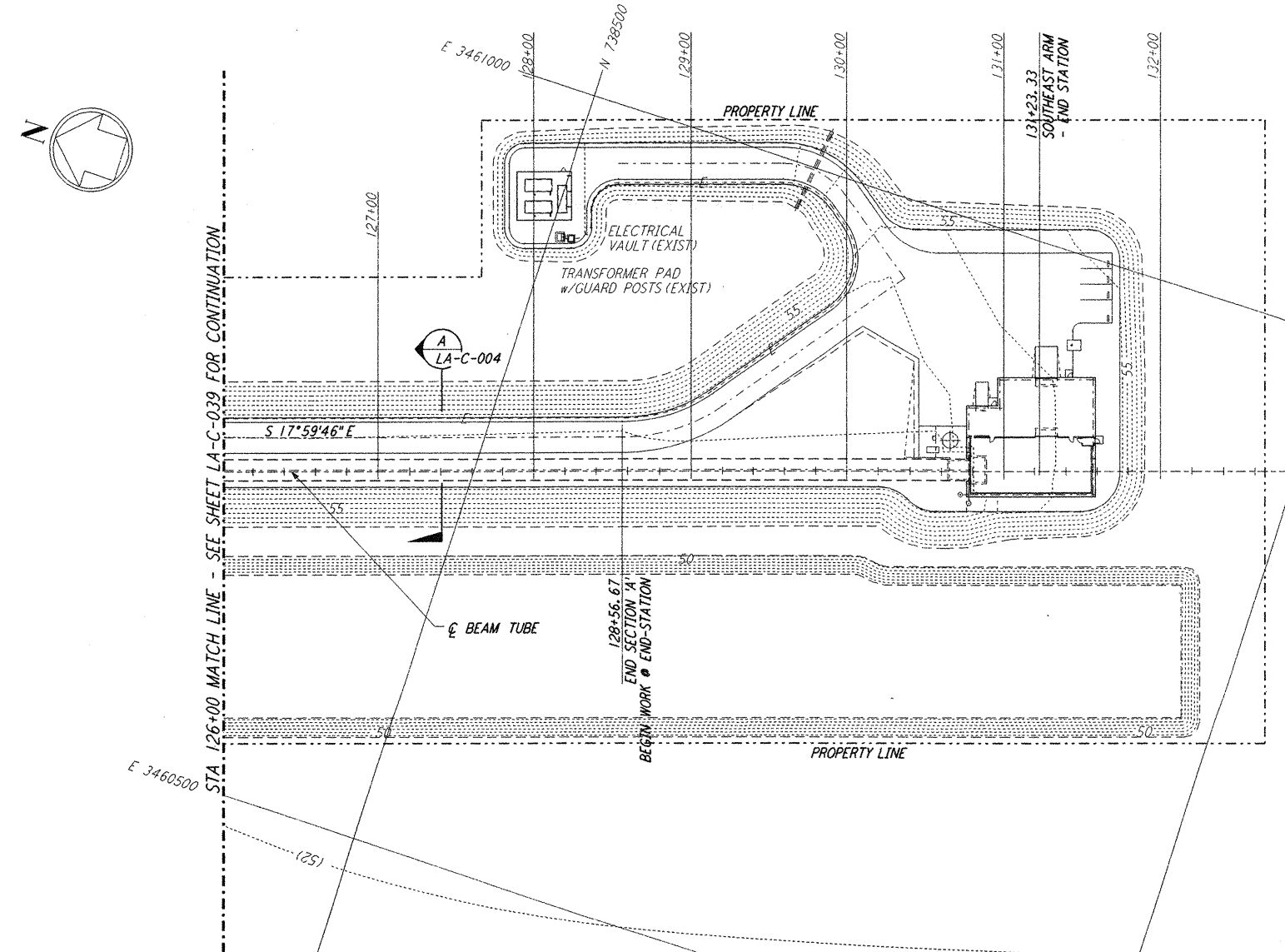


- NOTES:**
- SEE SHEET LA-C-002 FOR GENERAL NOTES, LEGEND AND ABBREVIATIONS.
 - SEE SHEET LA-C-004 FOR TYPICAL SECTIONS AND DETAILS.



PROFILE

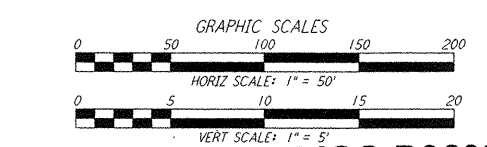
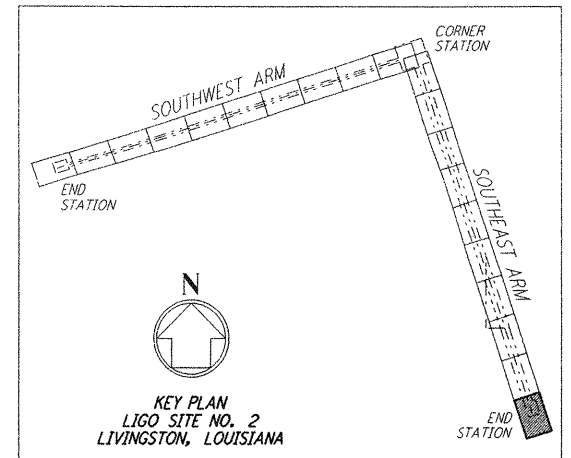
SCALES: HORIZ: 1" = 50'
 VERT: 1" = 5'



NOTE:
 SEE SHEET LA-C-045 FOR PLOT PLAN,
 SHEET LA-C-046 FOR GRADING PLAN
 AND SHEET LA-C-047 FOR UTILITY PLAN
 AT END-STATION (SOUTHEAST ARM)

PLAN

SCALE: 1" = 50'



LIGO-D960854-02-O

LASER INTERFEROMETER
 GRAVITATIONAL-WAVE OBSERVATORY
 SITE NO. 2 - LIVINGSTON, LOUISIANA

TITLE: CIVIL SOUTHEAST ARM PLAN AND PROFILE
 STA 126+00 TO STA 133+00

AS NOTED PPI 50969 8094

LA-C-040

PARSONS

100 WEST WALNUT STREET
 PASADENA, CALIFORNIA

LIGO

CALIFORNIA INSTITUTE OF TECHNOLOGY
 MASSACHUSETTS INSTITUTE OF TECHNOLOGY

ISSUED FOR CONSTRUCTION			
DRAWN	WRB	11-15-96	
CHECKED	ML	11-15-96	
ENGINEER	JB	11-15-96	
PROJ	TDM	11-15-96	
AS-BUILT DRAWINGS			

ISSUED FOR AS-BUILT						
REVISED PROFILE ELEVATIONS						
NO.	DATE	BY	CHKD	ENGR	PROJ	DESCRIPTION
2	08-07-98	WRB	CP	JB	WUW	ISSUED FOR AS-BUILT
1	2-3-97	WRB	ML	JB	TDM	REVISED PROFILE ELEVATIONS

NO.	DATE	BY	CHKD	ENGR	PROJ	DESCRIPTION

This document and the design it covers are the property of **PARSONS**. They are loaned only with the borrower's expressed written agreement that they will not be reproduced, copied, loaned, exhibited, or used in any other way, except by written consent from **PARSONS** to the borrower.

This document and the design it covers are the property of **PARSONS**. They are loaned only with the borrower's expressed written agreement that they will not be reproduced, copied, loaned, exhibited, or used in any other way, except by written consent from **PARSONS** to the borrower.