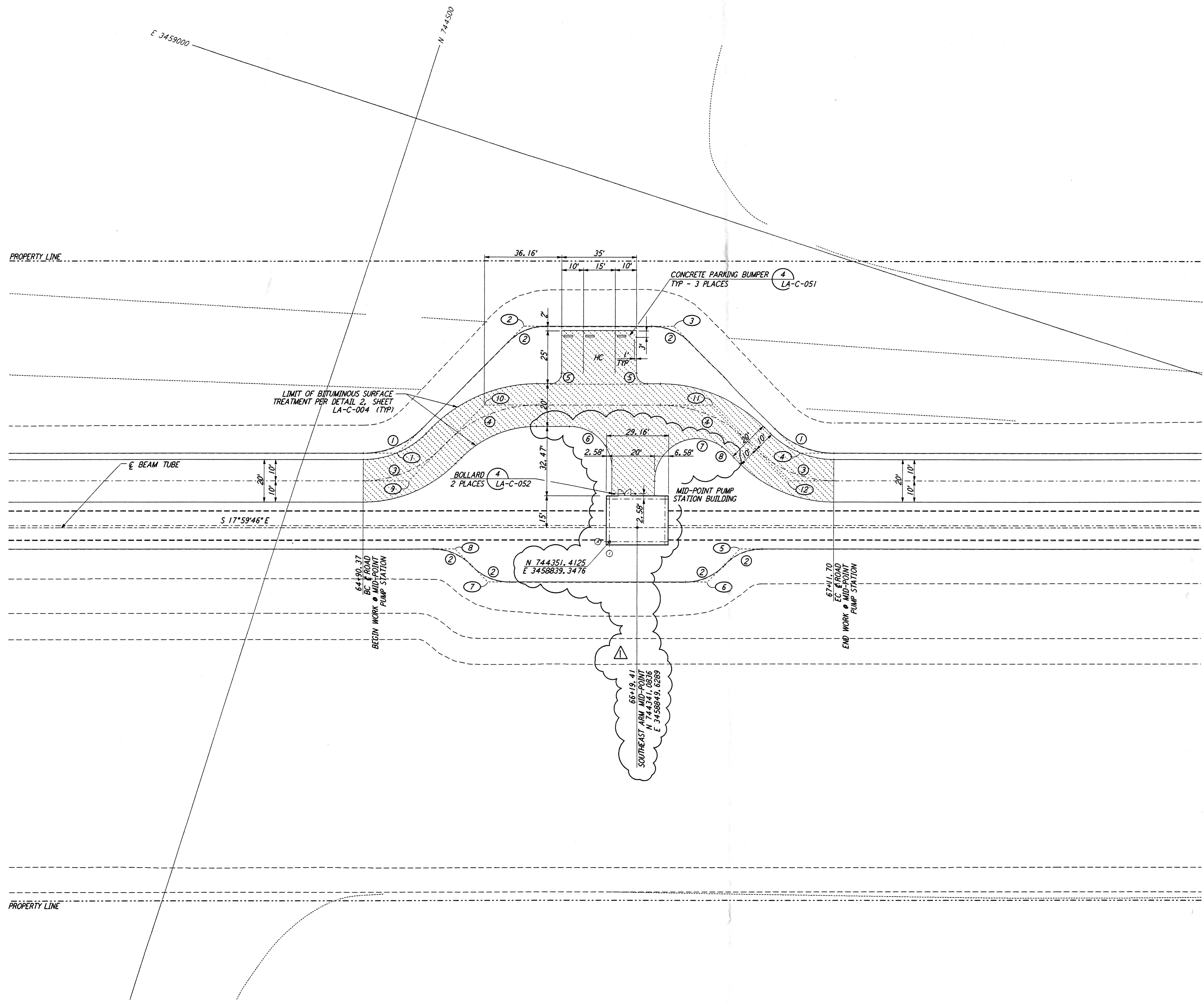
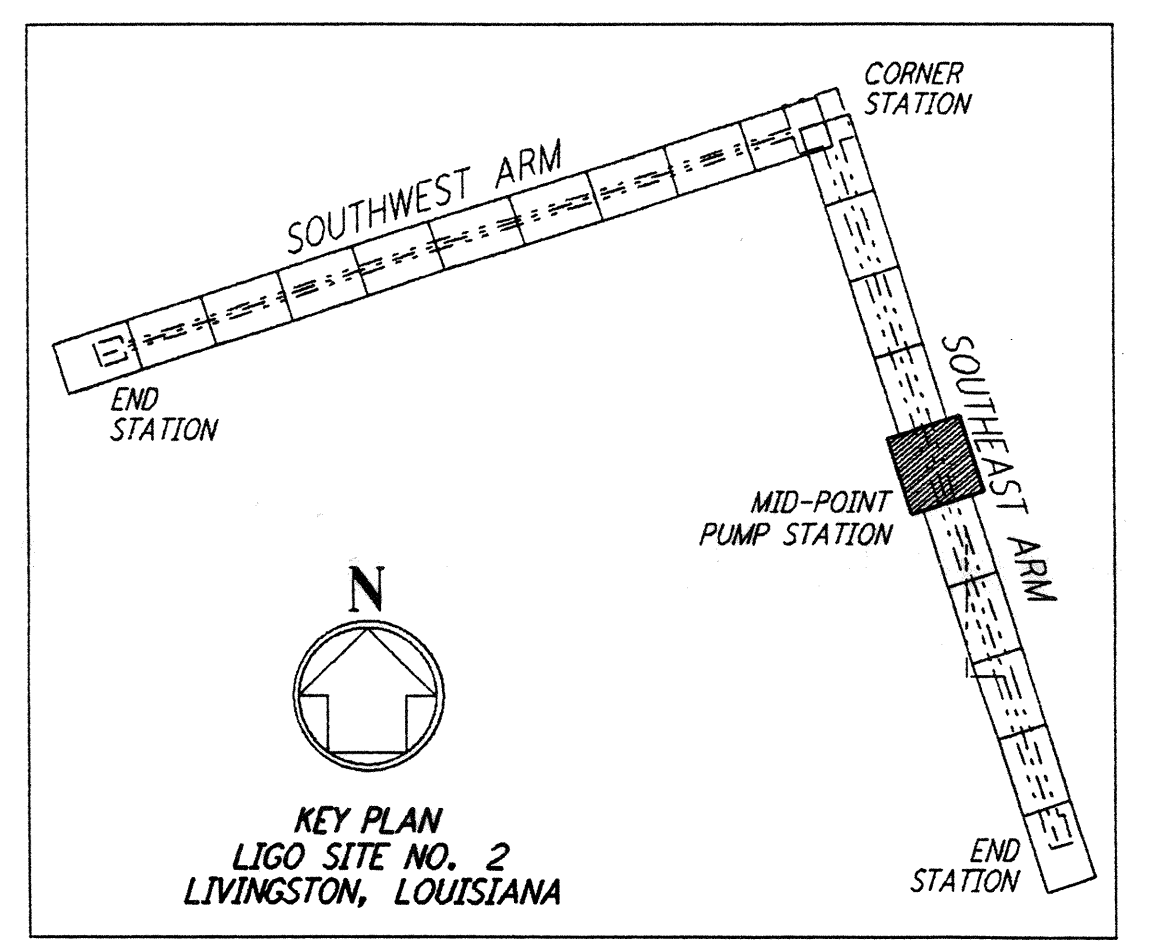


NOTES:
 1. SEE SHEET LA-C-002 FOR GENERAL NOTES, LEGEND AND ABBREVIATIONS.



CURVE DATA					
Δ	RADIUS	LENGTH	TANGENT	REMARK	
1	45°00'00"	39'	30.63'	16.16'	EDGE OF PAD (EXIST)
2	45°00'00"	25'	19.63'	10.36'	EDGE OF PAD (EXIST)
3	45°00'00"	52'	40.84'	21.54'	Ø ROAD
4	45°00'00"	60'	47.12'	24.85'	Ø ROAD
5	90°00'00"	5'	7.85'	5.00'	
6	90°00'00"	20'	31.42'	20.00'	
7	125°50'09"	20'	43.92'	39.11'	
8	9°09'53"	50'	8.00'	4.01'	

COORDINATES			
Δ	NORTH	EAST	REMARK
1	744459.2558	3458848.0417	PI EDGE OF PAD (EXIST)
2	744421.0616	3458922.9895	PI EDGE OF PAD (EXIST)
3	744354.4348	3458944.6329	PI EDGE OF PAD (EXIST)
4	744279.4870	3458906.4386	PI EDGE OF PAD (EXIST)
5	744291.7284	3458855.1473	PI EDGE OF PAD (EXIST)
6	744301.6935	3458835.5930	PI EDGE OF PAD (EXIST)
7	744399.6545	3458803.7709	PI EDGE OF PAD (EXIST)
8	744419.2088	3458813.7361	PI EDGE OF PAD (EXIST)
9	744450.1181	3458837.3414	PI Ø ROAD
10	744427.3479	3458882.0229	PI Ø ROAD
11	744325.2733	3458915.1812	PI Ø ROAD
12	744280.5922	3458892.4109	PI Ø ROAD

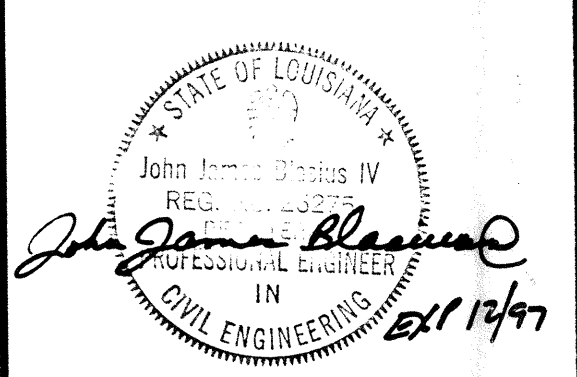


not be reproduced, copied, loaned, exhibited, or used in any other way, except by written consent from PARSONS to the borrower.

This document and the design it covers are the property of PARSONS. They are loaned only with the borrower's expressed written agreement that they will

REV. NO.	DATE	BY	CHKD	ENGR	PROJ	DESCRIPTION
1	2-3-97	WRB	CL	JB	TDM	REVISED MID STATION, CURVE DATA

ISSUED FOR CONSTRUCTION		
DRAWN	WRB	11-15-96
CHECKED	ML	11-15-96
ENGINEER	JB	11-15-96
PROJ	TDM	11-15-96



100 WEST WALNUT STREET
 PASADENA, CALIFORNIA

CALIFORNIA INSTITUTE OF TECHNOLOGY
 MASSACHUSETTS INSTITUTE OF TECHNOLOGY

LASER INTERFEROMETER
 GRAVITATIONAL-WAVE OBSERVATORY
 SITE NO. 2 - LIVINGSTON, LOUISIANA

TITLE: CIVIL
 SOUTHEAST ARM
 PUMP STATION
 PLOT PLAN

SCALE: 1" = 20'
 CONTRACT NUMBER: PPI50969
 PROJECT NUMBER: 8094

SHEET NUMBER: **LA-C-041**