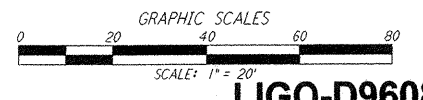
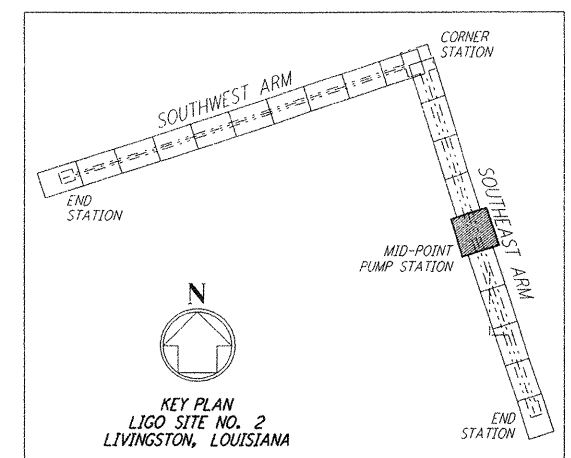
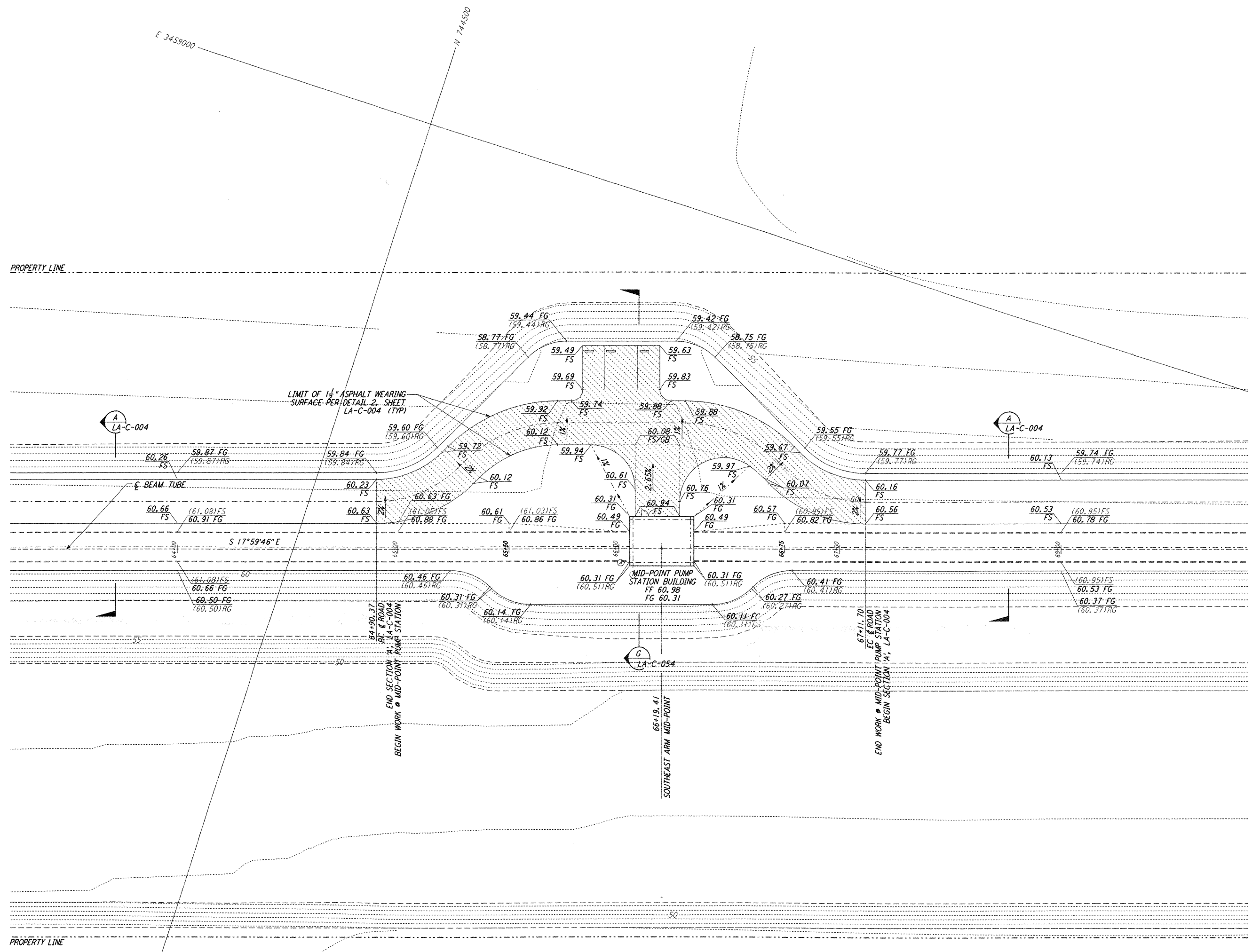


**NOTES:**  
 1. SEE SHEET LA-C-002 FOR GENERAL NOTES, LEGEND AND ABBREVIATIONS.

This document and the design it covers are the property of PARSONS. They are loaned only with the borrower's expressed written agreement that they will not be reproduced, copied, loaned, exhibited, or used in any other way, except by written consent from PARSONS to the borrower.



**LIGO-D960856-02-0**

NO.	DATE	BY	CHKD	ENGR	PROJ	DESCRIPTION
2	08-07-98	WRB	ML	JD	TDM	ISSUED FOR AS-BUILT
1	2-3-97	WRB	ML	JD	TDM	REVISED MID STATION, FIN FLR ELEV, FIN GRADES

ISSUED FOR CONSTRUCTION		
DRAWN	WRB	11-15-96
CHECKED	ML	11-15-96
ENGINEER	JD	11-15-96
PROJ	TDM	11-15-96
<b>AS-BUILT DRAWINGS</b>		

**PARSONS**  
 100 WEST WALNUT STREET  
 PASADENA, CALIFORNIA

**LIGO**  
 CALIFORNIA INSTITUTE OF TECHNOLOGY  
 MASSACHUSETTS INSTITUTE OF TECHNOLOGY

**LASER INTERFEROMETER  
 GRAVITATIONAL-WAVE OBSERVATORY  
 SITE NO. 2 - LIVINGSTON, LOUISIANA**

TITLE	CIVIL SOUTHEAST ARM PUMP STATION GRADING PLAN	SCALE	1" = 20'	CONTRACT NUMBER	PP150969	PROJECT NUMBER	8094
SHEET NUMBER	<b>LA-C-042</b>	REVISIONS					