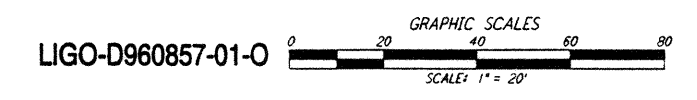
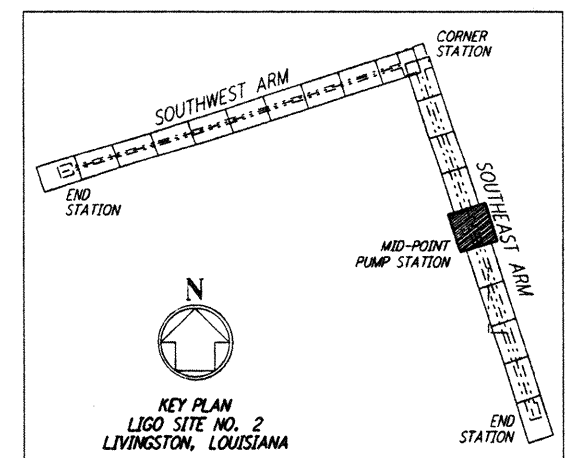
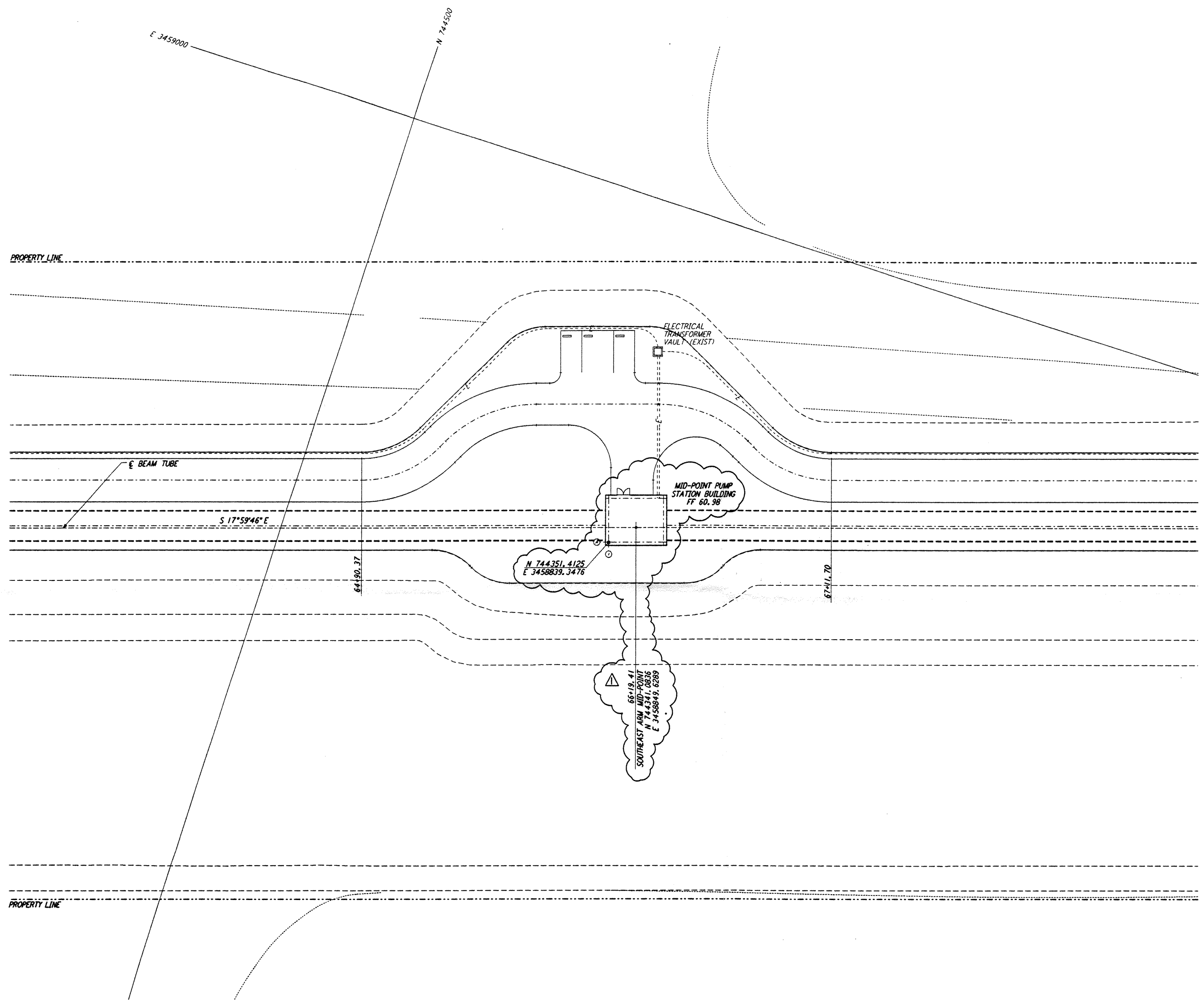
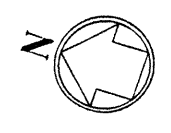


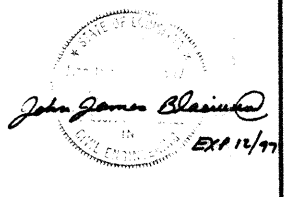
**NOTES:**  
 1. SEE SHEET LA-C-002 FOR GENERAL NOTES, LEGEND AND ABBREVIATIONS.



This document and the design it covers are the property of PARSONS. They are loaned only with the borrower's expressed written agreement that they will not be reproduced, copied, loaned, exhibited, or used in any other way, except by written consent from PARSONS to the borrower.

NO.	DATE	BY	CHKD	ENGR	PROJ	DESCRIPTION
1	2-3-97	WRB	CL	JB	TDM	REVISED MID STATION, FIN FLR ELEV

ISSUED FOR CONSTRUCTION		
DRAWN	WRB	11-15-96
CHECKED	ML	11-15-96
ENGINEER	JB	11-15-96
PROJ	TDM	11-15-96



**PARSONS**  
 100 WEST WALNUT STREET  
 PASADENA, CALIFORNIA

**LIGO**  
 CALIFORNIA INSTITUTE OF TECHNOLOGY  
 MASSACHUSETTS INSTITUTE OF TECHNOLOGY

LASER INTERFEROMETER  
 GRAVITATIONAL-WAVE OBSERVATORY  
 SITE NO. 2 - LIVINGSTON, LOUISIANA

CIVIL  
 SOUTHEAST ARM  
 PUMP STATION  
 UTILITY PLAN

SCALE: 1" = 20'  
 SHEET NUMBER: LA-C-043  
 CONTRACT NUMBER: PP150969  
 PROJECT NUMBER: 8094

Mon Feb 03 10:57:17 97 5374002 J:\LIGO\SITE2\CE\LA-C-043.DWG

Mon Feb 03 10:57:17 97 5374002 J:\LIGO\SITE2\CE\LA-C-043.DWG