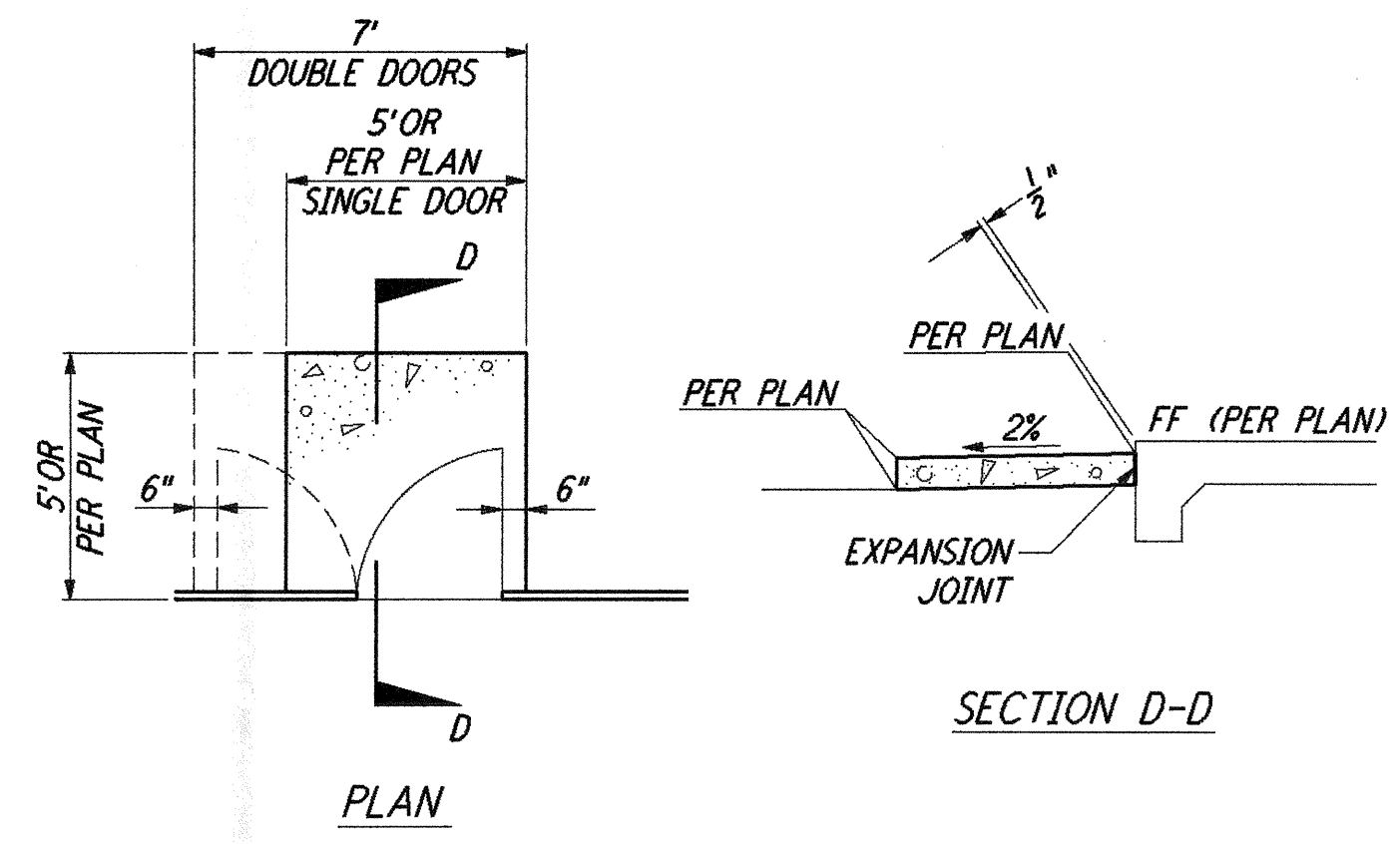
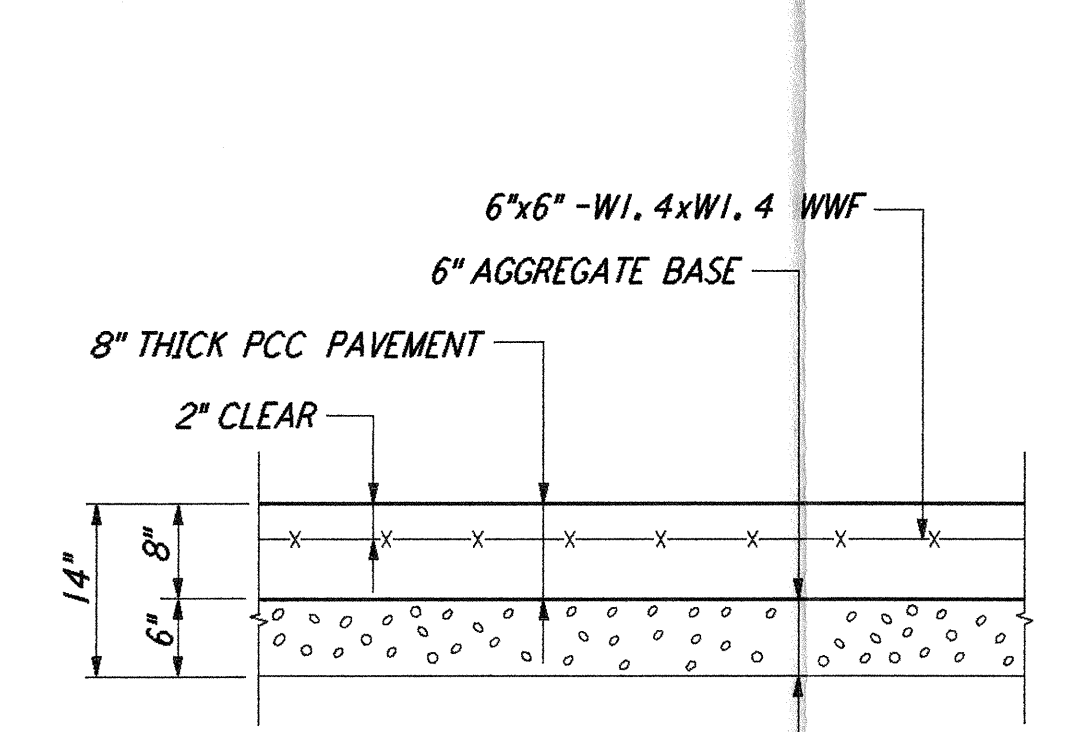


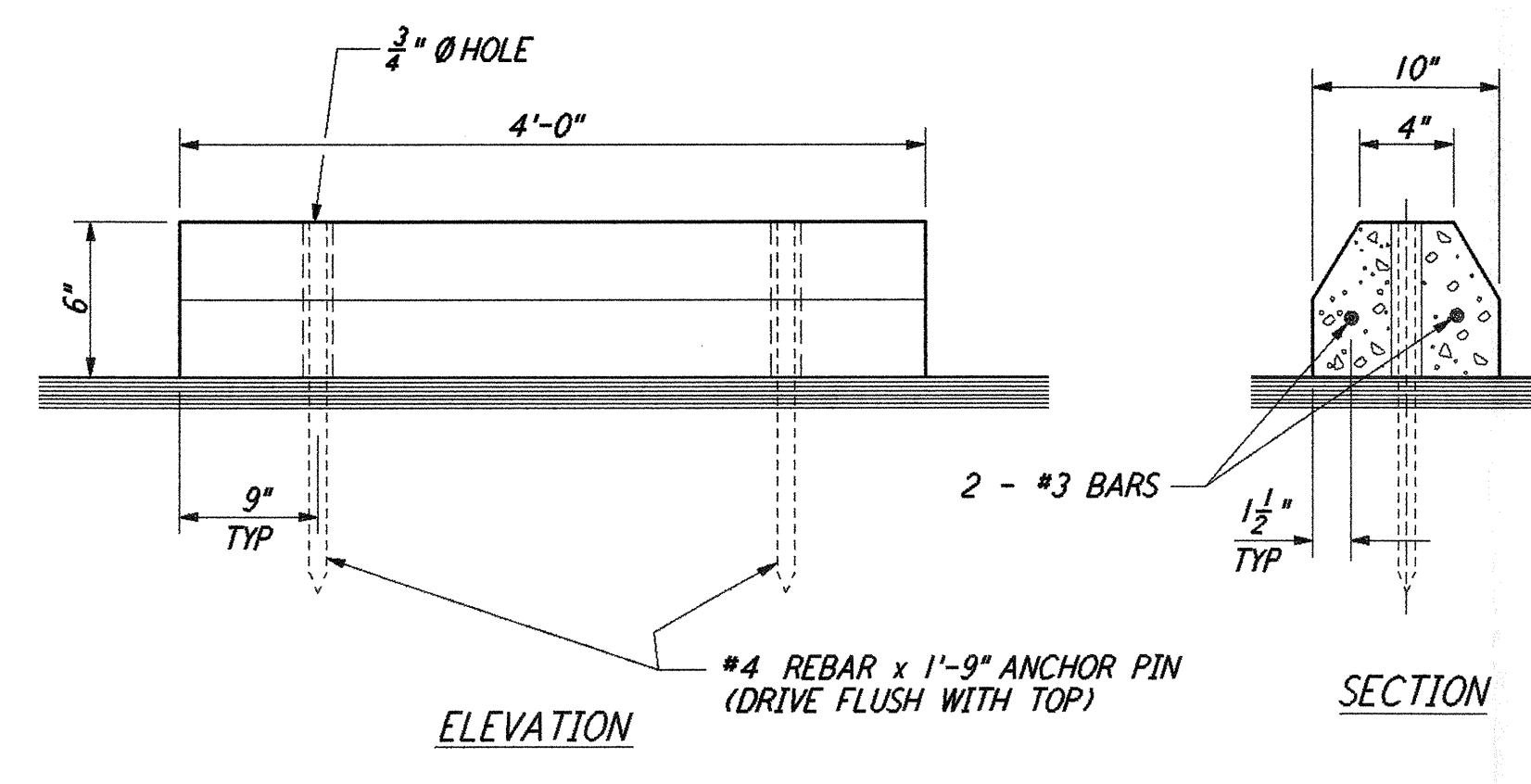
CONCRETE WALKWAY (1) REF LA-C-005, LA-C-006, LA-C-007, LA-C-008
 NOT TO SCALE



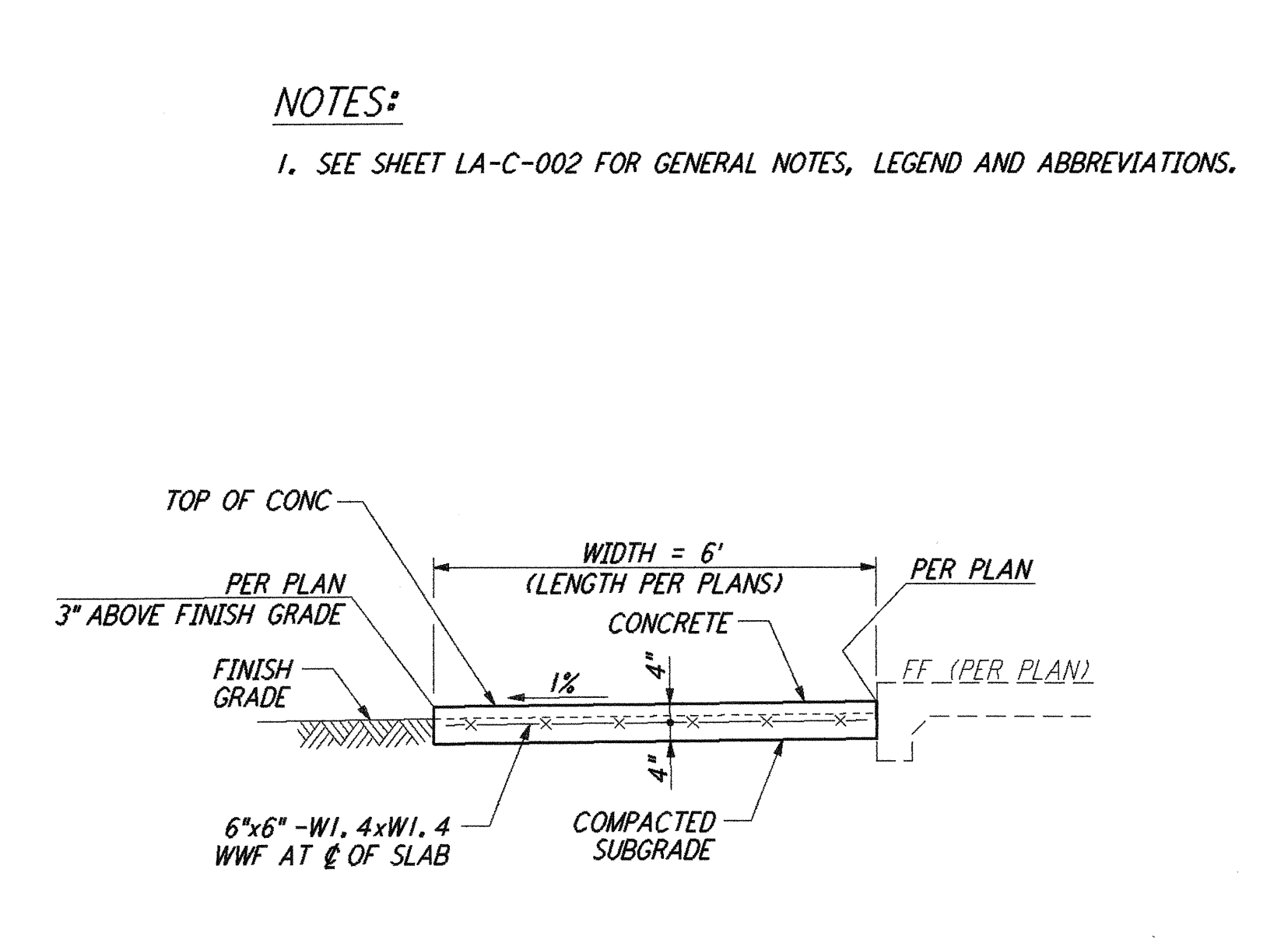
CONCRETE STOOP (2) REF LA-C-005, LA-C-006, LA-C-025, LA-C-045
 NOT TO SCALE



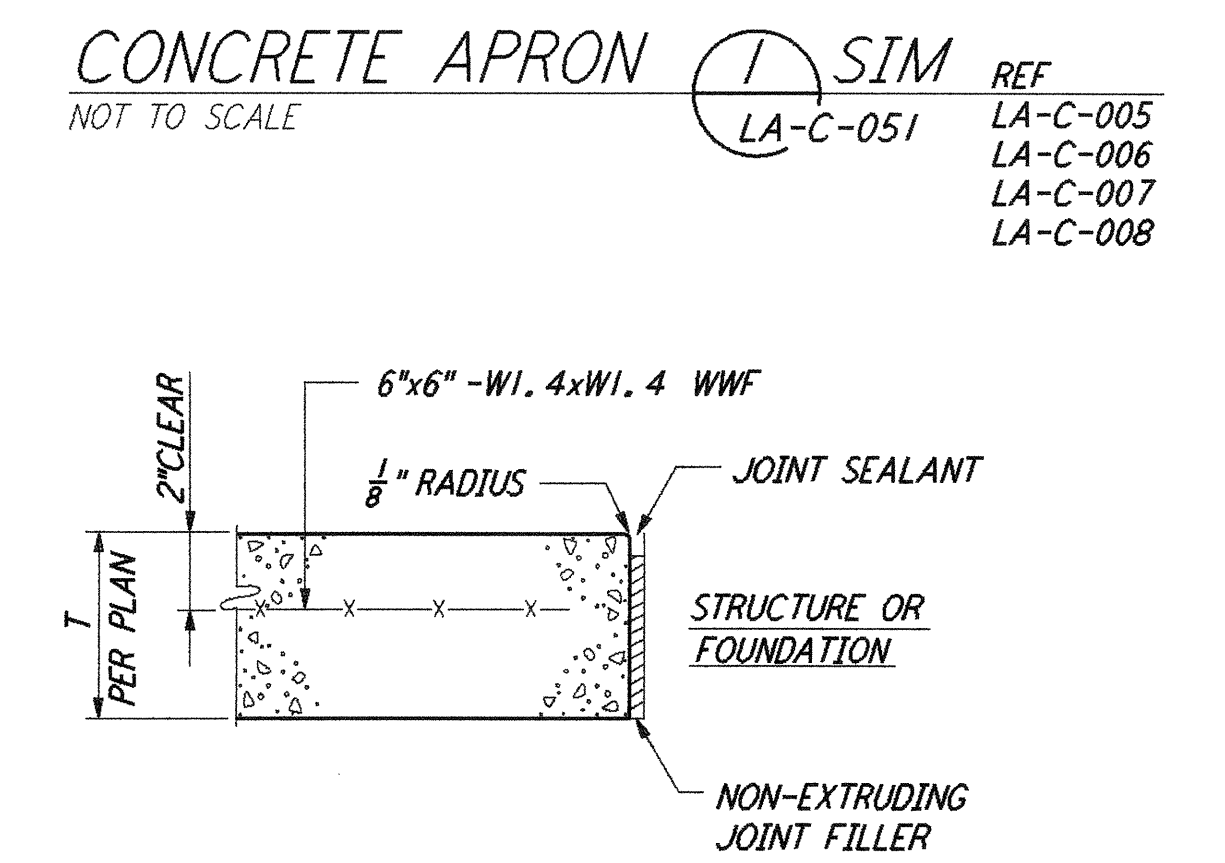
CONCRETE PAVEMENT (3) REF LA-C-005, LA-C-006, LA-C-021, LA-C-025, LA-C-041, LA-C-045
 NOT TO SCALE



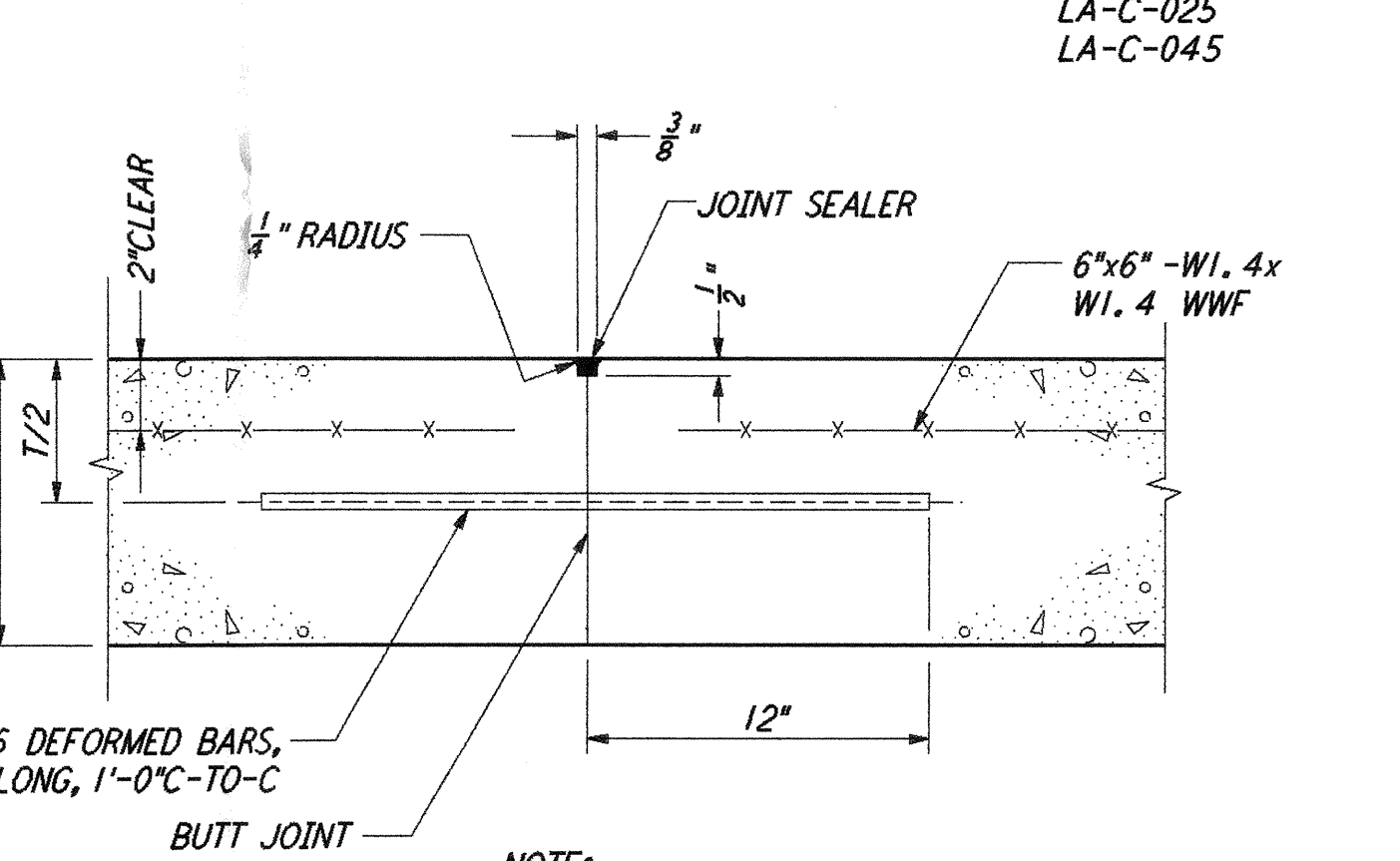
CONCRETE PARKING BUMPER (4) REF LA-C-005, LA-C-006, LA-C-021, LA-C-025, LA-C-041, LA-C-045
 NOT TO SCALE



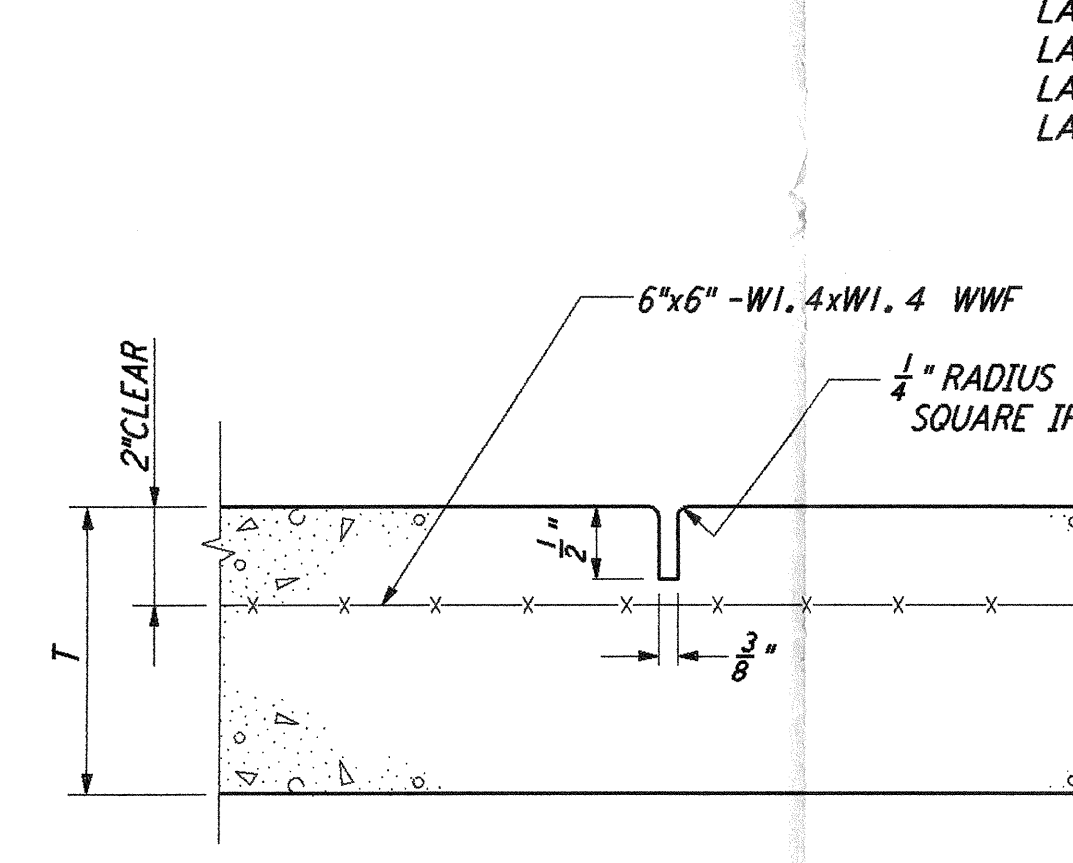
RAISED CONCRETE PAD FOR ELECTRICAL TRANSFORMERS (9) REF LA-C-051, LA-C-005
 NOT TO SCALE



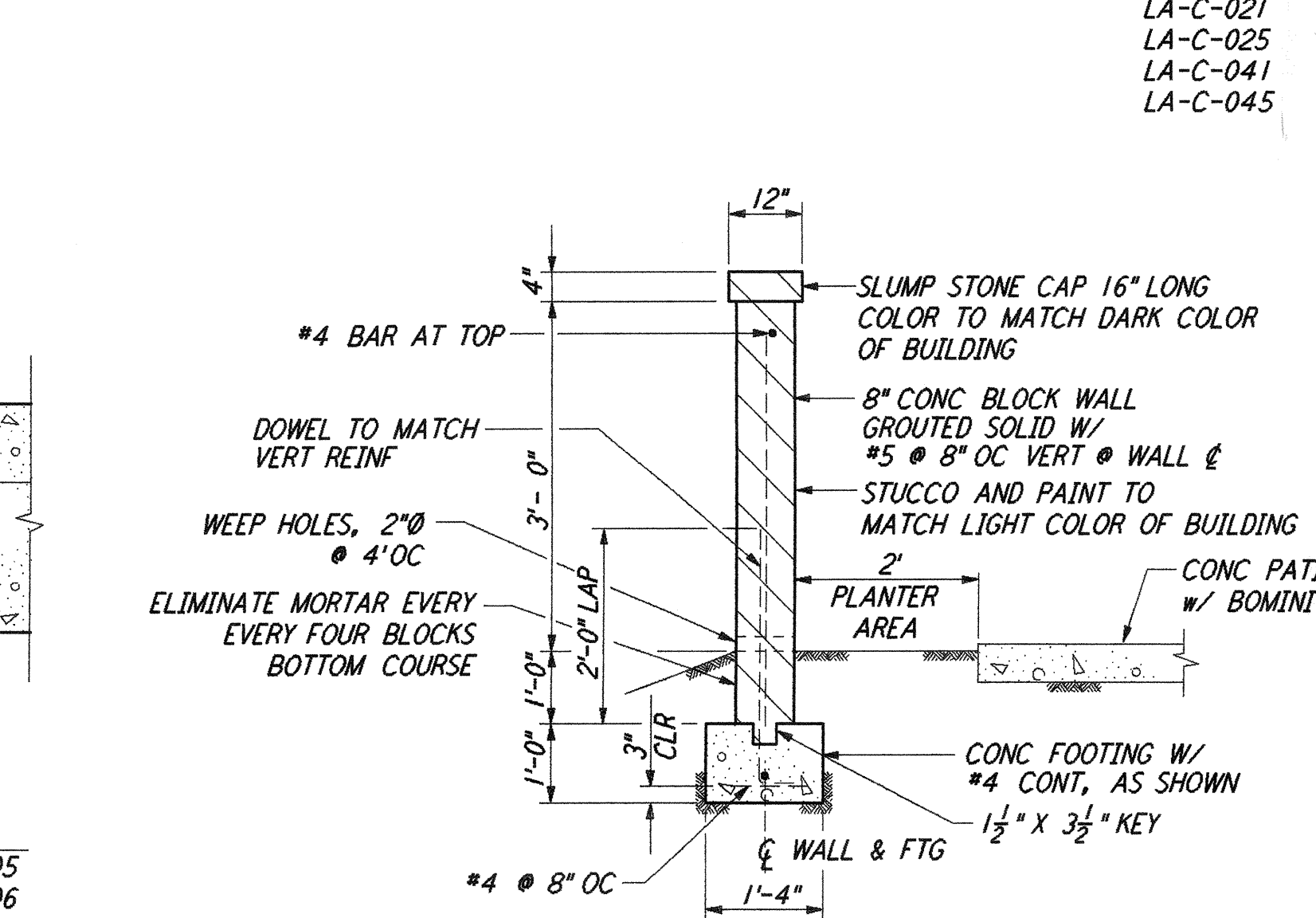
CONCRETE APRON (1) SIM REF LA-C-005, LA-C-006, LA-C-007, LA-C-008
 NOT TO SCALE



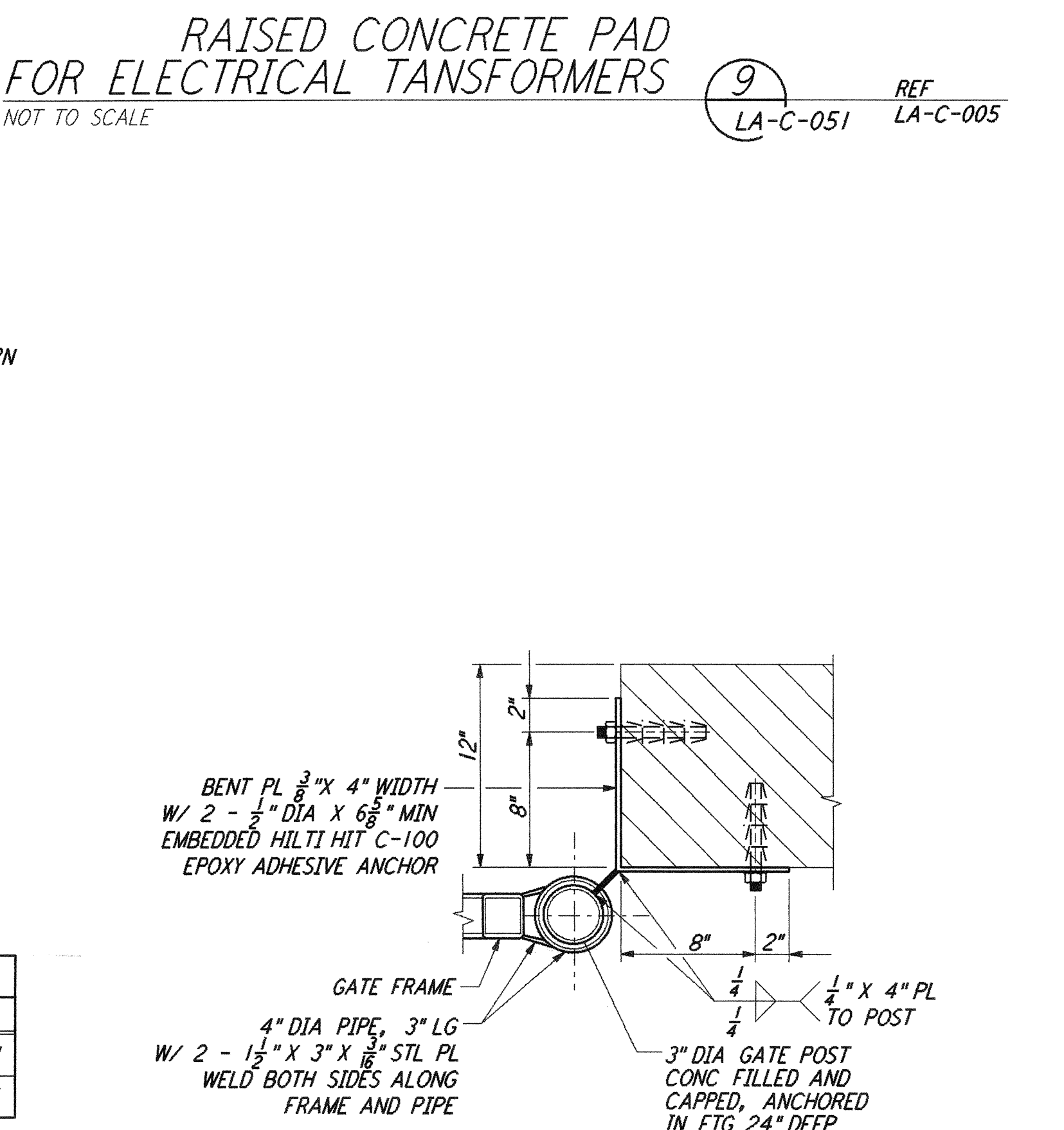
EXPANSION JOINT (5) REF LA-C-005, LA-C-006, LA-C-021, LA-C-025, LA-C-041, LA-C-045
 NOT TO SCALE



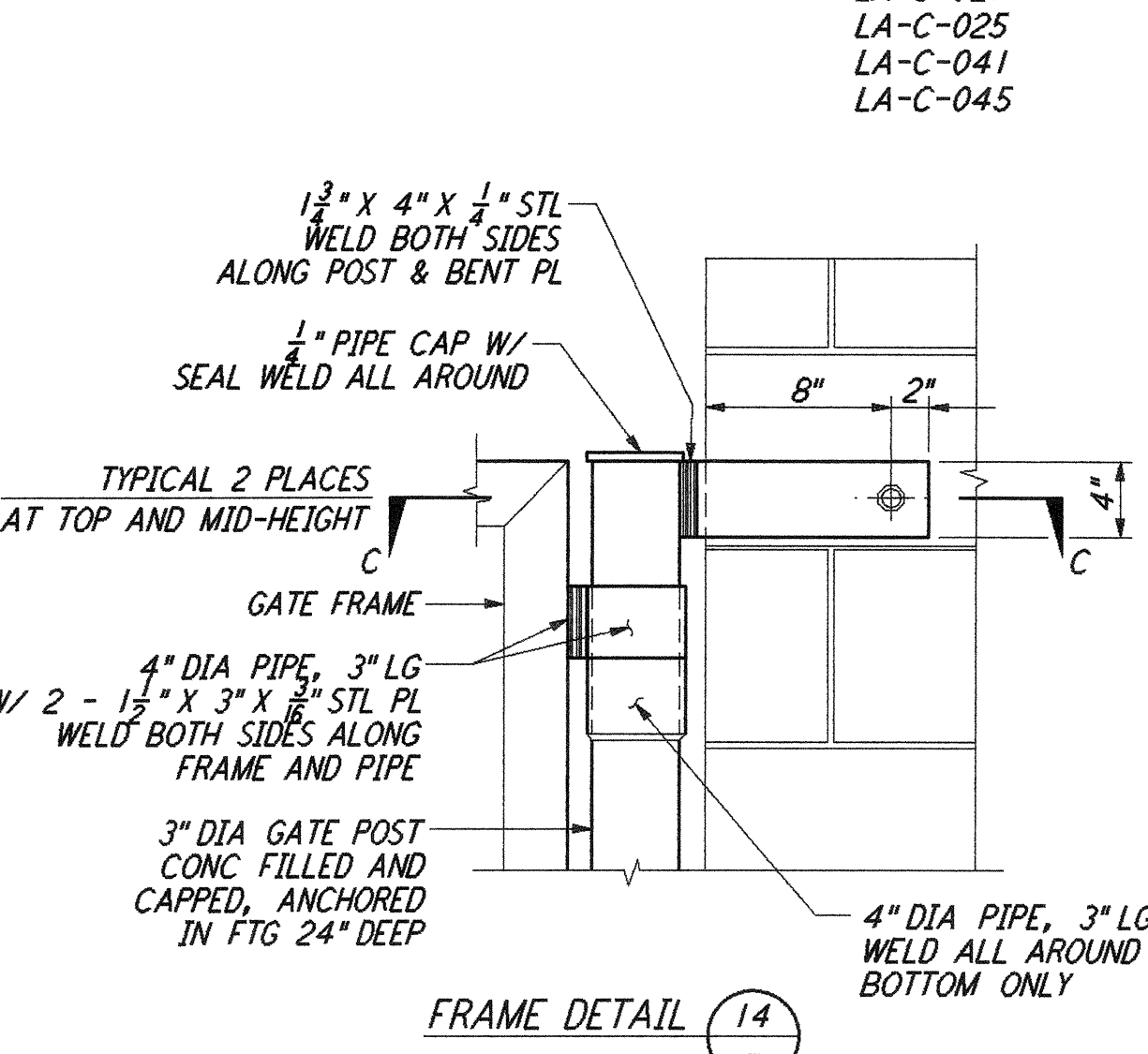
CONSTRUCTION JOINT (6) REF LA-C-005, LA-C-006, LA-C-021, LA-C-025, LA-C-041, LA-C-045
 NOT TO SCALE



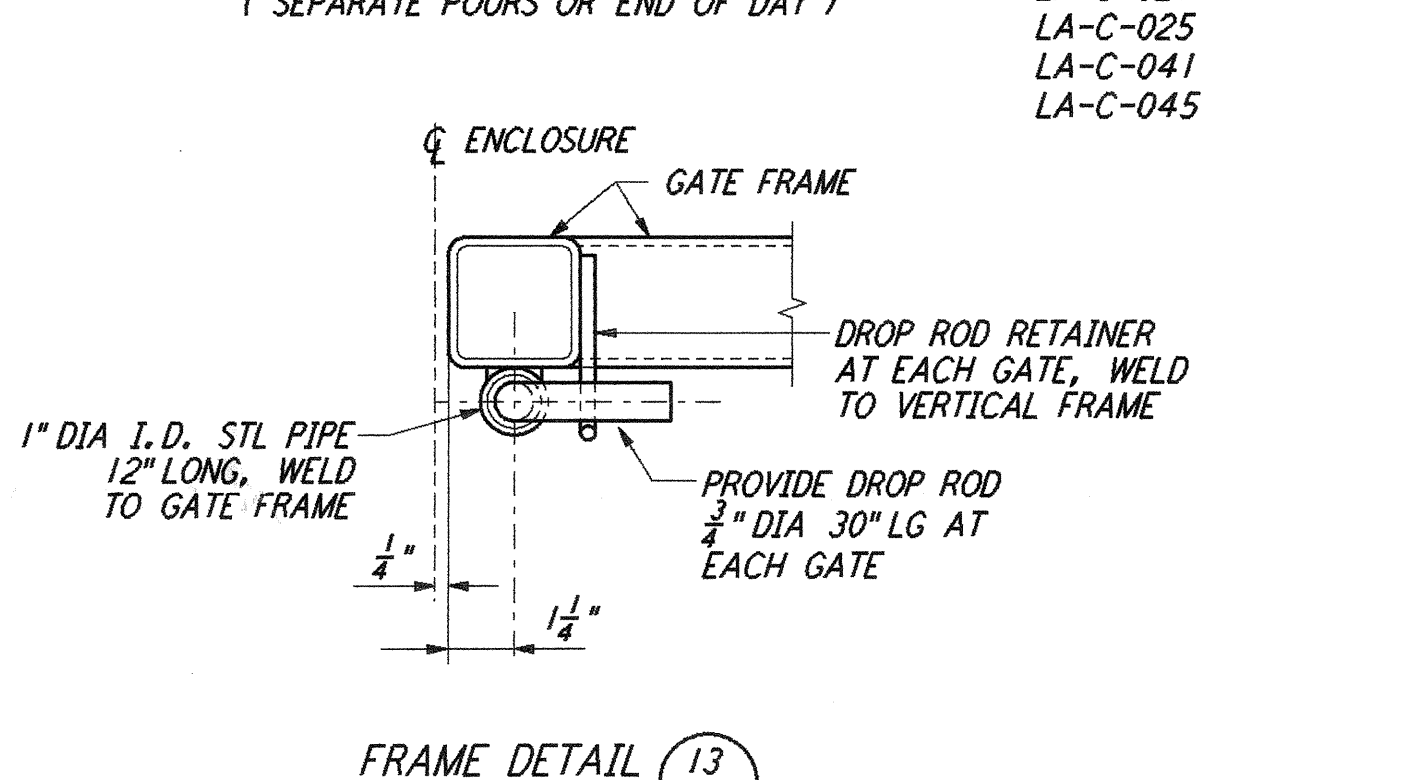
CONTRACTION JOINT (7) REF LA-C-005, LA-C-006, LA-C-021, LA-C-025, LA-C-041, LA-C-045
 NOT TO SCALE



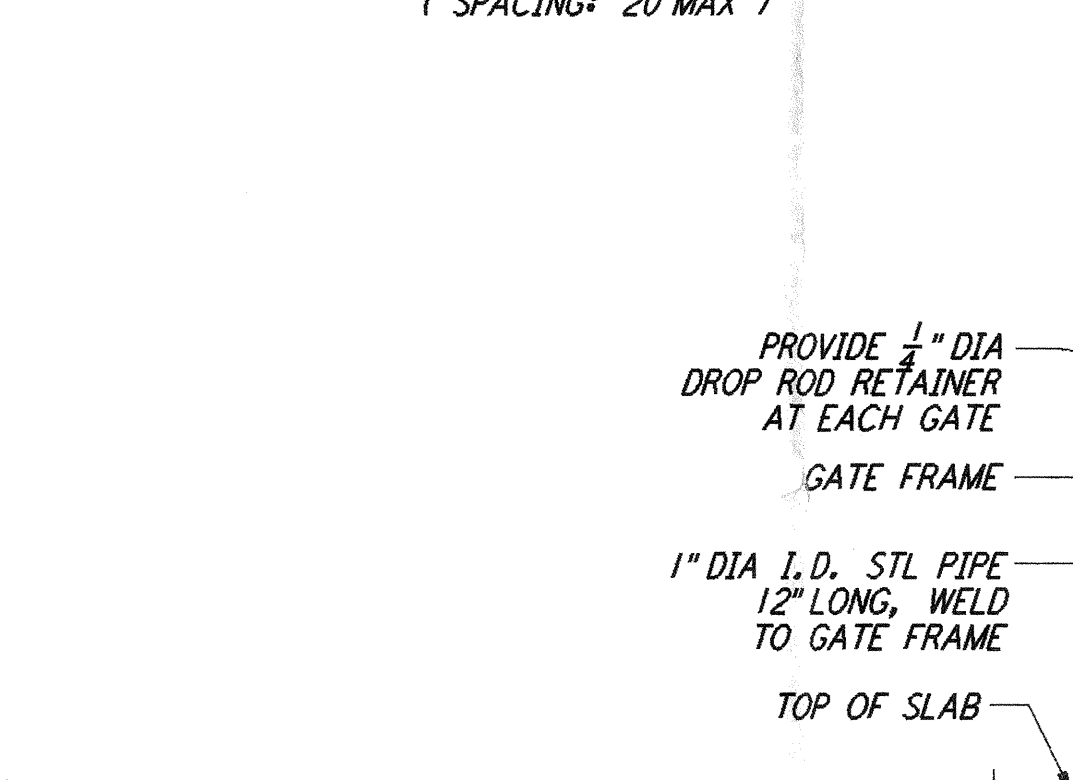
PATIO WALL (8) REF LA-C-051, LA-C-006
 NOT TO SCALE



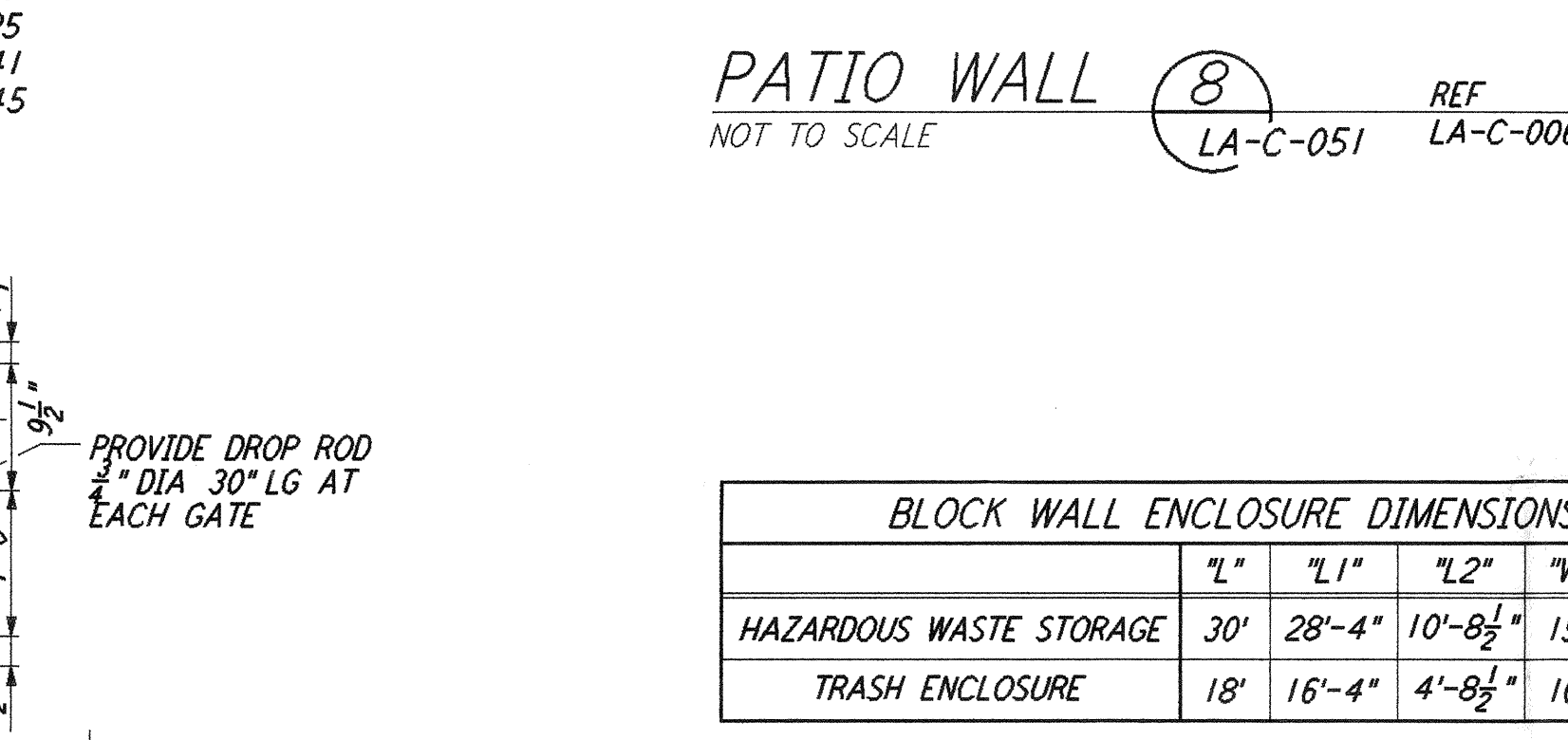
FRAME DETAIL (13)



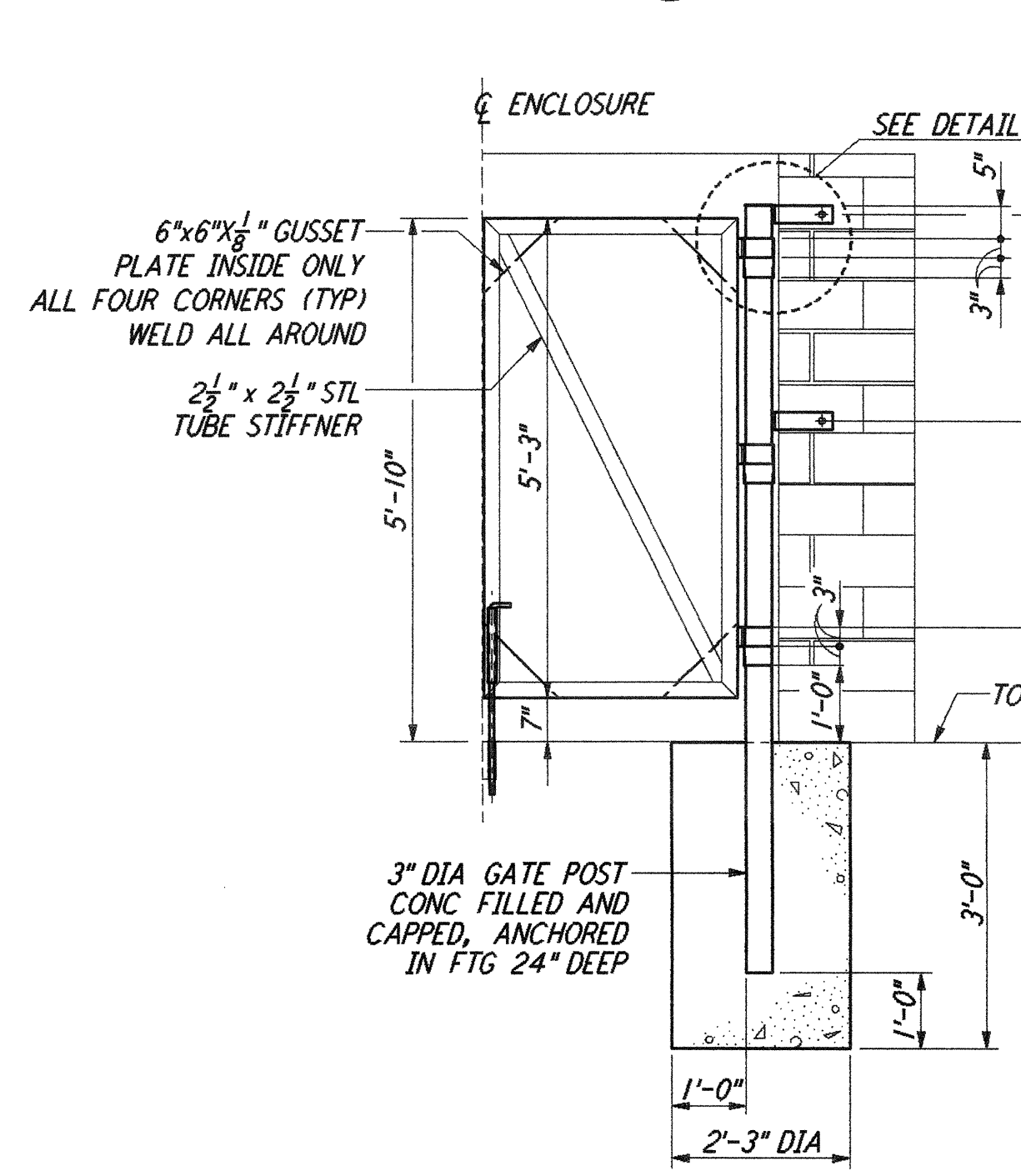
FRAME DETAIL (14)



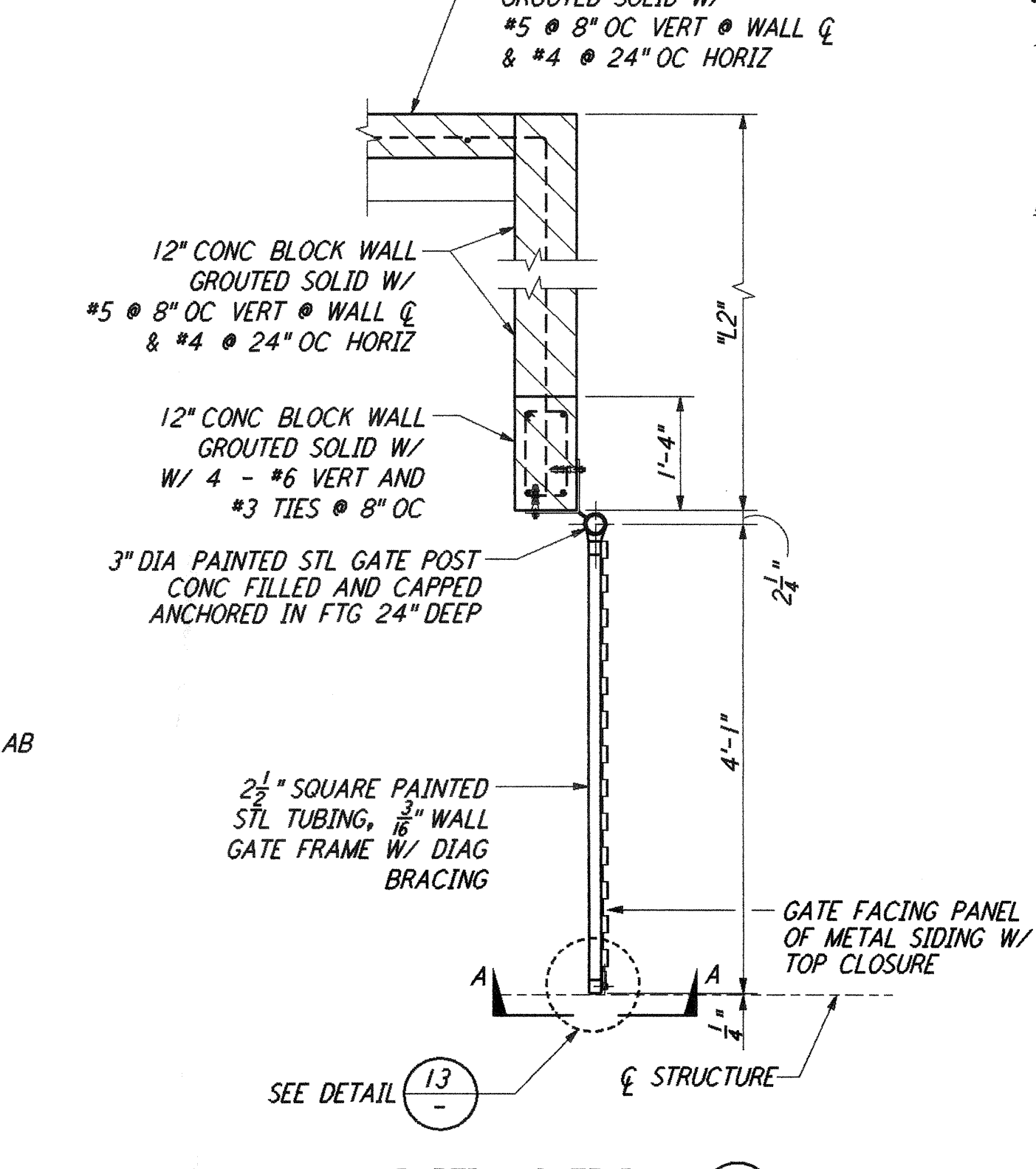
PARTIAL WALL PLAN (12)



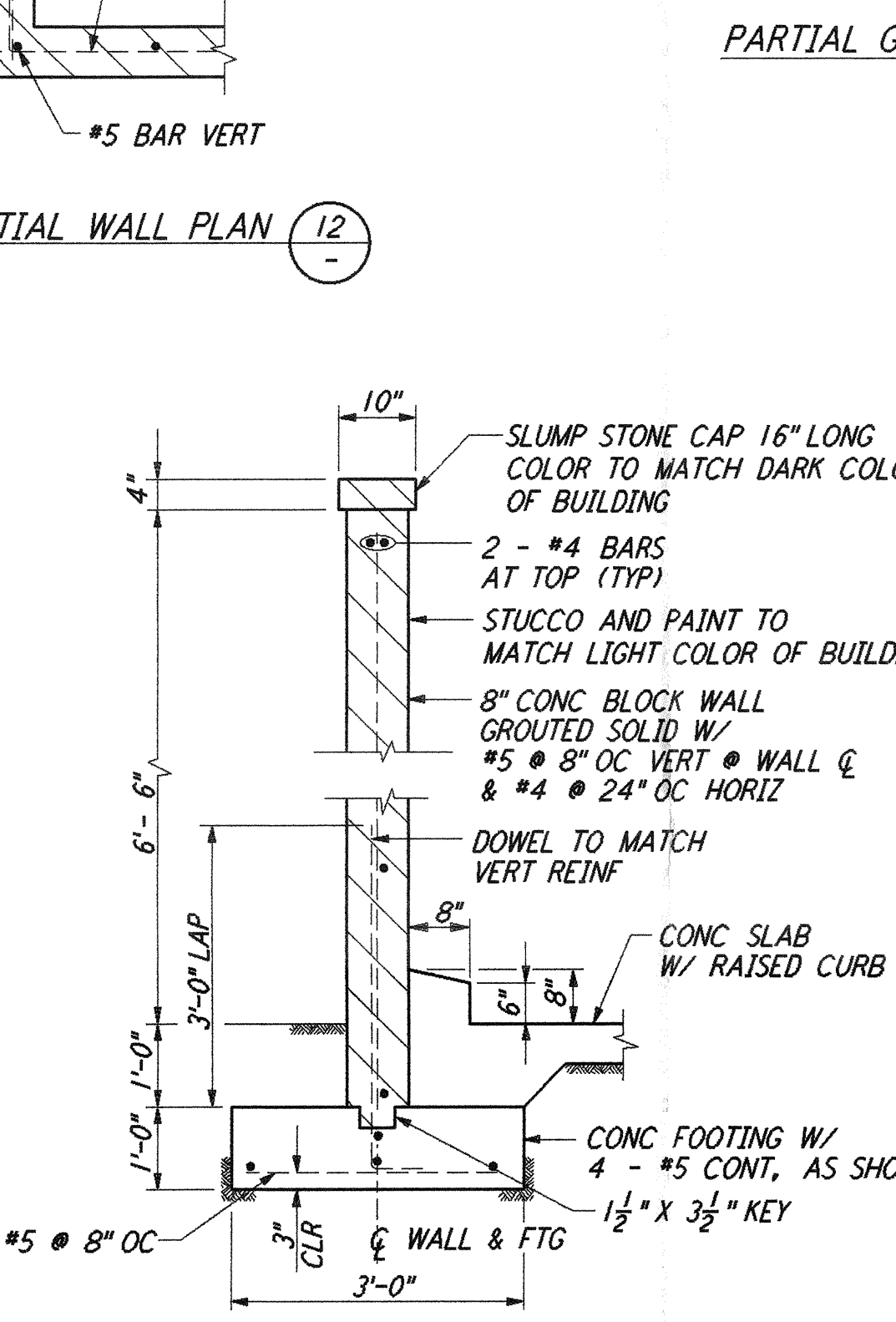
BLOCK WALL ENCLOSURE DIMENSIONS



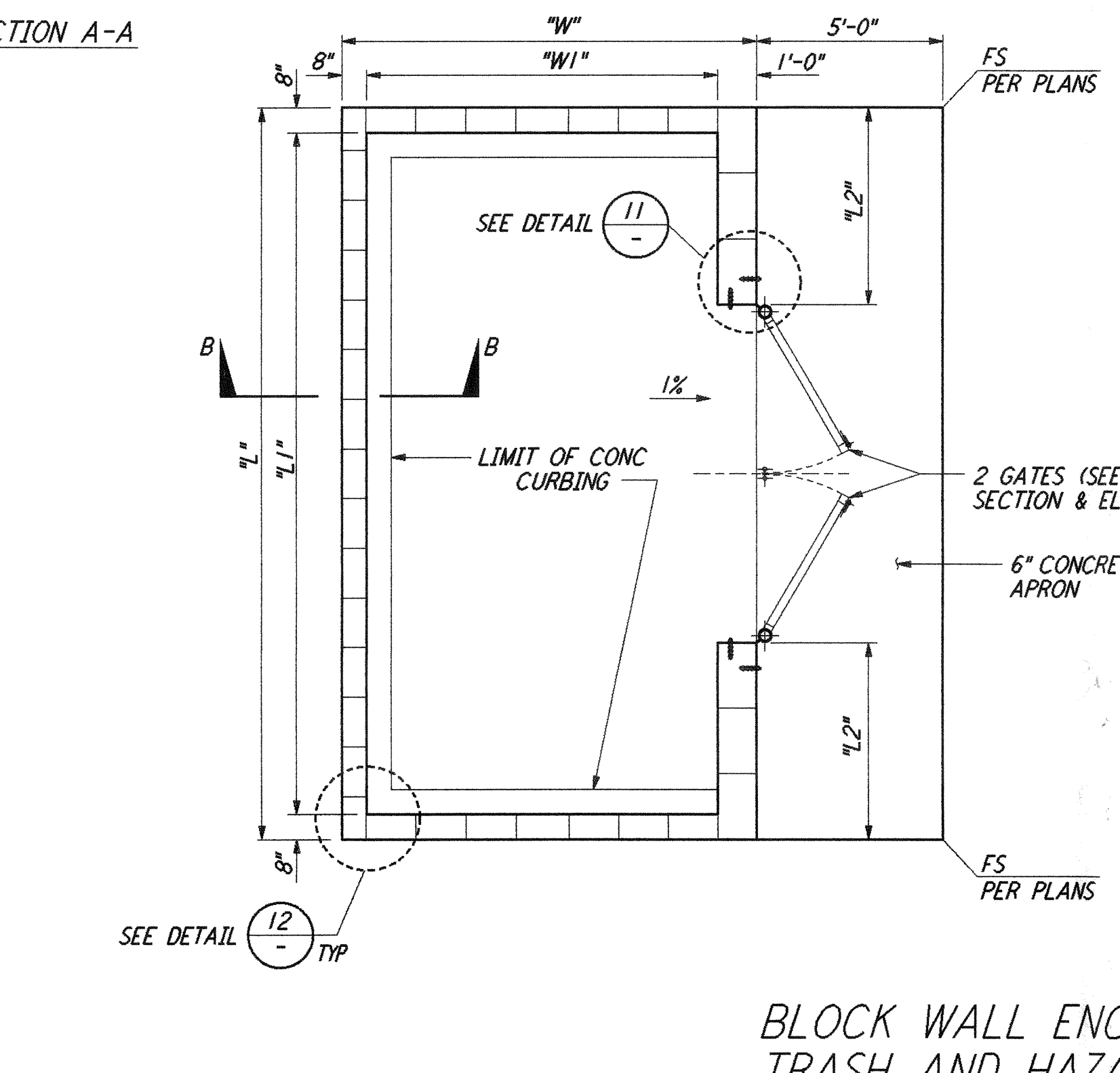
GATE ELEVATION



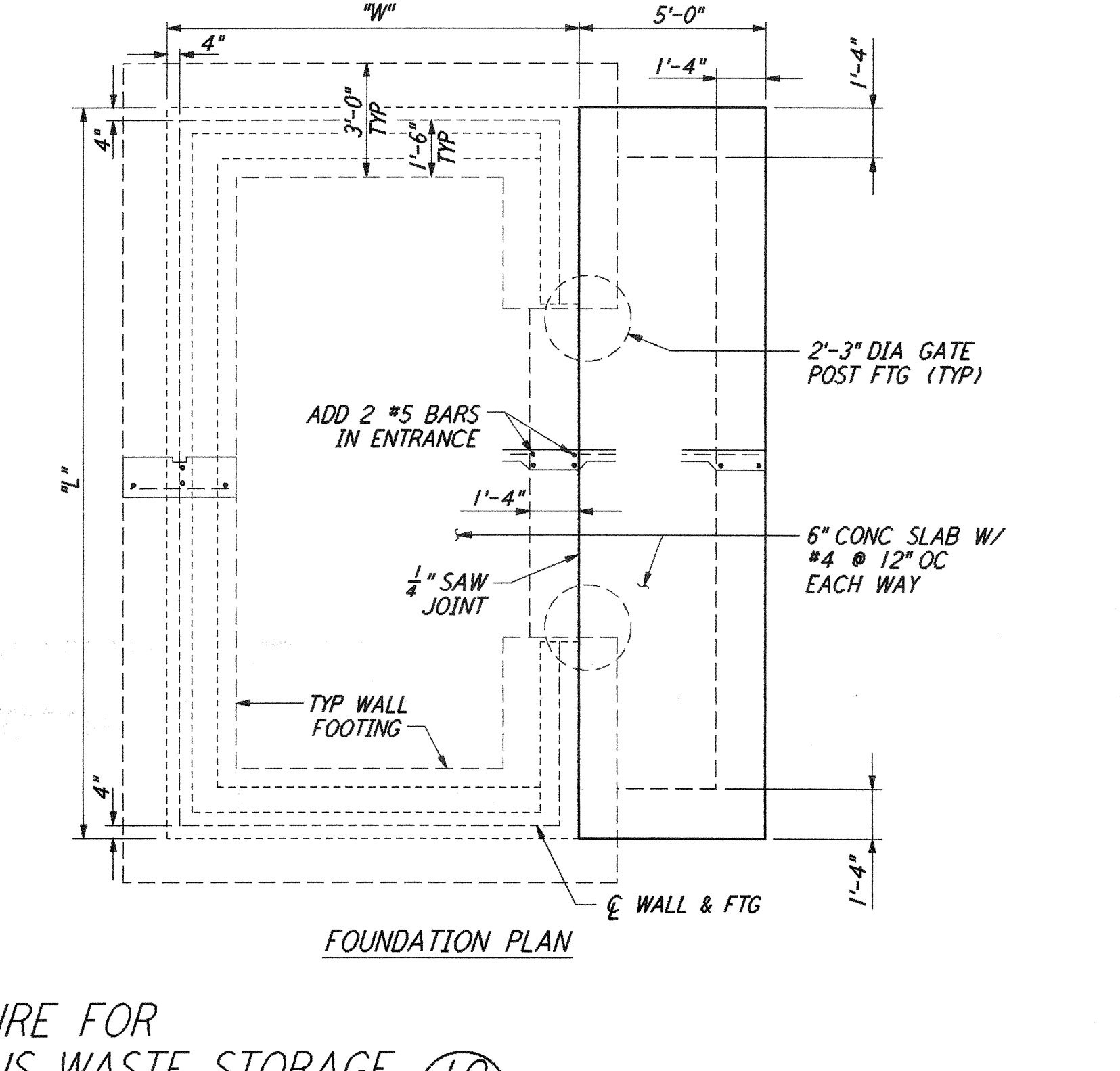
PARTIAL GATE PLAN (11)



SECTION B-B



FOUNDATION PLAN



BLOCK WALL ENCLOSURE FOR TRASH AND HAZARDOUS WASTE STORAGE (10) REF LA-C-051, LA-C-005
 NOT TO SCALE

This document and the design it covers are the property of PARSONS. They are loaned only with the borrower's expressed written agreement that they will not be reproduced, copied, loaned, exhibited, or used in any other way, except by written consent from PARSONS to the borrower.

This document and the design it covers are the property of PARSONS. They are loaned only with the borrower's expressed written agreement that they will not be reproduced, copied, loaned, exhibited, or used in any other way, except by written consent from PARSONS to the borrower.

NO.	DATE	BY	CHKD	ENGR	PROJ	DESCRIPTION
B	7/24/96	WRB	ML	JB	TDM	ISSUED FOR BID
A	6/14/96	WRB	ML	JB	TDM	FINAL DESIGN REVIEW

NO.	DATE	BY	CHKD	ENGR	PROJ	DESCRIPTION
B	7/24/96	WRB	ML	JB	TDM	ISSUED FOR BID
A	6/14/96	WRB	ML	JB	TDM	FINAL DESIGN REVIEW

DRAWN	WRB
CHECKED	
ENGINEER	
PROJ	

SCALE	AS NOTED
CONTRACT NUMBER	PP150969
PROJECT NUMBER	8094
SHEET NUMBER	LA-C-051
REVISIONS	

PARSONS
 100 WEST WALNUT STREET
 PASADENA, CALIFORNIA

LIGO
 CALIFORNIA INSTITUTE OF TECHNOLOGY
 MASSACHUSETTS INSTITUTE OF TECHNOLOGY

LASER INTERFEROMETER
 GRAVITATIONAL-WAVE OBSERVATORY
 SITE NO. 2 - LIVINGSTON, LOUISIANA

CIVIL SITEWORK DETAILS SHEET 1

LA-C-051

LIGO-D960861-B-0
 LIGOLAF3.BDR