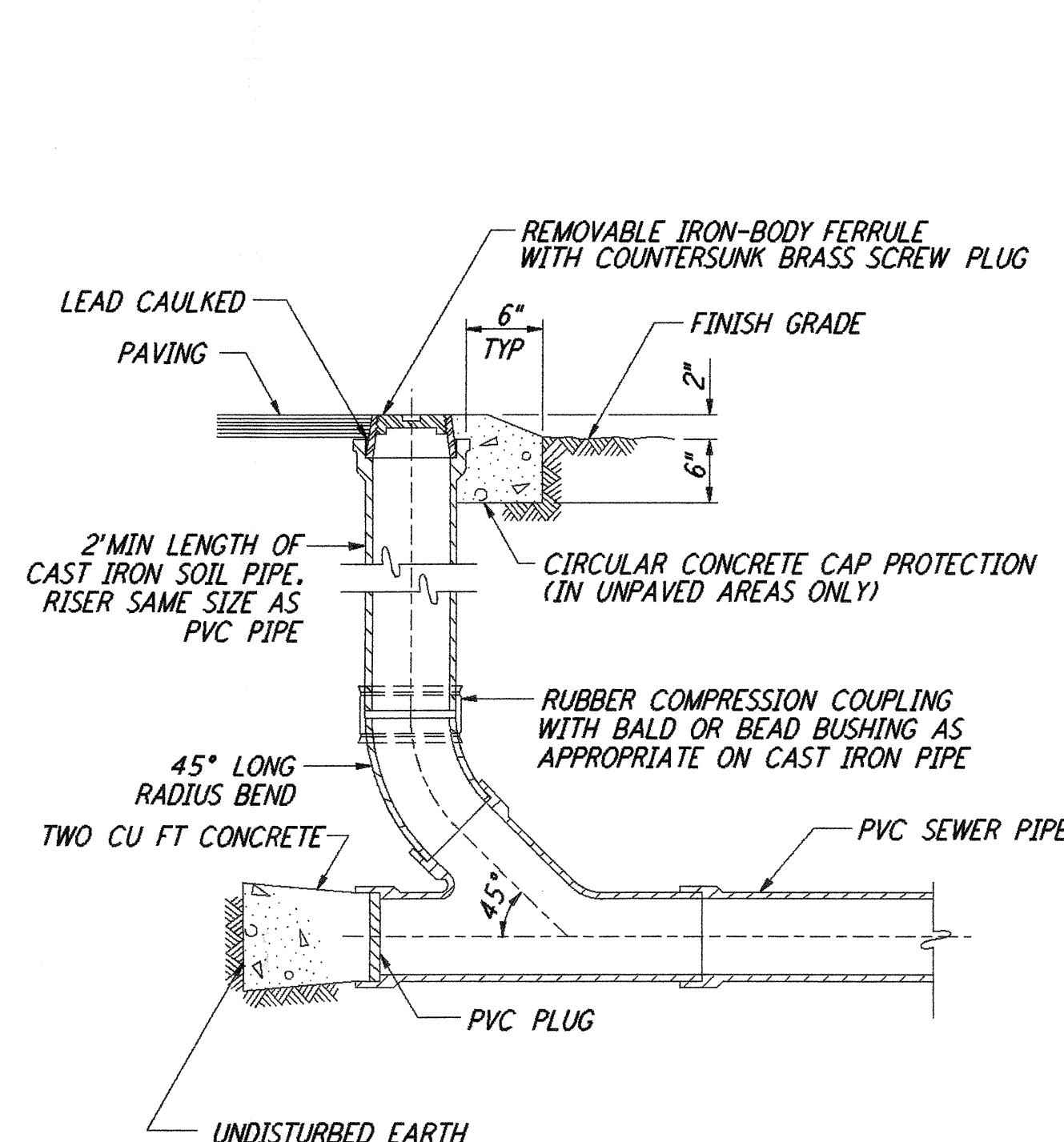
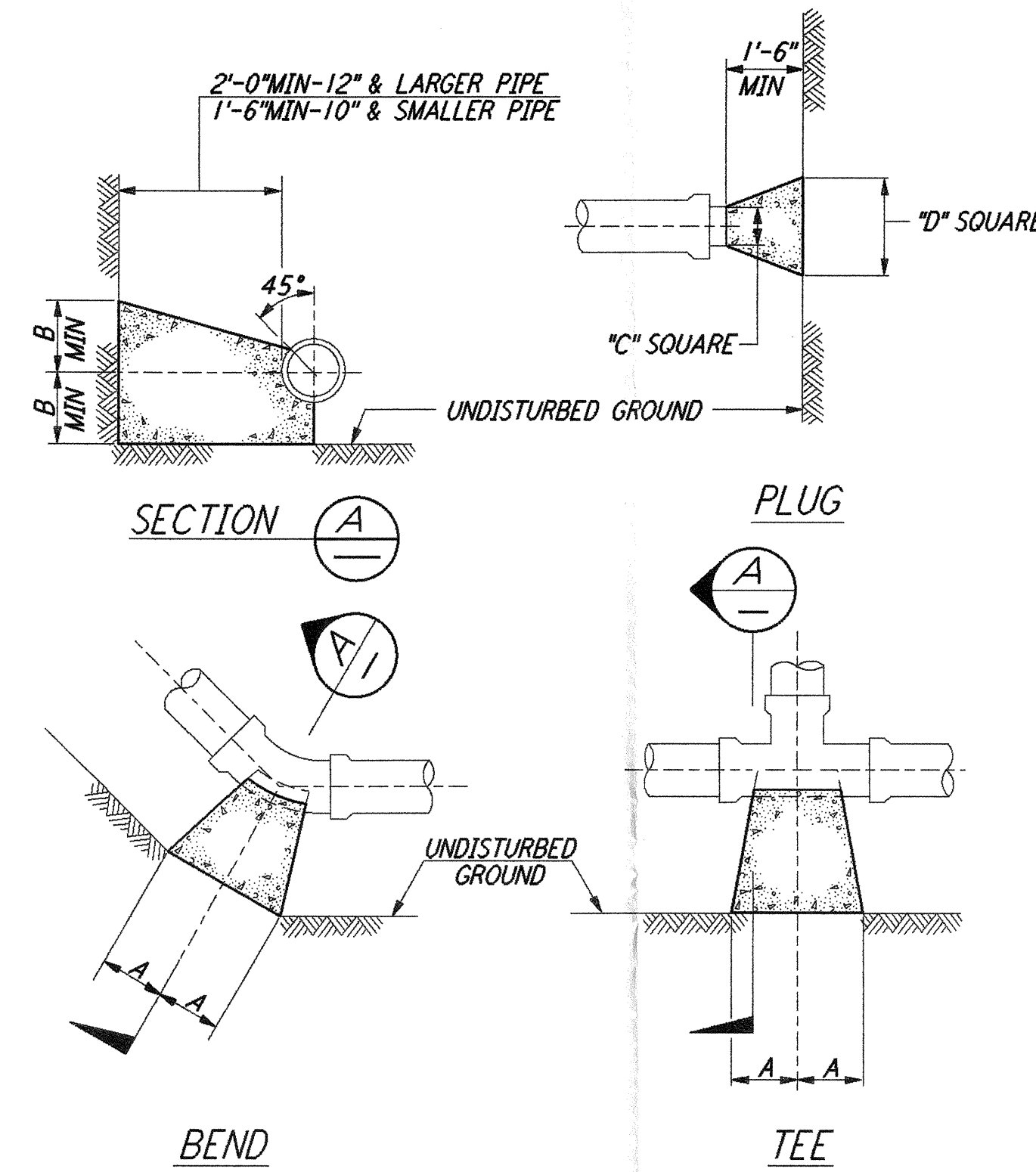


**VALVE BOX** (1) REF  
 NOT TO SCALE LA-C-055 LA-C-009  
 NOTE: VALVE SIZE 12" MAXIMUM LA-C-010



**SANITARY SEWER CLEANOUT** (2) REF  
 NOT TO SCALE LA-C-055 LA-C-009  
 LA-C-010

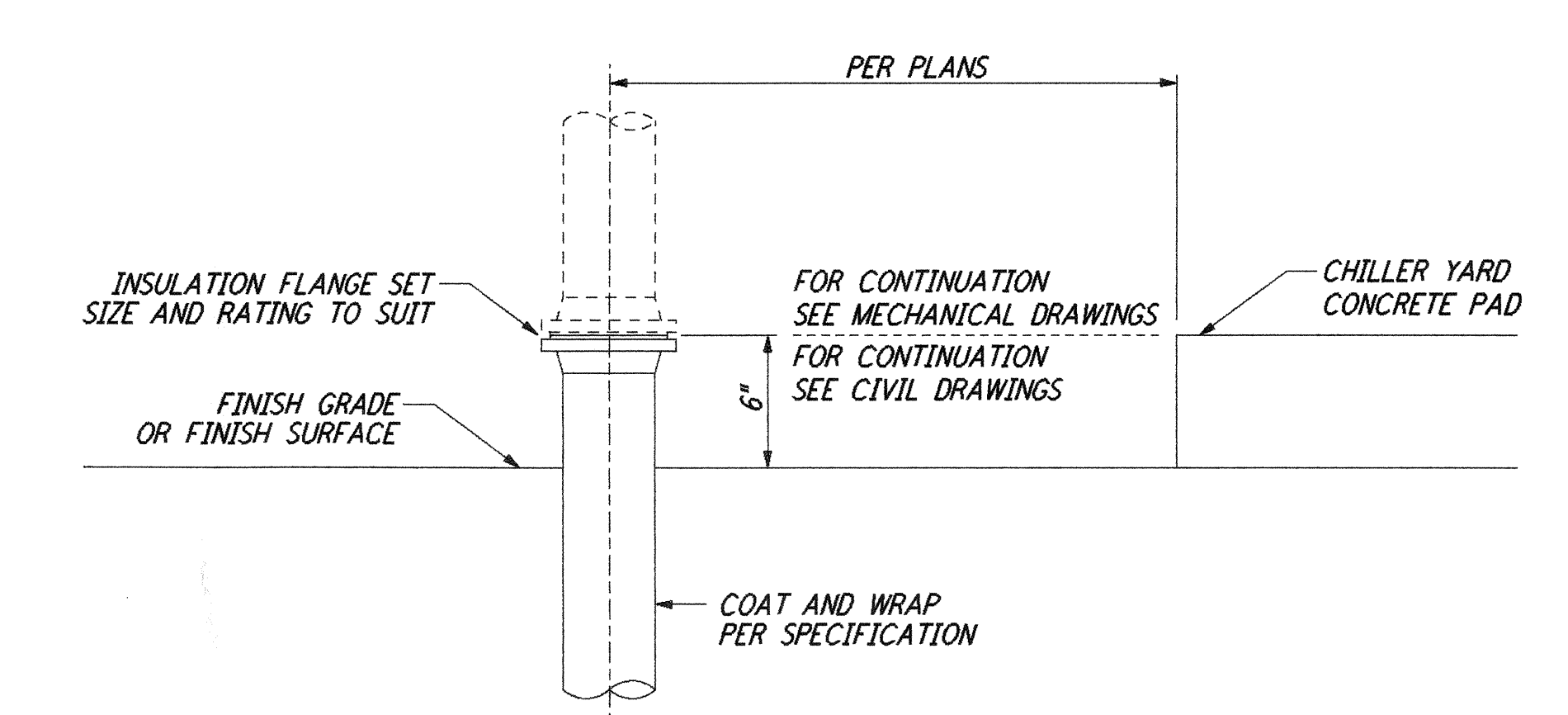


TYPE	SIZE	90° BEND		45° BEND		22½° BEND		TEE		PLUG	
		A	B	A	B	A	B	A	B	C	D
TYPE I 4000 PSF FILL	4"	6"	8"	4"	6"	3"	6"	6"	6"	8"	13"
	6"	8"	10"	6"	8"	5"	8"	8"	8"	10"	15"
	8"	12"	12"	8"	10"	5"	9"	9"	12"	12"	20"
	10"	16"	14"	10"	12"	6"	10"	11"	14"	14"	25"
	12"	19"	16"	12"	14"	8"	11"	14"	16"	16"	30"
TYPE II 2000 PSF FILL	4"	14"	8"	7"	8"	4"	6"	8"	10"	8"	19"
	6"	16"	10"	9"	10"	6"	8"	10"	12"	10"	21"
	8"	22"	13"	12"	13"	8"	10"	13"	16"	12"	20"
	10"	26"	17"	14"	17"	10"	13"	16"	20"	14"	36"
	12"	29"	21"	16"	21"	11"	16"	18"	24"	16"	41"
14"	35"	24"	19"	24"	12"	20"	22"	27"	18"	48"	

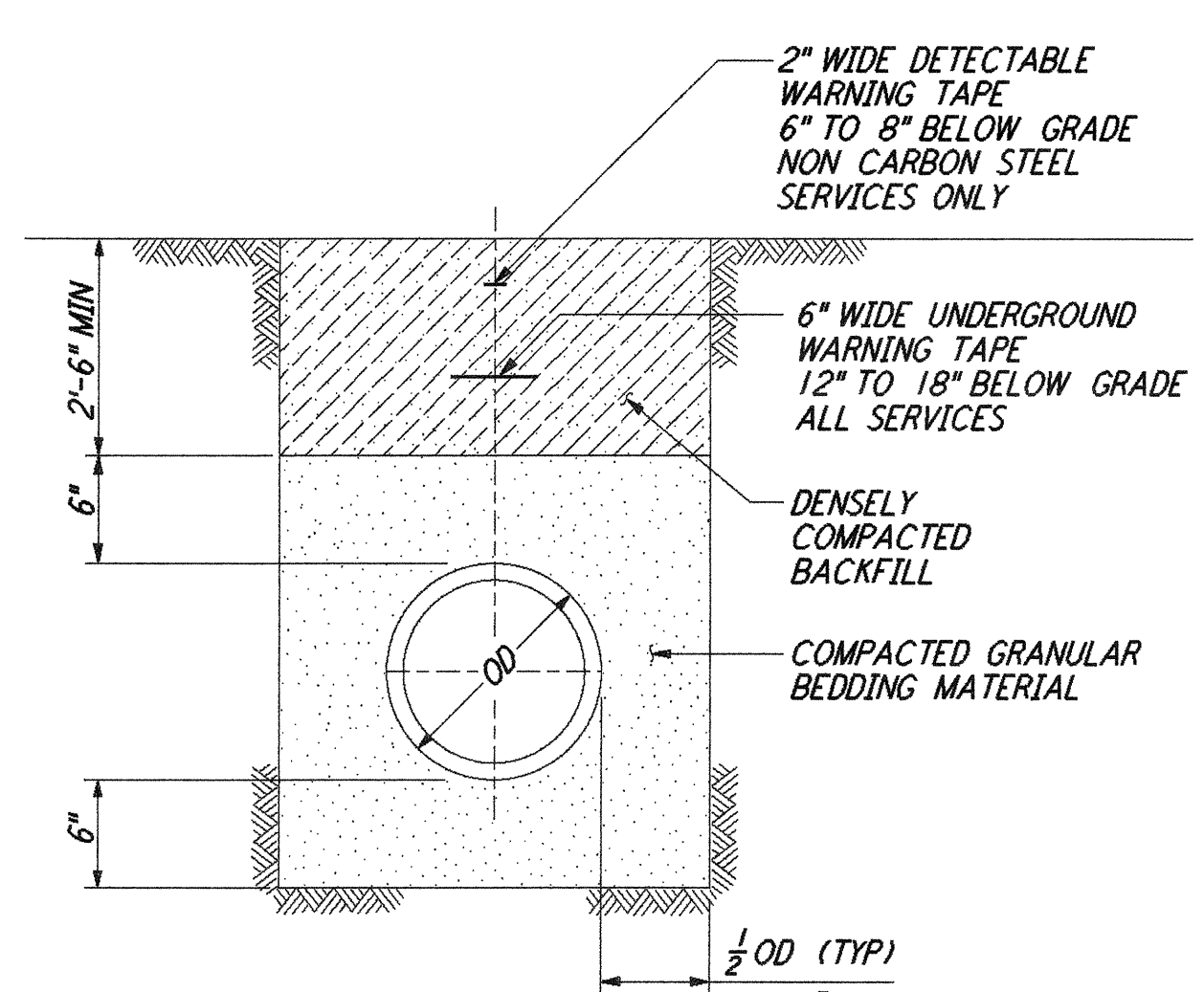
NOTES:  
 1. BASED ON 150 PSI STATIC PRESSURE PLUS AWWA WATER HAMMER.  
 2. ALL OTHER CONDITIONS MUST BE CALCULATED.

**THRUST BLOCK** (3) REF  
 NOT TO SCALE LA-C-055 LA-C-009  
 LA-C-010

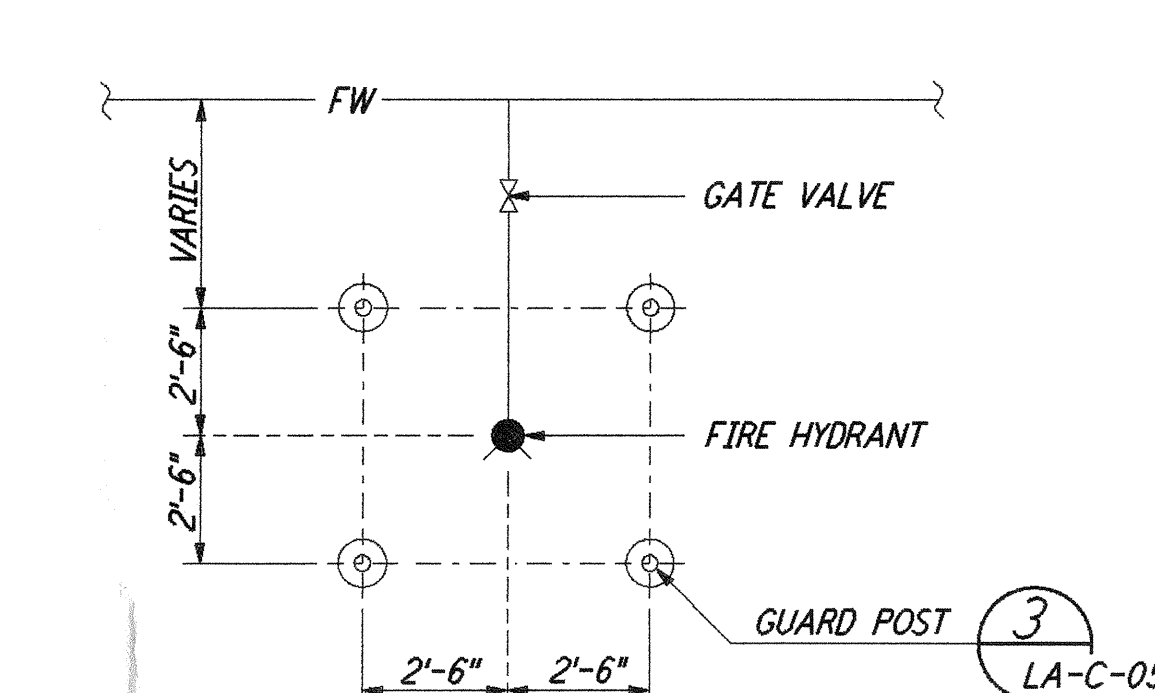
NOTES:  
 1. SEE SHEET LA-C-002 FOR GENERAL NOTES, LEGEND AND ABBREVIATIONS.



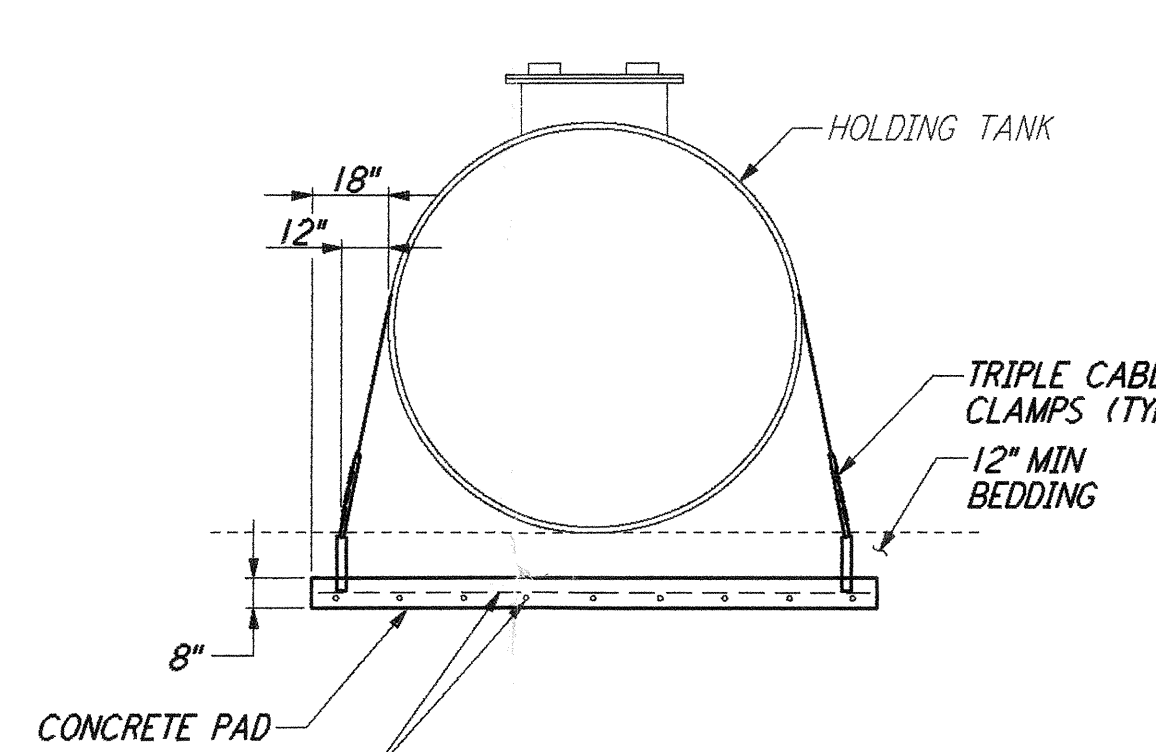
**PIPE CONNECTION** (4) REF  
 (UNDERGROUND TO OVERHEAD) NOT TO SCALE LA-C-055 LA-C-009  
 LA-C-010 LA-C-027 LA-C-047



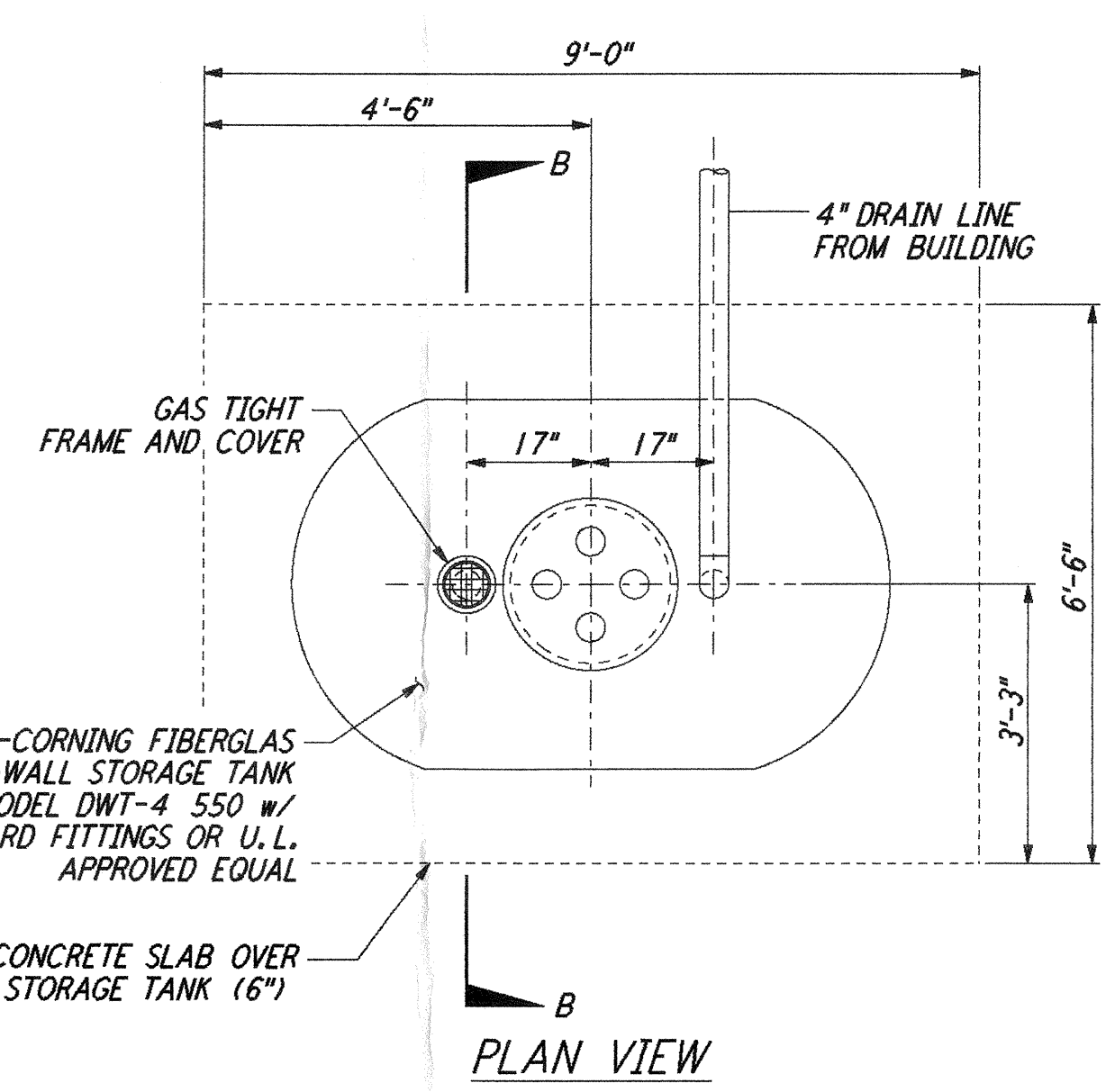
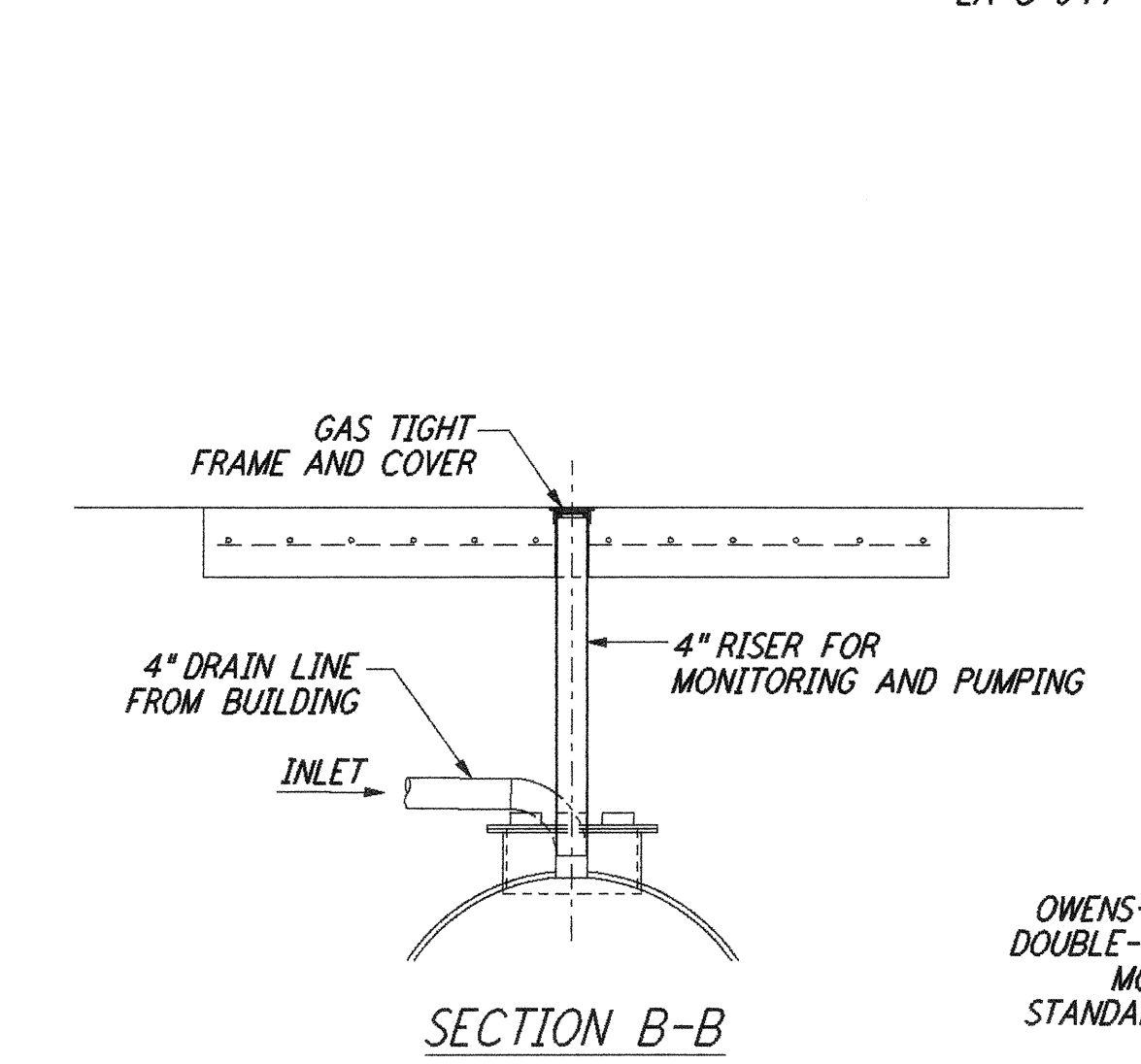
**TRENCH BEDDING** (5) REF  
 NOT TO SCALE LA-C-055 LA-C-009  
 LA-C-010 LA-C-027 LA-C-047



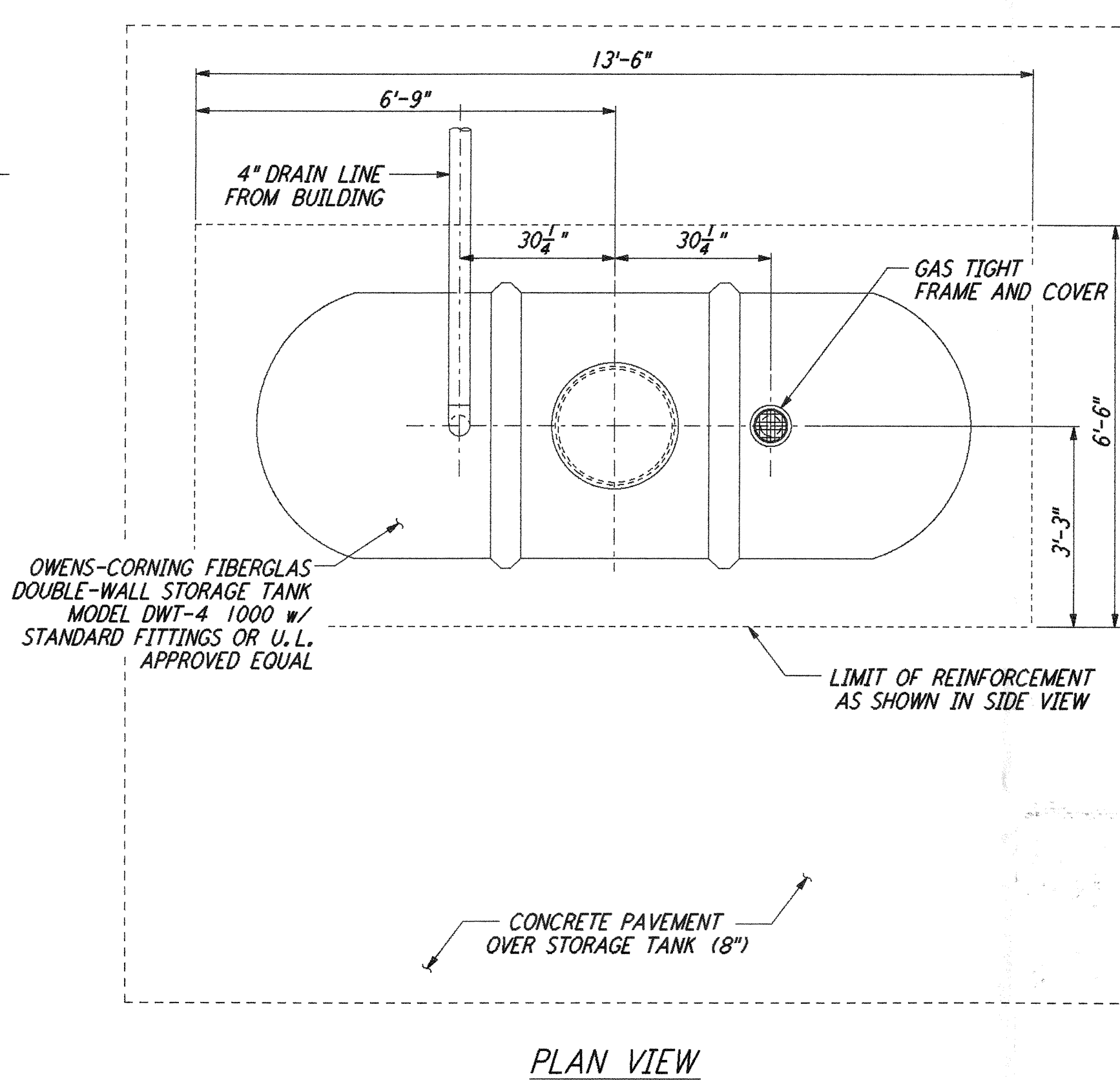
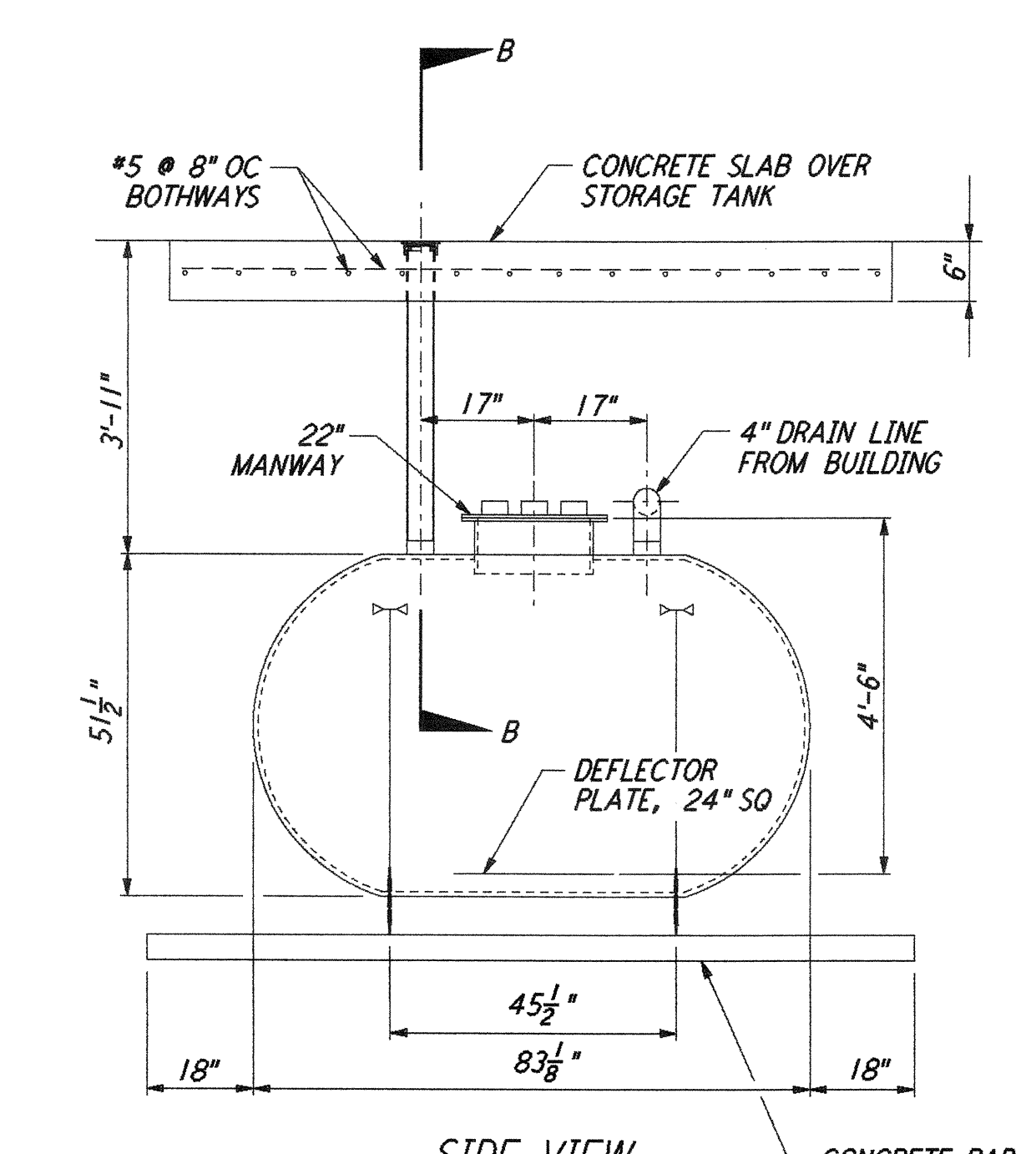
**GUARD POST LOCATIONS** (6) REF  
 (FIRE HYDRANT) NOT TO SCALE LA-C-055 LA-C-009  
 LA-C-010



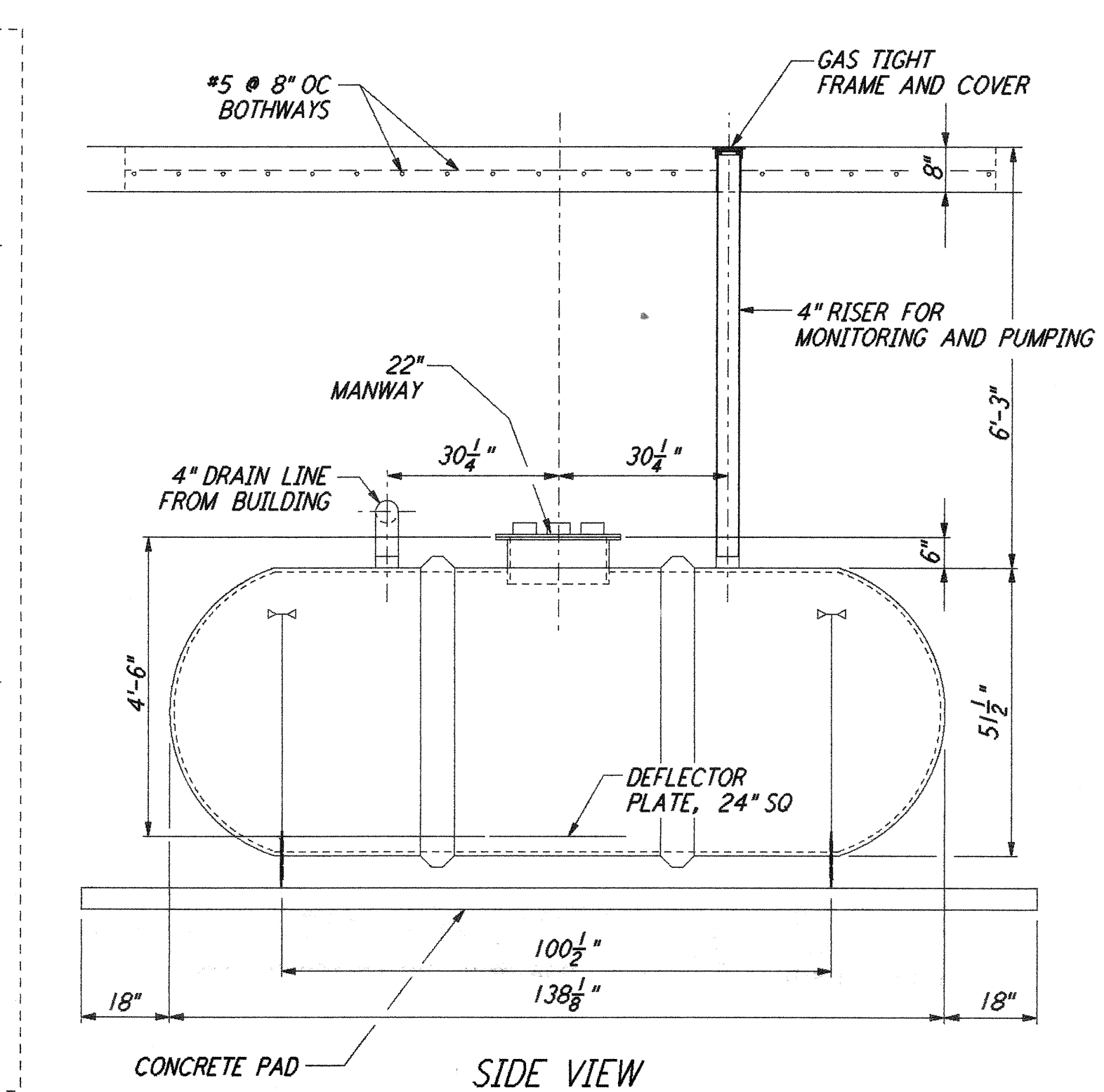
**SIDE ELEVATION CONCRETE ANCHOR PAD FOR HOLDING TANKS - TYPICAL**



**DOUBLE-WALL HOLDING TANK 500 GALLONS** (7) REF  
 NOT TO SCALE LA-C-055 LA-C-027  
 LA-C-047



**DOUBLE-WALL HOLDING TANK 1000 GALLONS** (8) REF  
 NOT TO SCALE LA-C-055 LA-C-010



This document and the design it covers are the property of PARSONS. They are loaned only with the borrower's expressed written agreement that they will not be reproduced, copied, loaned, exhibited, or used in any other way, except by written consent from PARSONS to the borrower.

NO.	DATE	BY	CHKD	ENGR	PROJ	DESCRIPTION
B	7/24/96	WRB	ML	JB	TDW	ISSUED FOR BID
A	6/14/96	WRB	ML	JB	TDW	FINAL DESIGN REVIEW

DRAWN	WRB
CHECKED	
ENGINEER	
PROJ	

**PARSONS**  
 100 WEST WALNUT STREET  
 PASADENA, CALIFORNIA

**LIGO**  
 CALIFORNIA INSTITUTE OF TECHNOLOGY  
 MASSACHUSETTS INSTITUTE OF TECHNOLOGY

LASER INTERFEROMETER  
 GRAVITATIONAL-WAVE OBSERVATORY  
 SITE NO. 2 - LIVINGSTON, LOUISIANA

TITLE	SCALE	CONTRACT NUMBER	PROJECT NUMBER
CIVIL UTILITY DETAILS	AS NOTED	PP150969	8094
SHEET NUMBER		REVISIONS	
LA-C-055		A	