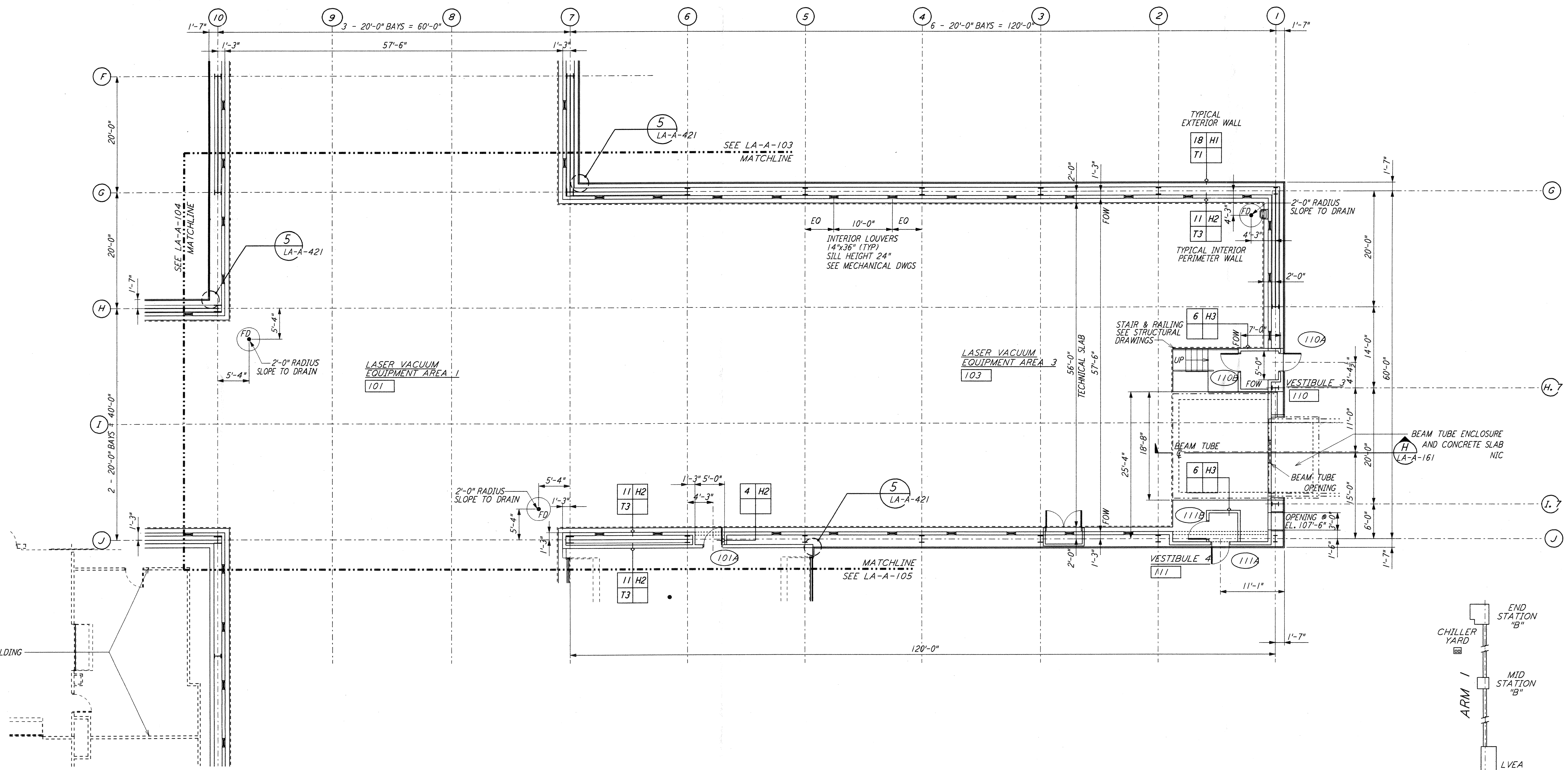
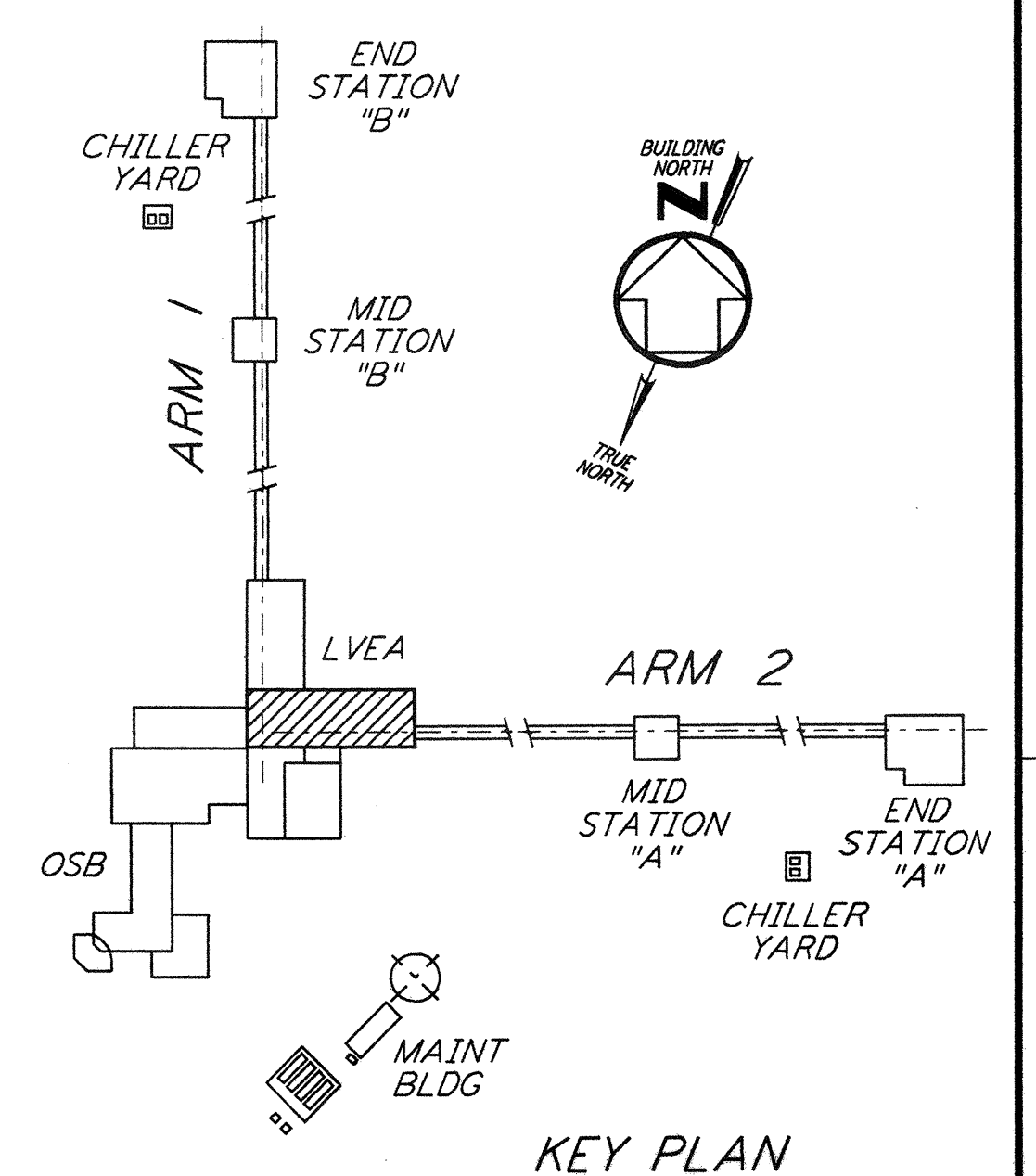


not be reproduced, copied, loaned, exhibited, or used in any other way, except by written consent from PARSONS to the borrower.

This document and the design it covers are the property of PARSONS. They are loaned only with the borrower's expressed written agreement that they will



LINE OF OPERATIONAL SUPPORT BUILDING  
 SEE SHEET LA-A-109



0 8 16 24 32FT  
 1/8" = 1'-0"  
 DATUM POINT EL +100.00 = 61.44' (LVEA)  
 DATUM POINT EL +100.00 = 61.44' (OSB)

KEY PLAN  
**LIGO-D960868-01-0**

NO.	DATE	BY	CHKD	ENGR	PROJ	DESCRIPTION
1	08-07-98	SJM	CKT	MLL	MMW	ISSUED FOR AS-BUILT

ISSUED FOR CONSTRUCTION	
DRAWN	CKT 11-15-96
CHECKED	TB 11-15-96
ENGINEER	SF 11-15-96
PROJ	TDM 11-15-96

**AS-BUILT DRAWINGS**

100 WEST WALNUT STREET  
 PASADENA, CALIFORNIA

CALIFORNIA INSTITUTE OF TECHNOLOGY  
 MASSACHUSETTS INSTITUTE OF TECHNOLOGY

LASER INTERFEROMETER  
 GRAVITATIONAL-WAVE OBSERVATORY  
 SITE NO. 2 - LIVINGSTON, LOUISIANA

TITLE	SCALE	CONTRACT NUMBER	PROJECT NUMBER
ARCHITECTURAL CORNER STATION LVEA PARTIAL FLOOR PLAN SHEET 1	AS NOTED	PP150969	8094
SHEET NUMBER	REVISIONS		
<b>LA-A-102</b>	▲		