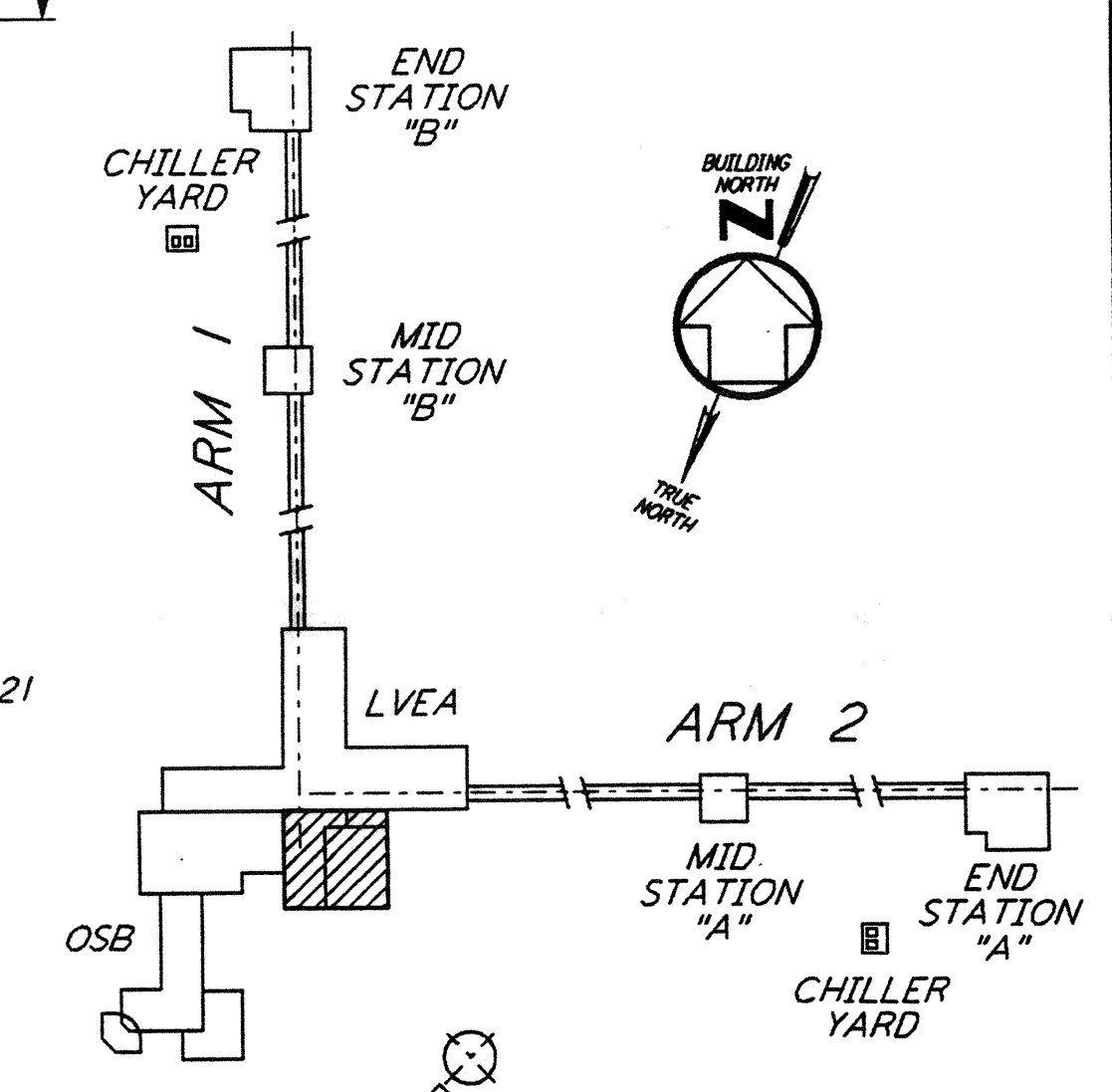
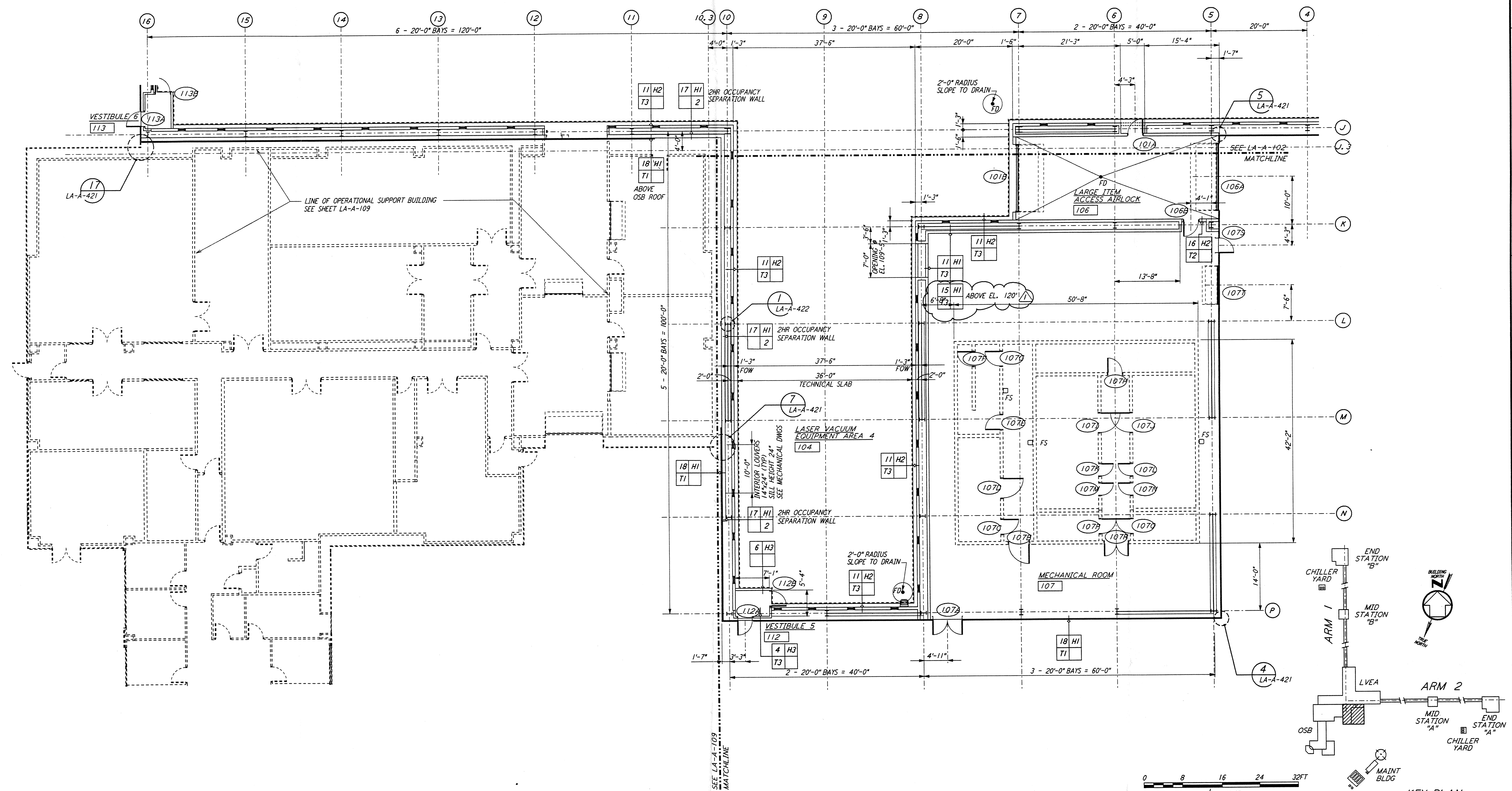


NOTE:  
 1. SEE SPECIFICATIONS FOR ADDITIONAL INFORMATION AND SCHEDULES  
 2. PROVIDE CONTROL JOINTS @ 40'-0" O.C. MAX THROUGHOUT LVEA AREAS - AT GRID LINES AND WHERE OTHERWISE INDICATED.

not be reproduced, copied, loaned, exhibited, or used in any other way, except by written consent from PARSONS to the borrower.

This document and the design it covers are the property of PARSONS. They are loaned only with the borrower's expressed written agreement that they will



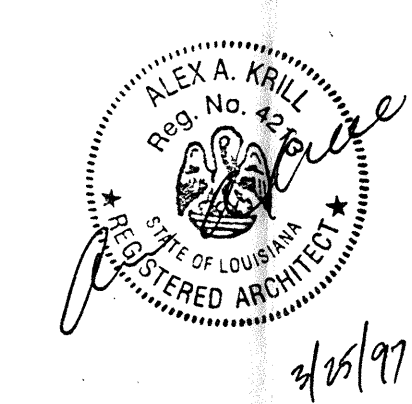
0 8 16 24 32 FT  
 1/8" = 1'-0"  
 DATUM POINT EL +100.00 = 61.44' (LVEA)  
 DATUM POINT EL +100.00 = 61.44' (OSB)

LIGO-D960871-01-0

KEY PLAN

NO.	DATE	BY	CHKD	ENGR	PROJ	DESCRIPTION
1	2-28-97	CKT	TB	AK	TDM	CORNER STATION VSEA PARTITION

ISSUED FOR CONSTRUCTION		
DRAWN	CKT	11-15-96
CHECKED	TB	11-15-96
ENGINEER	SF	11-15-96
PROJ	MDW	11-15-96



**PARSONS**  
 100 WEST WALNUT STREET  
 PASADENA, CALIFORNIA

**LIGO**  
 CALIFORNIA INSTITUTE OF TECHNOLOGY  
 MASSACHUSETTS INSTITUTE OF TECHNOLOGY

LASER INTERFEROMETER  
 GRAVITATIONAL-WAVE OBSERVATORY  
 SITE NO. 2 - LIVINGSTON, LOUISIANA

TITLE	SCALE	CONTRACT NUMBER	PROJECT NUMBER
ARCHITECTURAL CORNER STATION LVEA PARTIAL FLOOR PLAN SHEET 4	AS NOTED	PP150969	8094
SHEET NUMBER	REVISIONS		
<b>LA-A-105</b>			