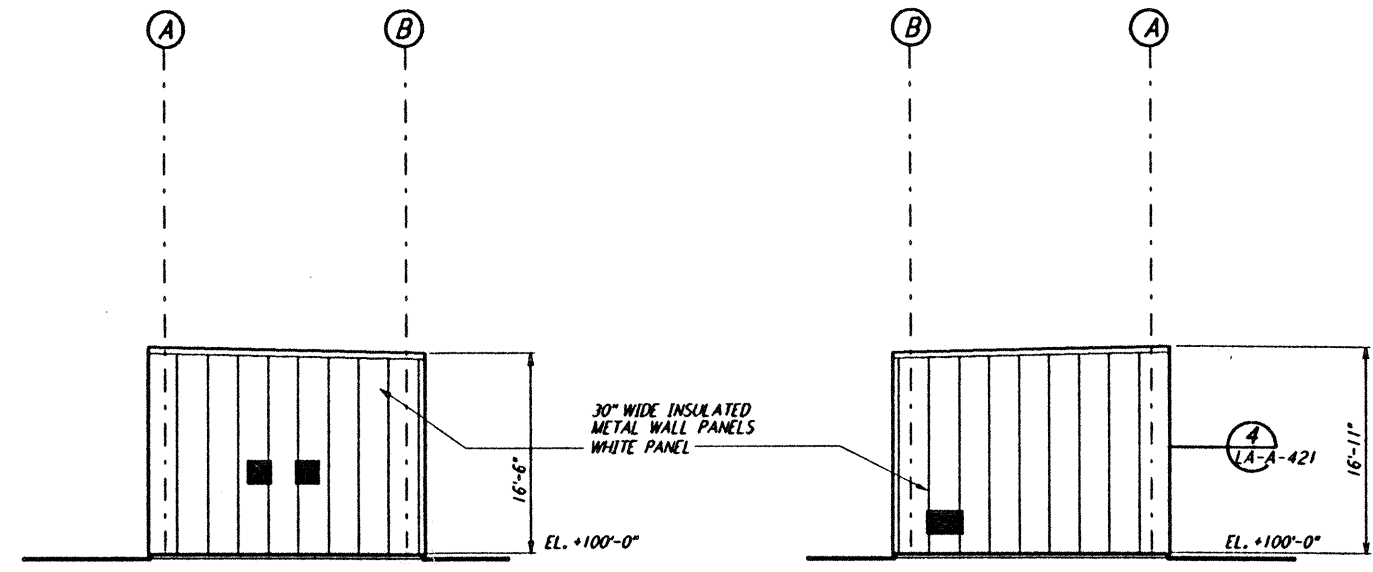
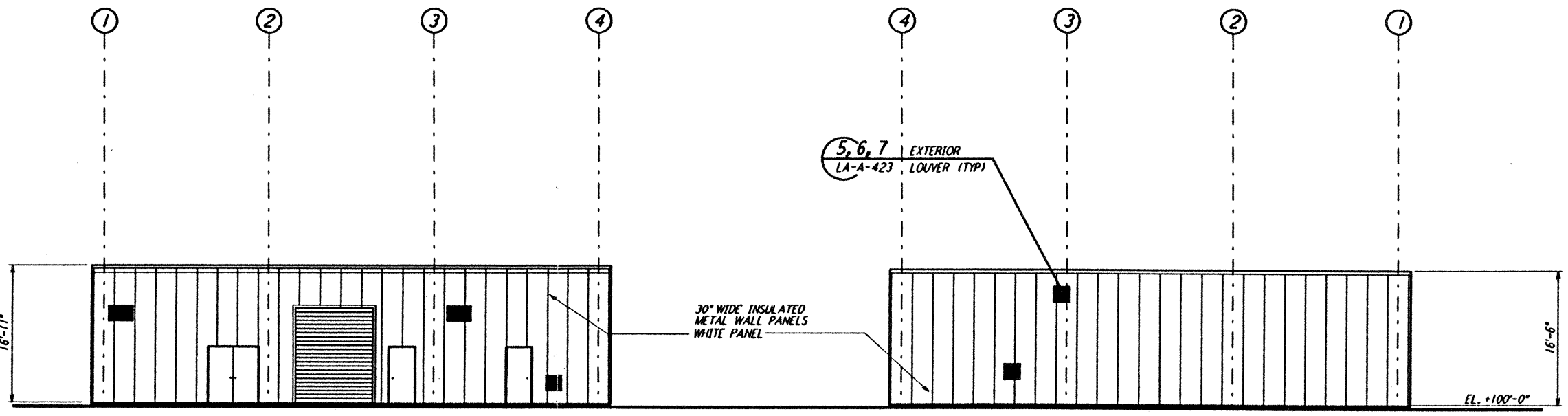


This document and the design it covers are the property of PARSONS. They are loaned only with the borrower's expressed written agreement that they will not be reproduced, copied, loaned, exhibited, or used in any other way, except by written consent from PARSONS to the borrower.



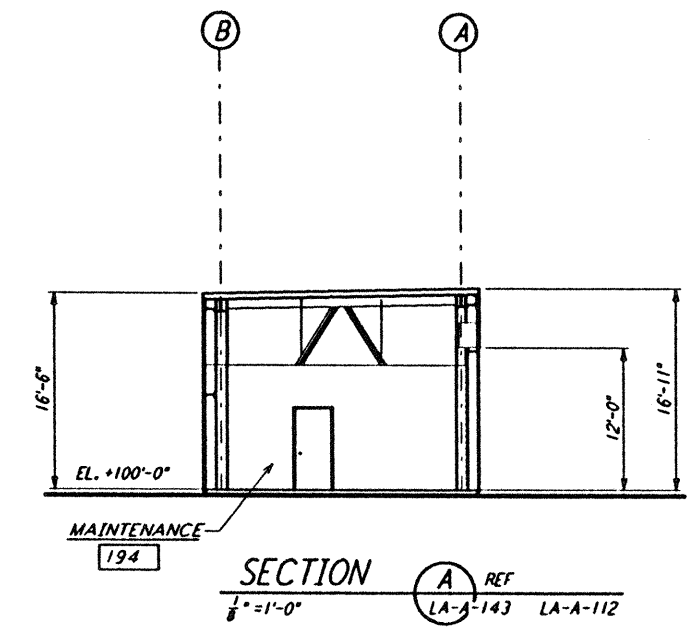
ELEVATION A REF  
 LA-A-143 LA-A-112  
 1/8" = 1'-0"

ELEVATION C REF  
 LA-A-143 LA-A-112  
 1/8" = 1'-0"

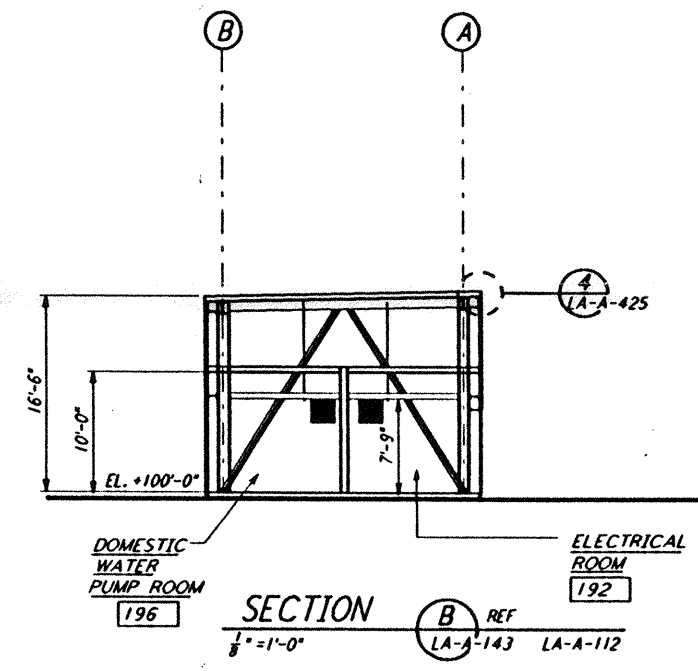


ELEVATION B REF  
 LA-A-143 LA-A-112  
 1/8" = 1'-0"

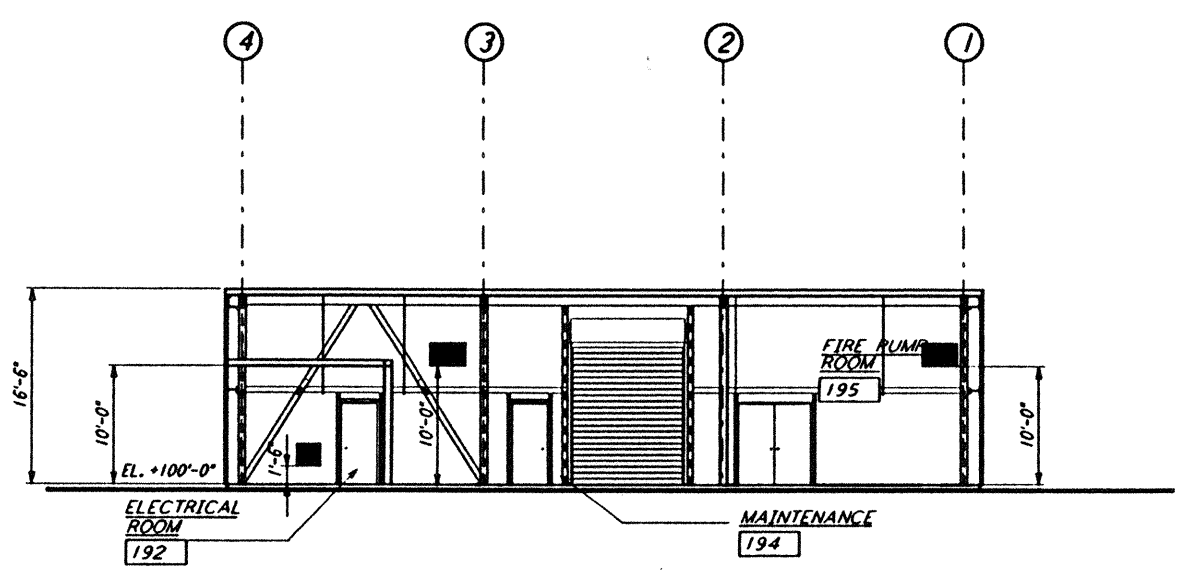
ELEVATION D REF  
 LA-A-143 LA-A-112  
 1/8" = 1'-0"



SECTION A REF  
 LA-A-143 LA-A-112  
 1/8" = 1'-0"



SECTION B REF  
 LA-A-143 LA-A-112  
 1/8" = 1'-0"



SECTION C REF  
 LA-A-143 LA-A-112  
 1/8" = 1'-0"

DATUM POINT EL. +100.00 = 63.12' ( MAINTENANCE BLDG )  
 0 8 16 24 32 FT  
 1/8" = 1'-0"

NO.	DATE	BY	CHKD	ENGR	PROJ	DESCRIPTION
C	7-24-96	CKT	TB	BK	TDM	ISSUED FOR BID
B	6-14-96	CKT	BK	SF	TDM	FINAL DESIGN REVIEW
A	10/31/95		SF	SF	TDM	PRELIMINARY DESIGN REVIEW

DRAWN	CKT
CHECKED	
ENGINEER	
PROJ	

**PARSONS**  
 100 WEST WALNUT STREET  
 PASADENA, CALIFORNIA

**LIGO**  
 CALIFORNIA INSTITUTE OF TECHNOLOGY  
 MASSACHUSETTS INSTITUTE OF TECHNOLOGY

LASER INTERFEROMETER  
 GRAVITATIONAL-WAVE OBSERVATORY  
 SITE NO. 2 - LIVINGSTON, LOUISIANA

ARCHITECTURAL  
 CORNER STATION  
 MAINTENANCE BUILDING  
 ELEVATIONS/SECTIONS

CONTRACT NUMBER: PPI50969  
 PROJECT NUMBER: 8094  
**LA-A-143**

LIGO-D960885-C-0

LIGOLAF 3.BDR

Tue Jul 23 09:53:47 1996 s3-v18b2 J:\PLOTS\QUEUES\18B2\AR143.PRF