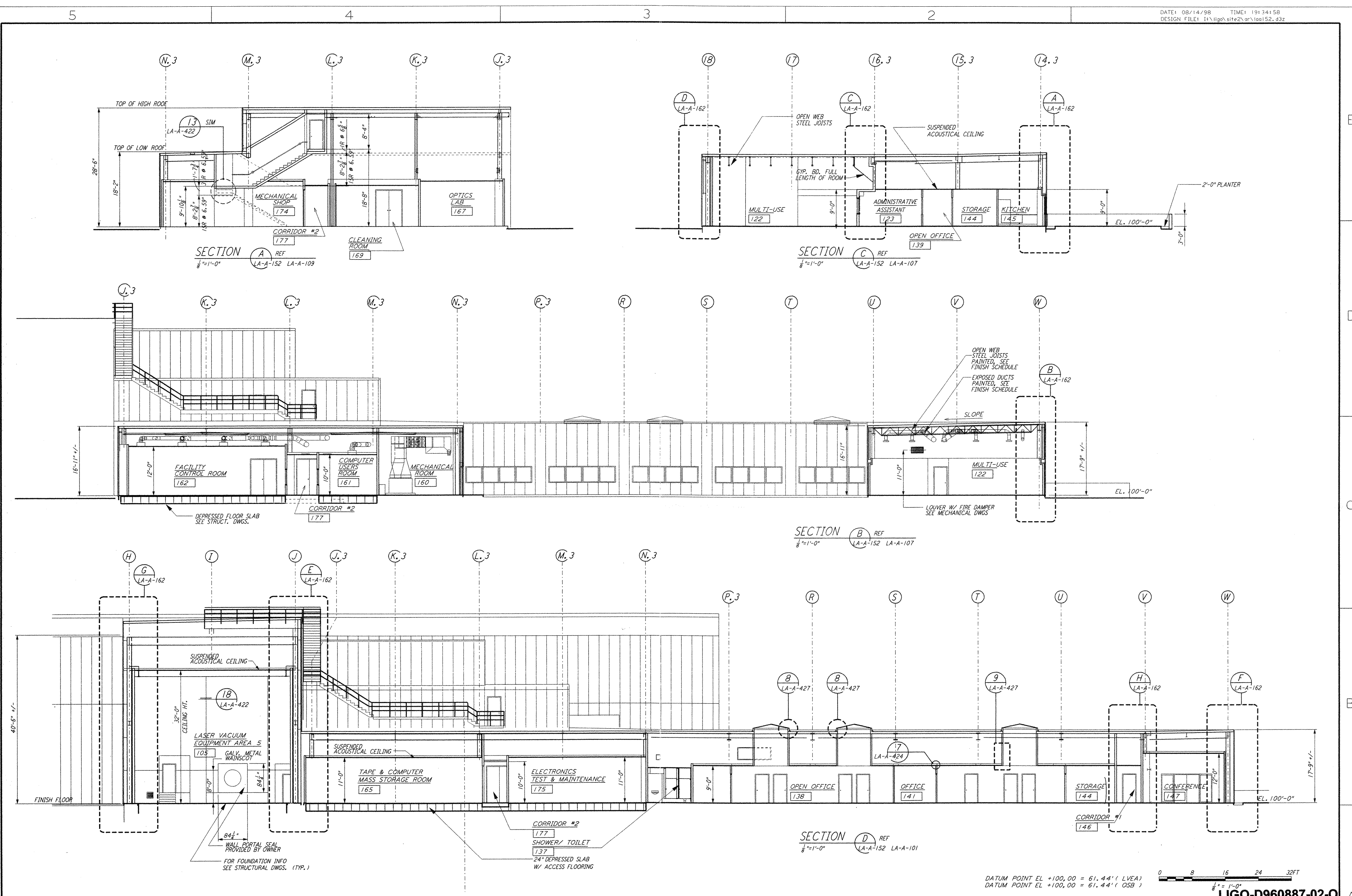


This document and the design it covers are the property of PARSONS. They are loaned only with the borrower's expressed written agreement that they will not be reproduced, copied, loaned, exhibited, or used in any other way, except by written consent from PARSONS to the borrower.



DATUM POINT EL +100.00 = 61.44' (LVEA)  
 DATUM POINT EL +100.00 = 61.44' (OSB)  
 0 8 16 24 32 FT  
 1/8" = 1'-0"

**LIGO-D960887-02-0**

NO.	DATE	BY	CHKD	ENGR	PROJ	DESCRIPTION
2	08-07-98	SJM	LCT	AK	TDM	ISSUED FOR AS-BUILT
1	2-28-97	CKT	TB	AK	TDM	OSB REVISION

ISSUED FOR CONSTRUCTION	
DRAWN	CKT/DJS 11-15-96
CHECKED	TB 11-15-96
ENGINEER	SF 11-15-96
PROJ	MDW 11-15-96

**AS-BUILT DRAWINGS**

**PARSONS**  
 100 WEST WALNUT STREET  
 PASADENA, CALIFORNIA

**LIGO**  
 CALIFORNIA INSTITUTE OF TECHNOLOGY  
 MASSACHUSETTS INSTITUTE OF TECHNOLOGY

LASER INTERFEROMETER  
 GRAVITATIONAL-WAVE OBSERVATORY  
 SITE NO. 2 - LIVINGSTON, LOUISIANA

ARCHITECTURAL  
 CORNER STATION  
 LVEA & OSB SECTIONS  
 SHEET 2

AS NOTED PPI50969 8094  
**LA-A-152**

7-1 Aug 14 19:34:28 1998 CA:\PLOT\GHE\53-V\98B2.DWG 52895 HV\98B2.dwg 152.dwg