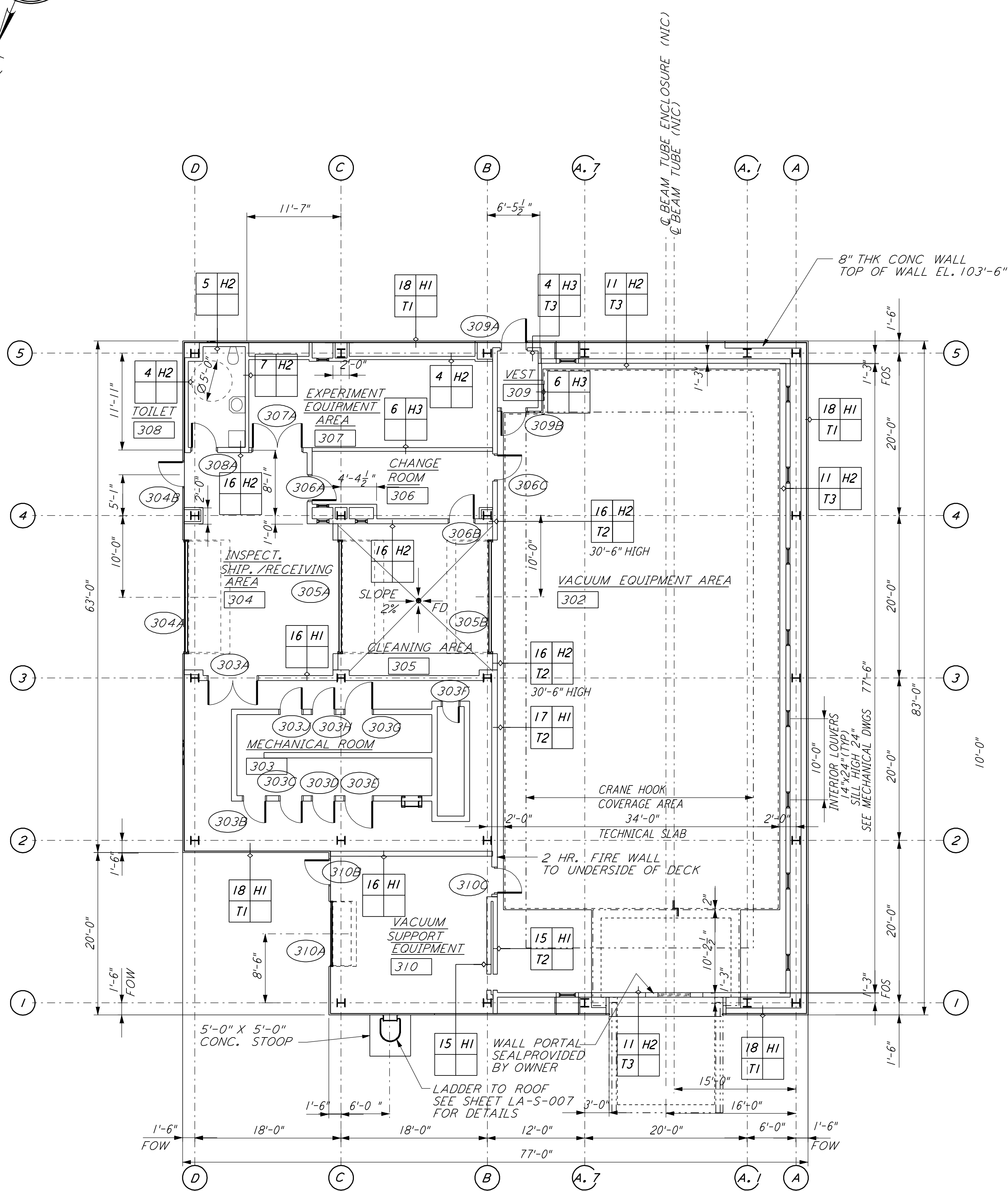
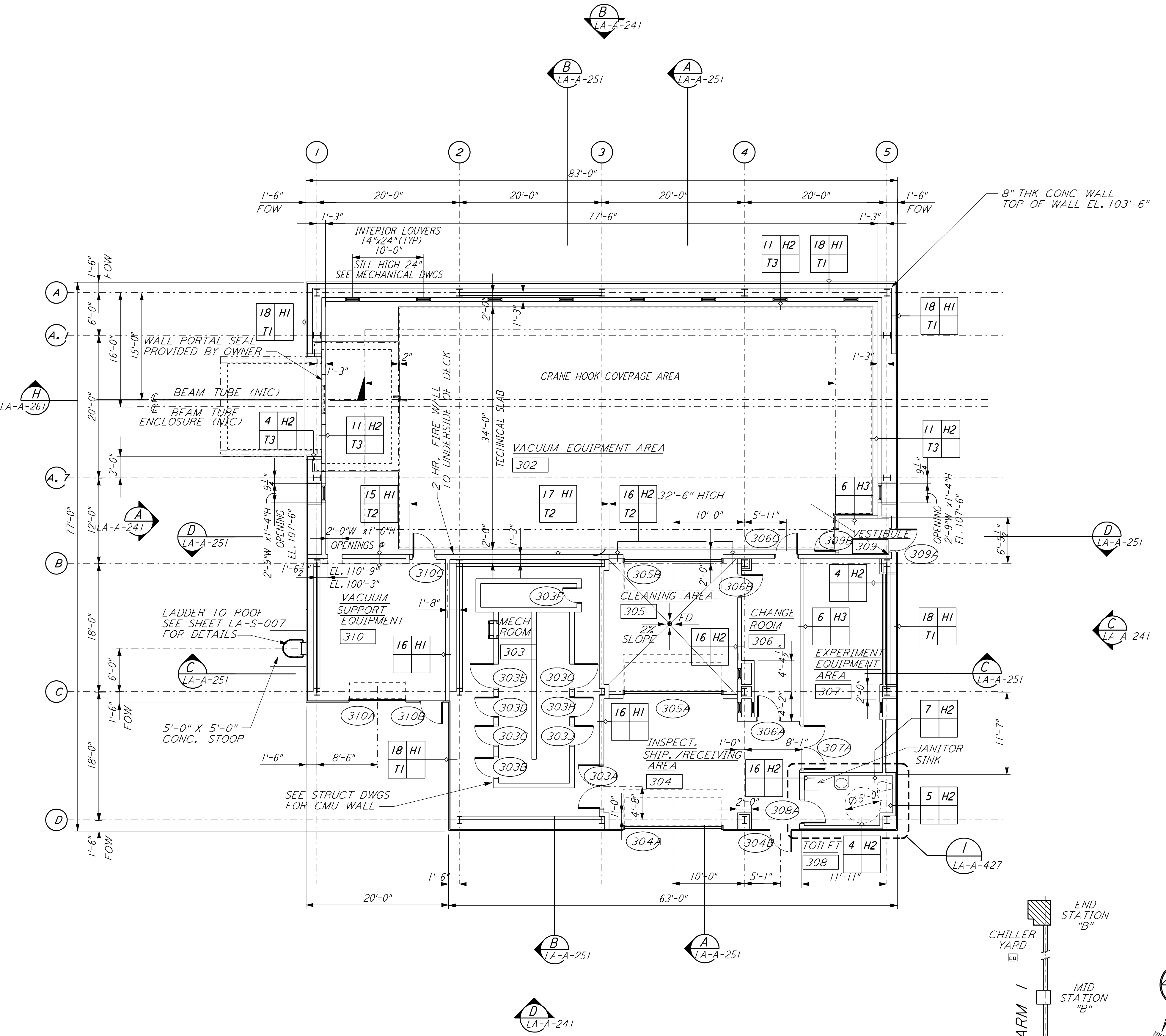


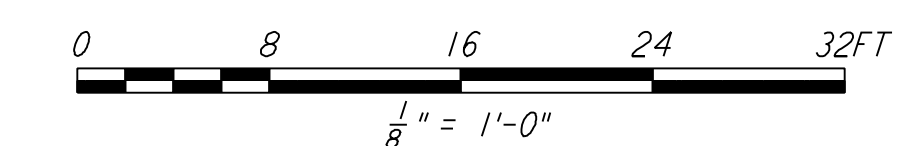
NOTE:
 1. SEE SPECIFICATIONS FOR ADDITIONAL INFORMATION AND SCHEDULES
 2. PROVIDE CONTROL JOINTS @ 40'-0" O. C. MAX THROUGHOUT LVEA AREAS - AT GRID LINES AND WHERE OTHERWISE INDICATED.



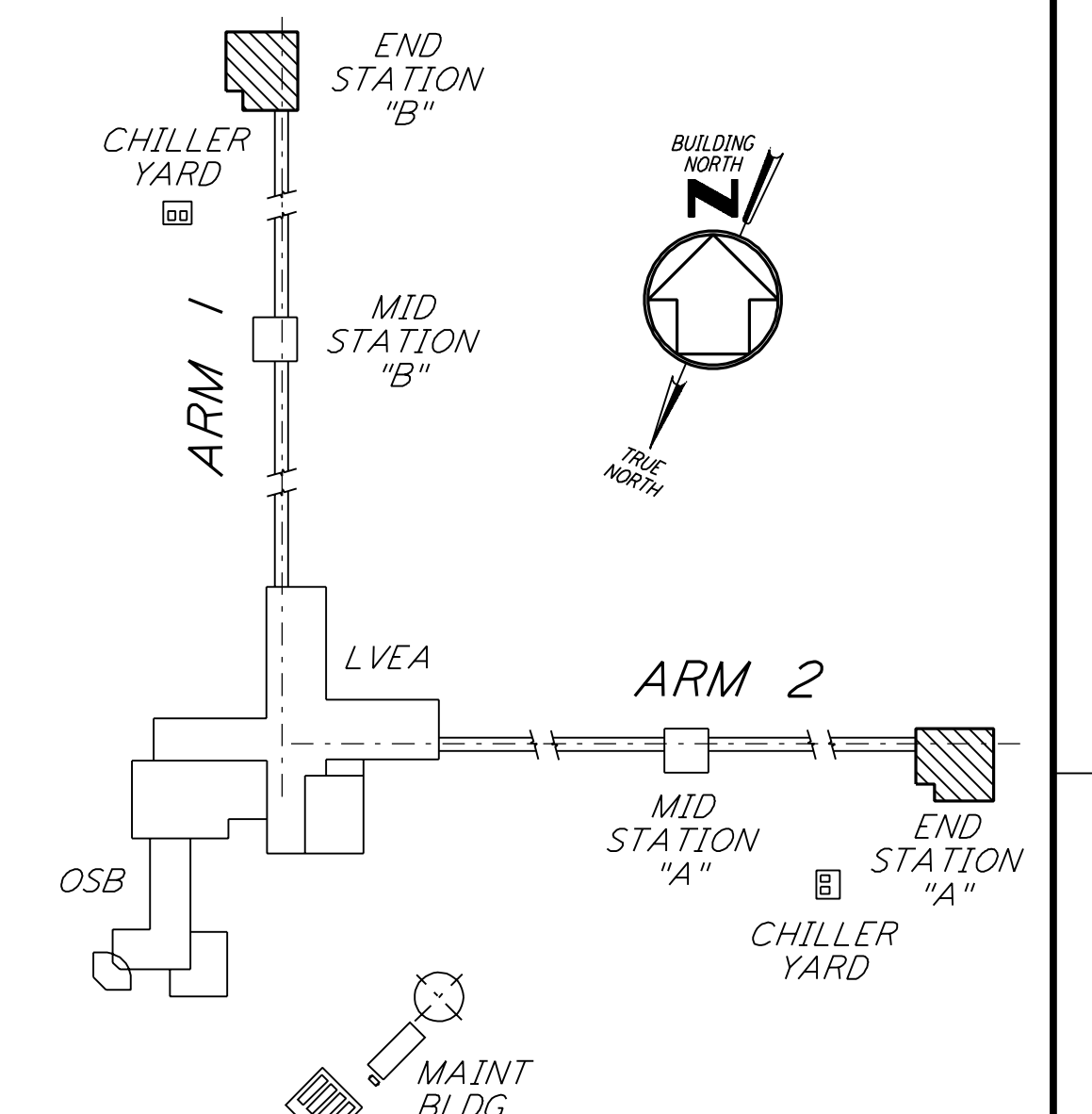
END STATION "B" FLOOR PLAN
 1/8" = 1'-0"
 LA-A-202



END STATION "A" FLOOR PLAN
 1/8" = 1'-0"
 LA-A-202



DATUM POINT EL +100.00 = 57.46' (END STATION "B")
 DATUM POINT EL +100.00 = 61.49' (END STATION "A")



KEY PLAN
 LIGO-D960893-02-0

This document and the design it covers are the property of PARSONS. They are loaned only with the borrower's expressed written agreement that they will not be reproduced, copied, loaned, exhibited, or used in any other way, except by written consent from PARSONS to the borrower.

| NO. | DATE | BY | CHKD | ENGR | PROJ | DESCRIPTION |
|-----|----------|-----|------|------|------|-----------------------------|
| 2 | 08-07-98 | SJM | | | | ISSUED FOR AS-BUILT |
| 1 | 2-28-97 | CKT | TB | AK | TDM | MID & END STATION PARTITION |

| ISSUED FOR CONSTRUCTION | | |
|-------------------------|-----|----------|
| DRAWN | CKT | 11-15-96 |
| CHECKED | TB | 11-15-96 |
| ENGINEER | SF | 11-15-96 |
| PROJ | MDW | 11-15-96 |

AS-BUILT DRAWINGS

PARSONS
 100 WEST WALNUT STREET
 PASADENA, CALIFORNIA

LIGO
 CALIFORNIA INSTITUTE OF TECHNOLOGY
 MASSACHUSETTS INSTITUTE OF TECHNOLOGY

LASER INTERFEROMETER
 GRAVITATIONAL-WAVE OBSERVATORY
 SITE NO. 2 - LIVINGSTON, LOUISIANA

| | |
|-----------------|--|
| TITLE | ARCHITECTURAL END STATIONS FLOOR PLANS |
| AS NOTED | PP150969 |
| SHEET NUMBER | 8094 |
| CONTRACT NUMBER | 8094 |
| PROJECT NUMBER | 8094 |
| REVISIONS | |
| LA-A-202 | |