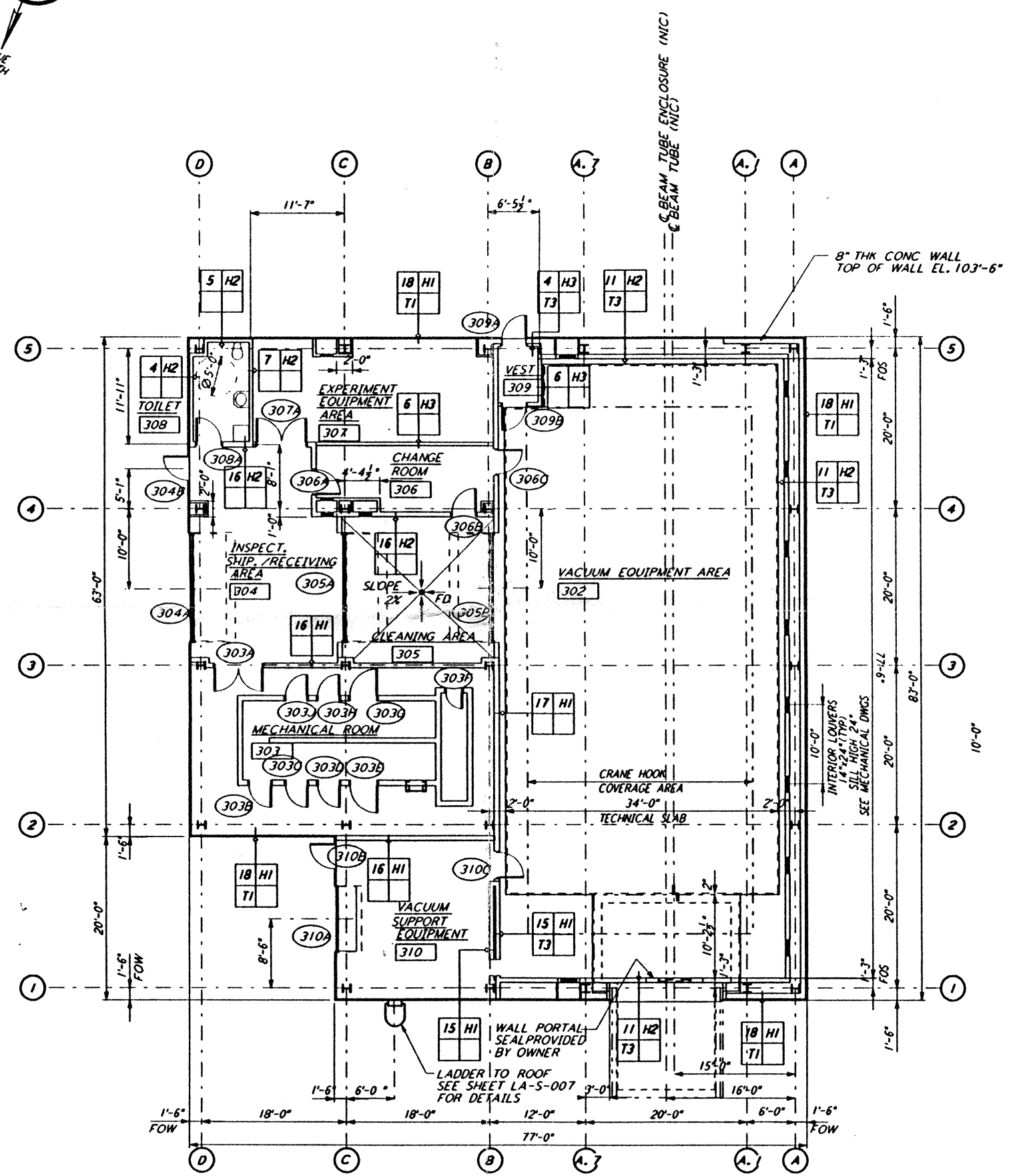
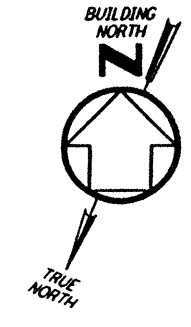
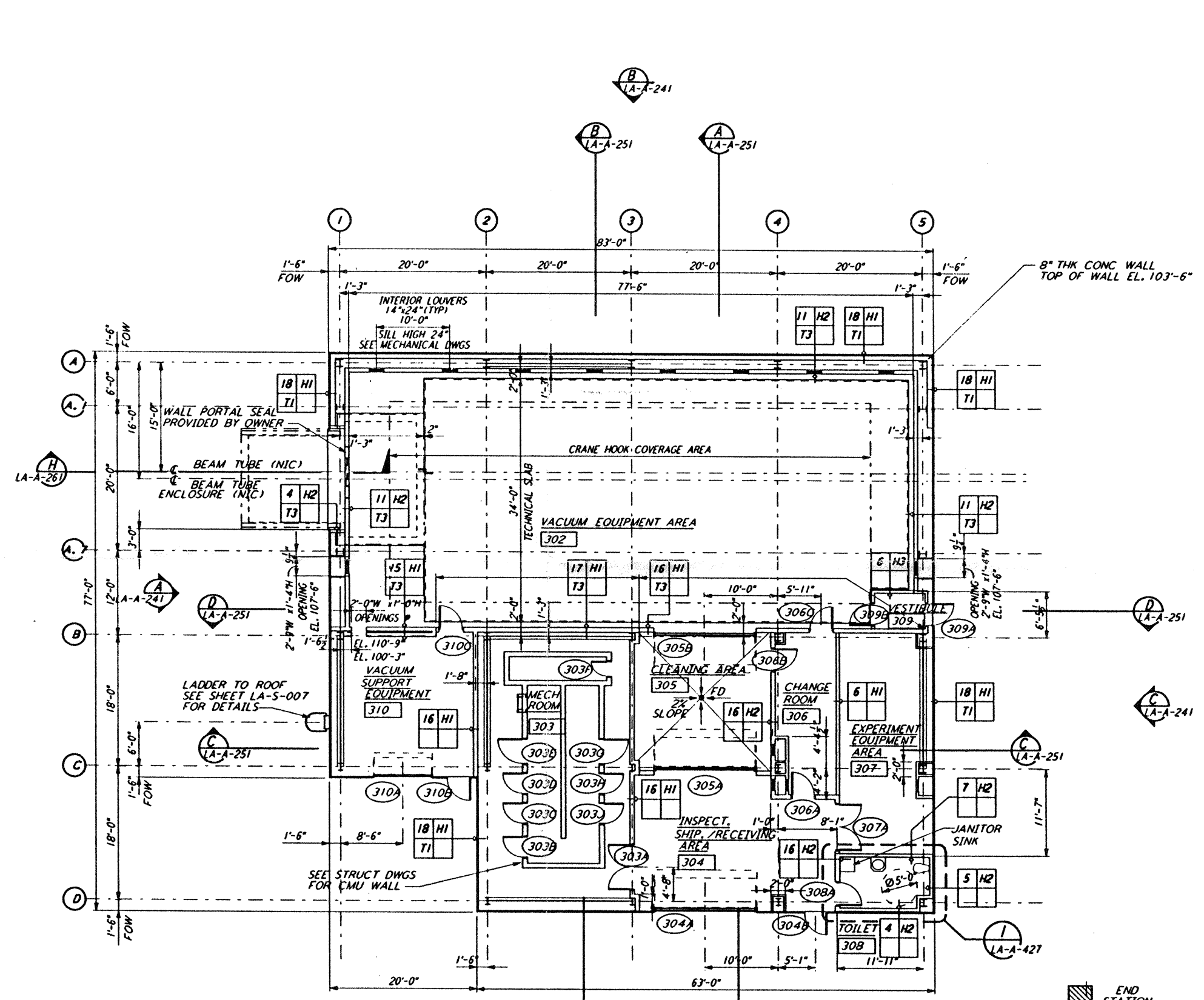


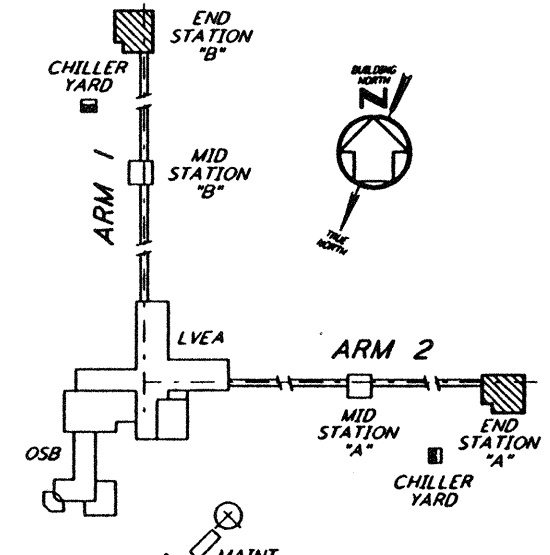
NOTE:
 1. SEE SPECIFICATIONS FOR ADDITIONAL INFORMATION AND SCHEDULES
 2. PROVIDE CONTROL JOINTS @ 40'-0" O.C. MAX THROUGHOUT LVEA AREAS - AT GRID LINES AND WHERE OTHERWISE INDICATED.



END STATION "B" FLOOR PLAN
 1/4" = 1'-0" LA-A-202



END STATION "A" FLOOR PLAN
 1/4" = 1'-0" LA-A-202



KEY PLAN

DATUM POINT EL +100.00 = 57.45' (END STATION "B")
 DATUM POINT EL +100.00 = 51.49' (END STATION "A")

This document and the design it covers are the property of PARSONS. They are loaned only with the borrower's expressed written agreement that they will not be reproduced, copied, loaned, exhibited, or used in any other way, except by written consent from PARSONS to the borrower.

NO.	DATE	BY	CHKD	ENGR	PROJ	DESCRIPTION
C	7-24-96	CKT	TB	BK	TDM	ISSUED FOR BID
B	6-14-96	CKT	BK	SF	TDM	FINAL DESIGN REVIEW
A	10/31/95	CKT	SF	TDM	TDM	PRELIMINARY DESIGN REVIEW

DRAWN	CKT
CHECKED	
ENGINEER	
PROJ	

PARSONS
 100 WEST WALNUT STREET
 PASADENA, CALIFORNIA

LIGO
 CALIFORNIA INSTITUTE OF TECHNOLOGY
 MASSACHUSETTS INSTITUTE OF TECHNOLOGY

LASER INTERFEROMETER
 GRAVITATIONAL-WAVE OBSERVATORY
 SITE NO. 2 - LIVINGSTON, LOUISIANA

TITLE	ARCHITECTURAL END STATIONS FLOOR PLANS
AS NOTED	PP150969 8094
PROJECT NUMBER	
LA-A-202	

LIGO-D960893-C-0

LIGOLAF 3.BOP

Tue Jul 23 10:15:48 1996 s3-v18b2 J:\PLOTS\QUEUES\18B2\AR202.PRF