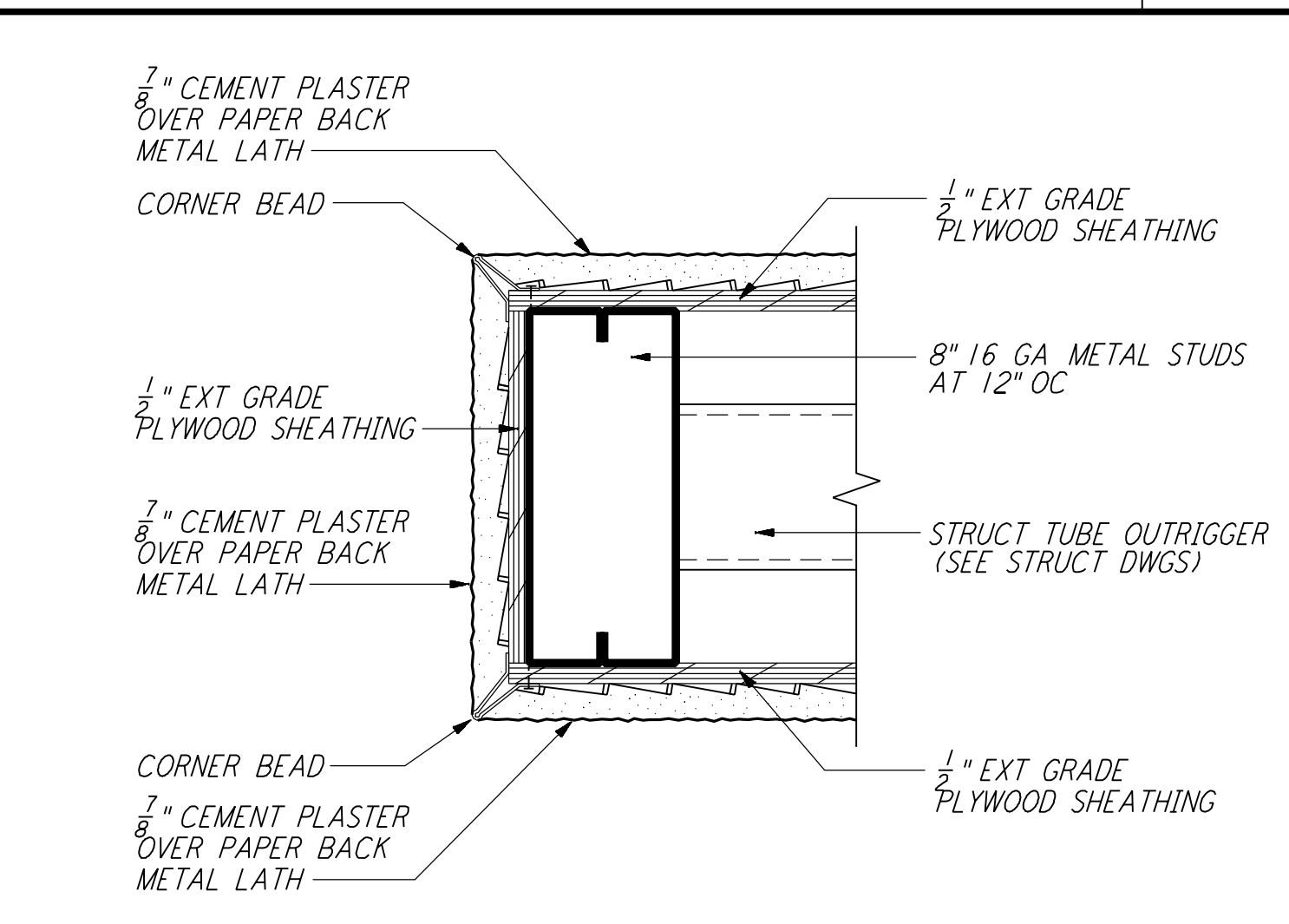
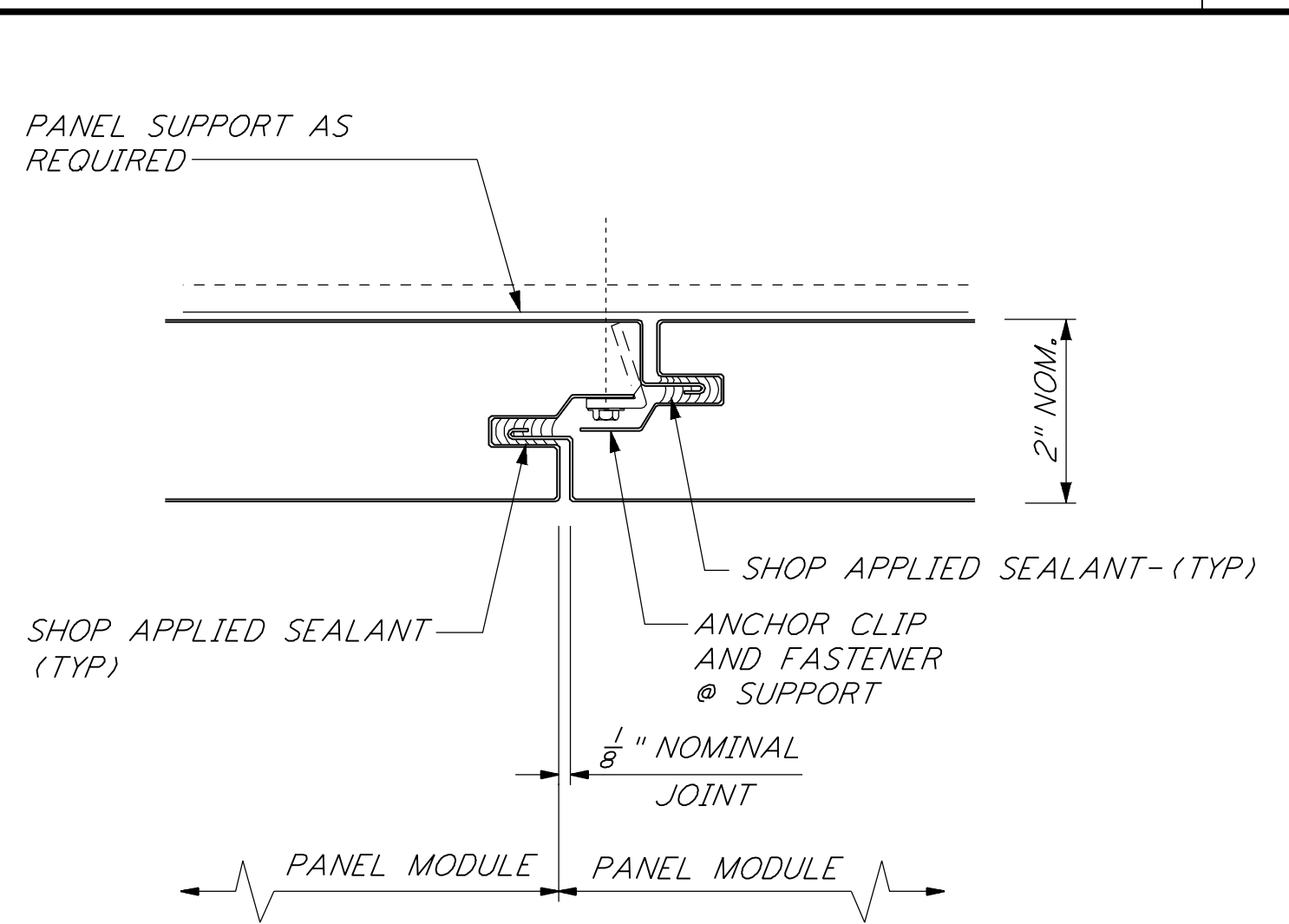


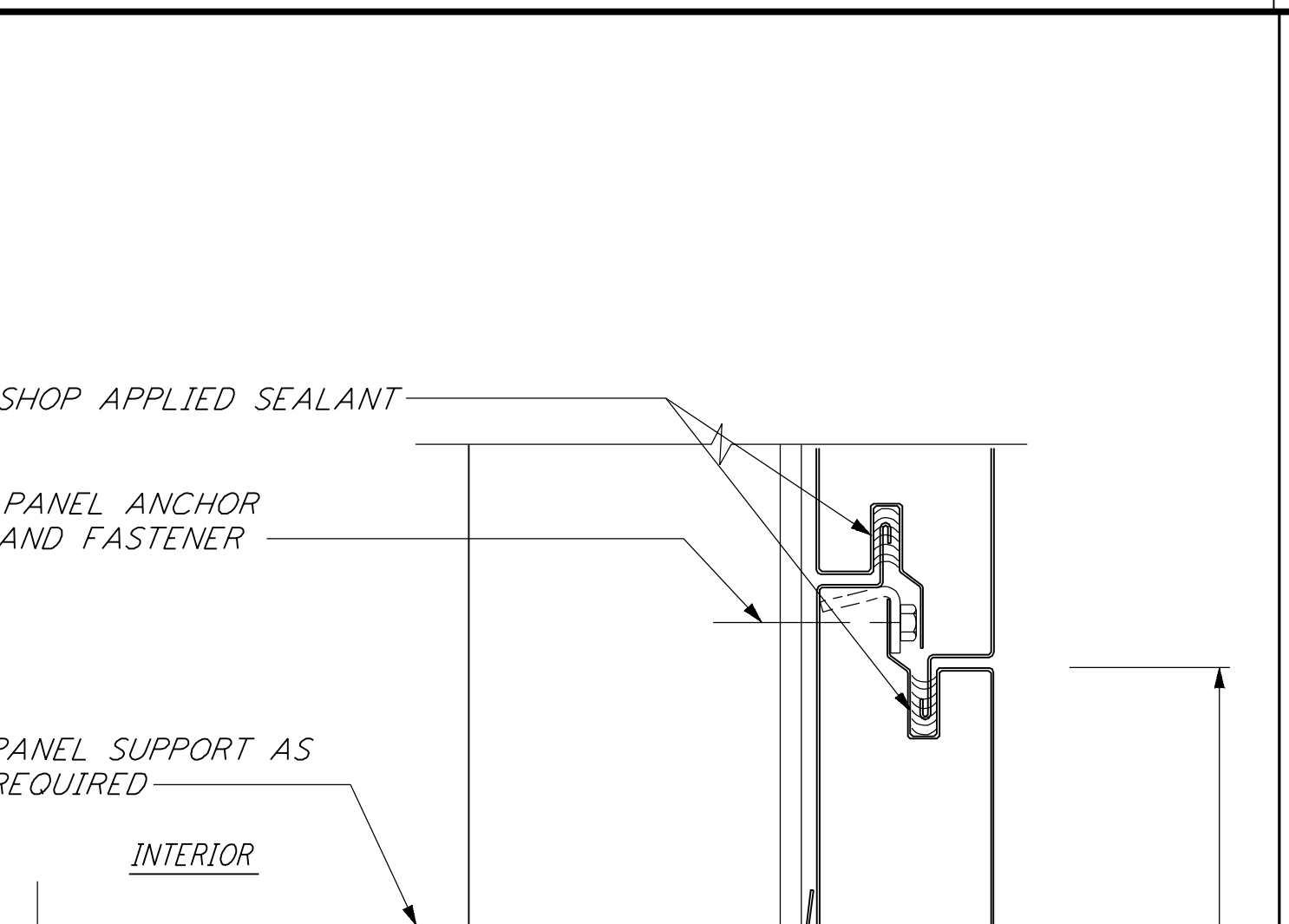
CONC STOOP AT MET PANEL (14) REF
 3"=1'-0" LA-A-421 LA-A-261



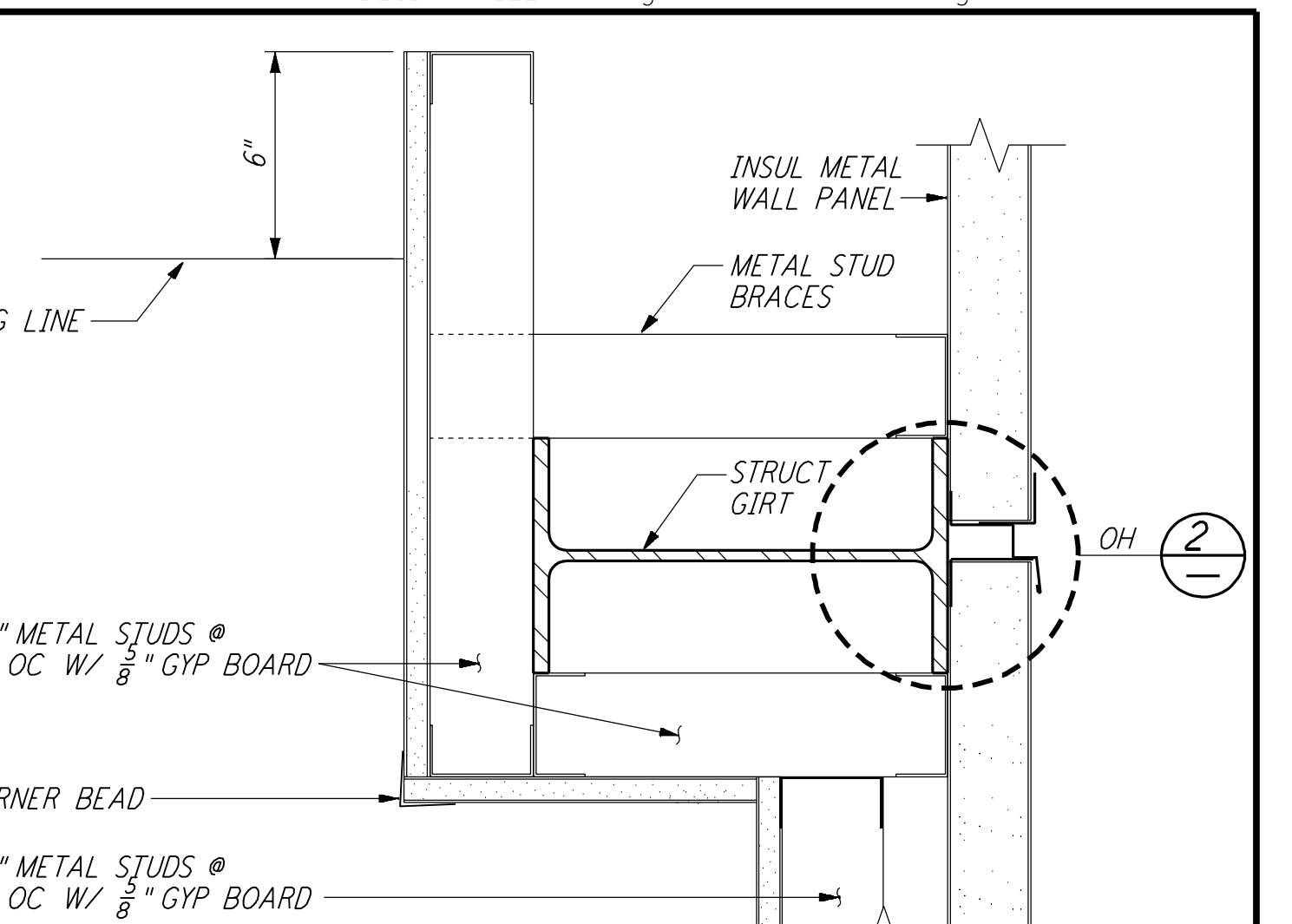
END OF CURVED WALL (10) REF
 3"=1'-0" LA-A-421 LA-A-108



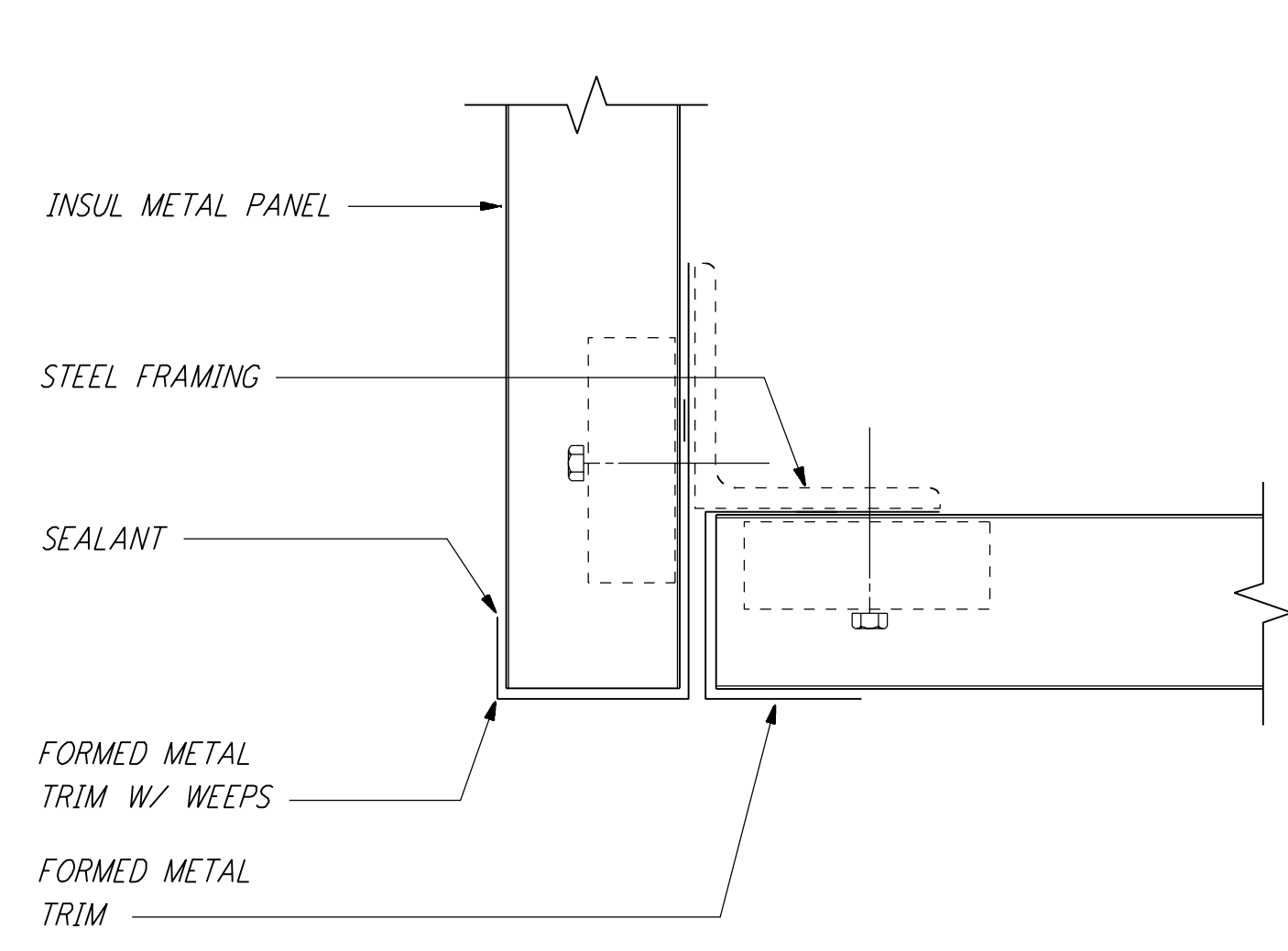
VERT MET WALL PANEL JT (6) REF
 HALF FULL LA-A-421 LA-A-142



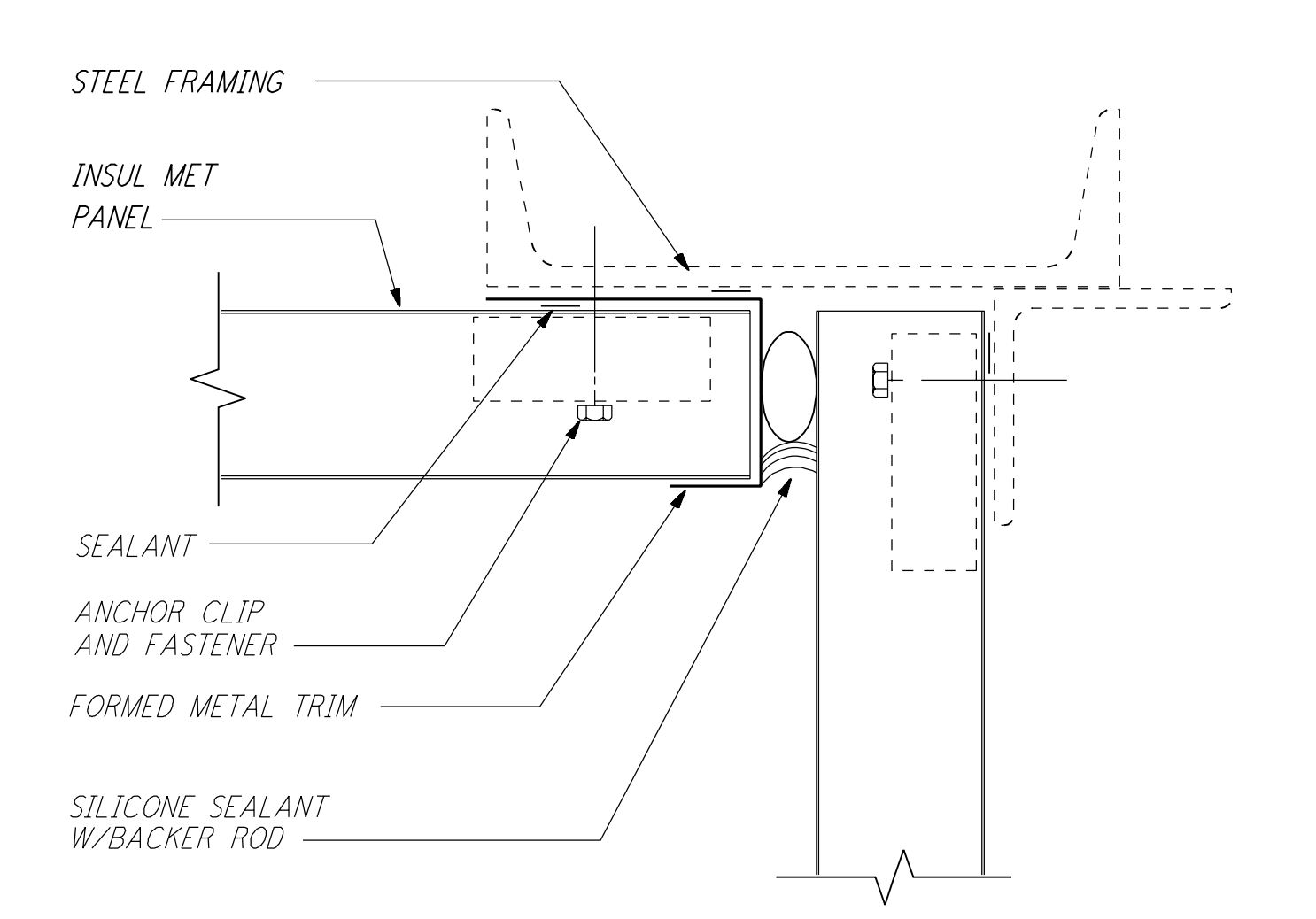
OUTSIDE CORNER FLASHING (4) REF
 HALF FULL LA-A-421 LA-A-141 LA-A-142



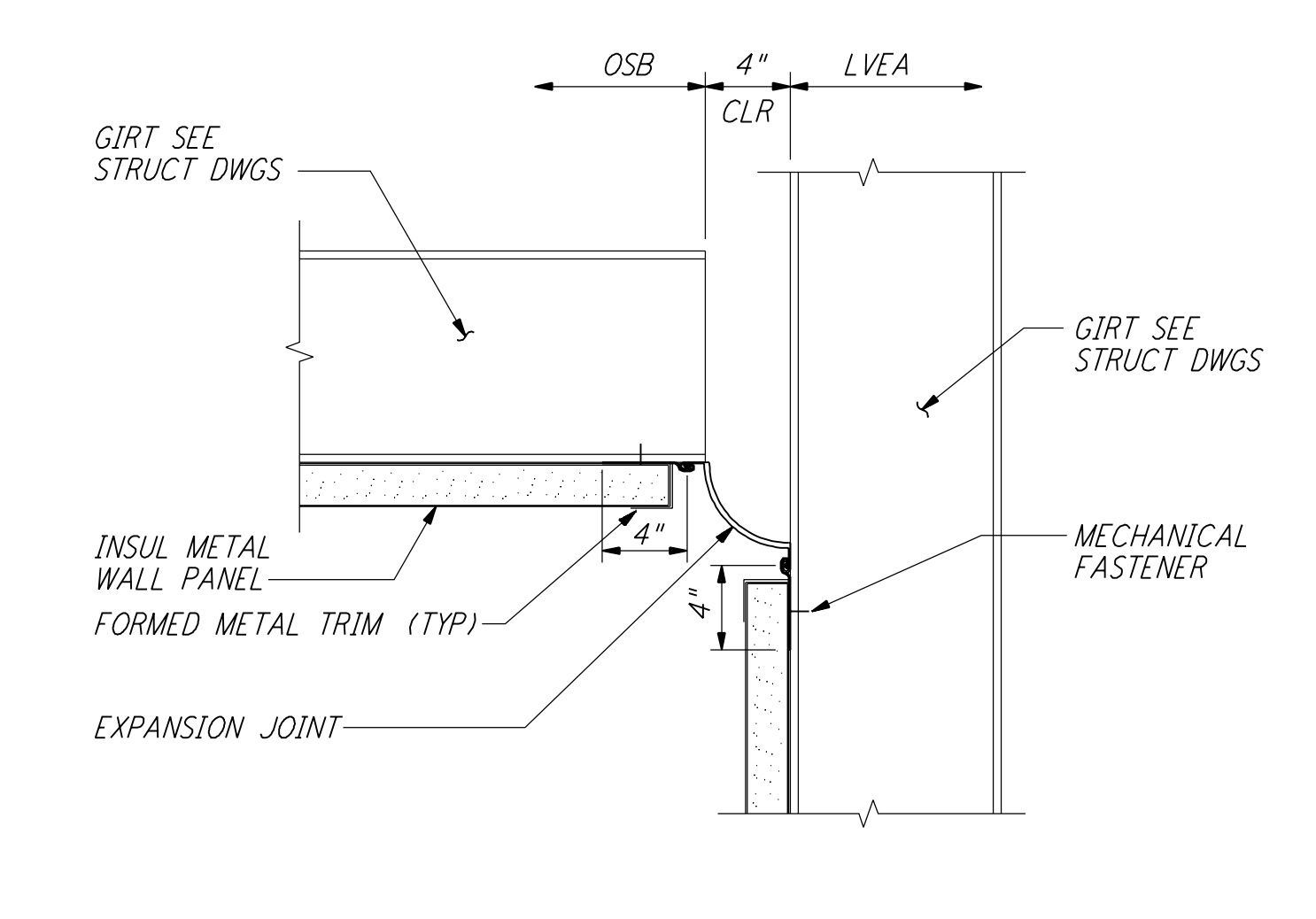
FURRING @ GIRT (1) REF
 3"=1'-0" LA-A-421 LA-A-163



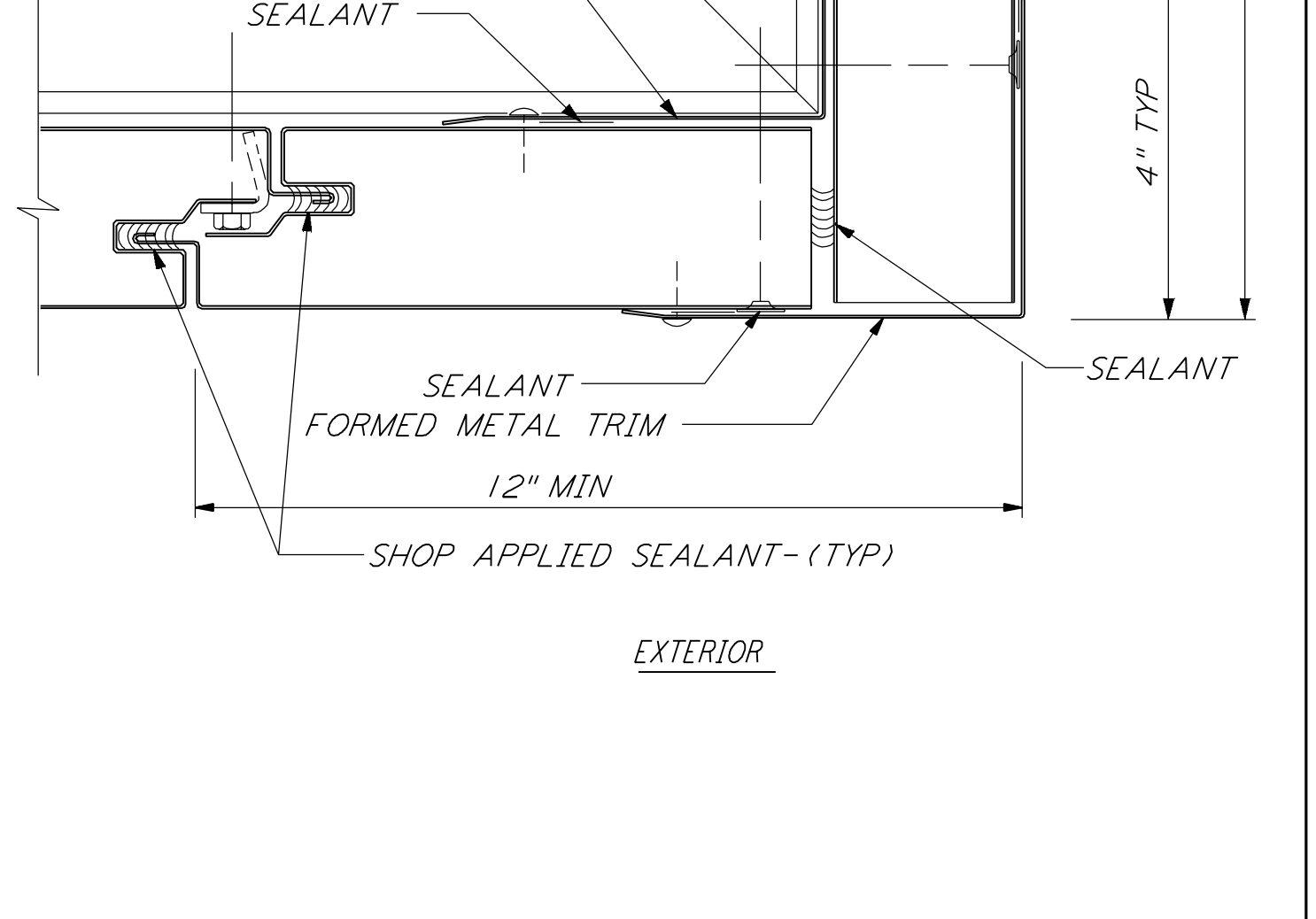
METAL PANEL SOFFIT (15) REF
 HALF FULL LA-A-421 LA-A-425



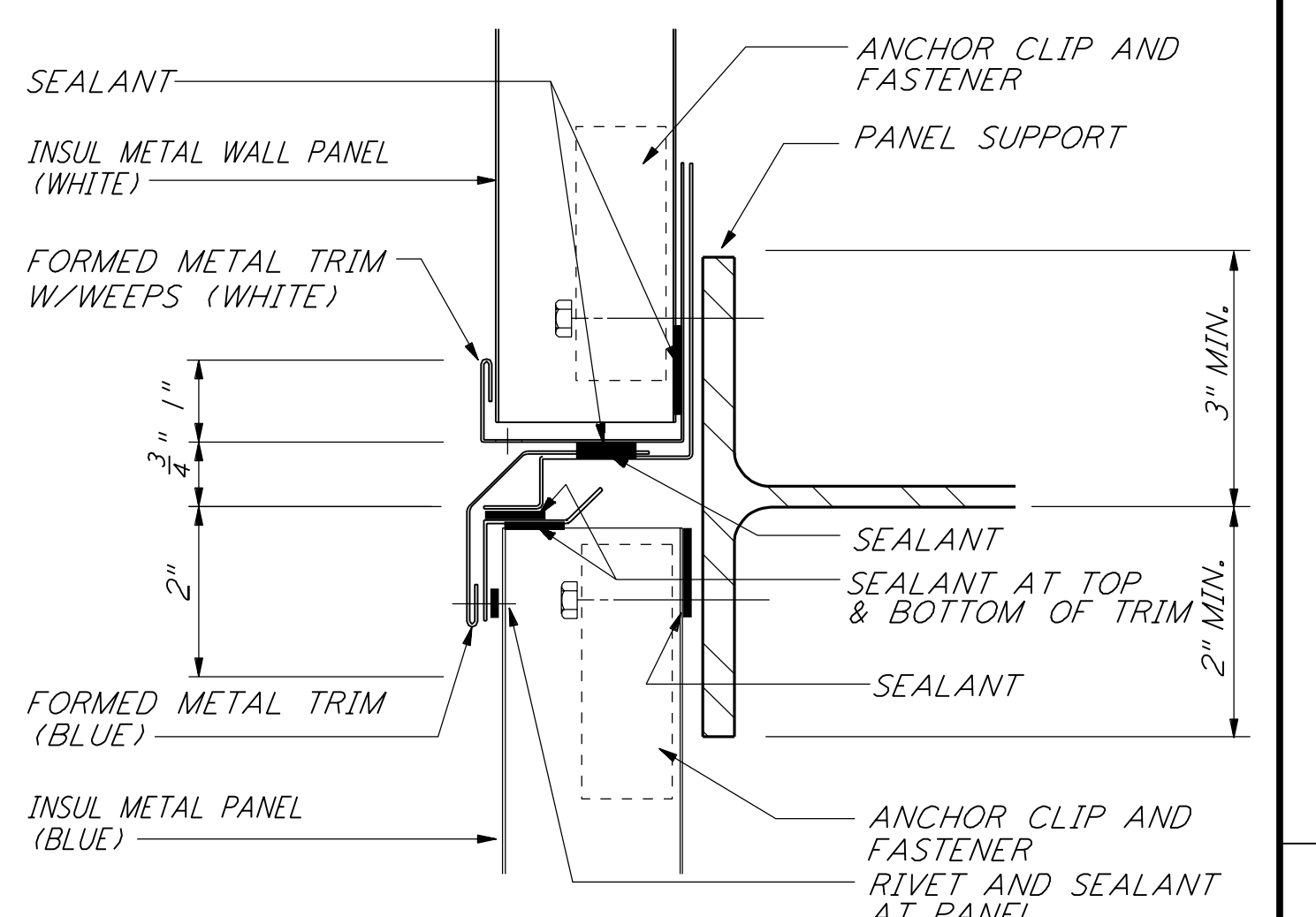
METAL PANEL SOFFIT (11) REF
 HALF FULL LA-A-421 LA-A-425



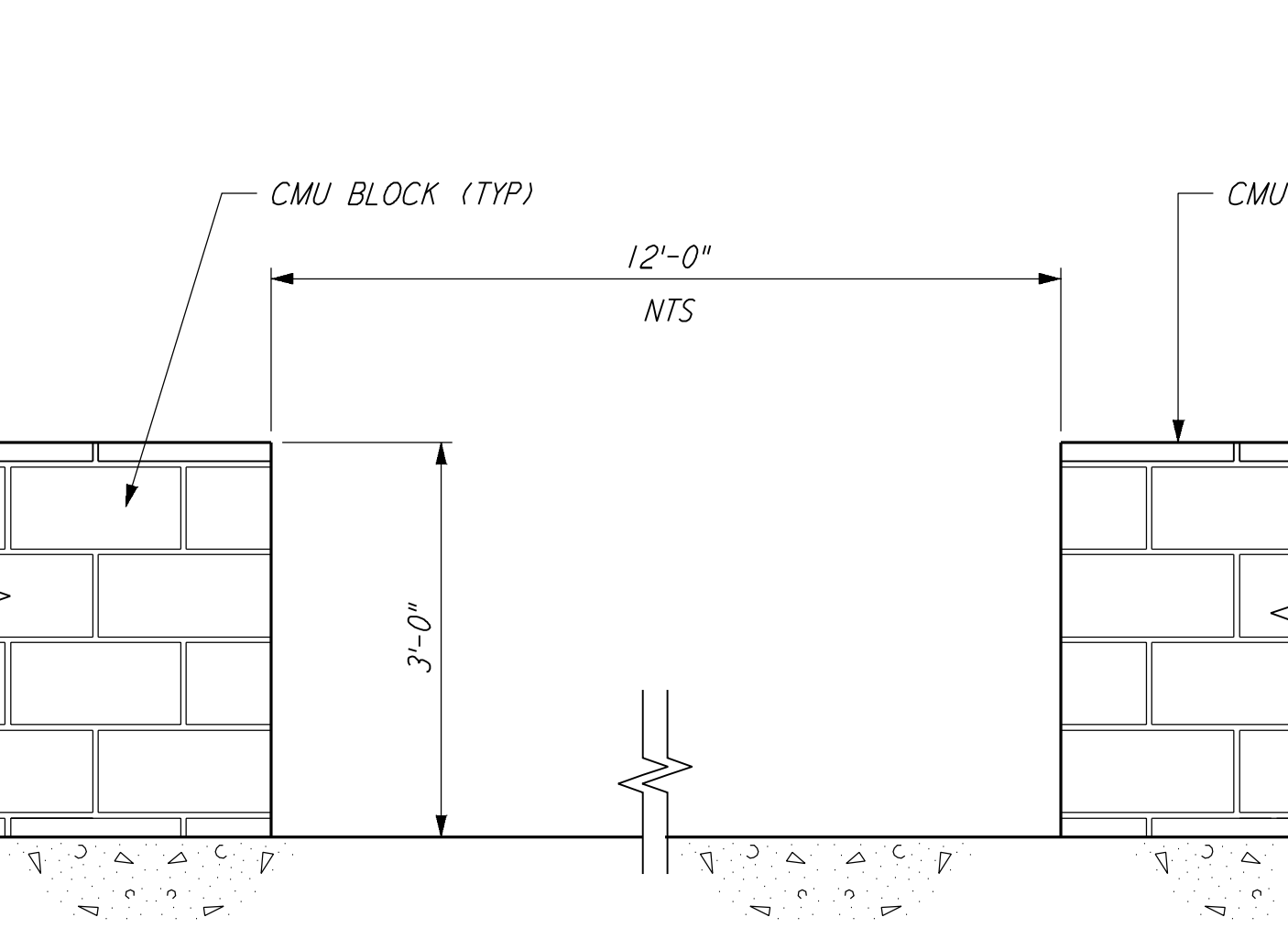
VERT INSIDE CORNER EXP JT (7) REF
 1 1/2"=1'-0" LA-A-421 LA-A-132



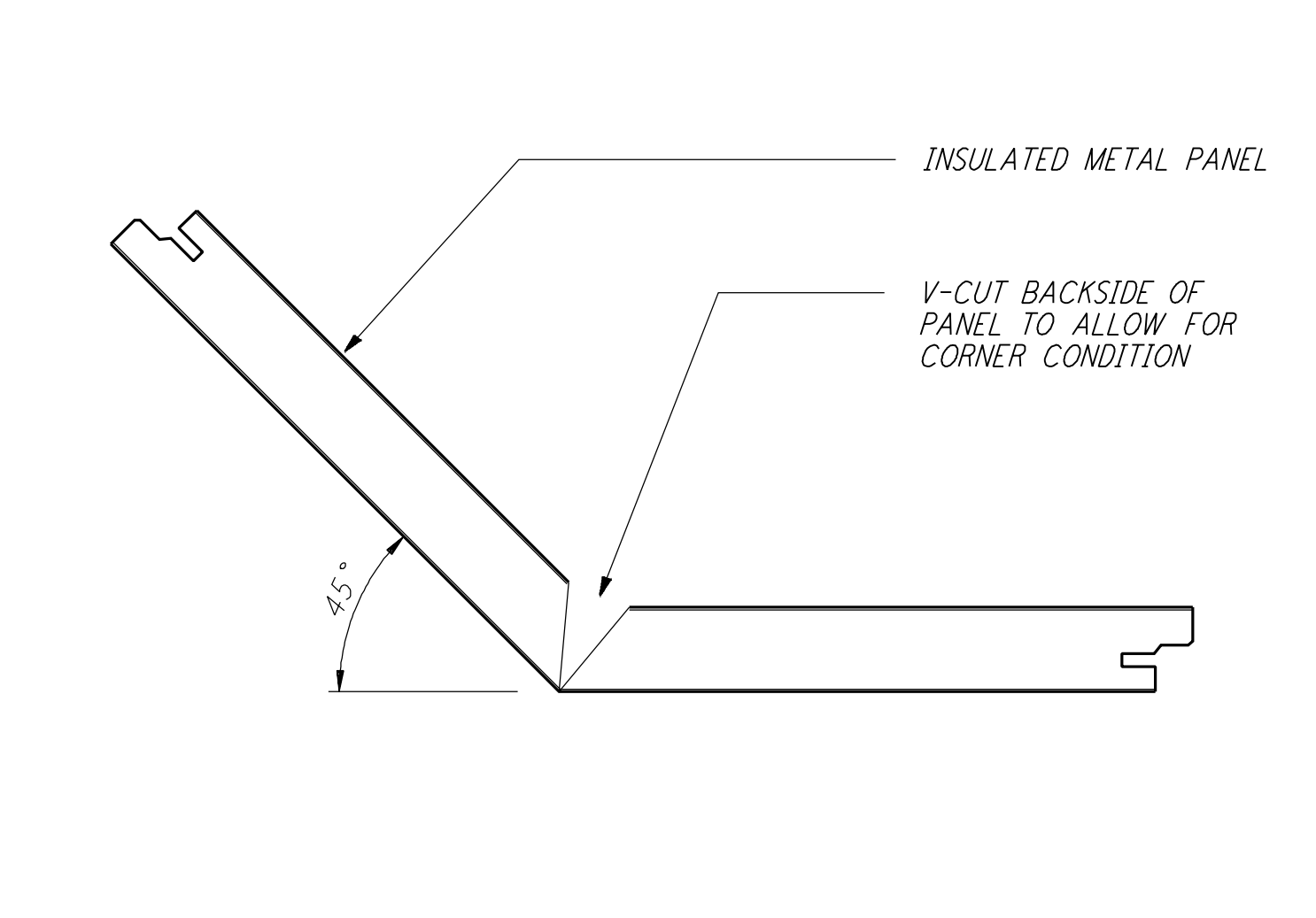
INSIDE CORNER FLASHING (5) REF
 HALF FULL LA-A-421 LA-A-102 LA-A-105



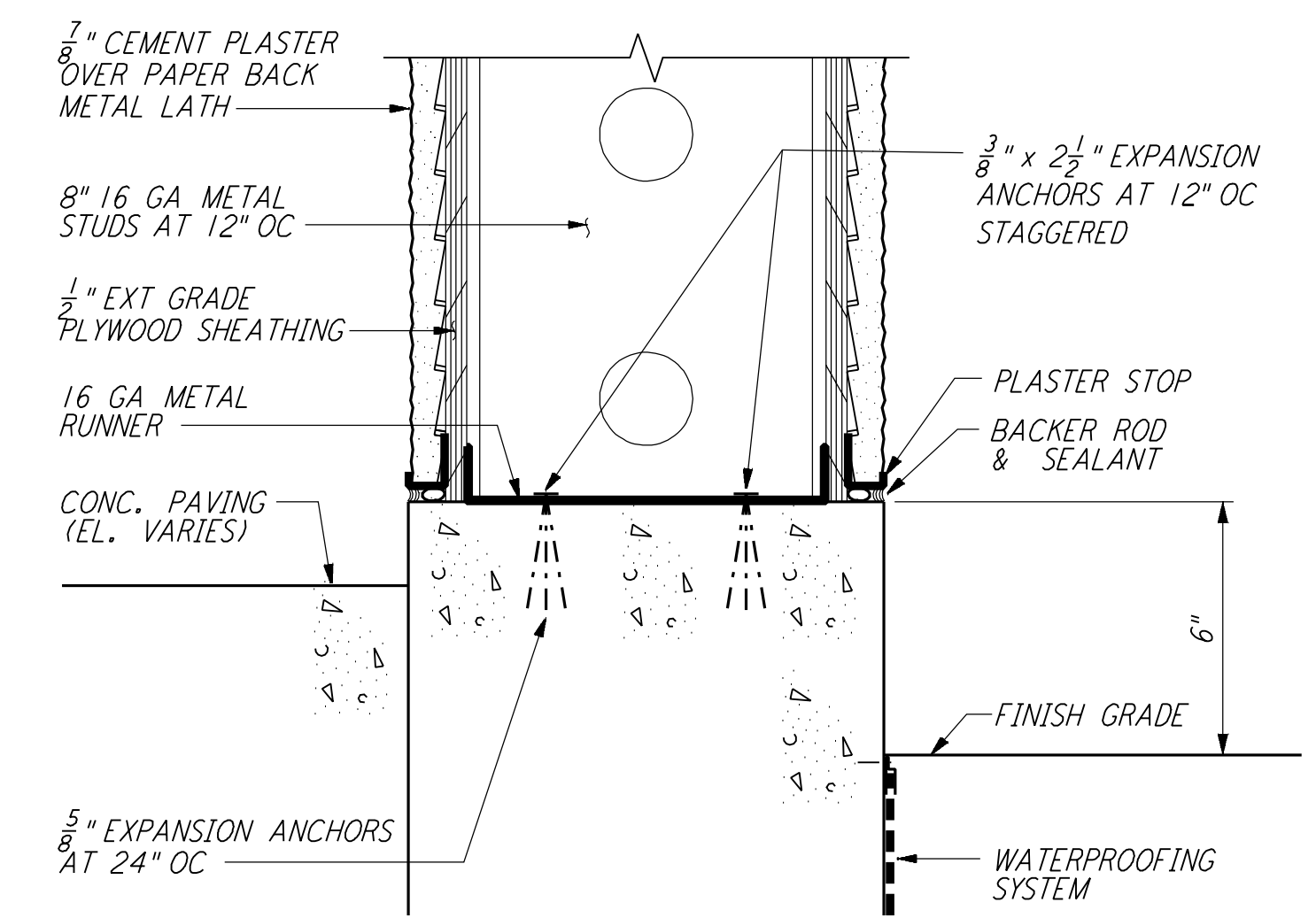
MET WALL PANEL HORIZ JT (2) REF
 HALF FULL LA-A-421 LA-A-141 LA-A-161



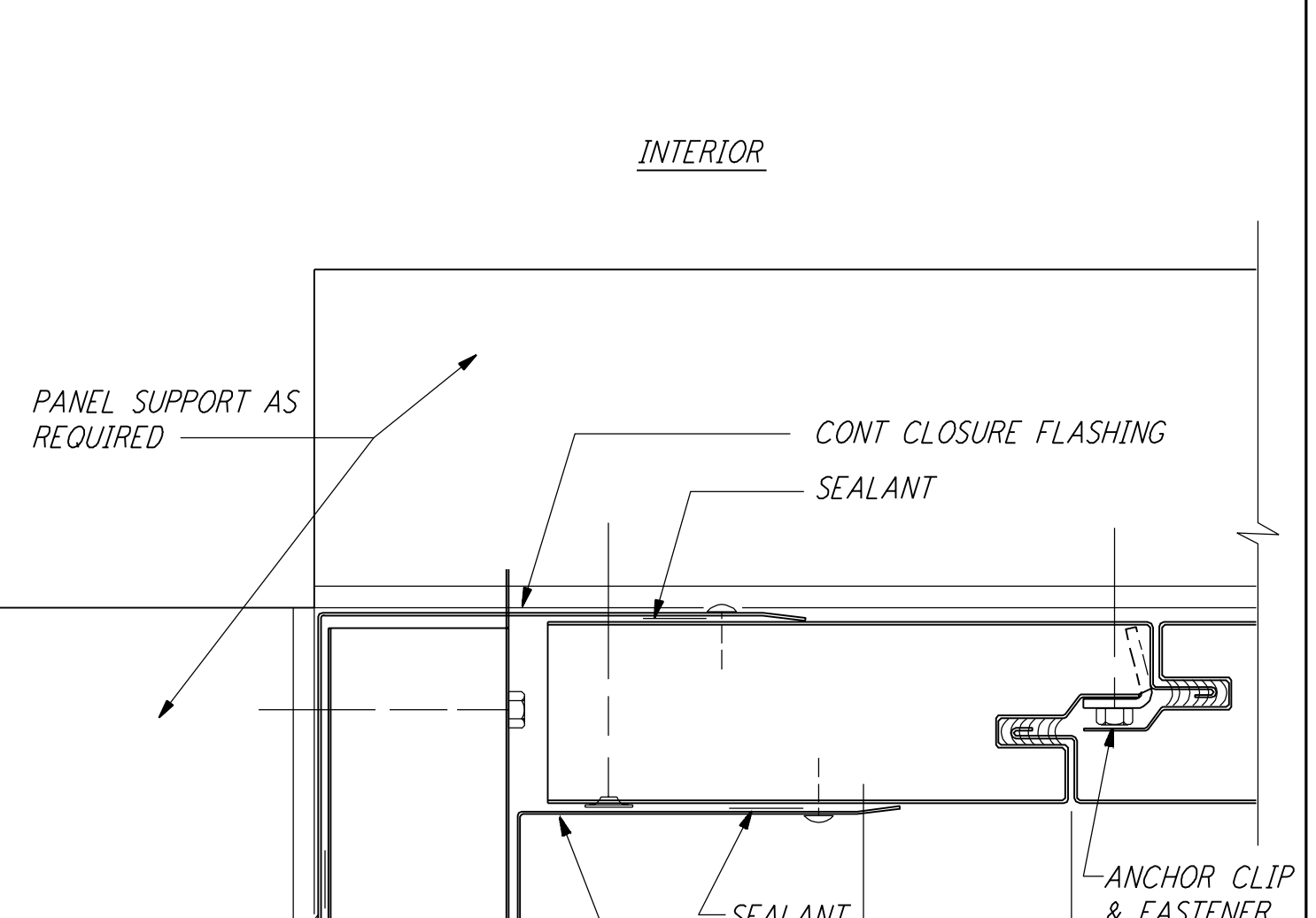
PATIO BLOCK WALL (16) REF
 3/4"=1'-0" LA-A-421 LA-A-108



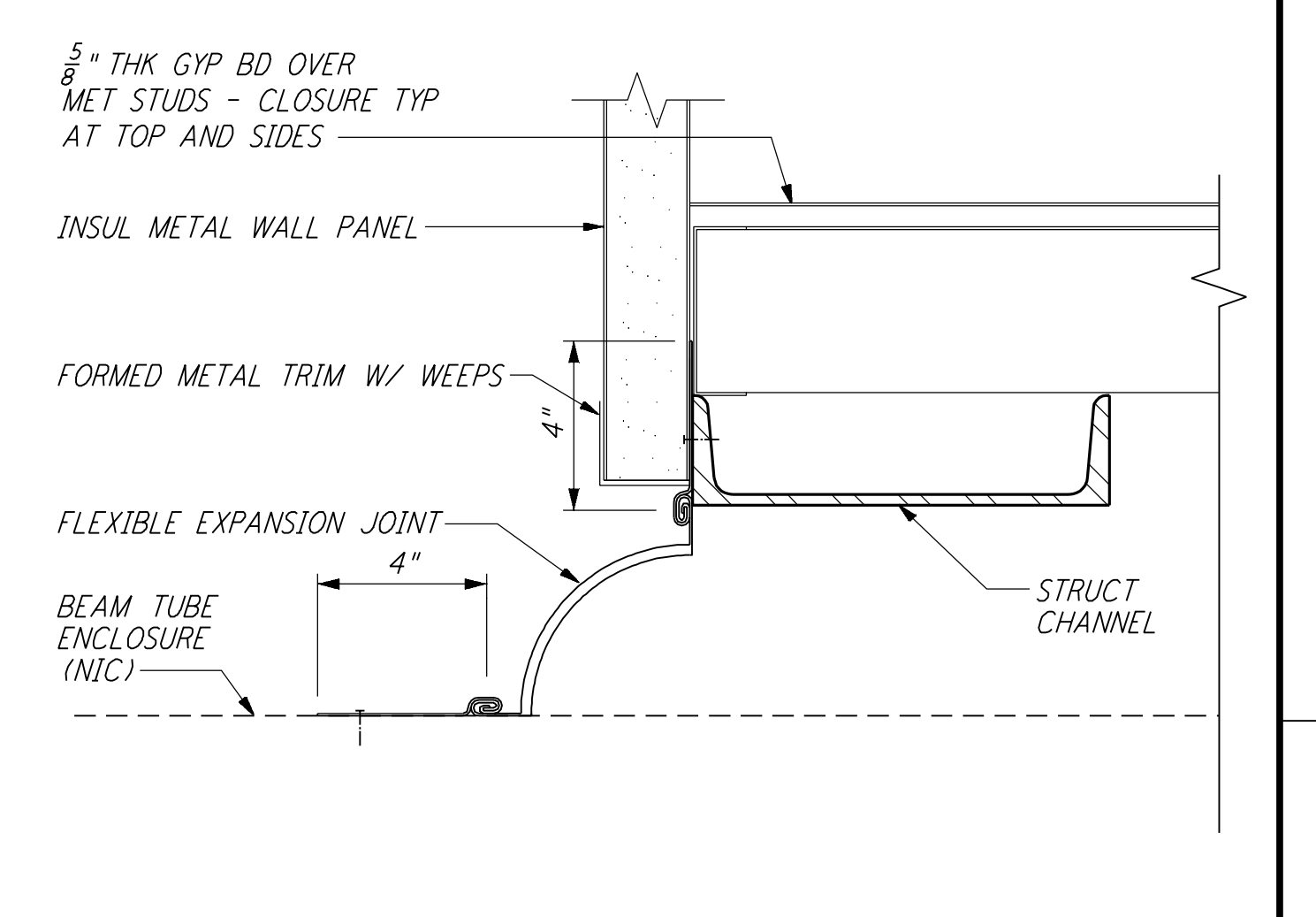
PANEL JOINT AT CANOPY (12) REF
 3"=1'-0" LA-A-421 LA-A-132 LA-A-122



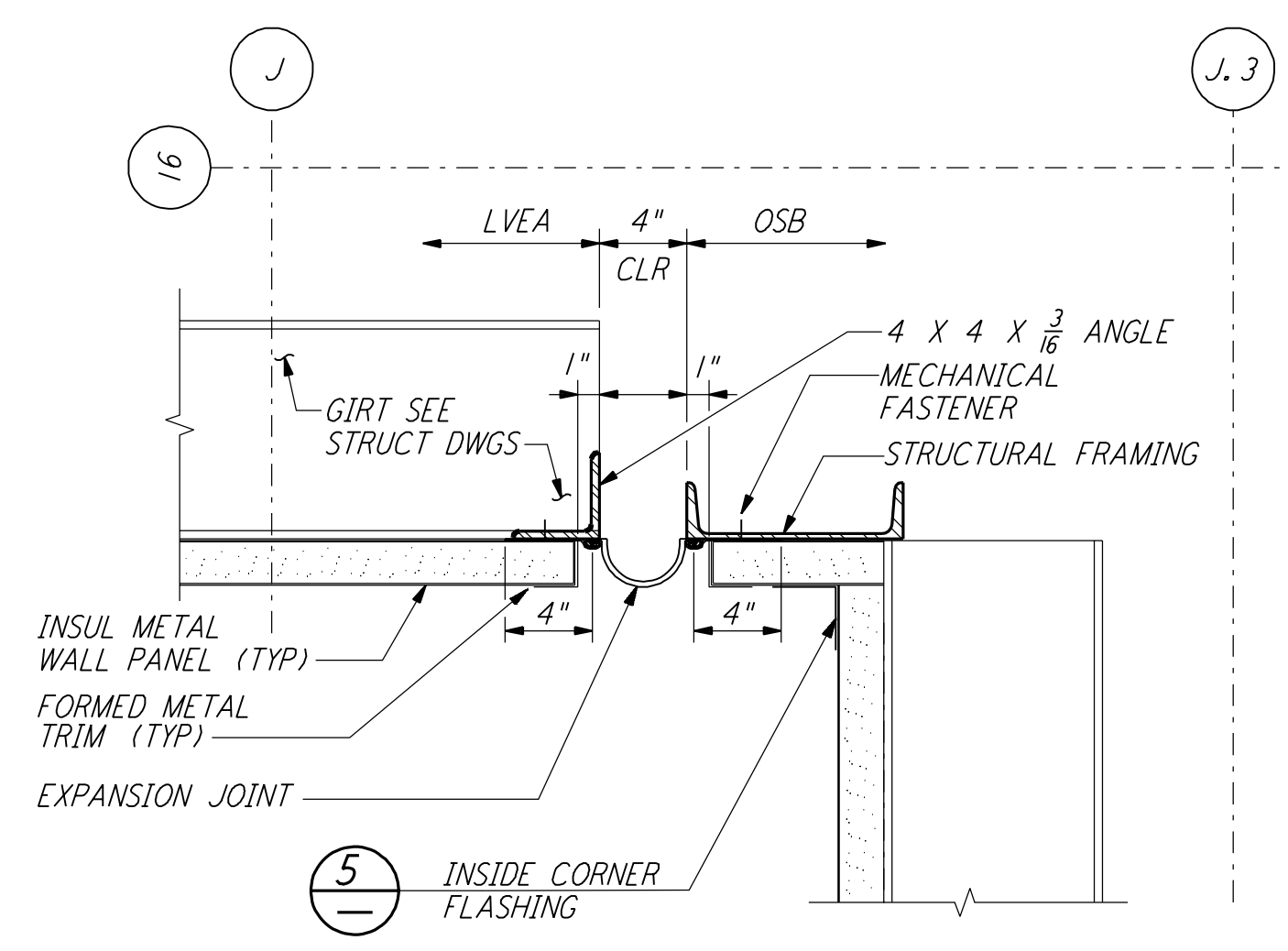
CURVED WALL BASE (8) REF
 3"=1'-0" LA-A-421 LA-A-141



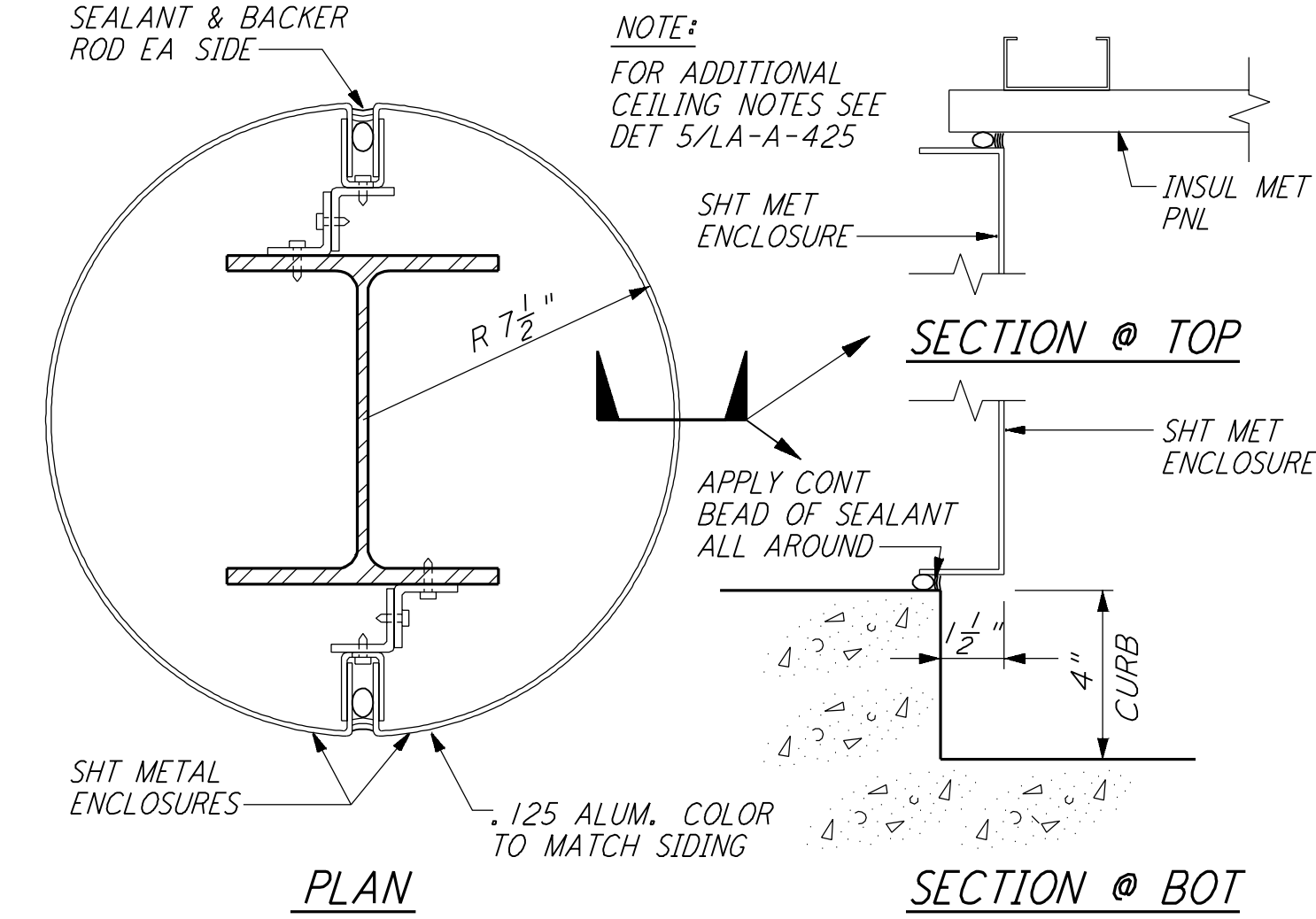
INSIDE CORNER FLASHING (5) REF
 HALF FULL LA-A-421 LA-A-102 LA-A-105



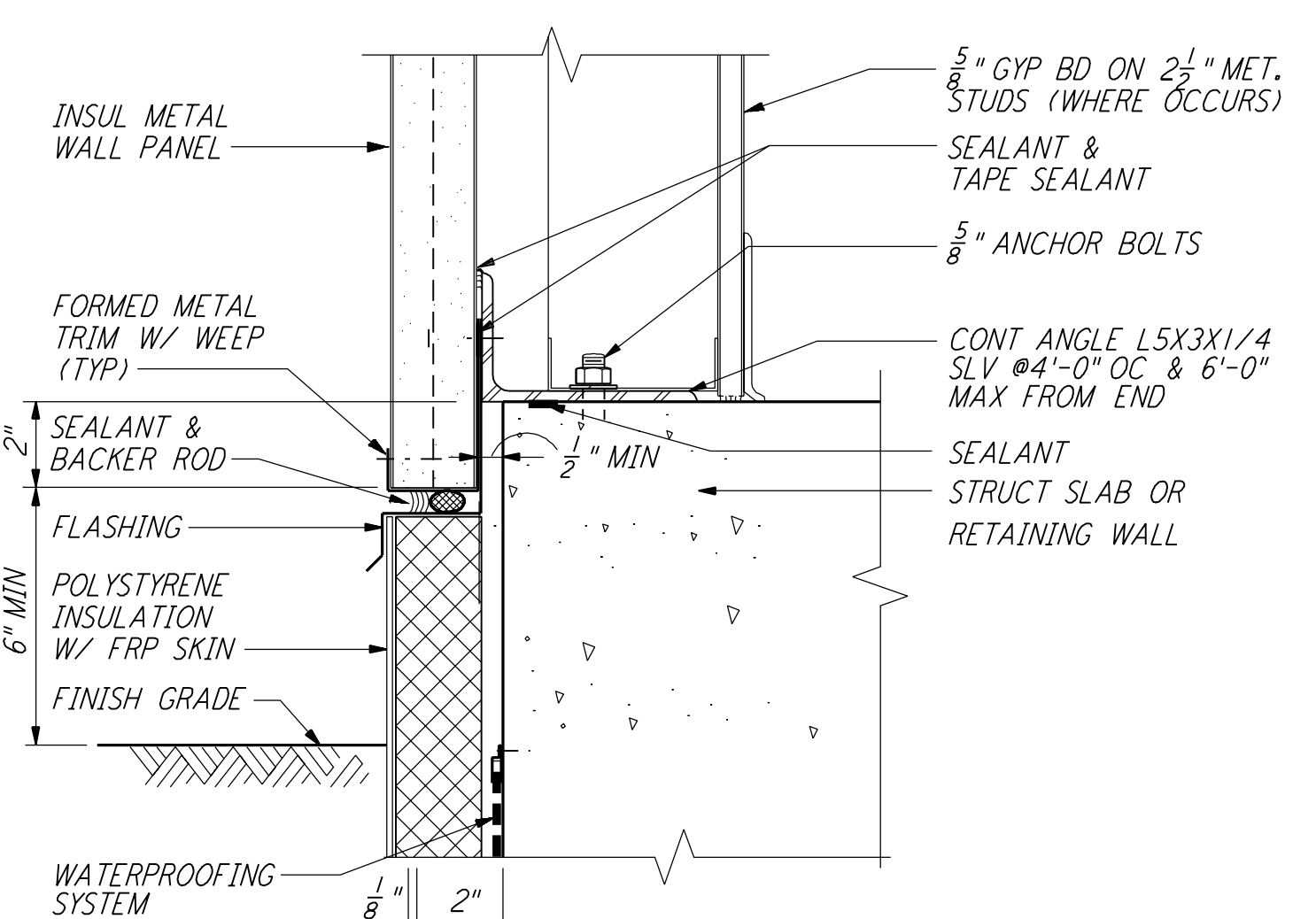
EXP JT @ BM TUBE ENCL (3) REF
 3"=1'-0" LA-A-421 LA-A-161



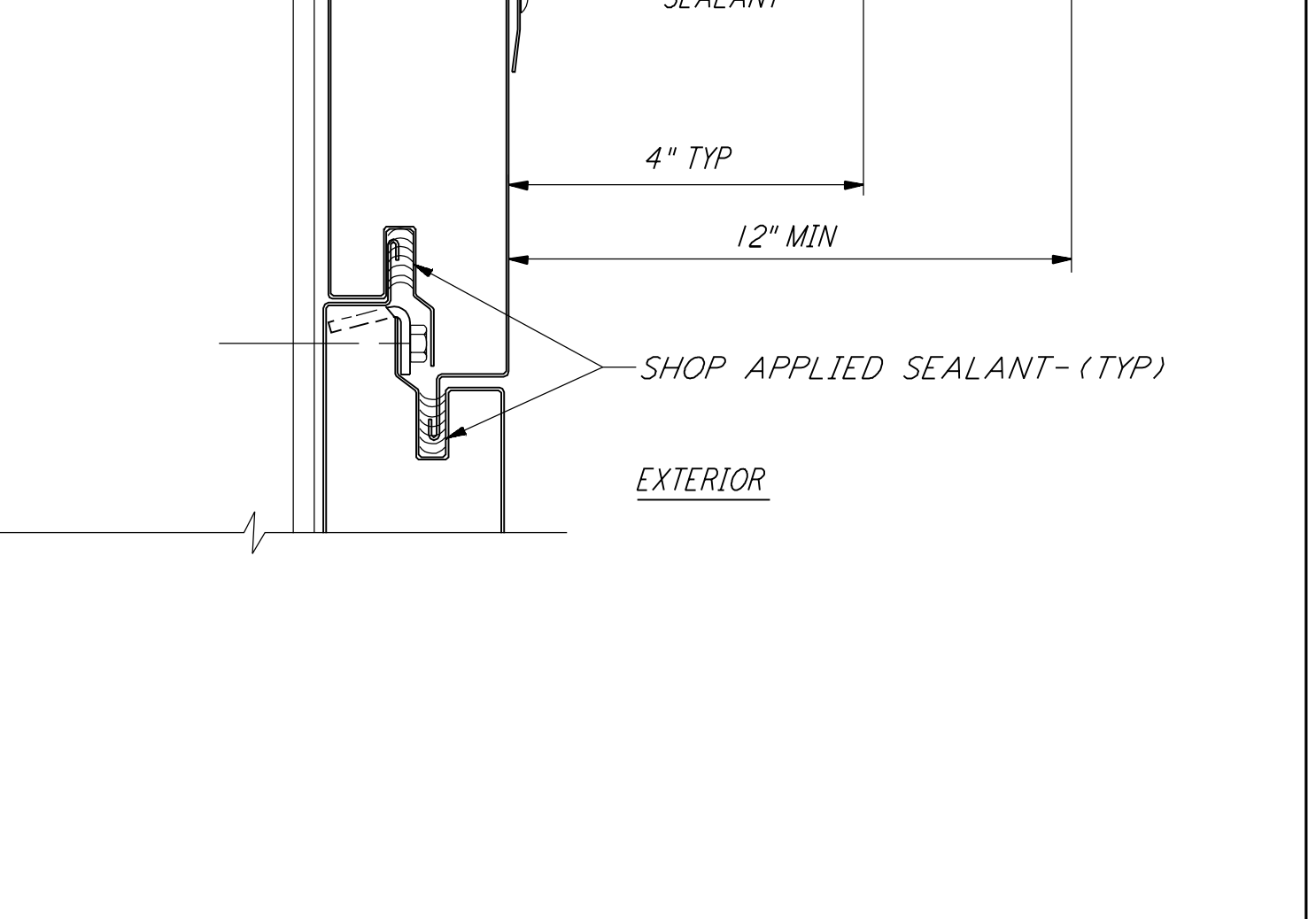
VERTICAL EXPANSION JOINT (17) REF
 1 1/2"=1'-0" LA-A-421 LA-A-109



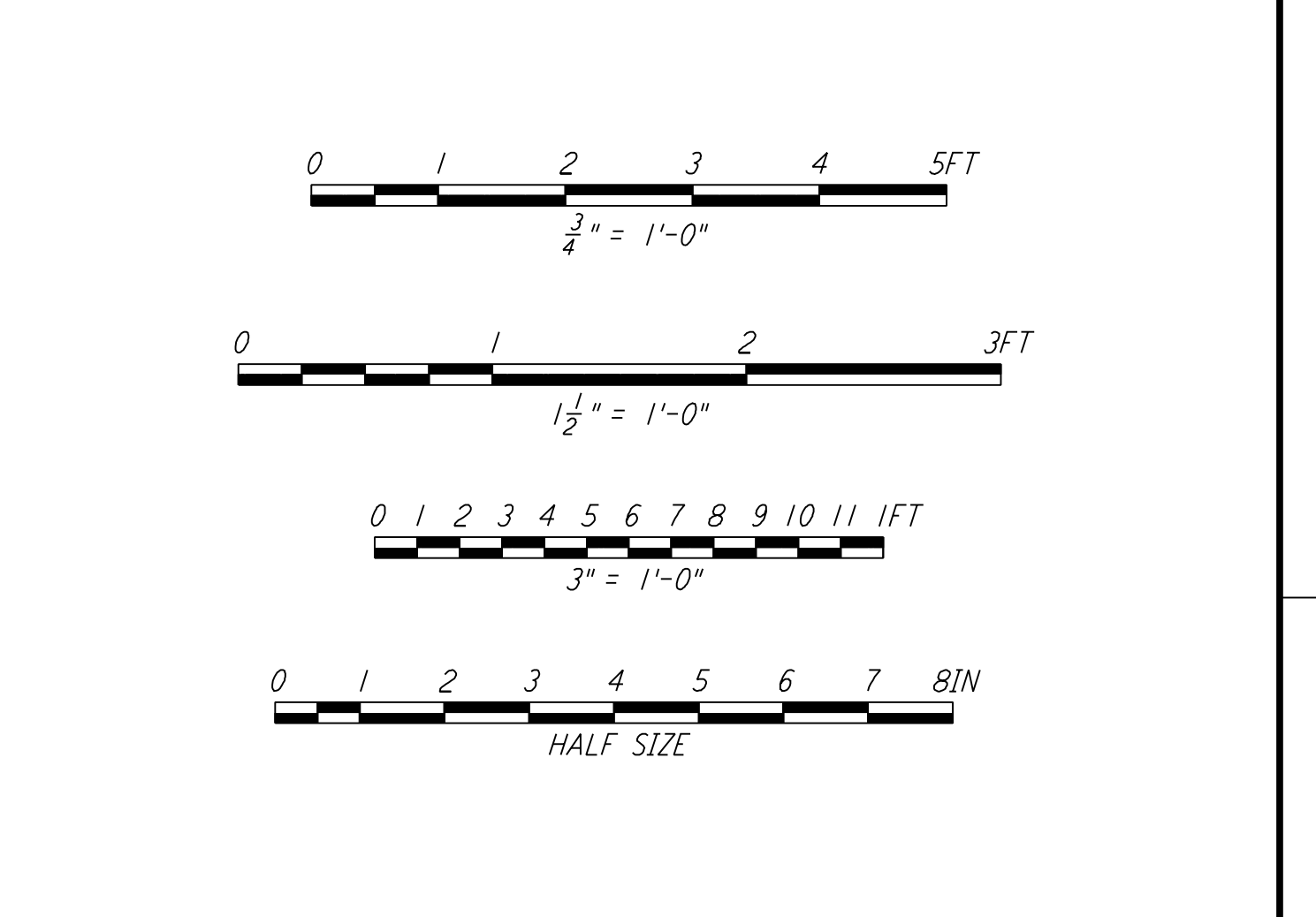
COLUMN ENCLOSURE (13) REF
 3"=1'-0" LA-A-421 LA-A-163



METAL WALL PANEL SILL (9) REF
 3"=1'-0" LA-A-421 LA-A-163 LA-A-161



INSIDE CORNER FLASHING (5) REF
 HALF FULL LA-A-421 LA-A-102 LA-A-105



NO.	DATE	BY	CHKD	ENGR	PROJ	DESCRIPTION
1	08-07-98	SJM				ISSUED FOR AS-BUILT

NO.	DATE	BY	CHKD	ENGR	PROJ	DESCRIPTION
1	08-07-98	SJM				ISSUED FOR AS-BUILT

NO.	DATE	BY	CHKD	ENGR	PROJ	DESCRIPTION
1	08-07-98	SJM				ISSUED FOR AS-BUILT

NO.	DATE	BY	CHKD	ENGR	PROJ	DESCRIPTION
1	08-07-98	SJM				ISSUED FOR AS-BUILT

NO.	DATE	BY	CHKD	ENGR	PROJ	DESCRIPTION
1	08-07-98	SJM				ISSUED FOR AS-BUILT

This document and the design it covers are the property of PARSONS. They are loaned only with the borrower's expressed written agreement that they will not be reproduced, copied, loaned, exhibited, or used in any other way, except by written consent from PARSONS to the borrower.

LIGO-D960898-01-O



LASER INTERFEROMETER GRAVITATIONAL-WAVE OBSERVATORY SITE NO. 2 - LIVINGSTON, LOUISIANA	
TITLE	ARCHITECTURAL EXTERIOR WALL DETAILS
SCALE	AS NOTED
CONTRACT NUMBER	PP150969
PROJECT NUMBER	8094
SHEET NUMBER	LA-A-421
REVISIONS	

100 WEST WALNUT STREET
 PASADENA, CALIFORNIA

CALIFORNIA INSTITUTE OF TECHNOLOGY
 MASSACHUSETTS INSTITUTE OF TECHNOLOGY