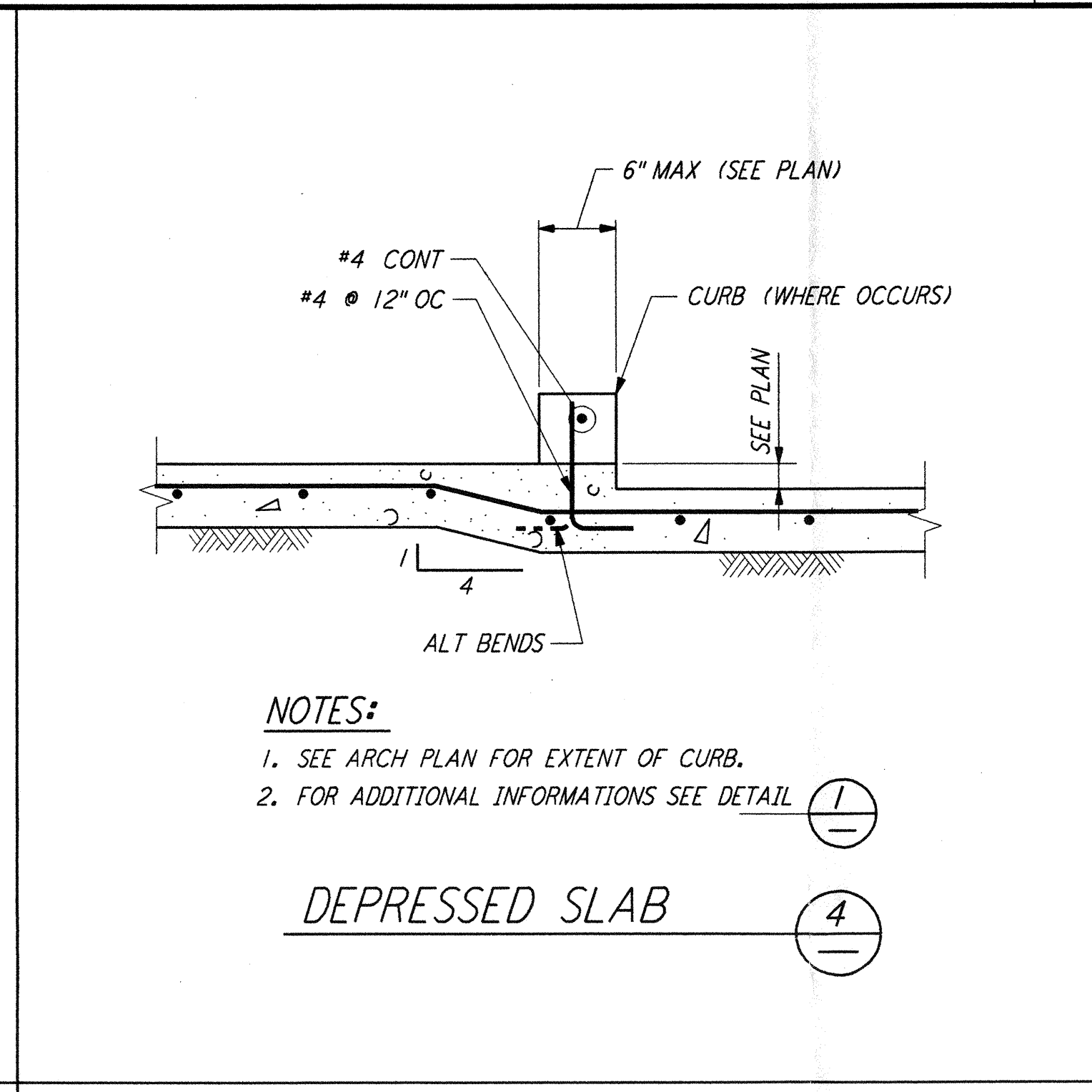
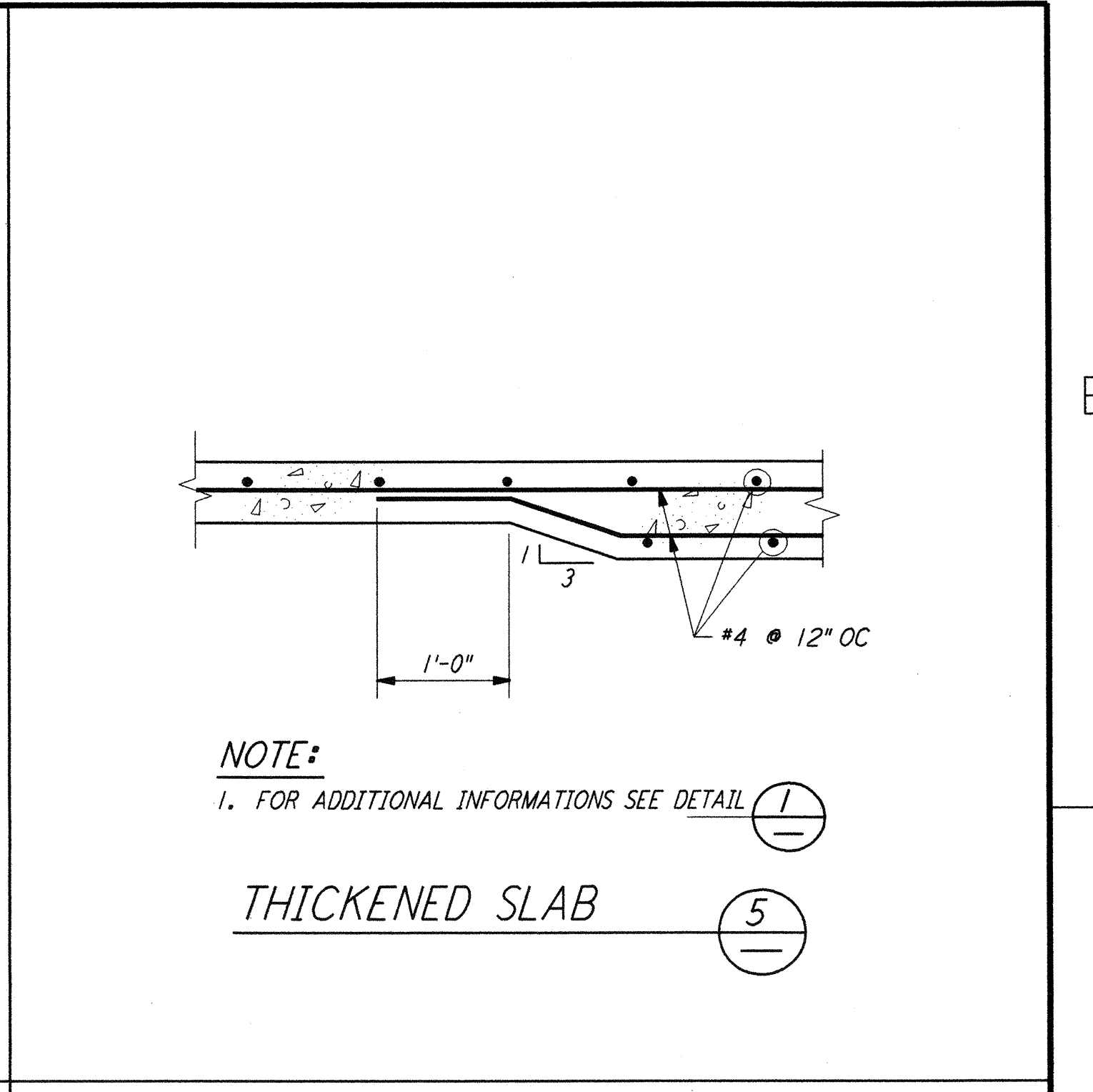


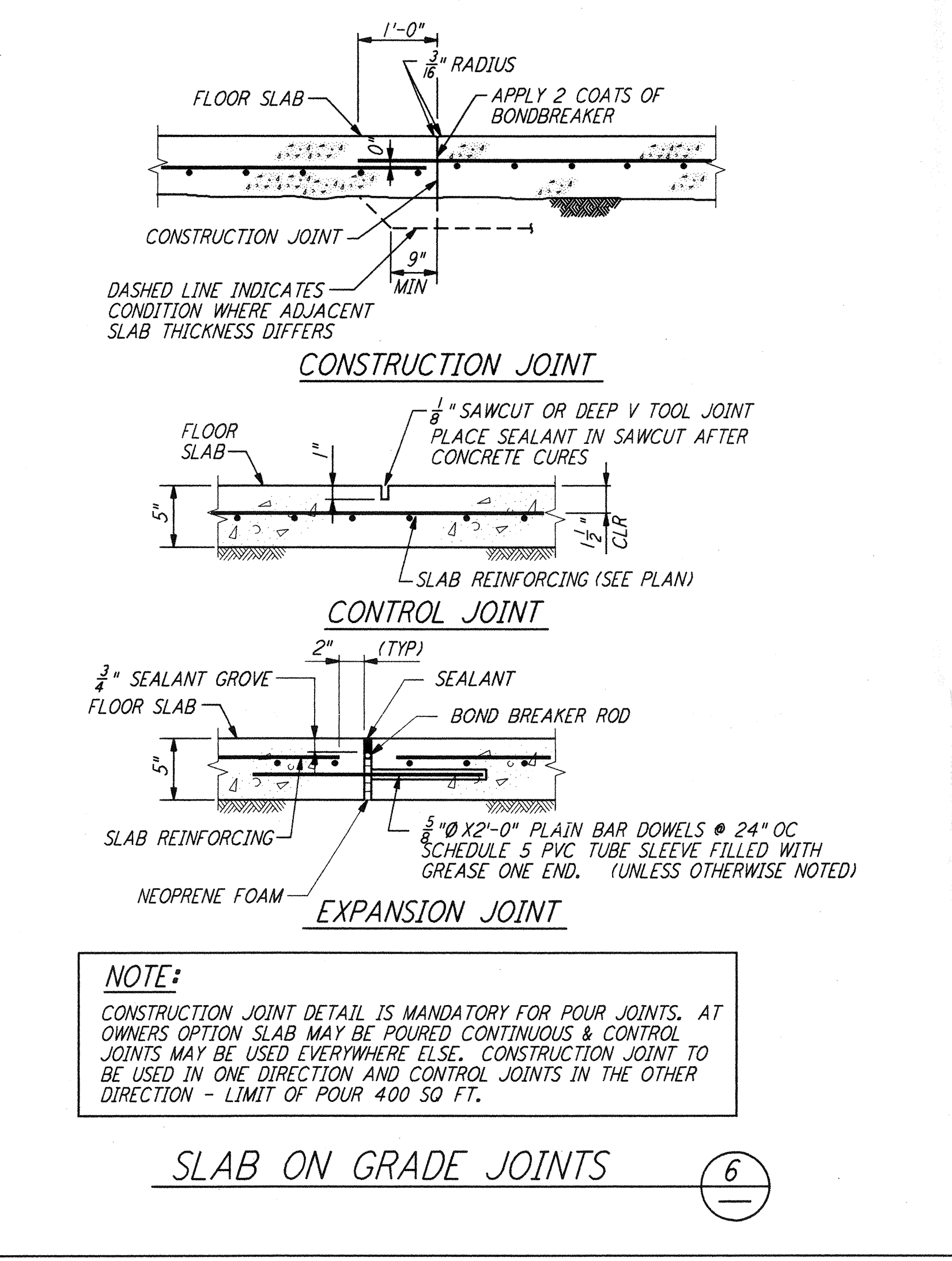
SLAB ON GRADE EDGE (1)



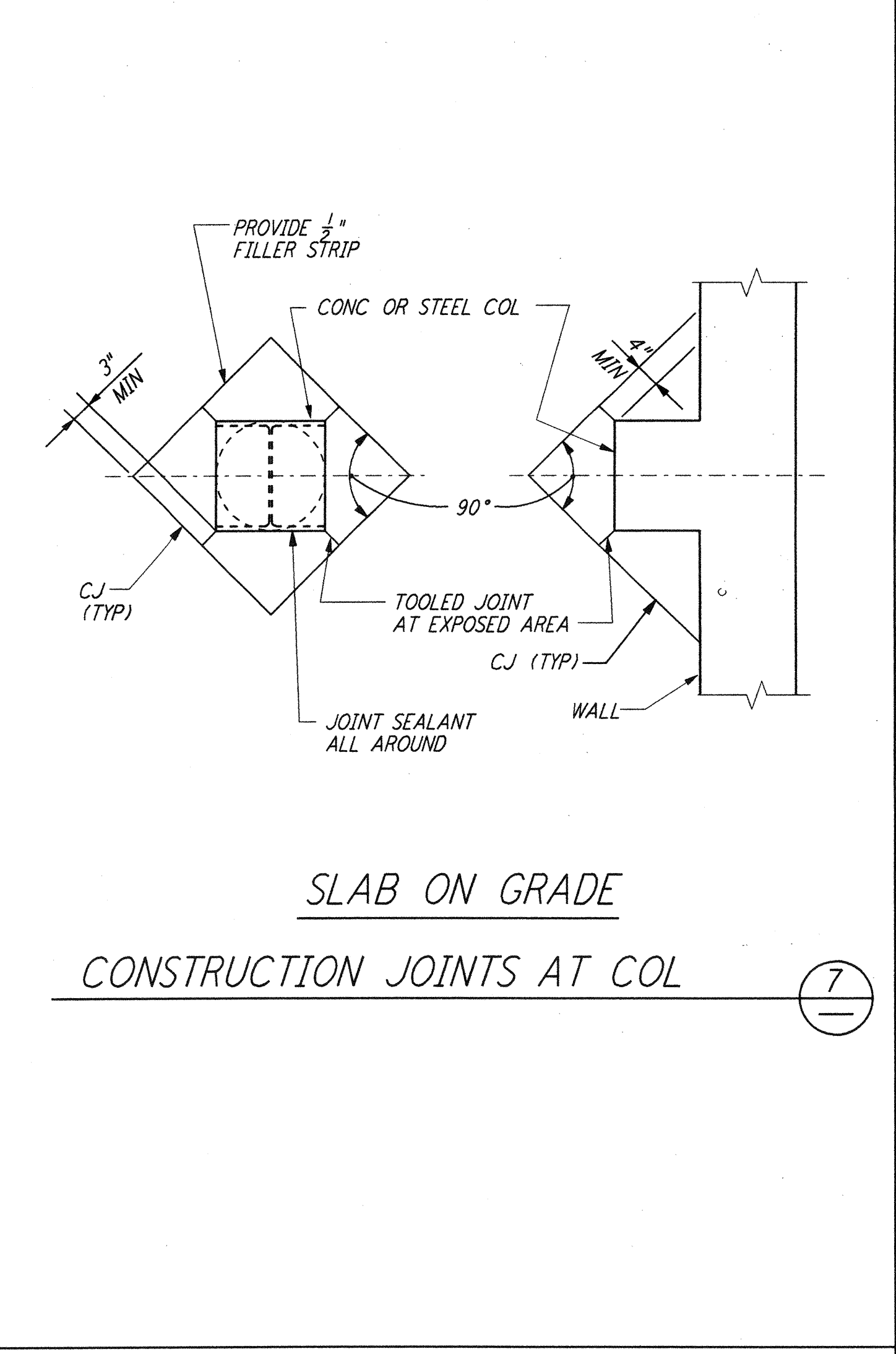
DEPRESSED SLAB (4)



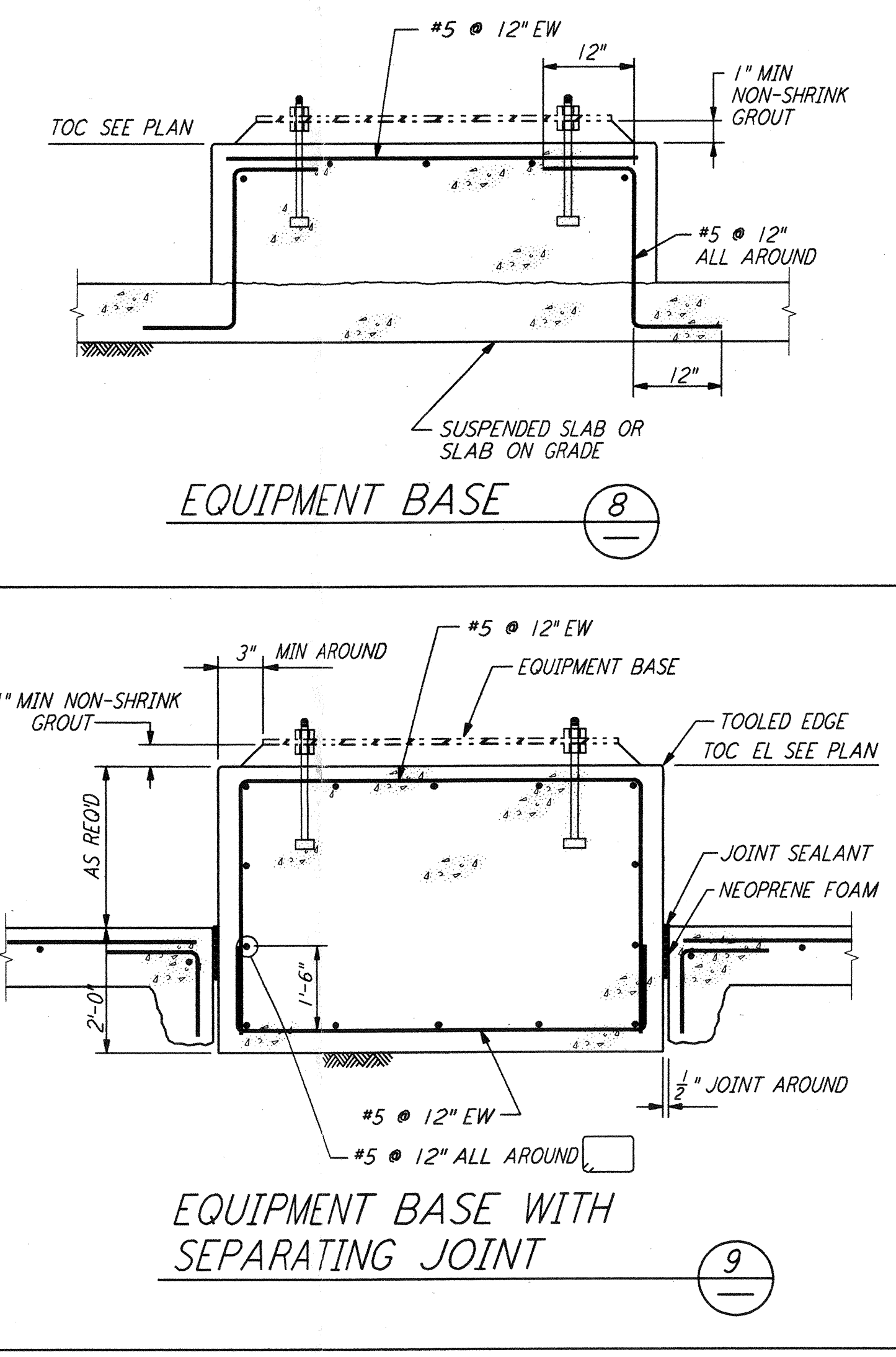
THICKENED SLAB (5)



SLAB ON GRADE JOINTS (6)

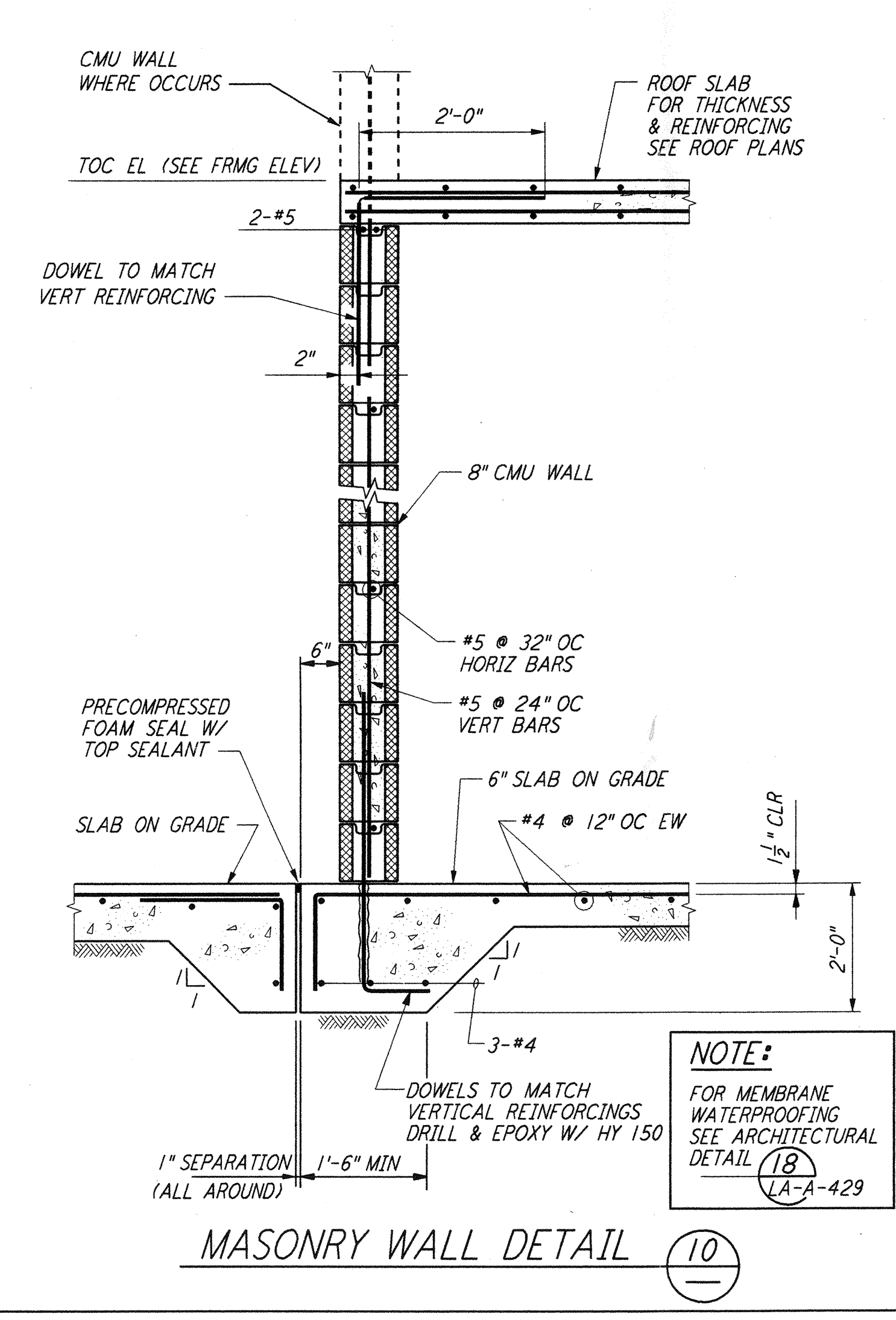


CONSTRUCTION JOINTS AT COL (7)

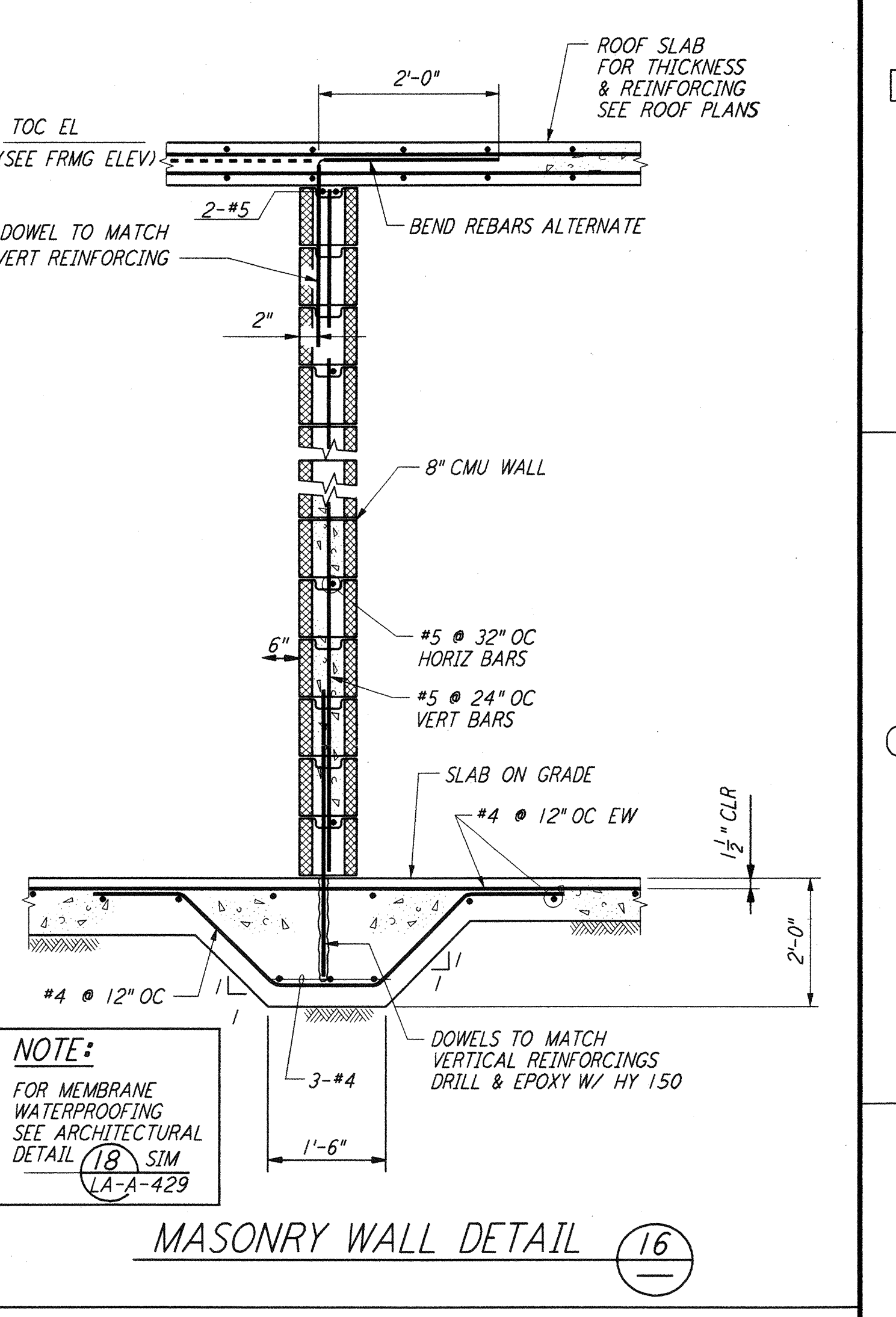


EQUIPMENT BASE (8)

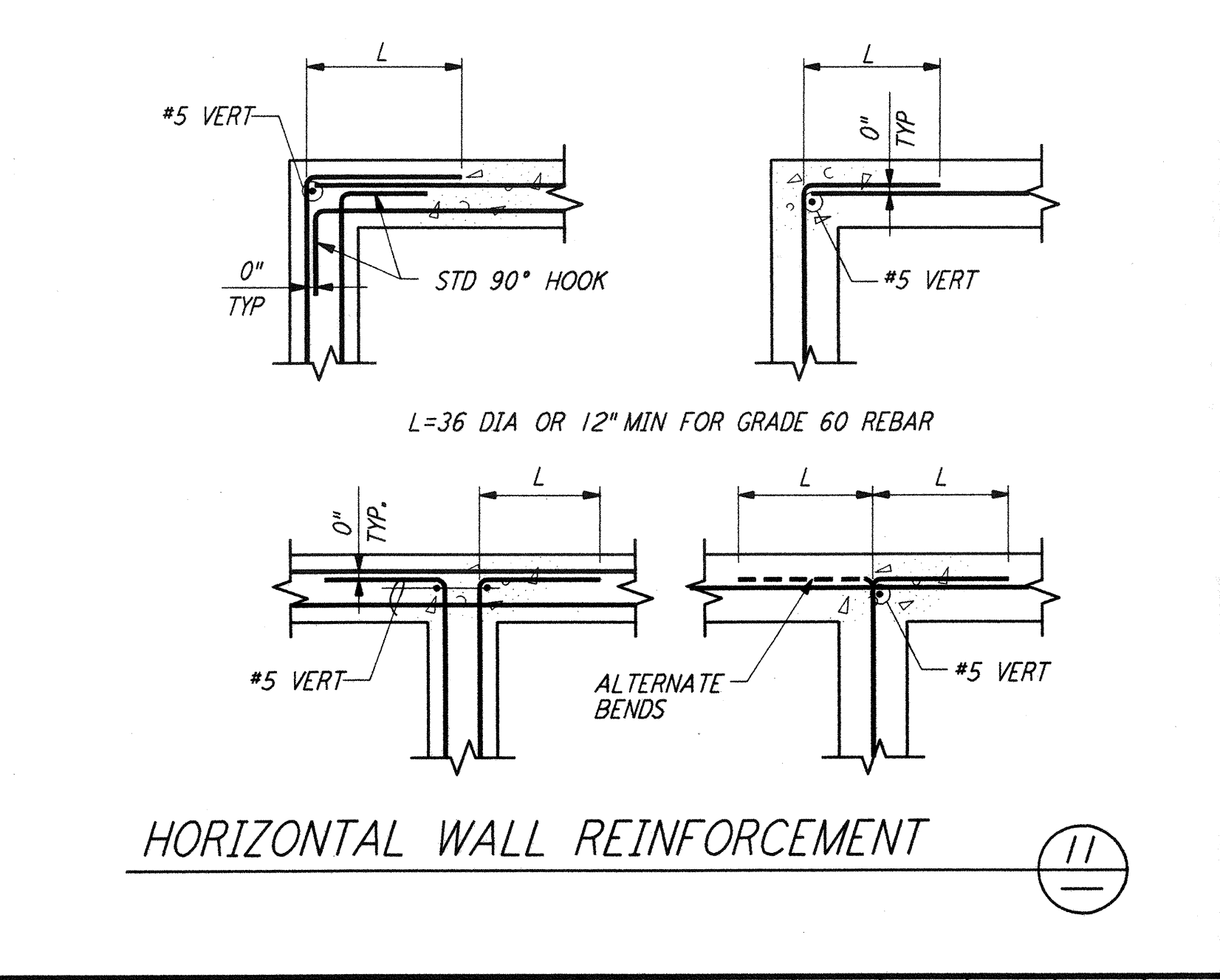
EQUIPMENT BASE WITH SEPARATING JOINT (9)



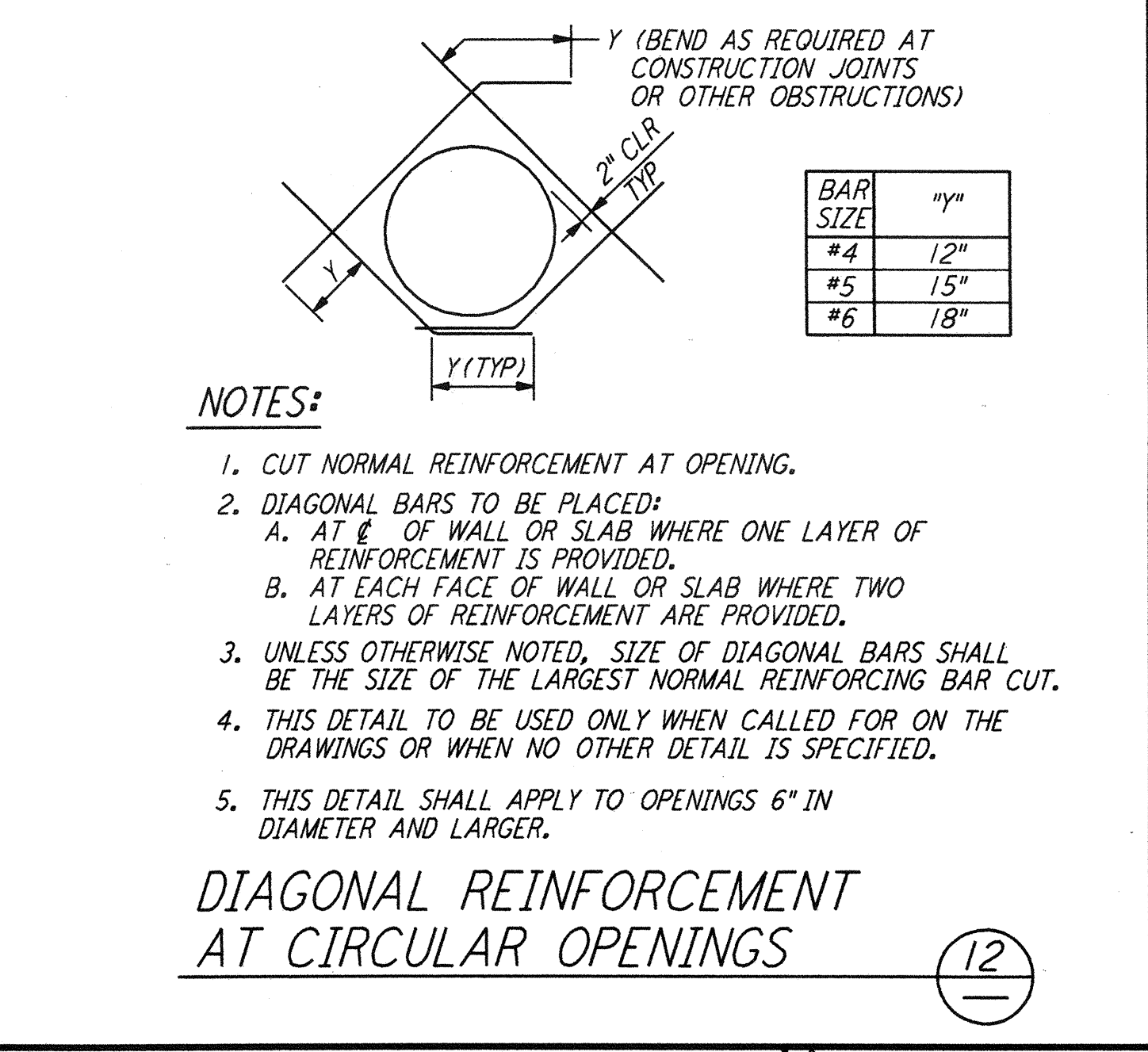
MASONRY WALL DETAIL (10)



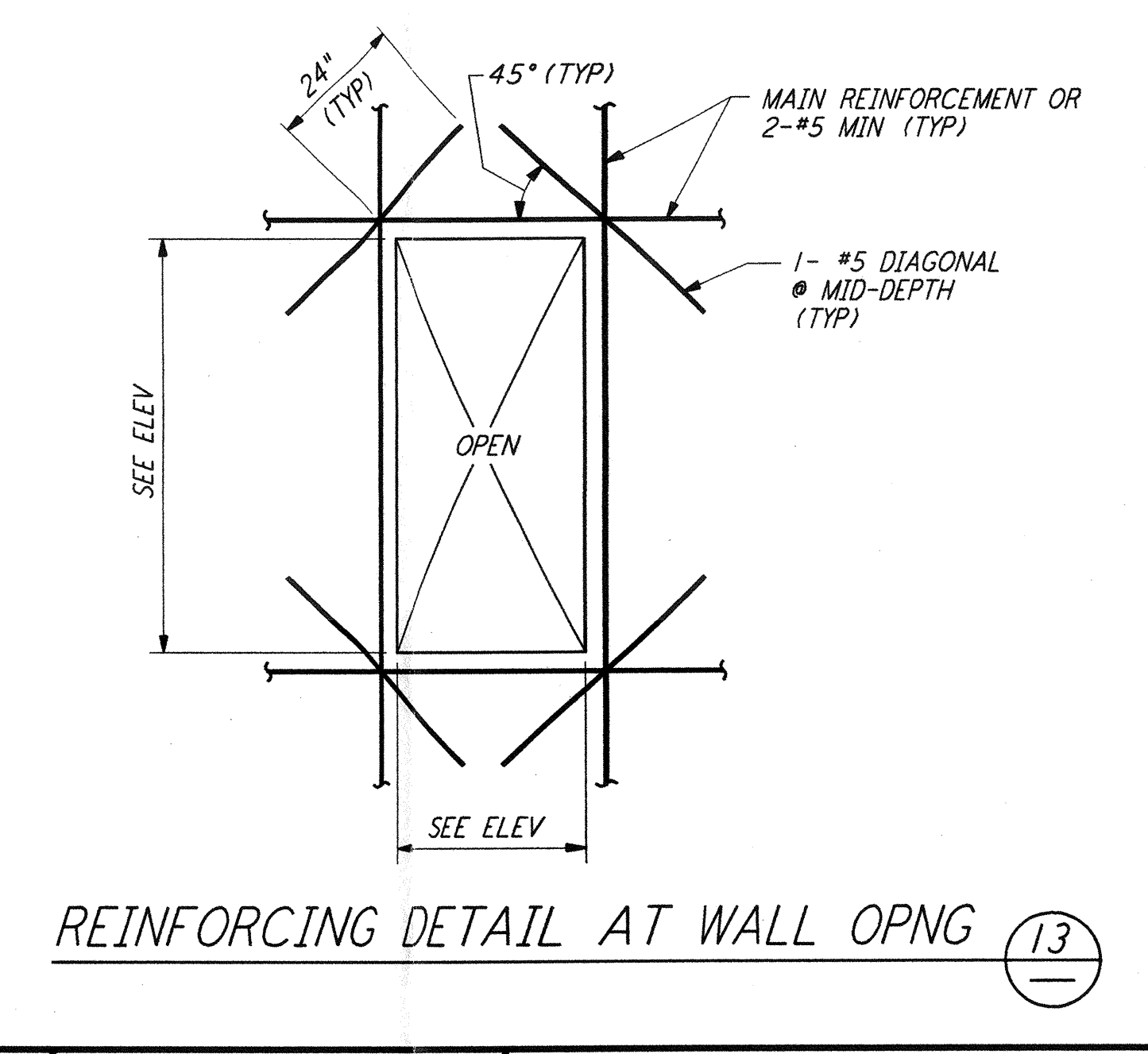
MASONRY WALL DETAIL (16)



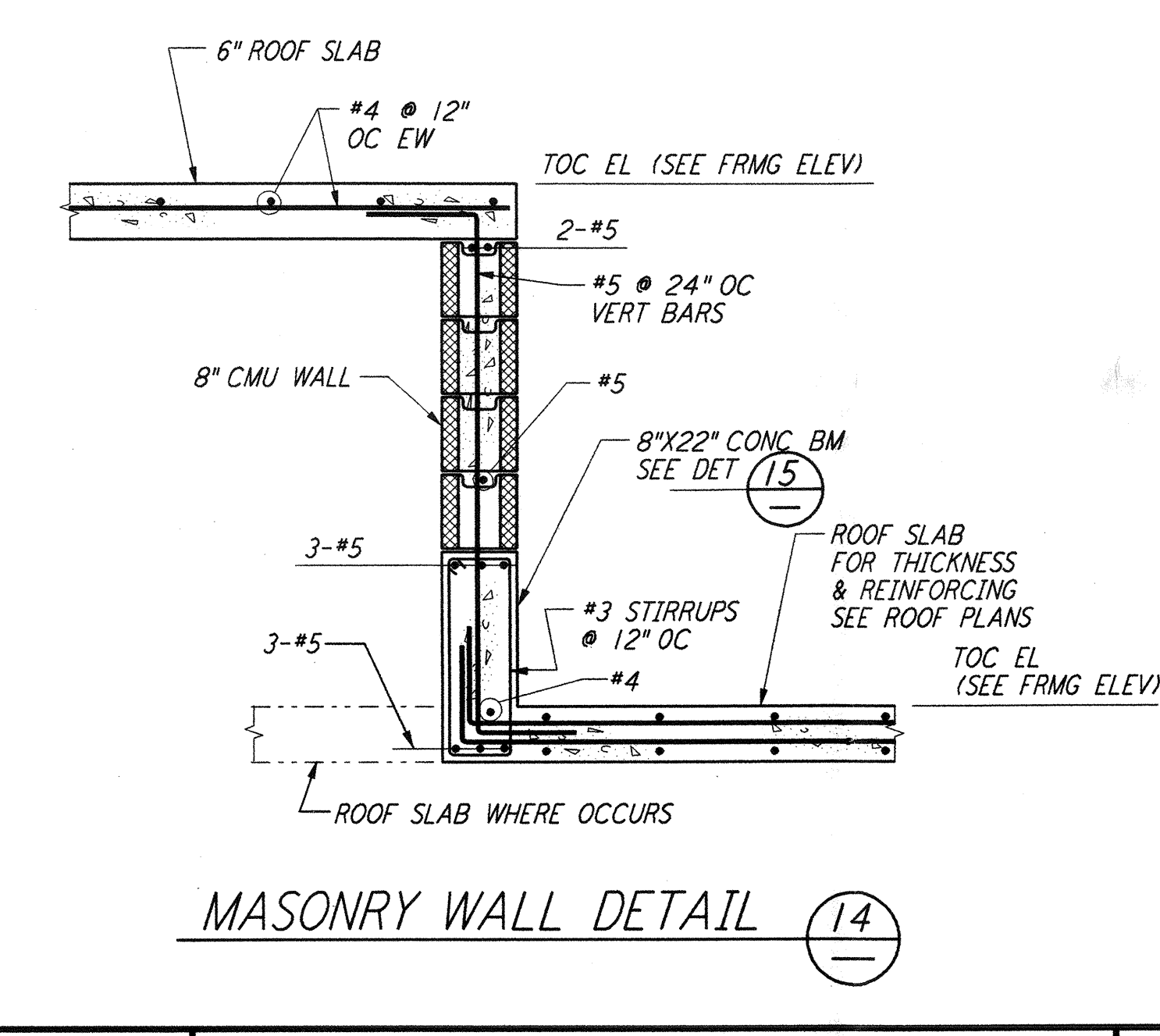
HORIZONTAL WALL REINFORCEMENT (11)



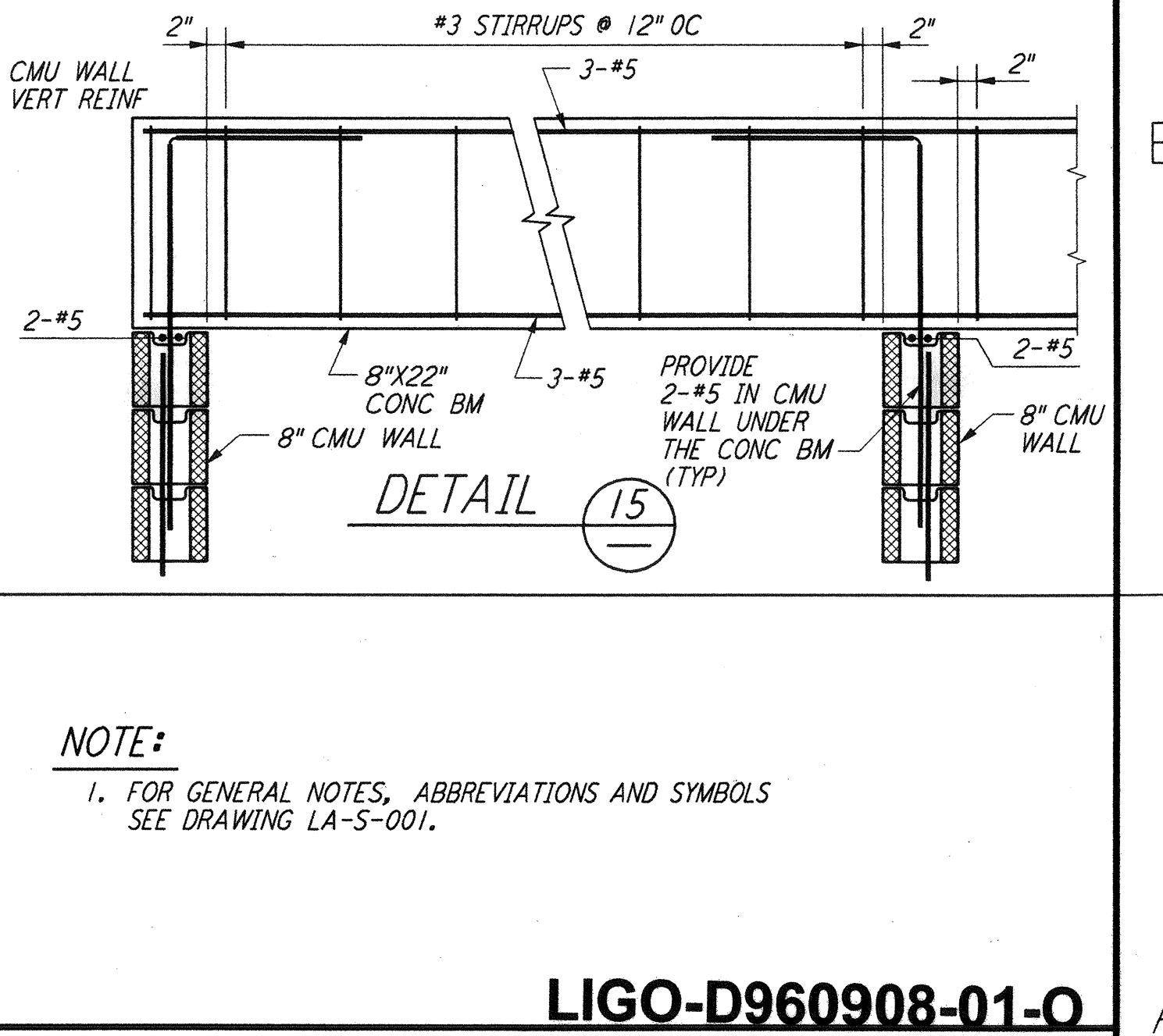
DIAGONAL REINFORCEMENT AT CIRCULAR OPENINGS (12)



REINFORCING DETAIL AT WALL OPNG (13)



MASONRY WALL DETAIL (14)



DETAIL (15)

NO.	DATE	BY	CHKD	ENGR	PROJ	DESCRIPTION
1	08-07-98	WA	DM	DM	WV	ISSUED FOR AS-BUILT

ISSUED FOR CONSTRUCTION		
DRAWN	MCS	11-15-96
CHECKED	DDM	11-15-96
ENGINEER	BP	11-15-96
PROJ	TDM	11-15-96

AS-BUILT DRAWINGS

PARSONS
 100 WEST WALNUT STREET
 PASADENA, CALIFORNIA

LIGO
 CALIFORNIA INSTITUTE OF TECHNOLOGY
 MASSACHUSETTS INSTITUTE OF TECHNOLOGY

LIGO-D960908-01-0
 LASER INTERFEROMETER
 GRAVITATIONAL-WAVE OBSERVATORY
 SITE NO. 2 - LIVINGSTON, LOUISIANA

TITLE	SCALE	CONTRACT NUMBER	PROJECT NUMBER
STRUCTURAL STANDARD CONCRETE DETAILS SHEET 1	NONE	PP150969	8094
SHEET NUMBER	REVISIONS		
LA-S-002			

This document and the design it covers are the property of PARSONS. They are loaned only with the borrower's expressed written agreement that they will not be reproduced, copied, loaned, exhibited, or used in any other way, except by written consent from PARSONS to the borrower.