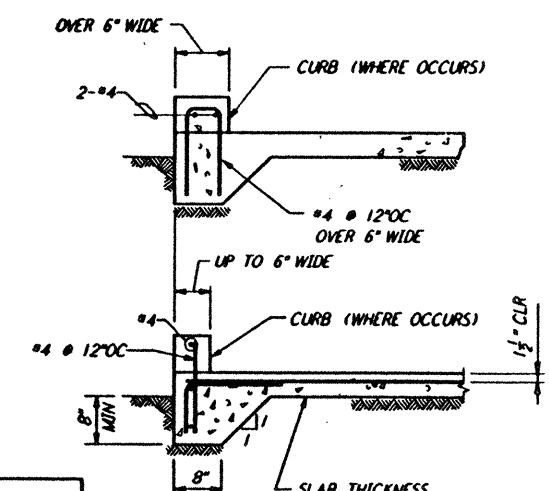


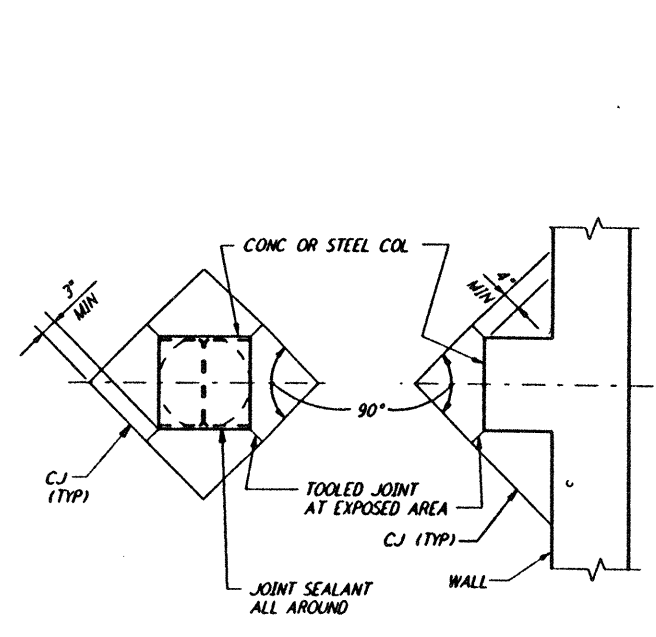
5



NOTE:
 FOR MEMBRANE WATERPROOFING SEE ARCHITECTURAL DETAIL (17) LA-A-429

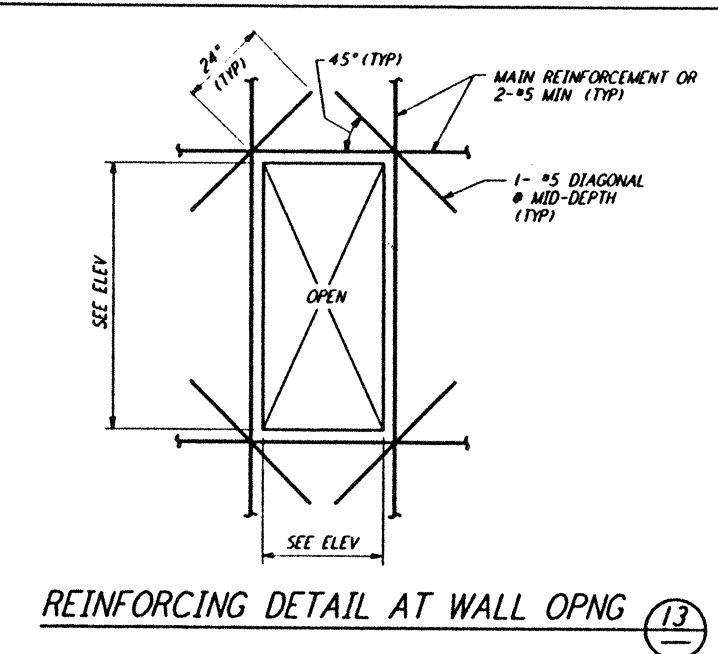
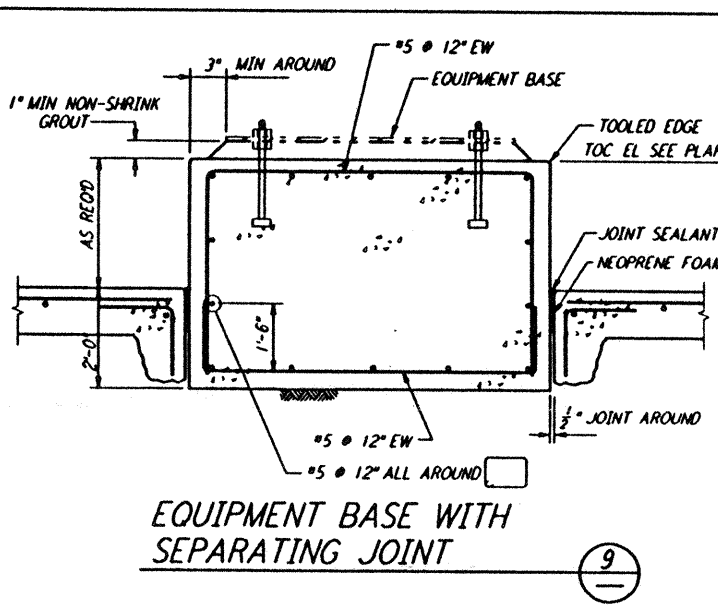
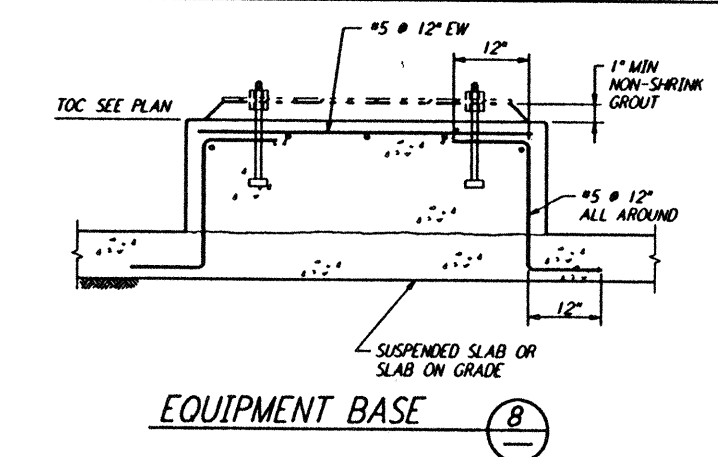
SLAB ON GRADE EDGE (1)

4



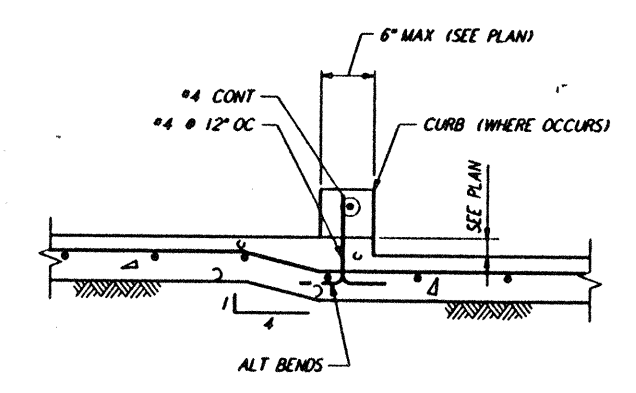
CONSTRUCTION JOINTS AT COL (7)

3



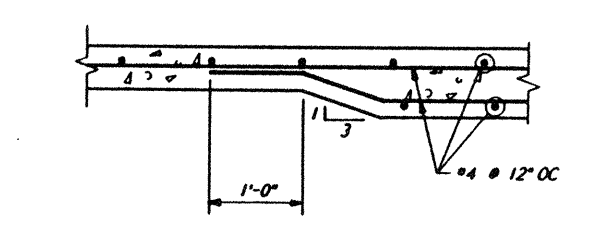
REINFORCING DETAIL AT WALL OPNG (13)

2



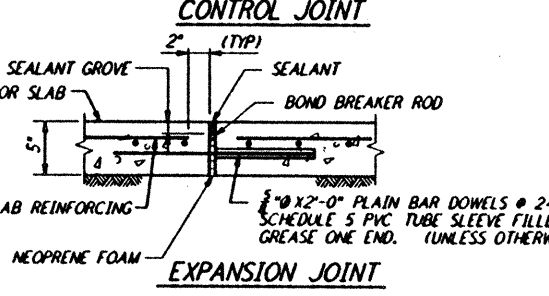
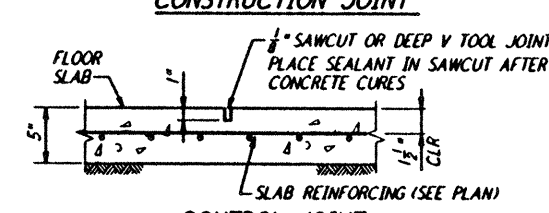
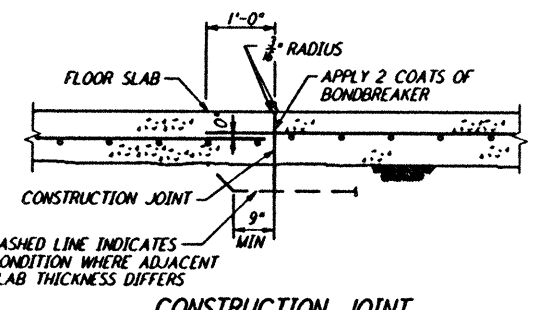
NOTES:
 1. SEE ARCH PLAN FOR EXTENT OF CURB.
 2. FOR ADDITIONAL INFORMATION SEE DETAIL (1)

DEPRESSED SLAB (4)



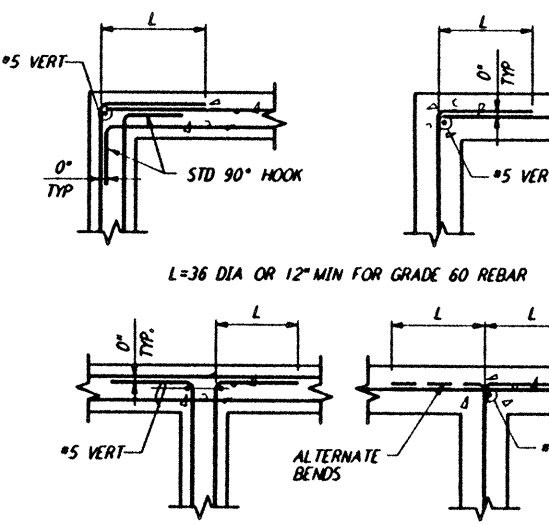
NOTE:
 1. FOR ADDITIONAL INFORMATION SEE DETAIL (1)

THICKENED SLAB (5)

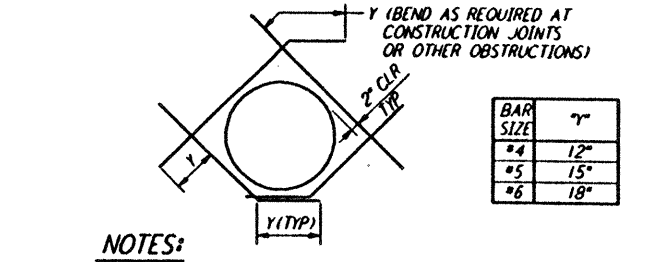


NOTE:
 CONSTRUCTION JOINT DETAIL IS MANDATORY FOR POUR JOINTS. AT OWNERS OPTION SLAB MAY BE POURED CONTINUOUS & CONTROL JOINTS MAY BE USED EVERYWHERE ELSE. CONSTRUCTION JOINT TO BE USED IN ONE DIRECTION AND CONTROL JOINTS IN THE OTHER DIRECTION - LIMIT OF POUR 400 SQ FT.

SLAB ON GRADE JOINTS (6)

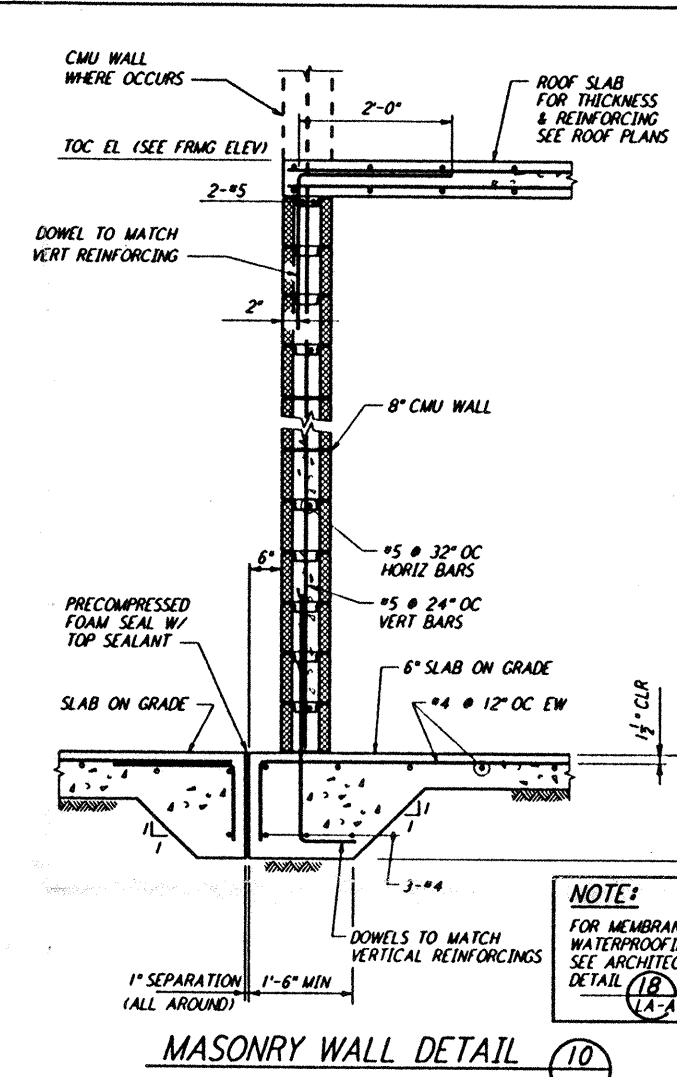


HORIZONTAL WALL REINFORCEMENT (11)

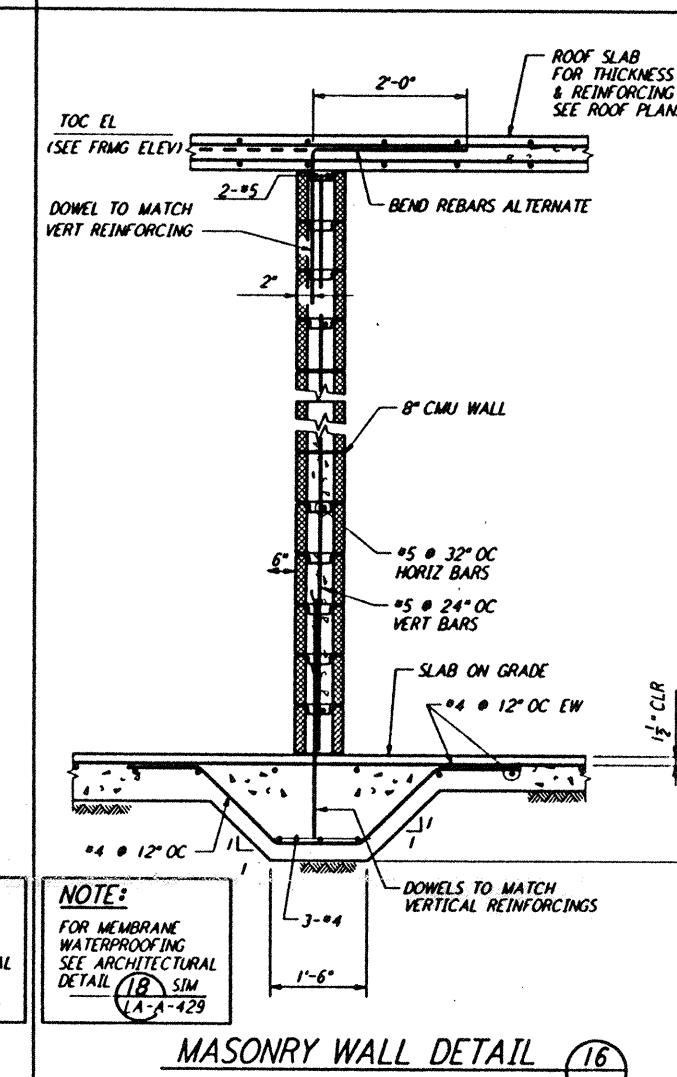


NOTES:
 1. CUT NORMAL REINFORCEMENT AT OPENING.
 2. DIAGONAL BARS TO BE PLACED:
 A. AT 1/4 OF WALL OR SLAB WHERE ONE LAYER OF REINFORCEMENT IS PROVIDED.
 B. AT EACH FACE OF WALL OR SLAB WHERE TWO LAYERS OF REINFORCEMENT ARE PROVIDED.
 3. UNLESS OTHERWISE NOTED, SIZE OF DIAGONAL BARS SHALL BE THE SIZE OF THE LARGEST NORMAL REINFORCING BAR CUT.
 4. THIS DETAIL TO BE USED ONLY WHEN CALLED FOR ON THE DRAWINGS OR WHEN NO OTHER DETAIL IS SPECIFIED.
 5. THIS DETAIL SHALL APPLY TO OPENINGS 6" IN DIAMETER AND LARGER.

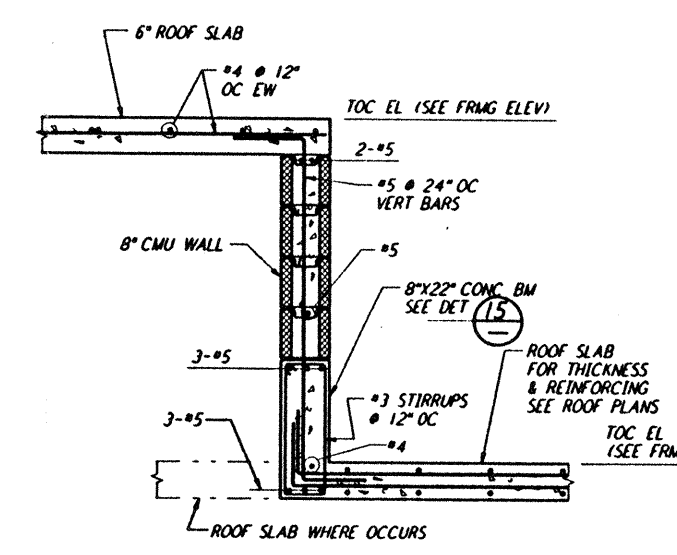
DIAGONAL REINFORCEMENT AT CIRCULAR OPENINGS (12)



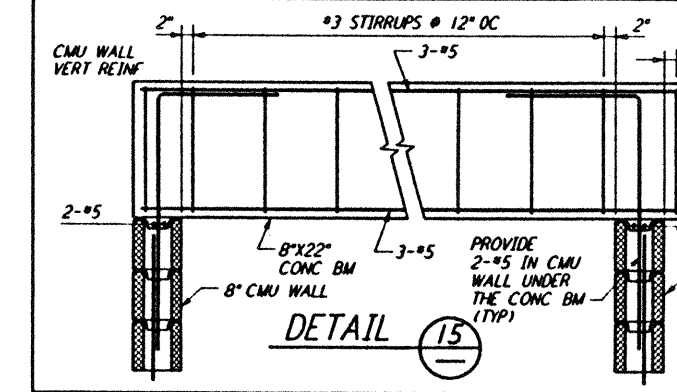
MASONRY WALL DETAIL (10)



MASONRY WALL DETAIL (16)



MASONRY WALL DETAIL (14)



DETAIL (15)

NOTE:
 1. FOR GENERAL NOTES, ABBREVIATIONS AND SYMBOLS SEE DRAWING LA-S-001.

Mon Jul 22 16:42:22 1996 s3-v18b2 J:\PLOTS\QUEUES\18B2\ST002.PRF
 This document and the design it covers are the property of PARSONS. They are loaned only with the borrower's expressed written agreement that they will not be reproduced, copied, loaned, exhibited, or used in any other way, except by written consent from PARSONS to the borrower.

NO.	DATE	BY	CHKD	ENGR	PROJ	DESCRIPTION
C	7-24-96	MCS	DDM	BP	TDM	ISSUED FOR BID
B	6-14-96	MCS	DDM	BP	TDM	FINAL DESIGN REVIEW
A	10-31-95	MCS	DDM	BP	TDM	PRELIMINARY DESIGN REVIEW

DRAWN	MCS
CHECKED	
ENGINEER	
PROJ	

PARSONS
 100 WEST WALNUT STREET
 PASADENA, CALIFORNIA

LIGO
 CALIFORNIA INSTITUTE OF TECHNOLOGY
 MASSACHUSETTS INSTITUTE OF TECHNOLOGY

LASER INTERFEROMETER
 GRAVITATIONAL-WAVE OBSERVATORY
 SITE NO. 2 - LIVINGSTON, LOUISIANA

TITLE	SCALE	CONTRACT NUMBER	PROJECT NUMBER
STRUCTURAL STANDARD CONCRETE DETAILS SHEET I	NONE	PP150969	8094
SHEET NUMBER		PROJECT NUMBER	
LA-S-002		8094	

LIGO-D960908-C-O | LIGOLAF.BDR