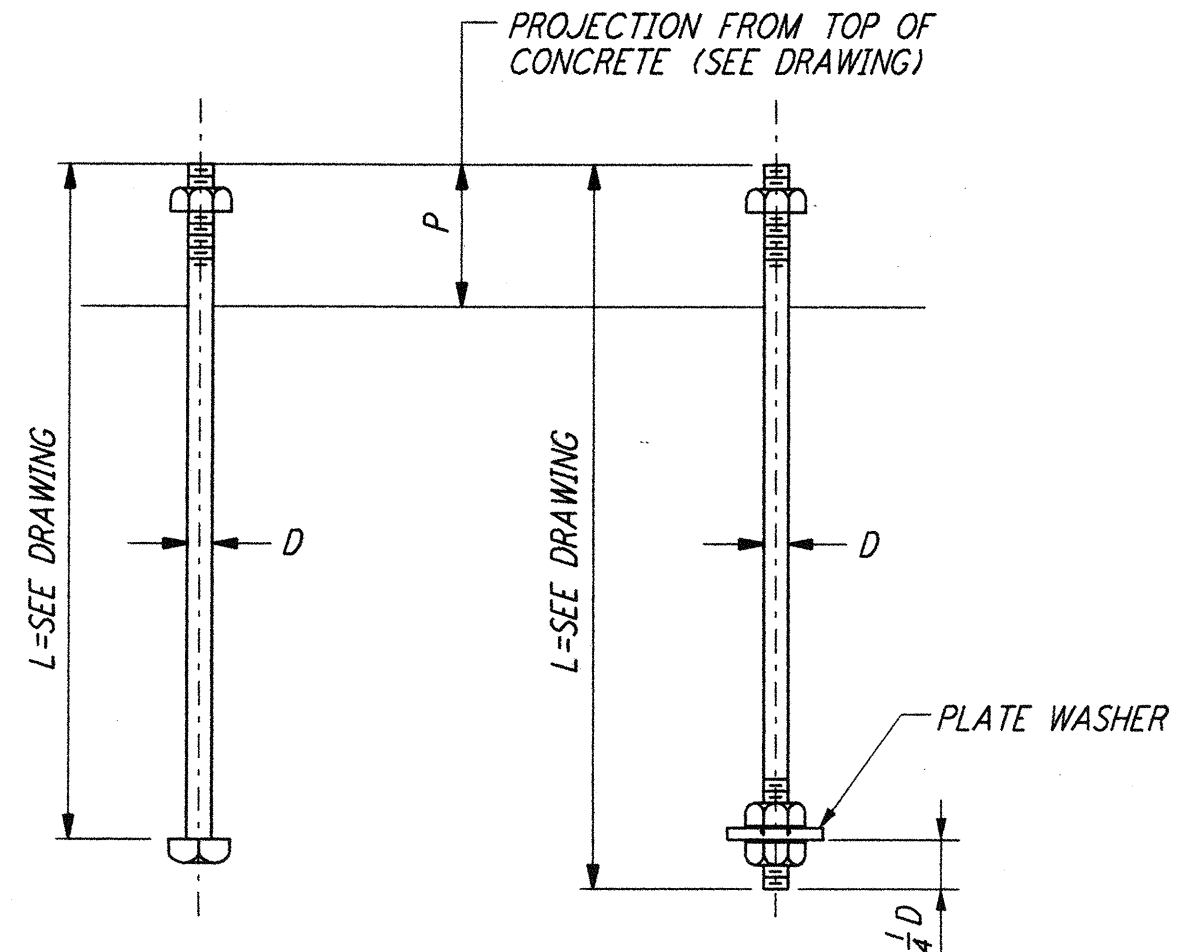


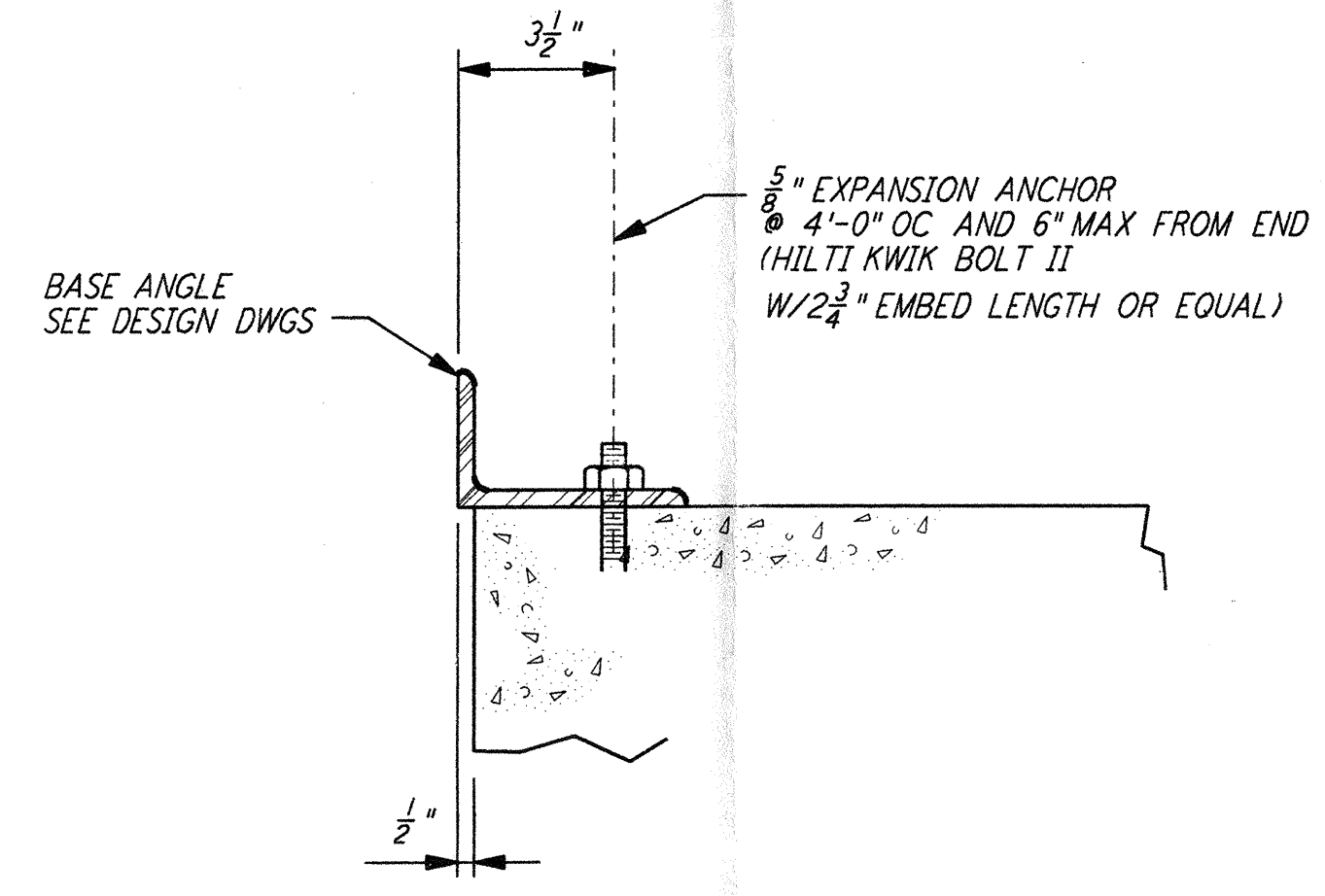
NOTES:

1. BOLT MATERIAL SHALL BE IN ACCORDANCE WITH ASTM A307, UNLESS OTHERWISE SPECIFIED.
2. USE UNIFIED NATIONAL COARSE THREAD, CLASS 2 FIT.
3. USE HEAVY DOUBLE CHAMFER HEX NUTS UP TO 1", AND HEAVY FLAT FACE HEX NUTS LARGER THAN 1".
4. PROVIDE 1 HEX NUT FOR EACH BOLT, UNLESS OTHERWISE NOTED ON DESIGN DRAWINGS.
5. PLATE WASHER MATERIAL SHALL BE ASTM A36, UNLESS OTHERWISE NOTED.
6. FABRICATOR SHALL BUNDLE AND TAG BOLTS BY INDIVIDUAL FOUNDATIONS OR MEMBERS. TAGS SHALL BE WEATHER RESISTANT, WITH MARKS AT LEAST 2" HIGH, AND FIRMLY WIRED TO BUNDLES.
7. SLEEVES SHALL NOT BE USED UNLESS SPECIFIED ON THE DESIGN DRAWINGS.

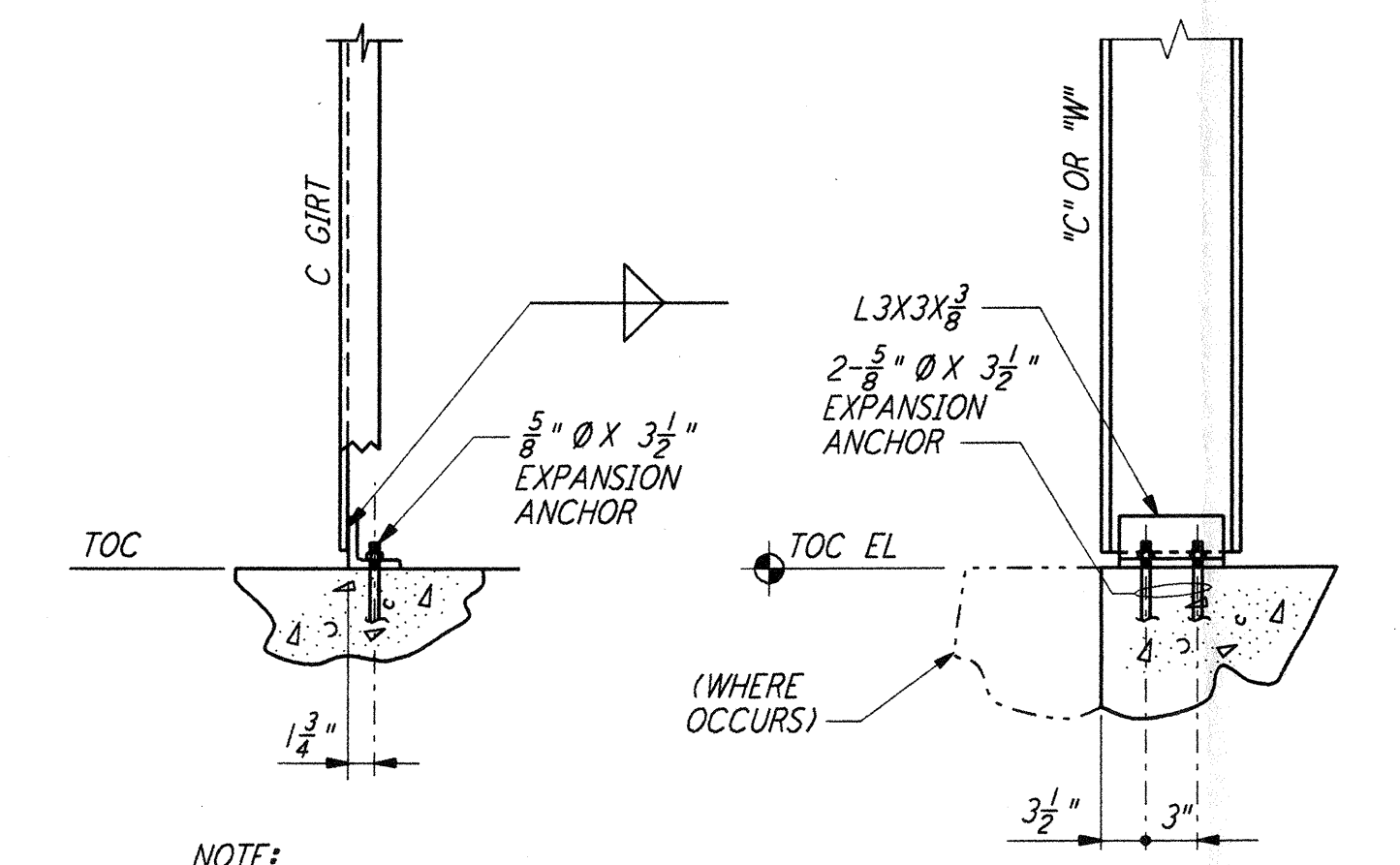
ANCHOR BOLT SCHEDULE				
DIA D	PLATE WASHER	SLEEVE IF REQD		DIA D
		DIA	LENGTH	
1/2"		2"	5"	1 3/4"
3/8"		2"	5"	2 5/8"
3/4"		2"	7"	2 1/2"
7/8"		2"	7"	2 3/8"
1"	2 1/2" X 2 1/2" X 3/8"	3"	10"	3 1/4"
1 1/8"	3" X 3" X 1/2"	3"	10"	3 5/8"
1 1/4"	3 1/2" X 3 1/2" X 1/2"	3"	10"	4"
1 3/8"	3 1/2" X 3 1/2" X 1/2"	4"	15"	4 3/8"
1 1/2"	3 3/4" X 3 3/4" X 5/8"	4"	15"	4 3/4"



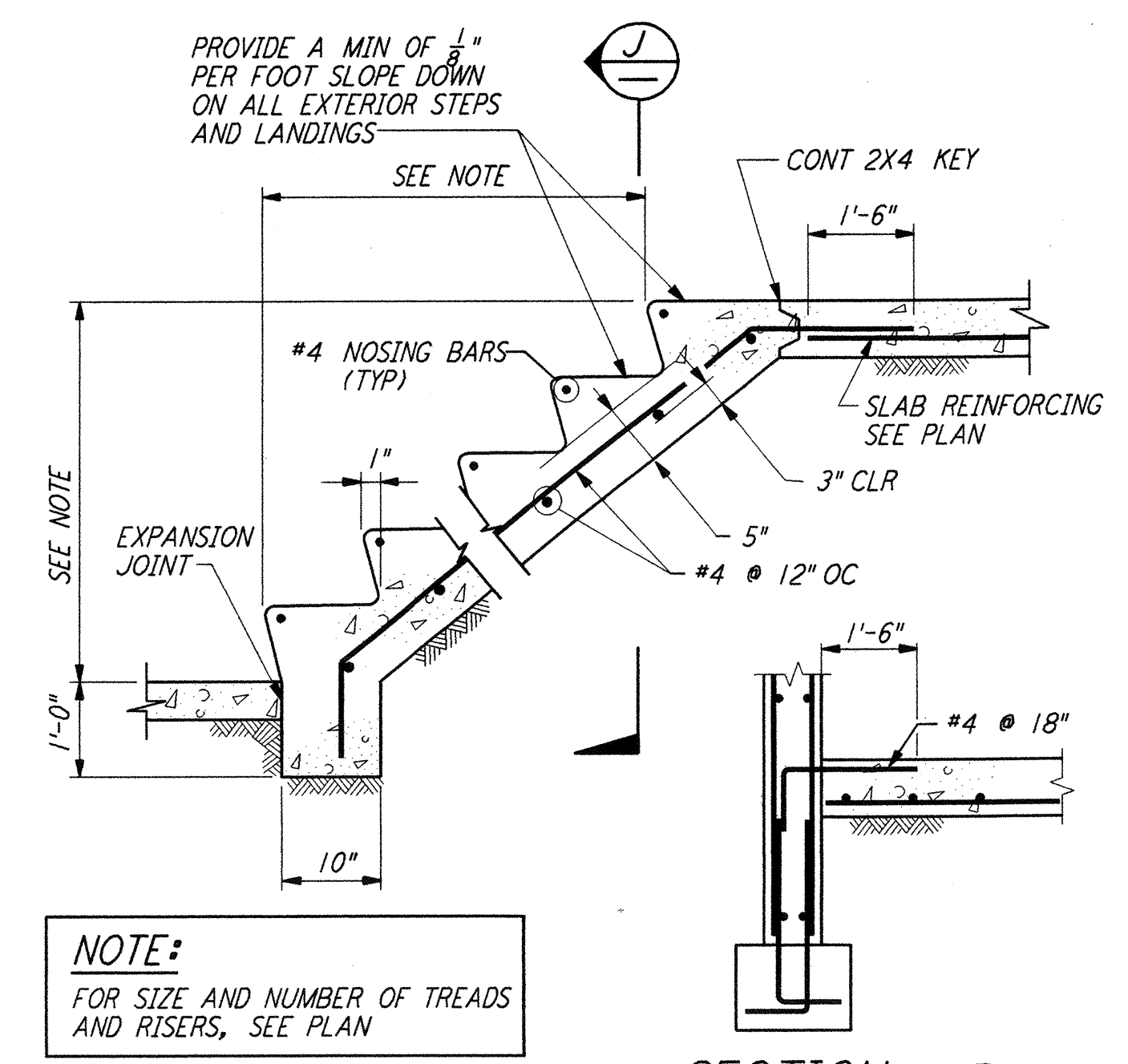
TYPE 1 TYPE 2
 ANCHOR BOLTS DETAILS (1)



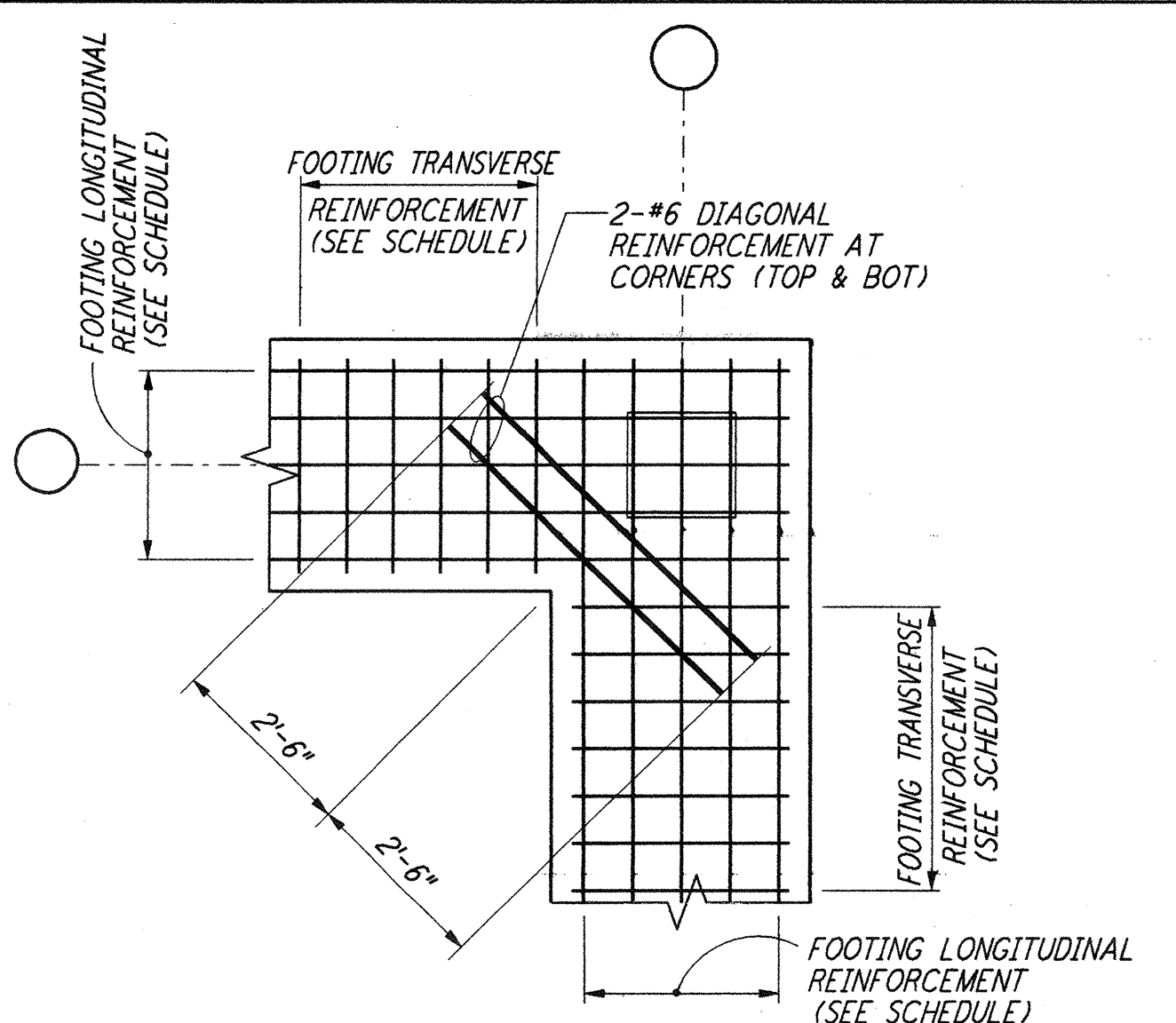
BASE ANGLE CONNECTION
 SECTION A



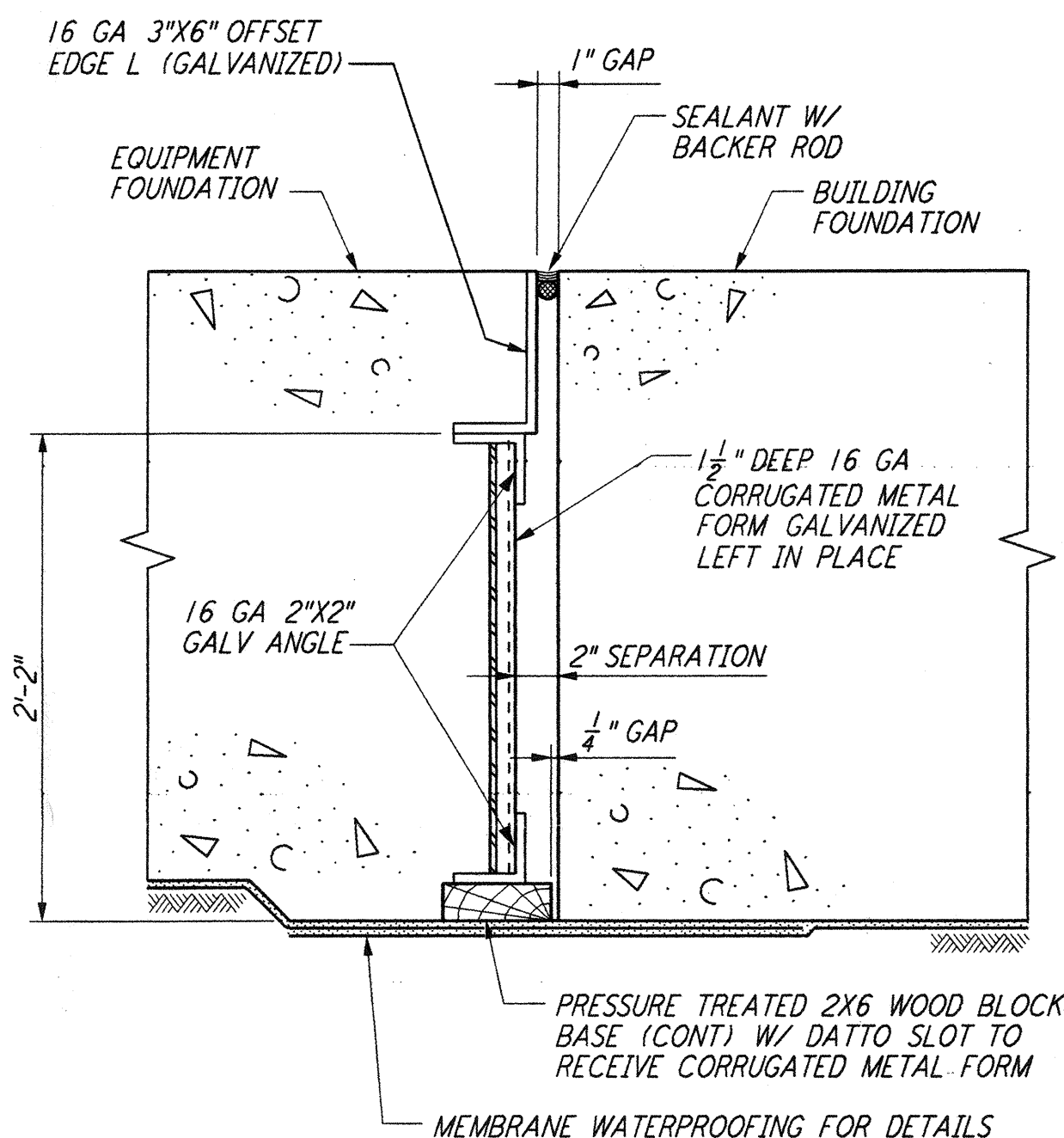
FRONT VIEW SIDE VIEW
 DETAIL 2



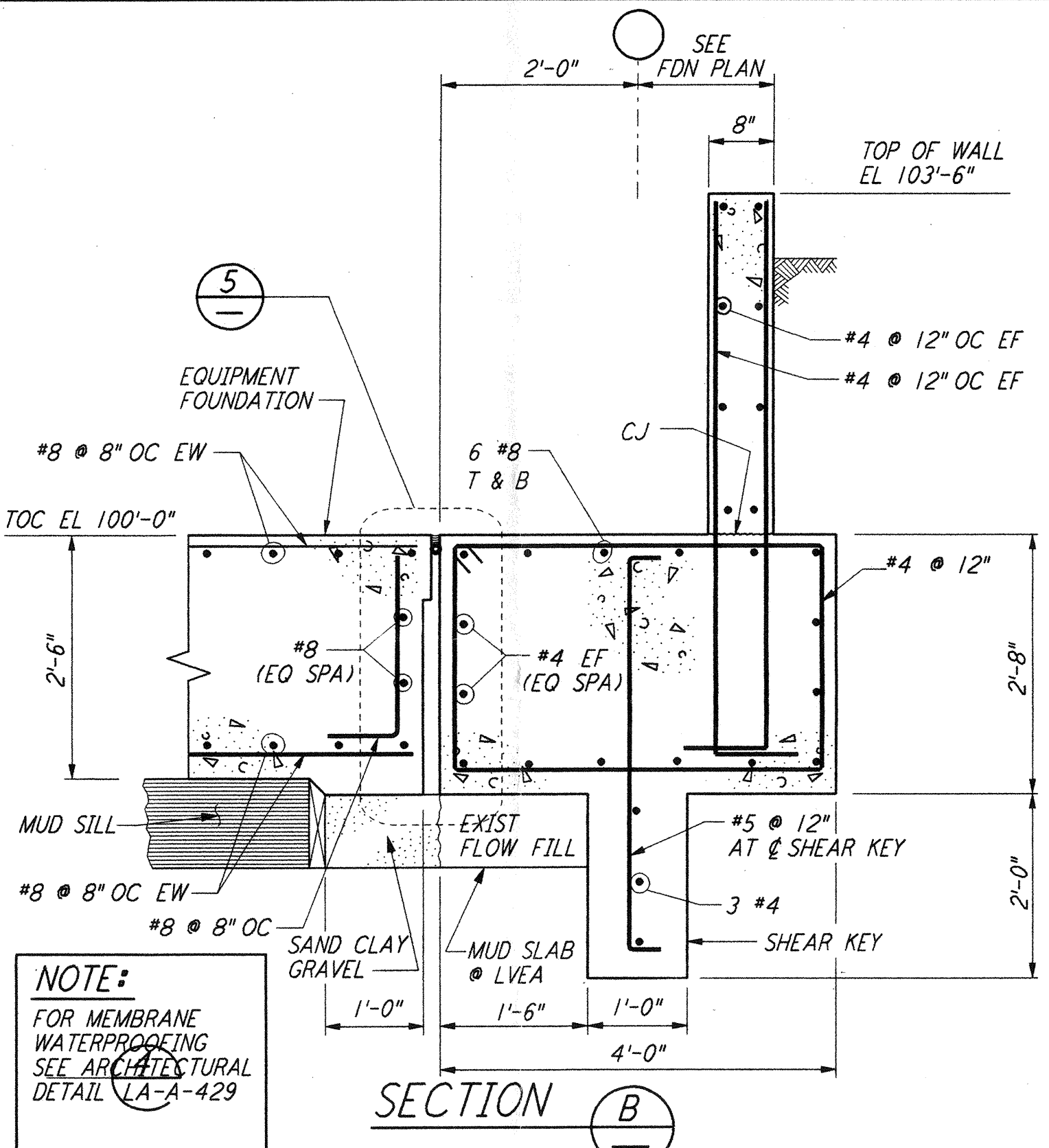
CONCRETE STAIRS ON GRADE (3)



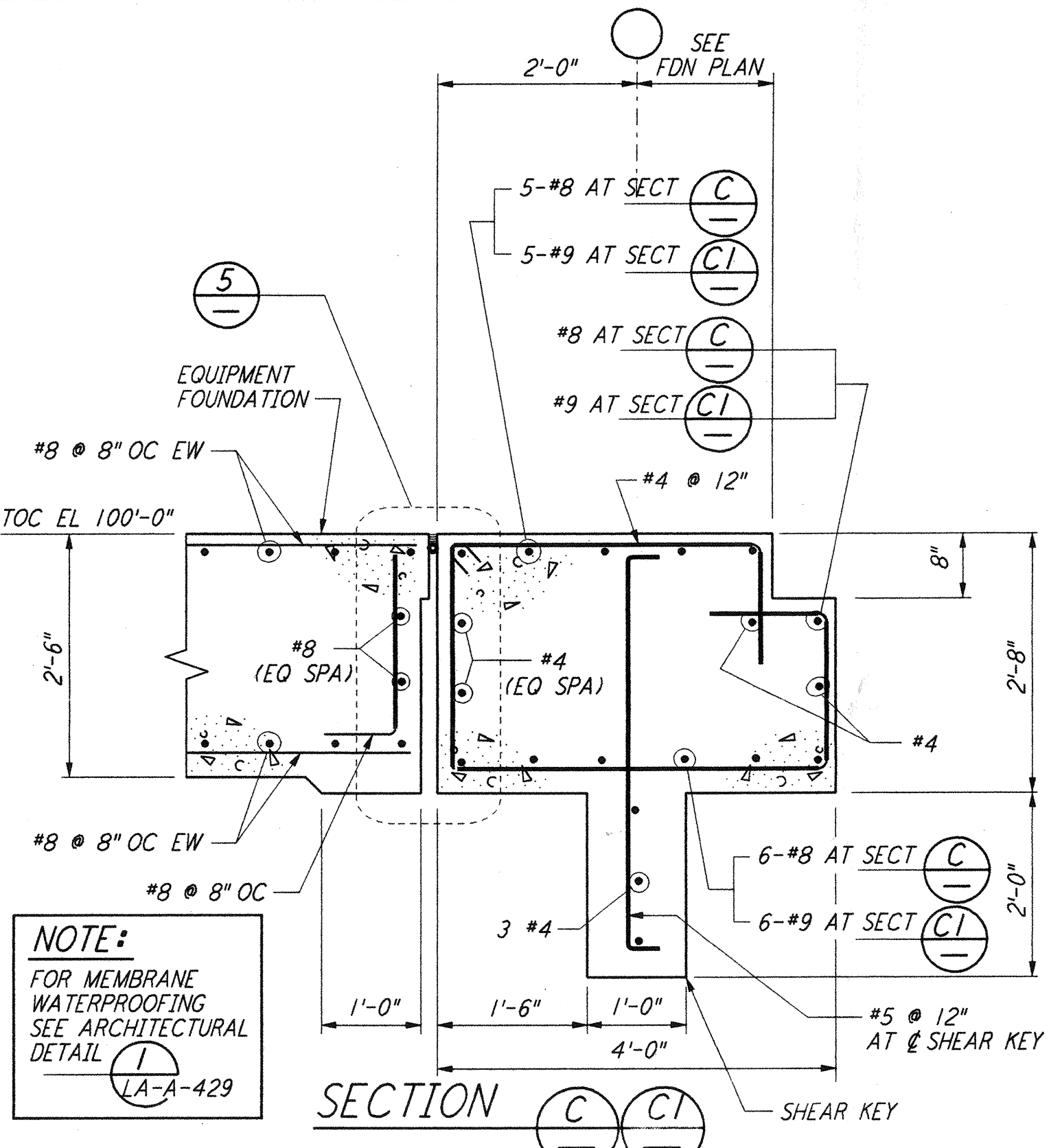
FOOTING DIAGONAL REINFORCEMENT AT CORNERS
 DETAIL 4



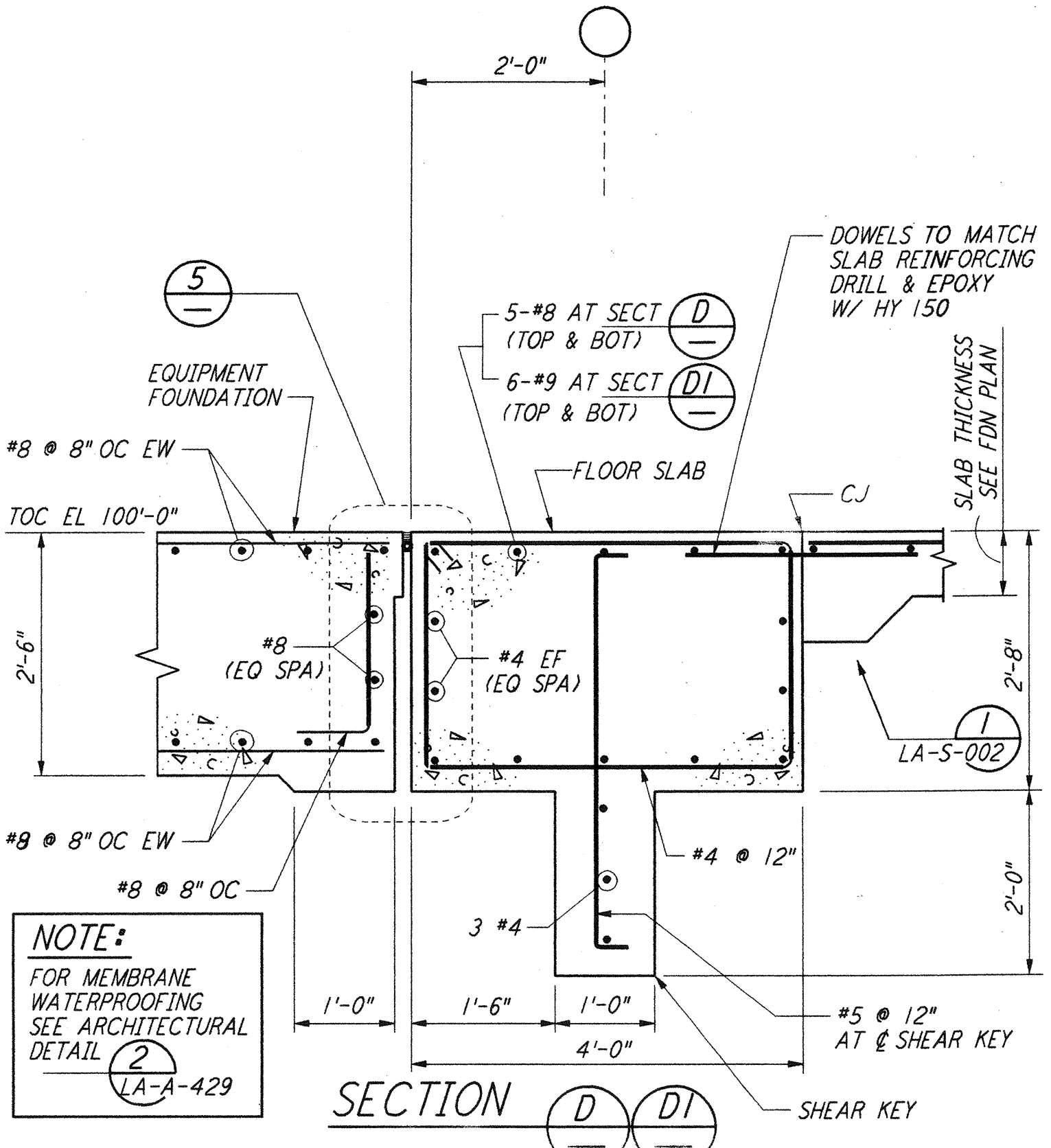
EQUIP FDN & BLDG FDN INTERFACE
 DETAIL 5



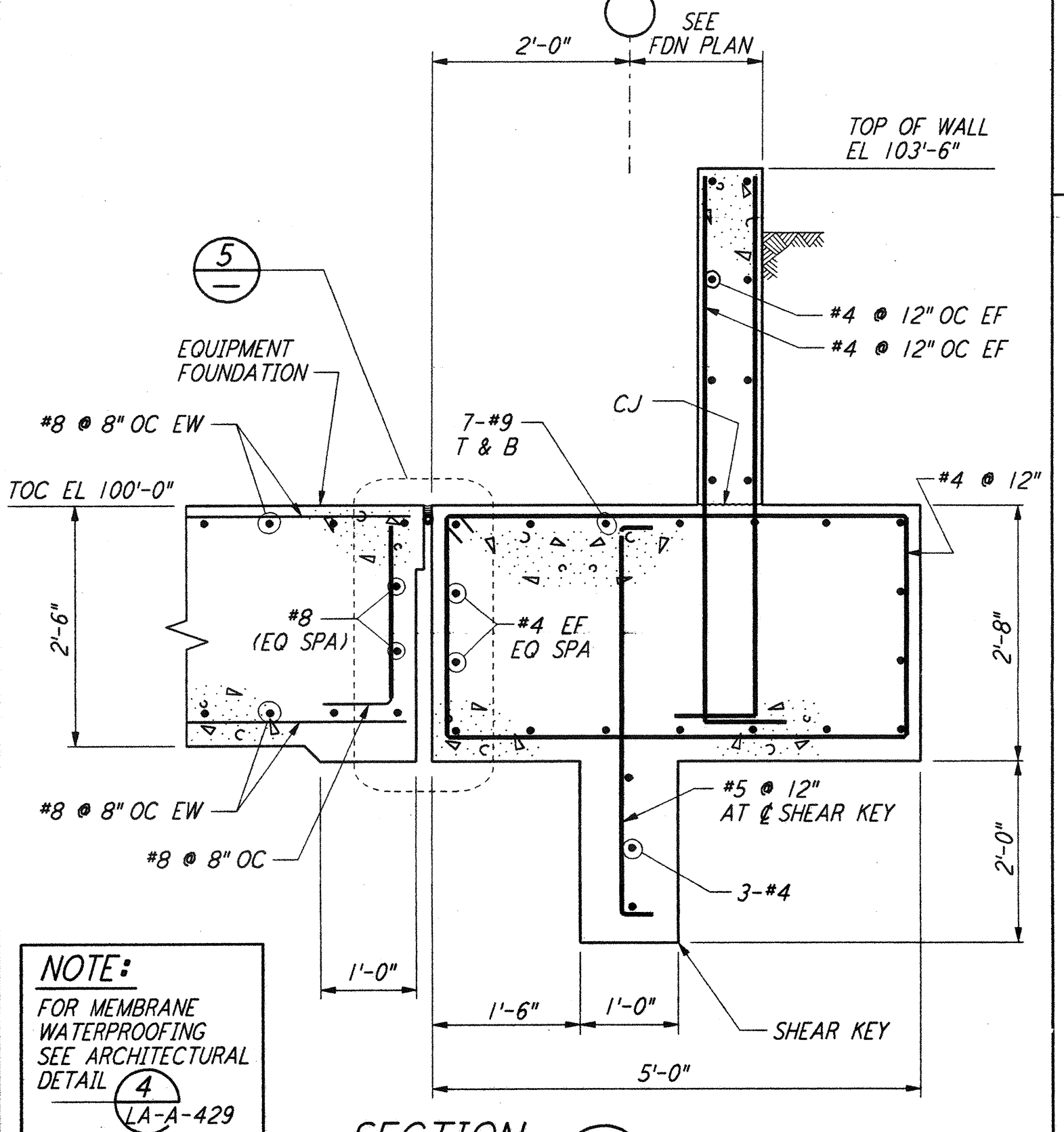
SECTION B



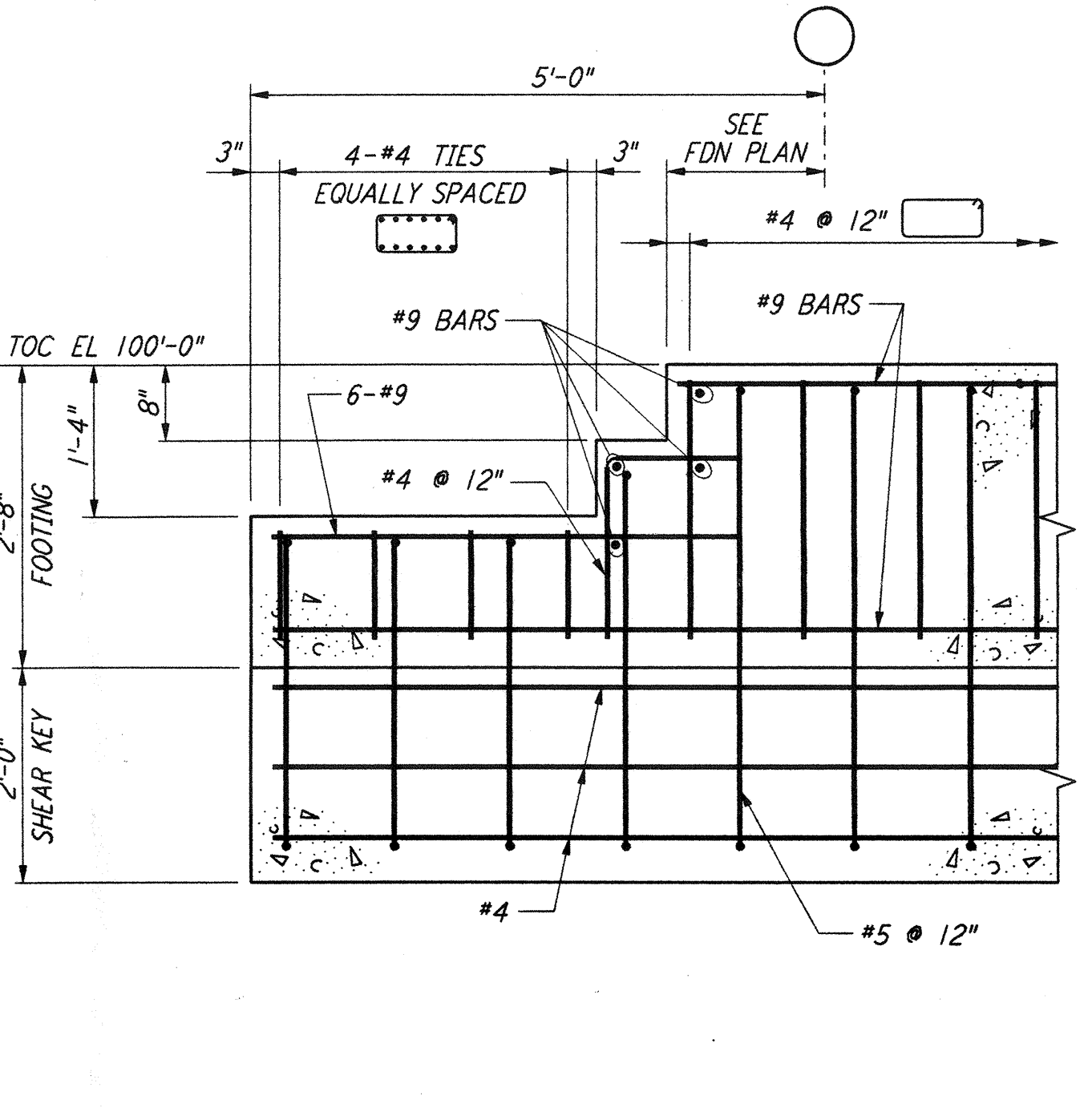
SECTION C



SECTION D



SECTION E



SECTION F

NOTE:
 1. FOR GENERAL NOTES, ABBREVIATIONS AND SYMBOLS SEE DRAWING LA-S-001.

REVISIONS	NO.	DATE	BY	CHKD	ENGR	PROJ	DESCRIPTION
	1	08-07-98	WA	DM	DM	DM	ISSUED FOR AS-BUILT

ISSUED FOR CONSTRUCTION
 DRAWN MCS 11-15-96
 CHECKED DDM 11-15-96
 ENGINEER BP 11-15-96
 PROJ TDM 11-15-96

AS-BUILT DRAWINGS

PARSONS
 100 WEST WALNUT STREET
 PASADENA, CALIFORNIA

LIGO
 CALIFORNIA INSTITUTE OF TECHNOLOGY
 MASSACHUSETTS INSTITUTE OF TECHNOLOGY

LIGO-D960909-01-0
 LASER INTERFEROMETER
 GRAVITATIONAL-WAVE OBSERVATORY
 SITE NO. 2 - LIVINGSTON, LOUISIANA

STRUCTURAL STANDARD
 CONCRETE DETAILS SHEET 2

SCALE: NONE
 CONTRACT NUMBER: PPI50969
 PROJECT NUMBER: 8094
 SHEET NUMBER: LA-S-003

This document and the design it covers are the property of PARSONS. They are loaned only with the borrower's expressed written agreement that they will not be reproduced, copied, loaned, exhibited, or used in any other way, except by written consent from PARSONS to the borrower.

This document and the design it covers are the property of PARSONS. They are loaned only with the borrower's expressed written agreement that they will not be reproduced, copied, loaned, exhibited, or used in any other way, except by written consent from PARSONS to the borrower.