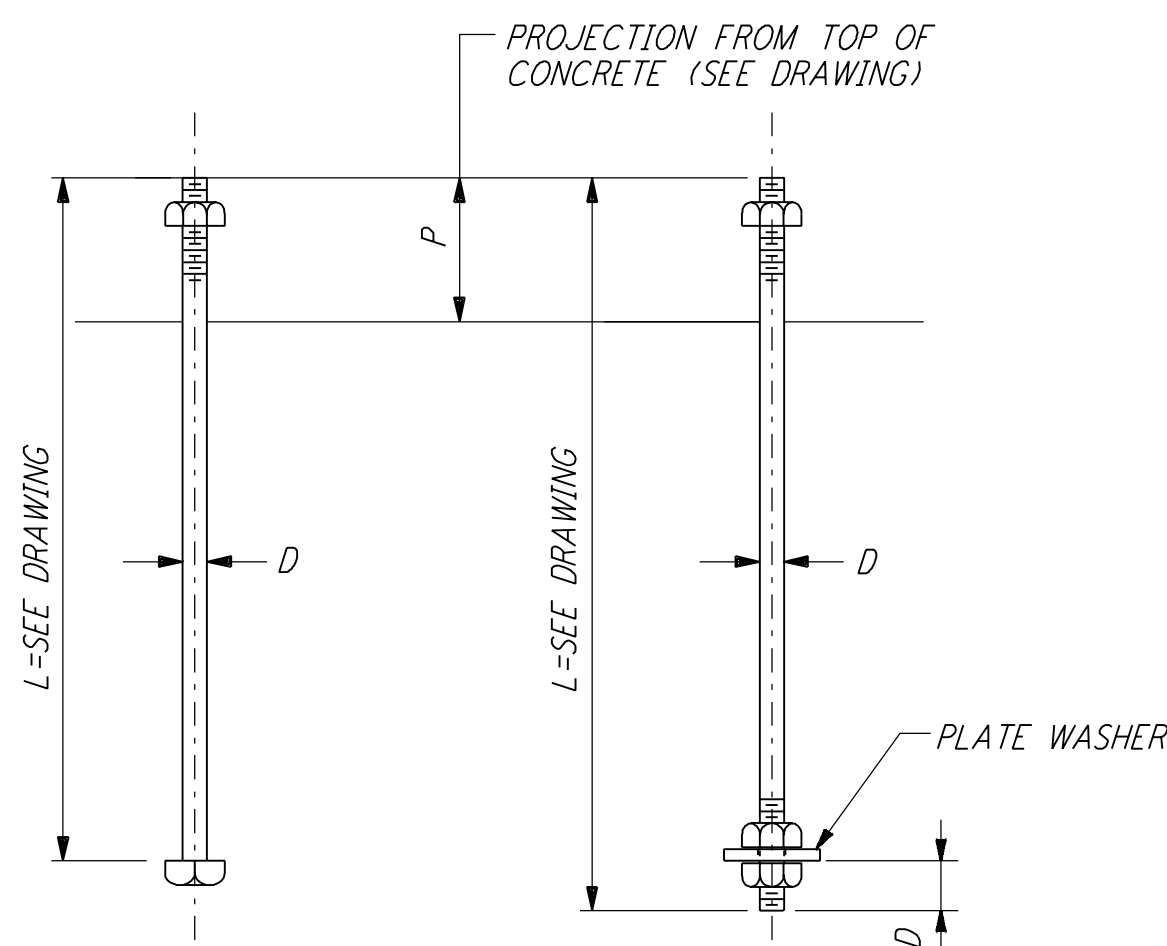


NOTES:

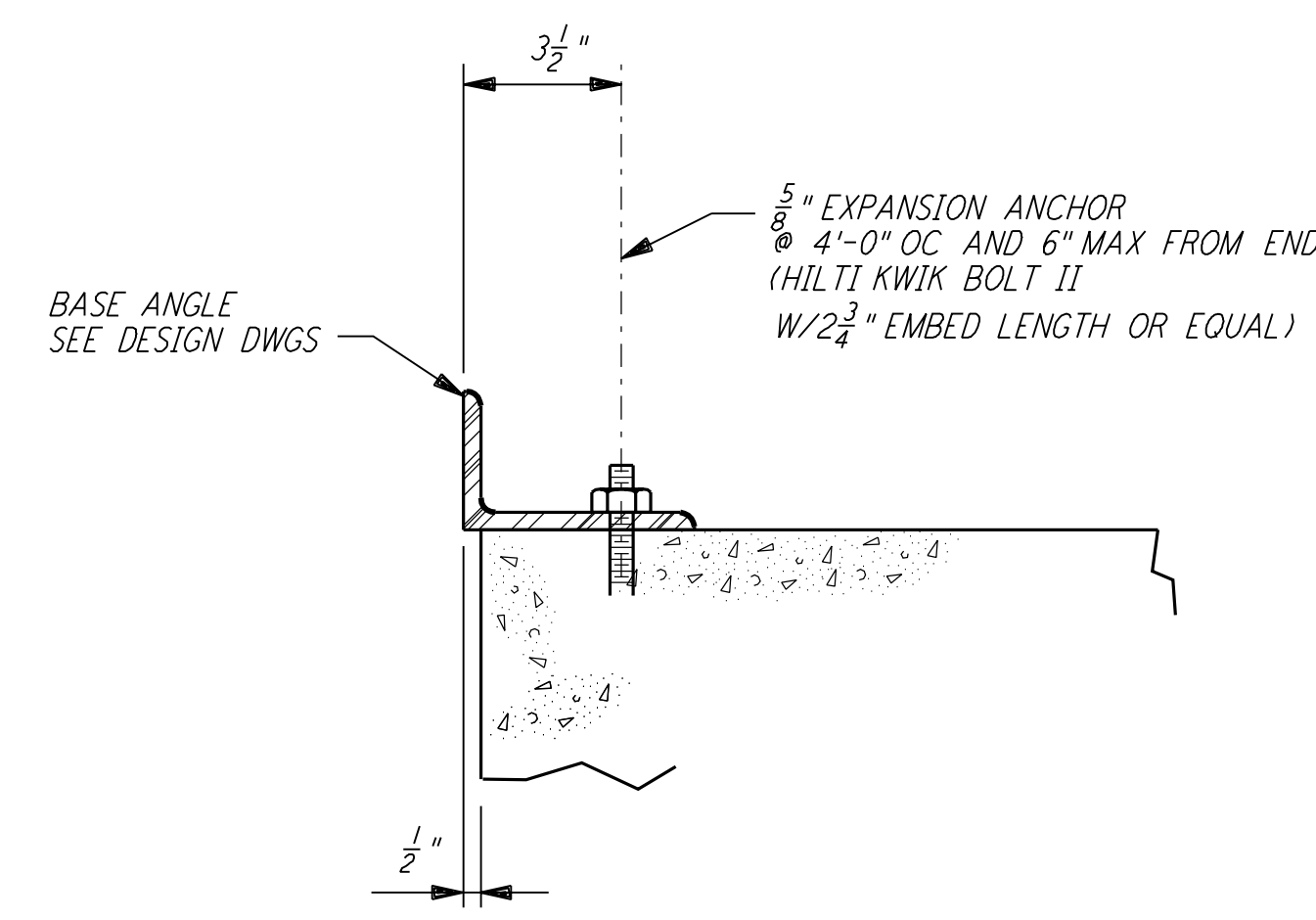
- BOLT MATERIAL SHALL BE IN ACCORDANCE WITH ASTM A307, UNLESS OTHERWISE SPECIFIED.
- USE UNIFIED NATIONAL COARSE THREAD, CLASS 2 FIT.
- USE HEAVY DOUBLE CHAMFER HEX NUTS UP TO 1", AND HEAVY FLAT FACE HEX NUTS LARGER THAN 1".
- PROVIDE 1 HEX NUT FOR EACH BOLT, UNLESS OTHERWISE NOTED ON DESIGN DRAWINGS.
- PLATE WASHER MATERIAL SHALL BE ASTM A36, UNLESS OTHERWISE NOTED.
- FABRICATOR SHALL BUNDLE AND TAG BOLTS BY INDIVIDUAL FOUNDATIONS OR MEMBERS. TAGS SHALL BE WEATHER RESISTANT, WITH MARKS AT LEAST 1/2" HIGH, AND FIRMLY WIRED TO BUNDLES.
- SLEEVES SHALL NOT BE USED UNLESS SPECIFIED ON THE DESIGN DRAWINGS.

ANCHOR BOLT SCHEDULE

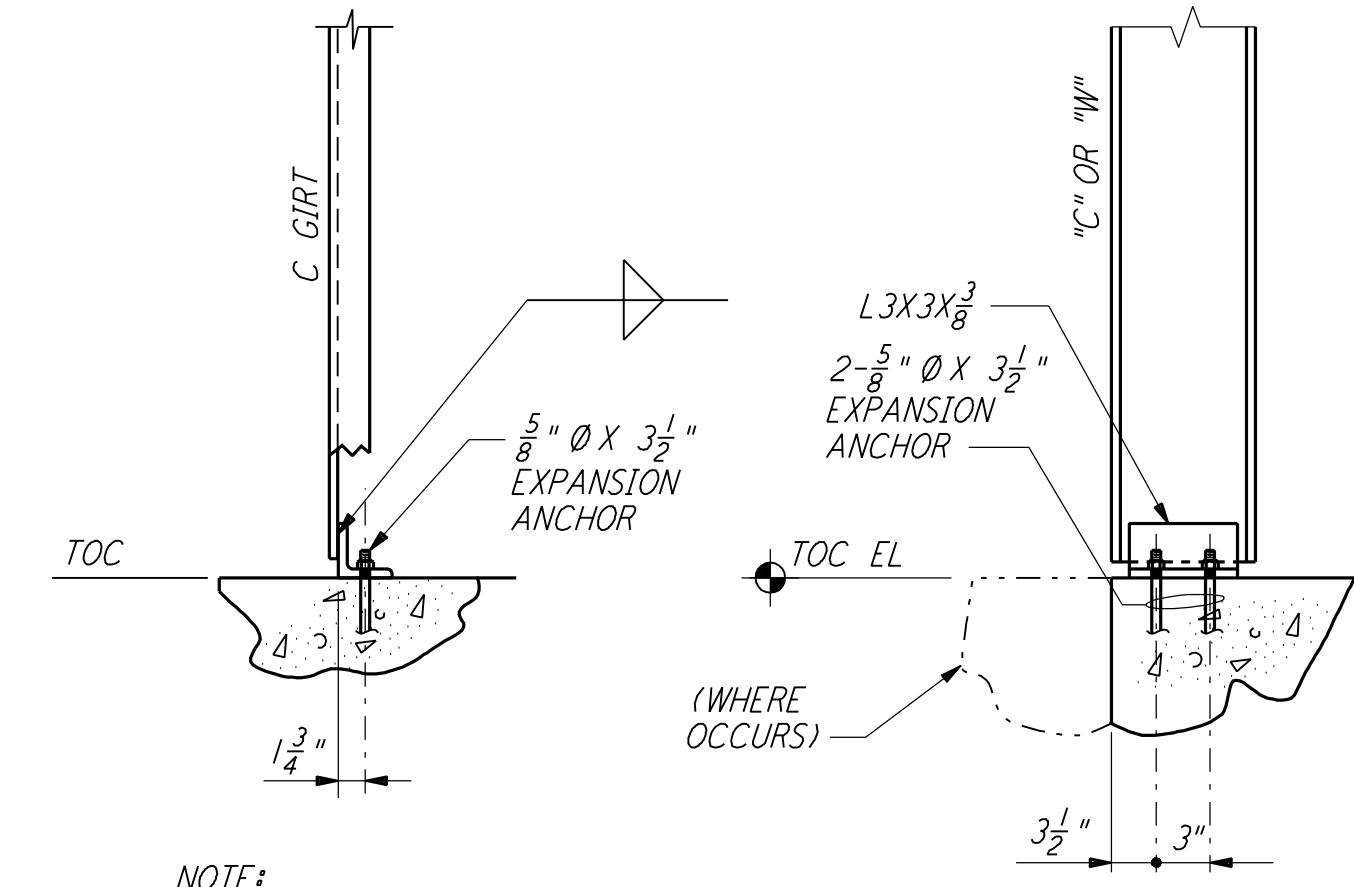
DIA D	PLATE WASHER	SLEEVE IF REQD		THREAD LENGTH	DIA D
		DIA	LENGTH		
3/8"		2"	5"	1 3/4"	3/8"
1/2"		2"	5"	2 1/8"	1/2"
5/8"		2"	7"	2 1/2"	5/8"
3/4"		2"	7"	2 3/8"	3/4"
1"	2 1/2" X 2 1/2" X 3/16"	3"	10"	3 1/2"	1"
1 1/8"	3" X 3" X 1/8"	3"	10"	3 5/8"	1 1/8"
1 1/4"	3 1/2" X 3 1/2" X 1/8"	3"	10"	4"	1 1/4"
1 3/8"	3 3/4" X 3 3/4" X 1/8"	4"	15"	4 3/8"	1 3/8"
1 1/2"	3 3/4" X 3 3/4" X 5/16"	4"	15"	4 3/4"	1 1/2"



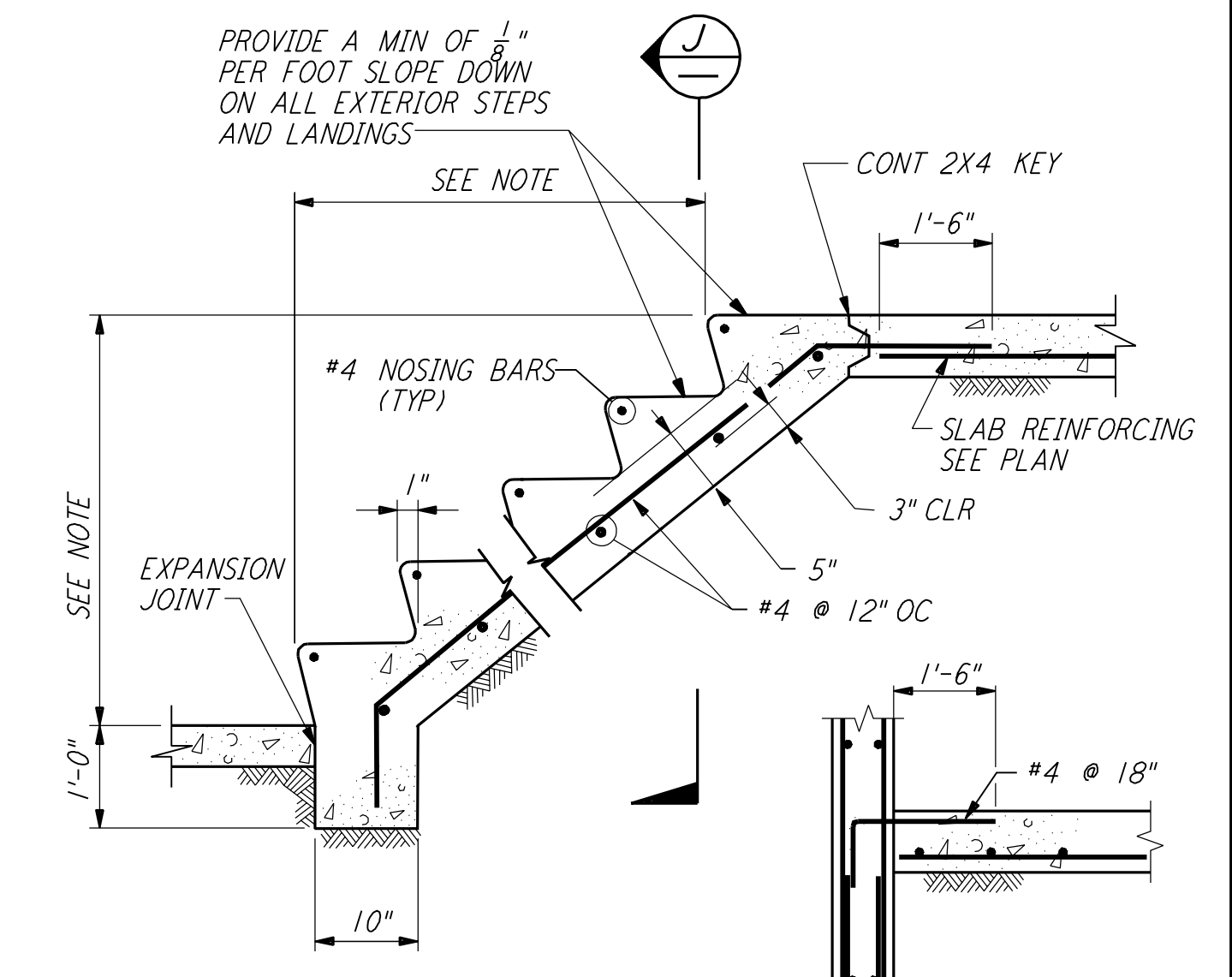
TYPE 1 TYPE 2
ANCHOR BOLTS DETAILS



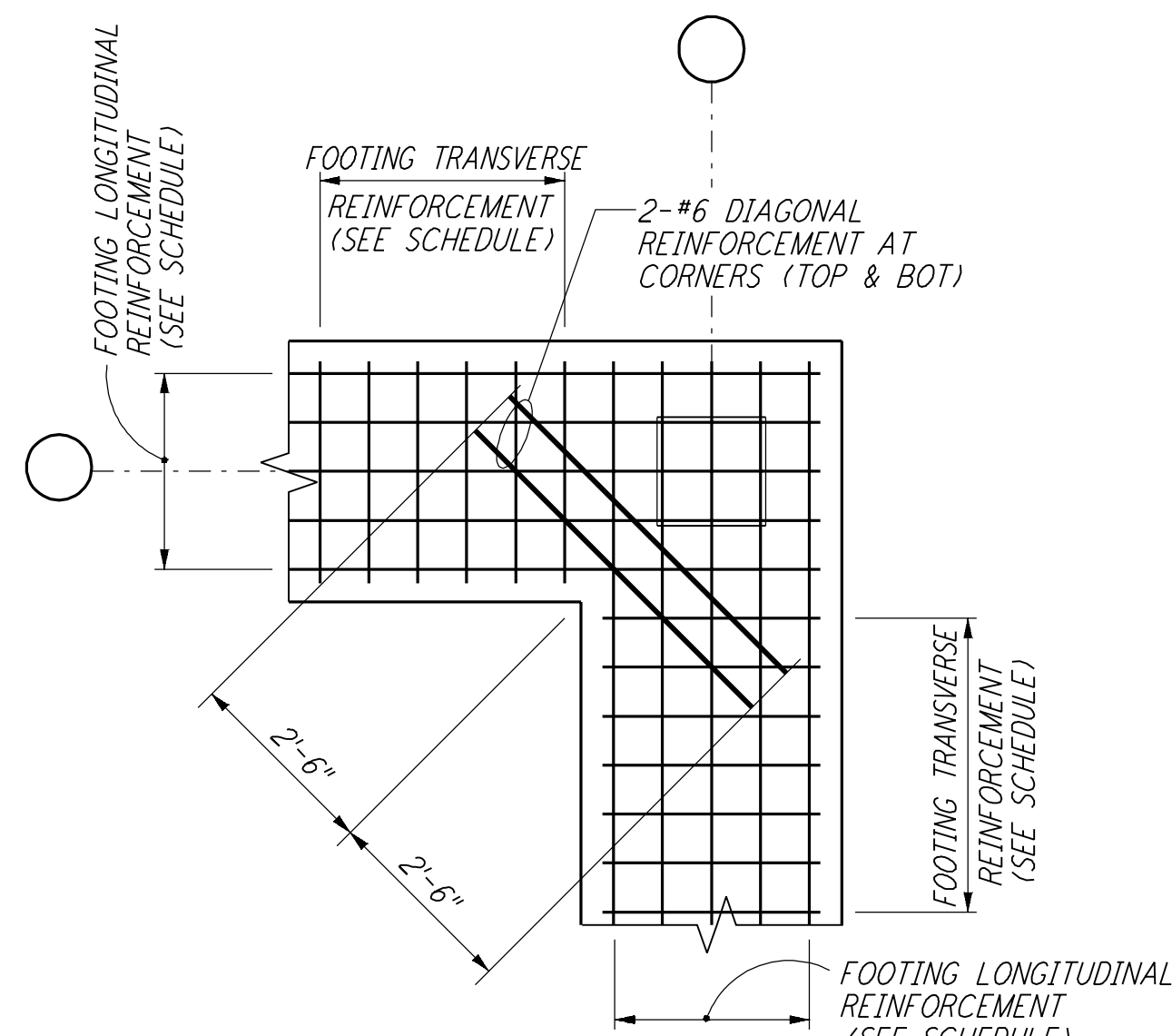
BASE ANGLE CONNECTION
SECTION A



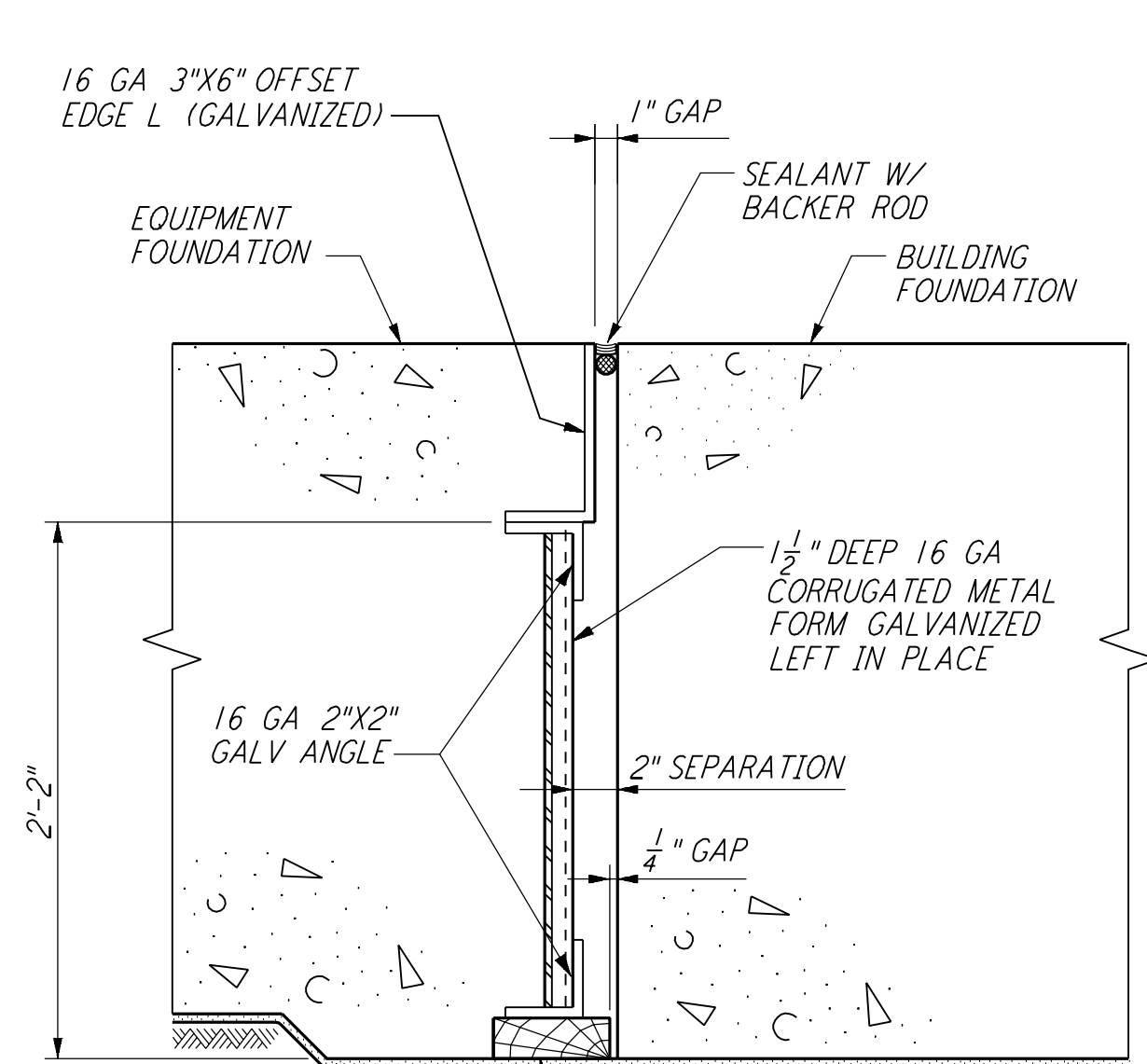
FRONT VIEW SIDE VIEW
DETAIL 2



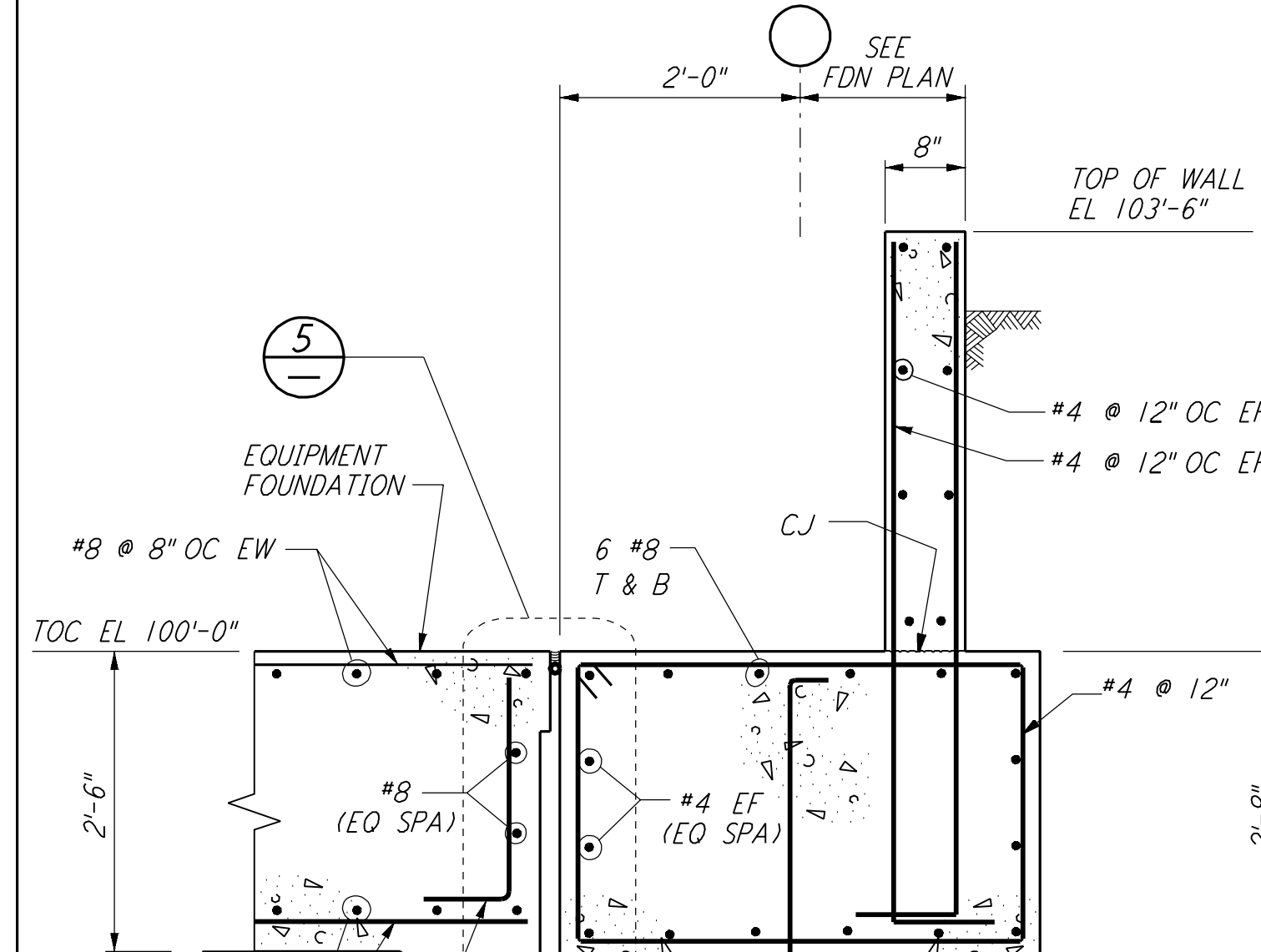
CONCRETE STAIRS ON GRADE
SECTION J



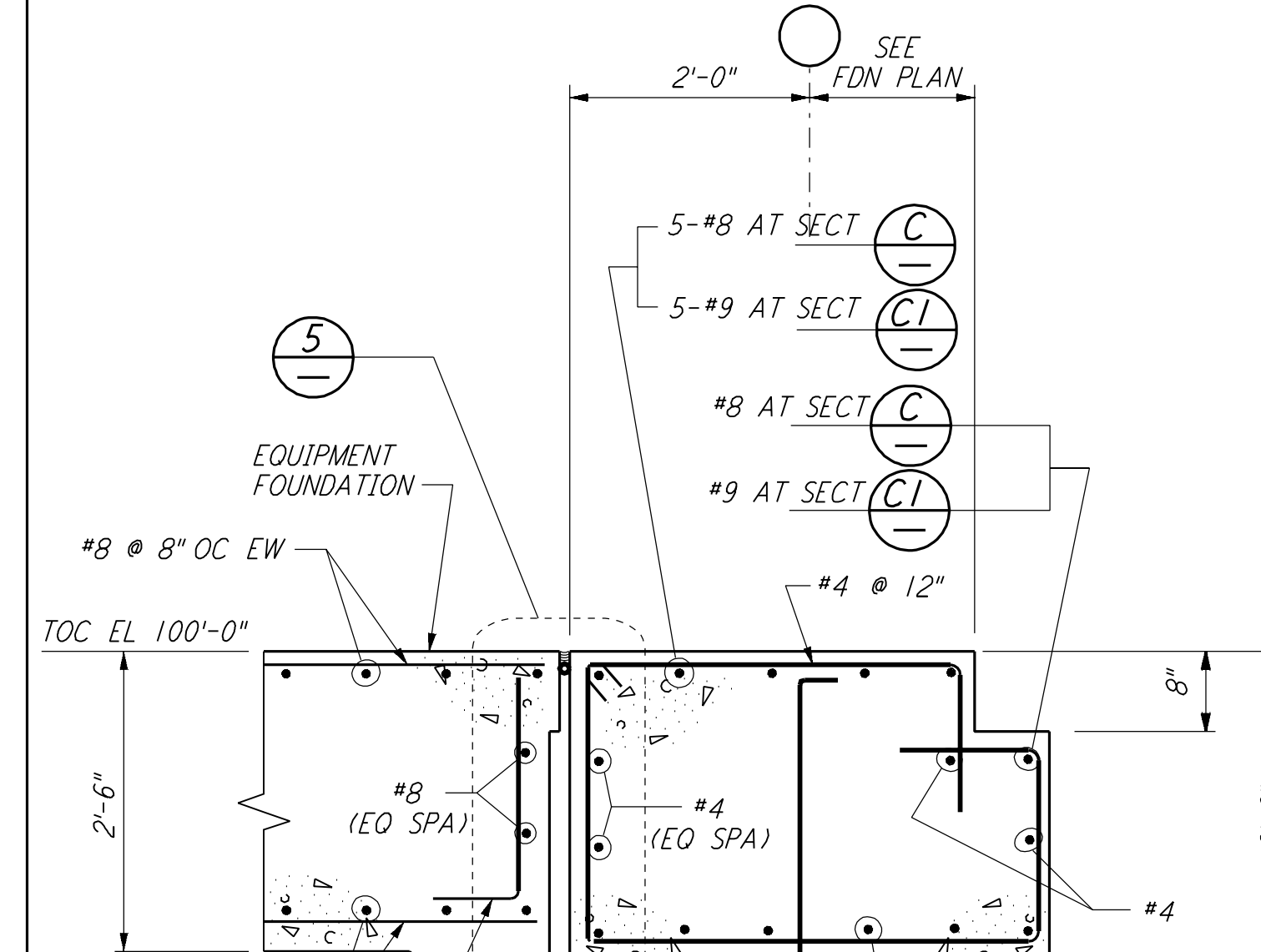
FOOTING DIAGONAL REINFORCEMENT AT CORNERS
DETAIL 4



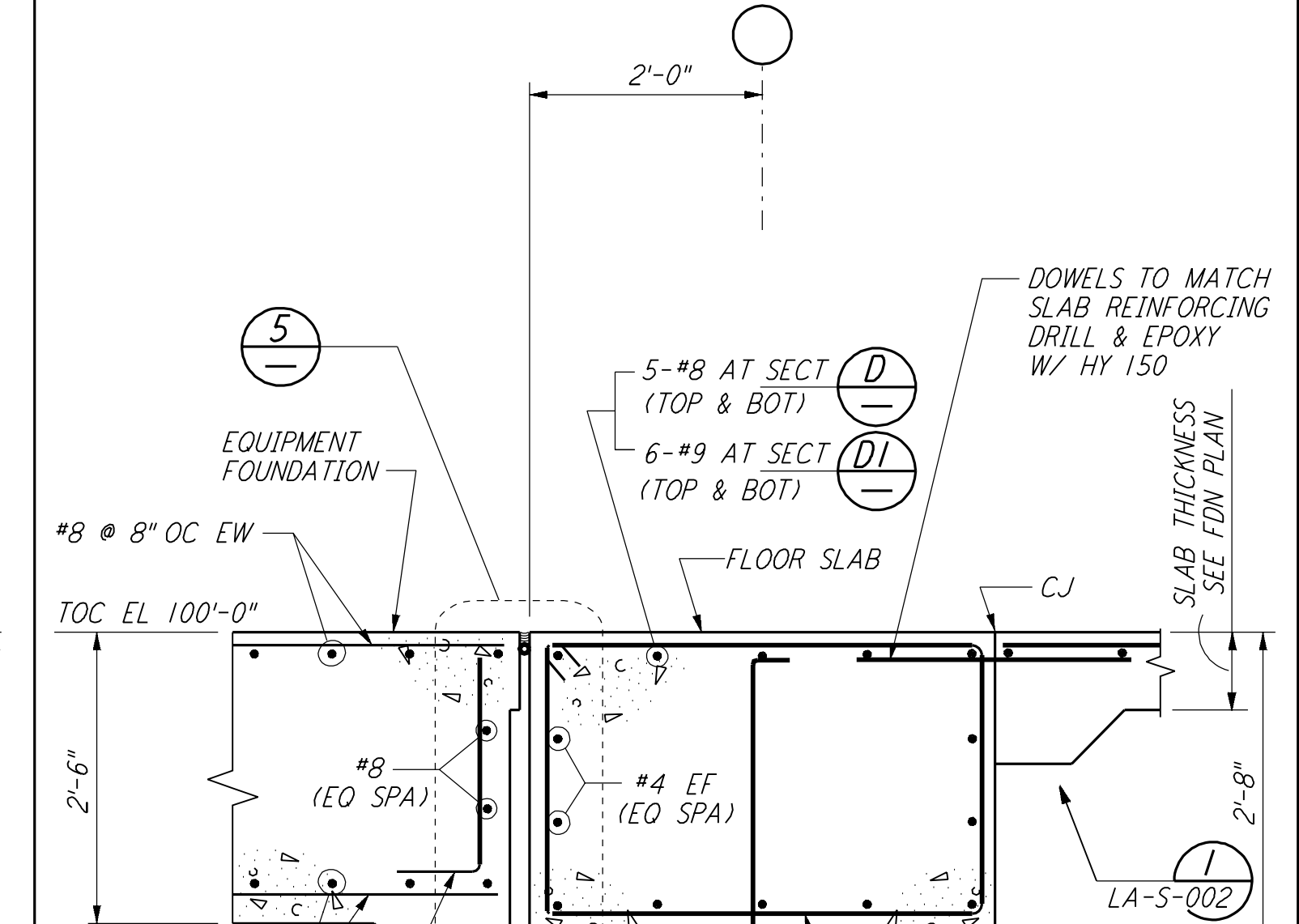
EQUIPT FDN & BLDG FDN INTERFACE
DETAIL 5



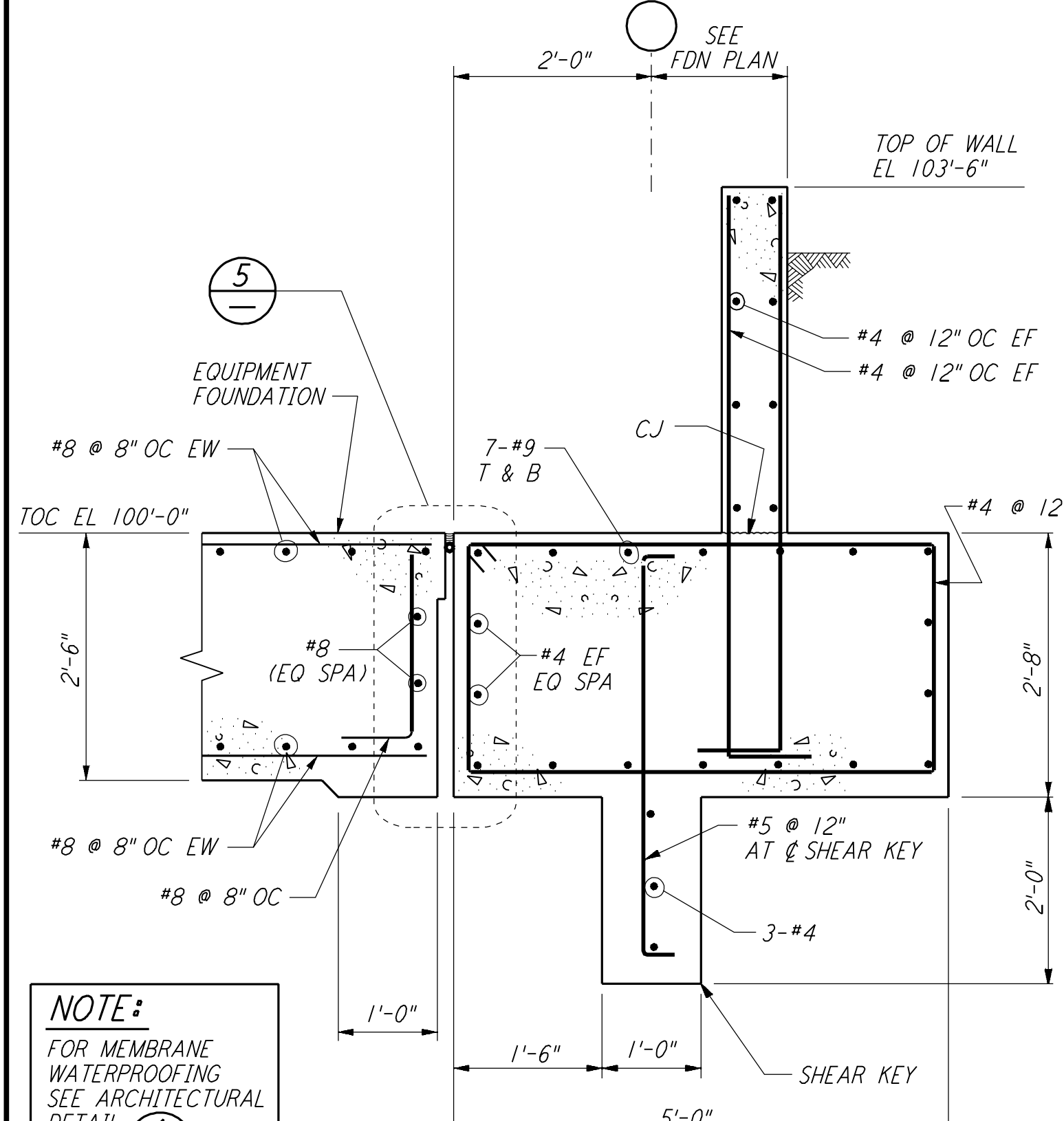
SECTION B



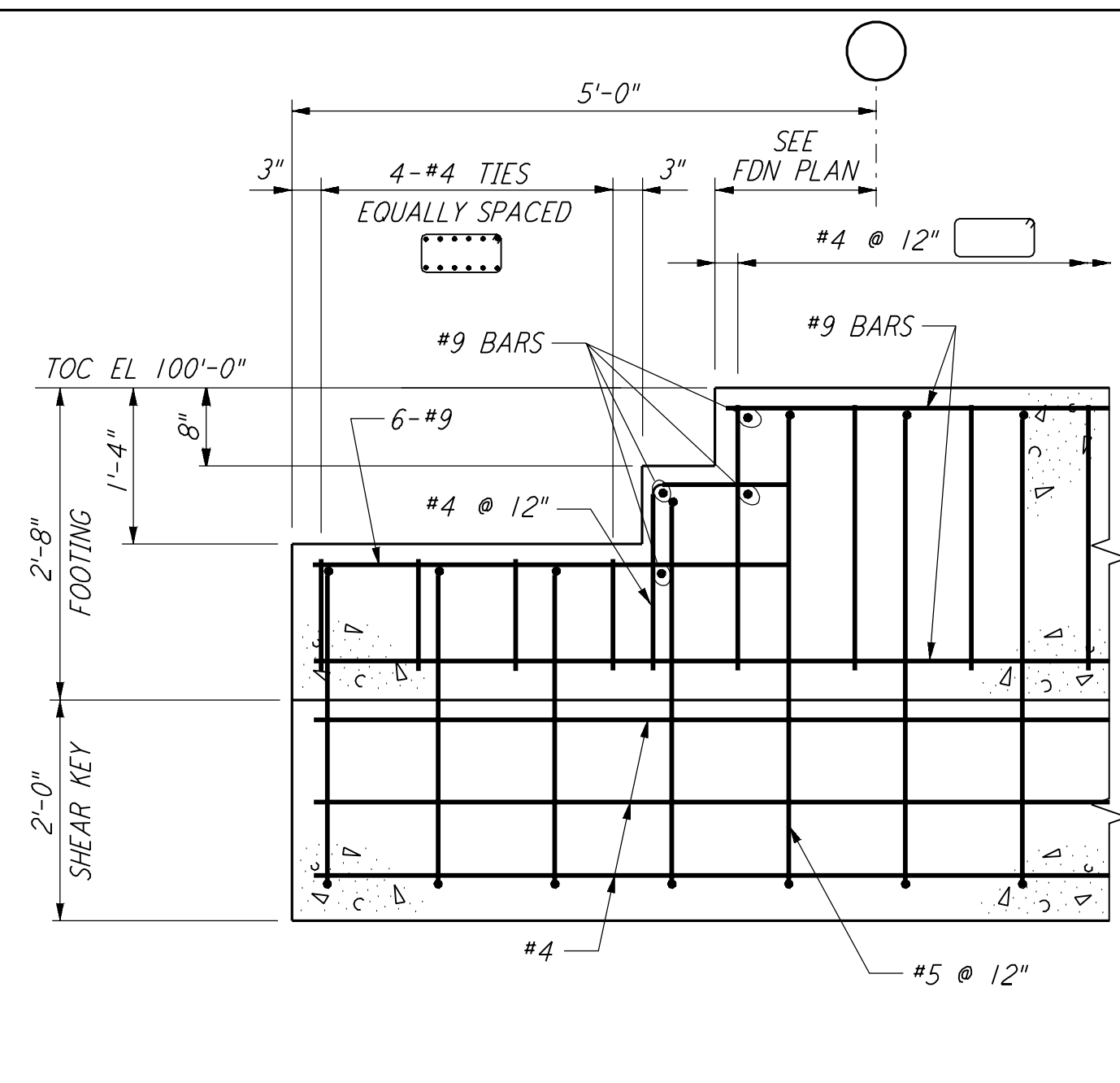
SECTION C



SECTION D



SECTION E



SECTION F

NOTE:
 1. FOR GENERAL NOTES, ABBREVIATIONS AND SYMBOLS SEE DRAWING LA-S-001.

LIGO-D960909-01-O

NO.	DATE	BY	CHKD	ENGR	PROJ	DESCRIPTION
1	08-07-98	WA				ISSUED FOR AS-BUILT

AS-BUILT DRAWINGS

ISSUED FOR CONSTRUCTION	DATE	BY
DRAWN	MCS	11-15-96
CHECKED	DDM	11-15-96
ENGINEER	BP	11-15-96
PROJ	TDM	11-15-96

PARSONS
 100 WEST WALNUT STREET
 PASADENA, CALIFORNIA

LIGO
 CALIFORNIA INSTITUTE OF TECHNOLOGY
 MASSACHUSETTS INSTITUTE OF TECHNOLOGY

TITLE	SCALE	CONTRACT NUMBER	PROJECT NUMBER
STRUCTURAL STANDARD CONCRETE DETAILS SHEET 2	NONE	PP150969	8094

LA-S-003

This document and the design it covers are the property of PARSONS. They are loaned only with the borrower's expressed written agreement that they will not be reproduced, copied, loaned, exhibited, or used in any other way, except by written consent from PARSONS to the borrower.

This document and the design it covers are the property of PARSONS. They are loaned only with the borrower's expressed written agreement that they will not be reproduced, copied, loaned, exhibited, or used in any other way, except by written consent from PARSONS to the borrower.

Wed Oct 7 15:08:47 1998 c:\pilot\st\st003.dwg No. 00100351E30802:01003.PDF