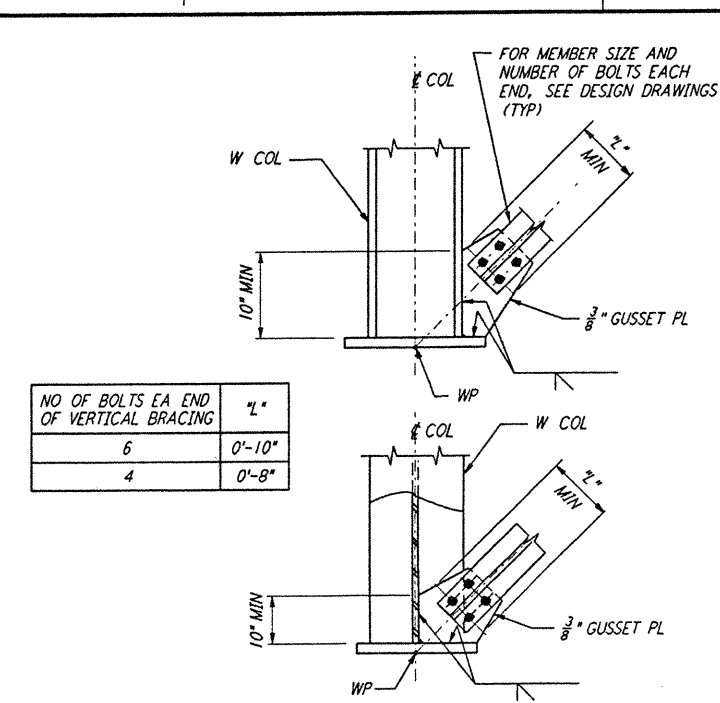
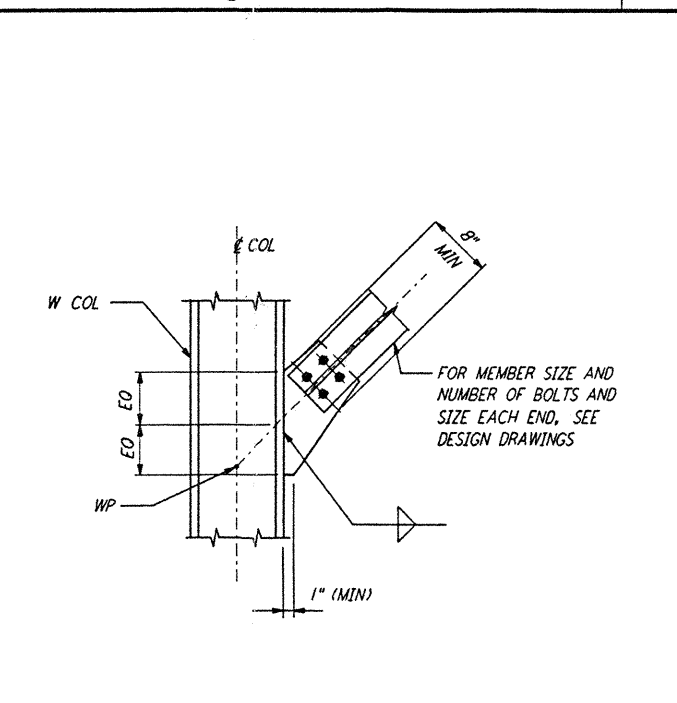


DETAIL 1

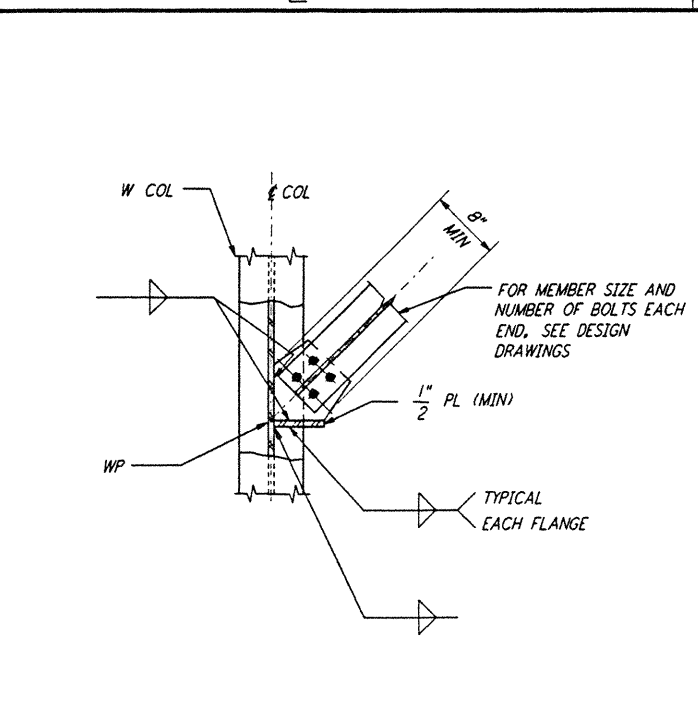


TYPICAL VERTICAL BRACING CONNECTIONS AT BASE OF COLUMN
 DETAIL 2

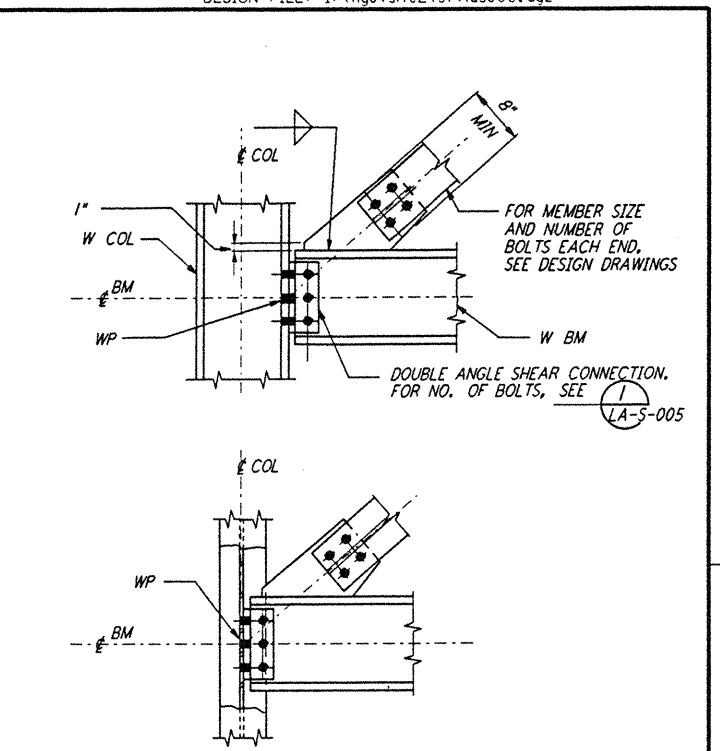
NO OF BOLTS EA END OF VERTICAL BRACING	"L"
6	0'-10"
4	0'-8"



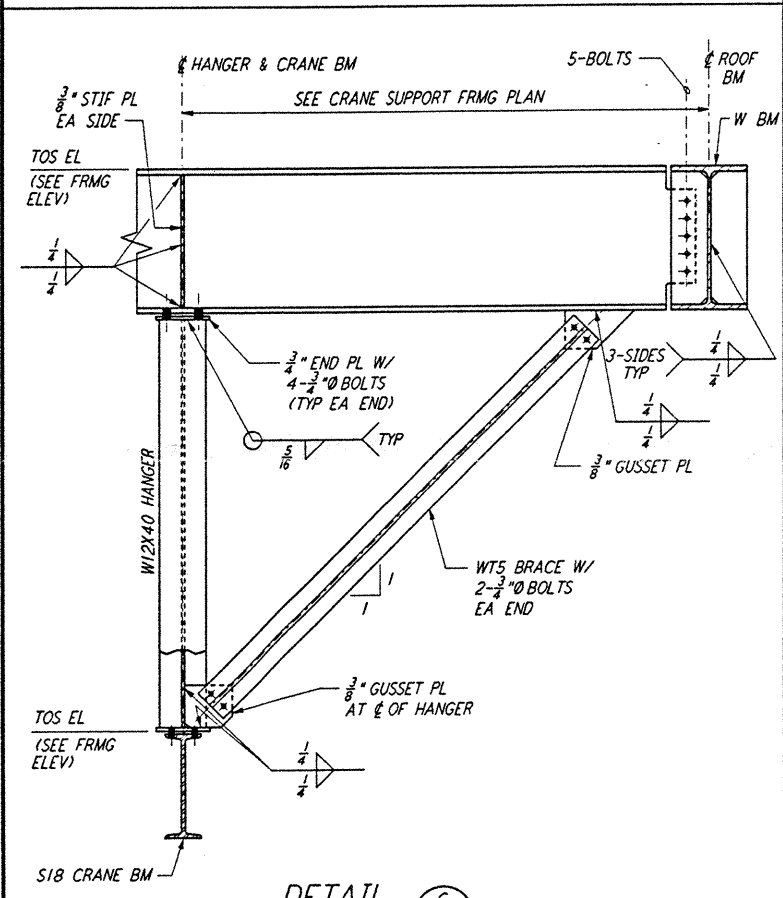
BRACE TO COLUMN FLANGE CONNECTION
 DETAIL 3



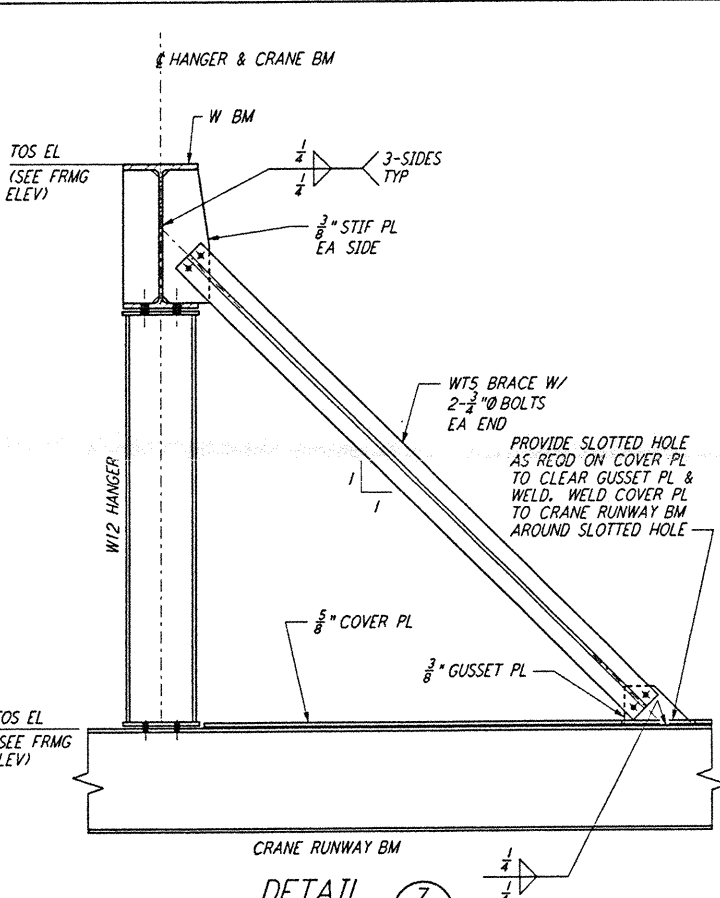
BRACE TO COLUMN WEB CONNECTION
 DETAIL 4



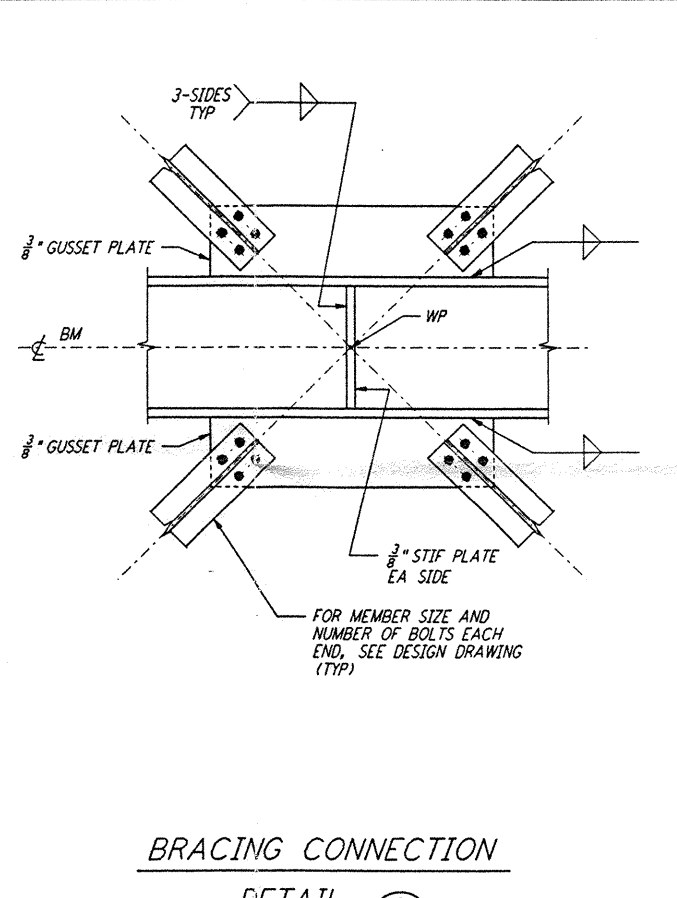
TYPICAL VERTICAL BRACING CONNECTIONS
 DETAIL 5



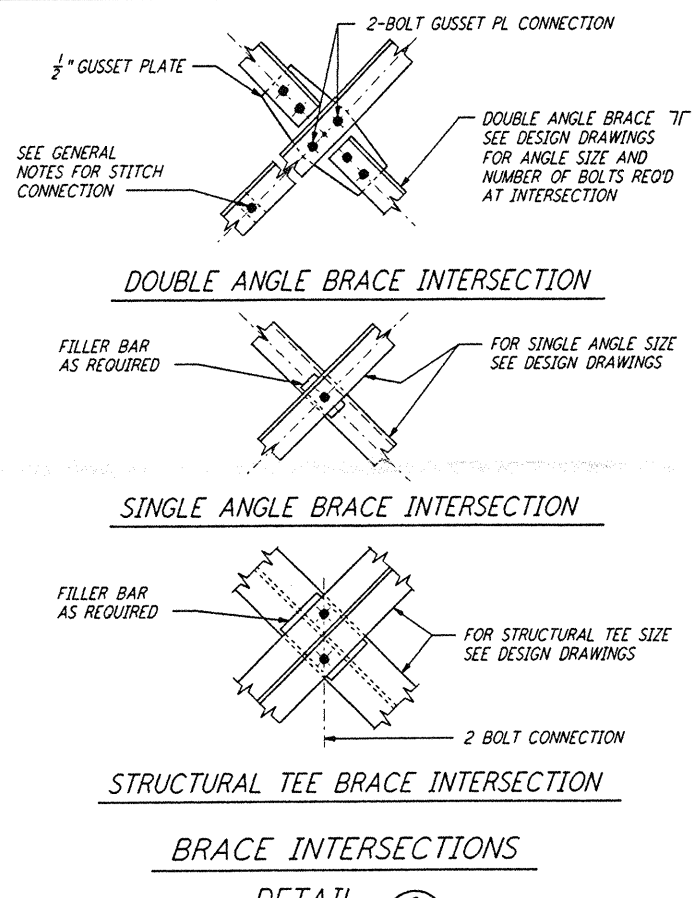
DETAIL 6



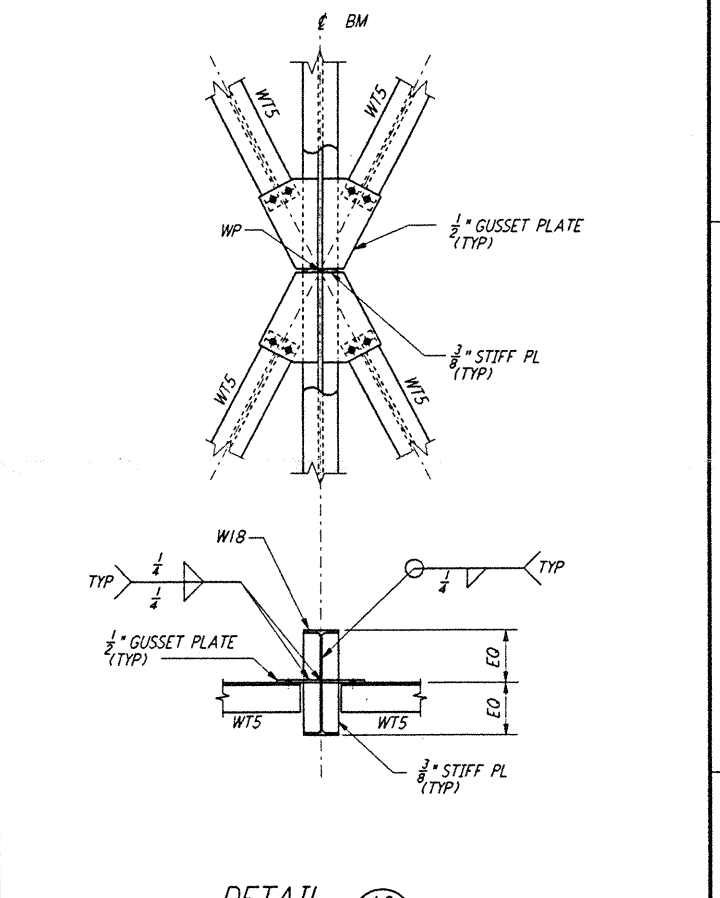
DETAIL 7



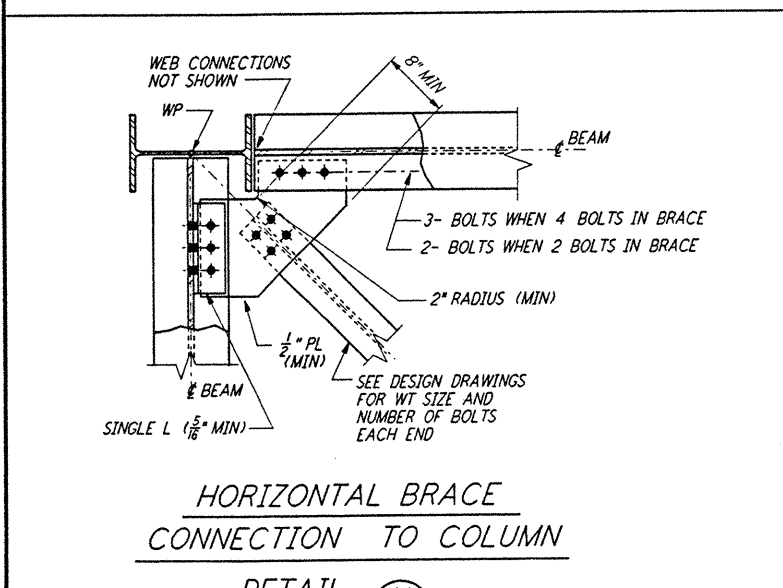
BRACING CONNECTION
 DETAIL 8



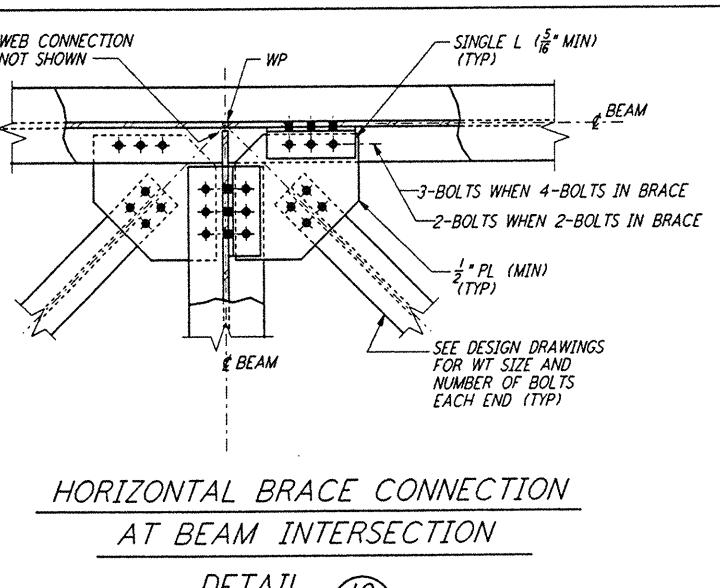
BRACE INTERSECTIONS
 DETAIL 9



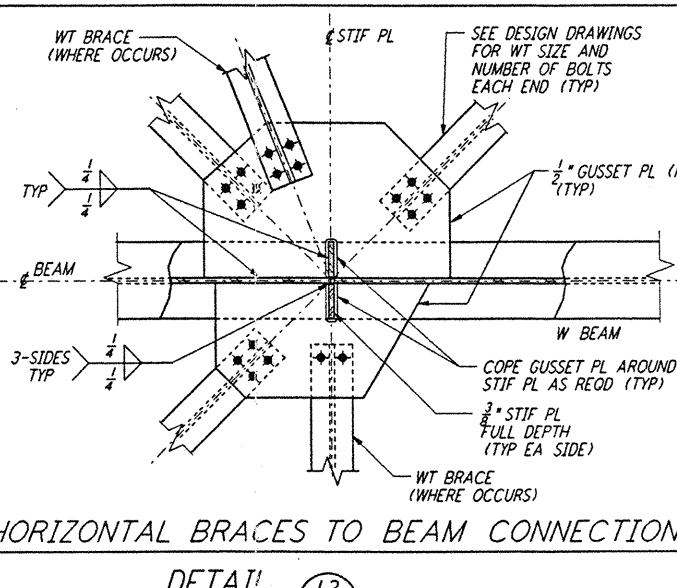
DETAIL 10



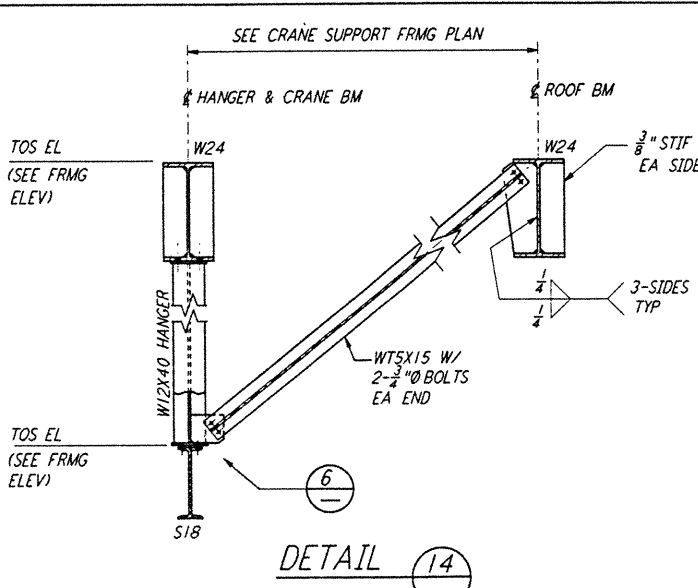
HORIZONTAL BRACE CONNECTION TO COLUMN
 DETAIL 11



HORIZONTAL BRACE CONNECTION AT BEAM INTERSECTION
 DETAIL 12



HORIZONTAL BRACES TO BEAM CONNECTION
 DETAIL 13



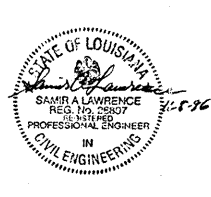
DETAIL 14

NOTES:
 1. FOR GENERAL NOTES, ABBREVIATIONS AND SYMBOLS SEE DRAWING LA-S-001.
 2. ALL ANGLE VERTICAL BRACING END CONNECTIONS SHALL HAVE TWO BOLTS EACH END UNLESS NOTED OTHERWISE ON THE DESIGN DRAWINGS.

This document and the design it covers are the property of PARSONS. They are loaned only with the borrower's expressed written agreement that they will not be reproduced, copied, loaned, exhibited, or used in any other way, except by written consent from PARSONS to the borrower.

NO.	DATE	BY	CHKD	ENGR	PROJ	DESCRIPTION

ISSUED FOR CONSTRUCTION	
DRAWN	MCS 11-15-96
CHECKED	SP 11-15-96
ENGINEER	SP 11-15-96
PROJ	SP 1115/96



PARSONS
 100 WEST WALNUT STREET
 PASADENA, CALIFORNIA

LIGO
 CALIFORNIA INSTITUTE OF TECHNOLOGY
 MASSACHUSETTS INSTITUTE OF TECHNOLOGY

LASER INTERFEROMETER
 GRAVITATIONAL-WAVE OBSERVATORY
 SITE NO. 2 - LIVINGSTON, LOUISIANA

STRUCTURAL STANDARD
 STRUCTURAL STEEL
 CONNECTION DETAILS SHEET 3

SCALE: NONE
 SHEET NUMBER: PPI50969
 PROJECT NUMBER: 8094
LA-S-006