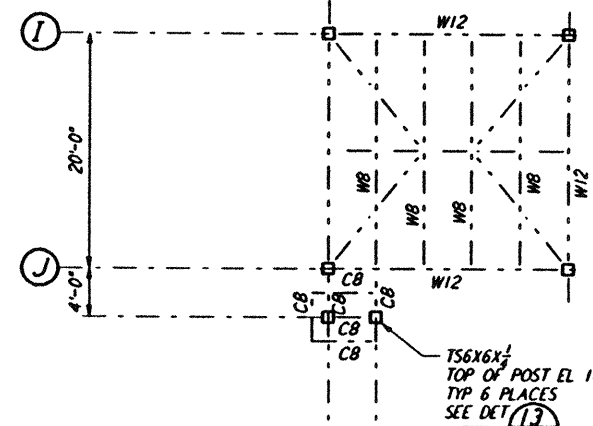
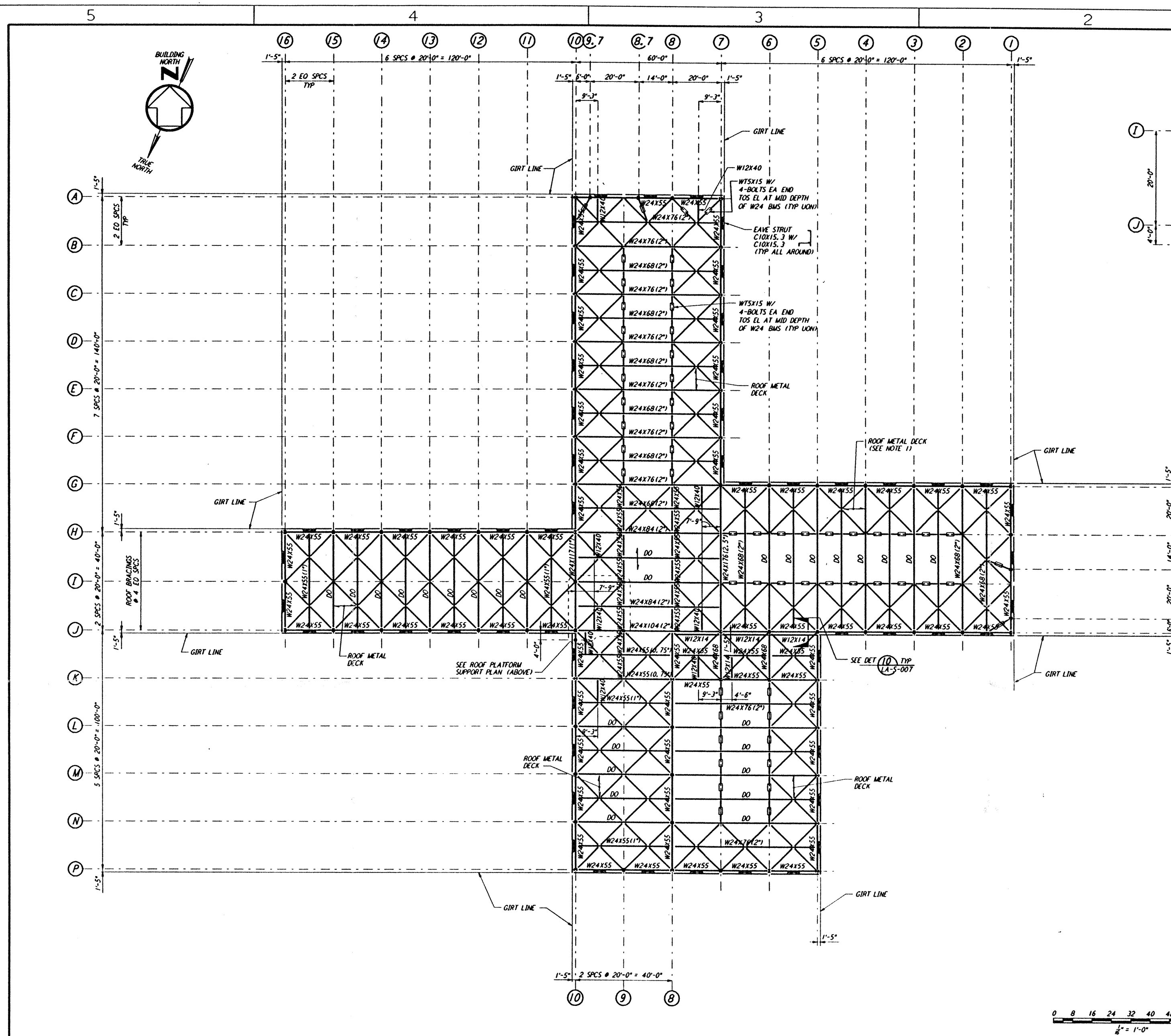
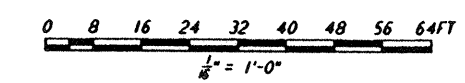
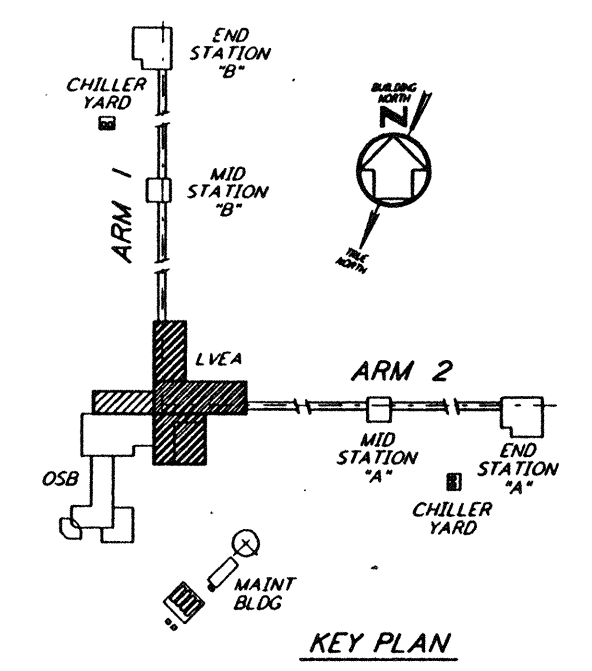


Mon Jul 22 17:23:49 1996 S3-V18B2 J:\PLOTS\QUEUES\18B2\ST105.PRF
 This document and the design it covers are the property of PARSONS. They are loaned only with the borrower's expressed written agreement that they will not be reproduced, copied, loaned, exhibited, or used in any other way, except by written consent from PARSONS to the borrower.



NOTES:
 1. PLATFORM SHALL BE DESIGN AND SUPPLIED BY CONTRACTOR. FOR INFORMATION NOT SHOWN SEE ARCHITECTURAL DWGS.
 2. FOR SUPPORT POSTS, SEE STRUCTURAL FRAMING ELEVATIONS.
ROOF PLATFORM SUPPORT PLAN
 1/8" = 1'-0"

NOTES:
 1. FOR GENERAL NOTES SEE DRAWING LA-S-001.
 2. NUMBER IN PARENTHESIS FOLLOWING MEMBER SIZE FOR ROOF BEAMS WITH 40 FEET OR 60 FEET SPAN INDICATES REQUIRED CAMBER IN INCHES.
 3. FOR BEAM TO BEAM CONNECTIONS, SEE DETAIL (3) TYP LON LA-S-005
 4. FOR BEAM TO COLUMN CONNECTIONS, SEE DETAILS (6) & (4) TYP LON LA-S-004 & LA-S-007
 5. FOR HORIZONTAL BRACING CONNECTIONS, SEE DETAILS (11) LA-S-006 (12) LA-S-006 & (13) LA-S-006



NO.	DATE	BY	CHK'D	ENGR	PROJ	DESCRIPTION
C	7-24-96	MCS	BP	TOM		ISSUED FOR BID
B	6-14-96	MCS	DOM	TOM		FINAL DESIGN REVIEW
A	10-31-95			TOM		PRELIMINARY DESIGN REVIEW

DRAWN	MCS
CHECKED	
ENGINEER	
PROJ	

PARSONS
 100 WEST WALNUT STREET
 PASADENA, CALIFORNIA

LIGO
 CALIFORNIA INSTITUTE OF TECHNOLOGY
 MASSACHUSETTS INSTITUTE OF TECHNOLOGY

LASER INTERFEROMETER
 GRAVITATIONAL-WAVE OBSERVATORY
 SITE NO. 2 - LIVINGSTON, LOUISIANA

TITLE	SCALE	CONTRACT NUMBER	PROJECT NUMBER
STRUCTURAL CORNER STATION LVEA ROOF FRAMING PLAN	AS NOTED	PP150969	8094
SHEET NUMBER		PROJECT NUMBER	
LA-S-105		8094	