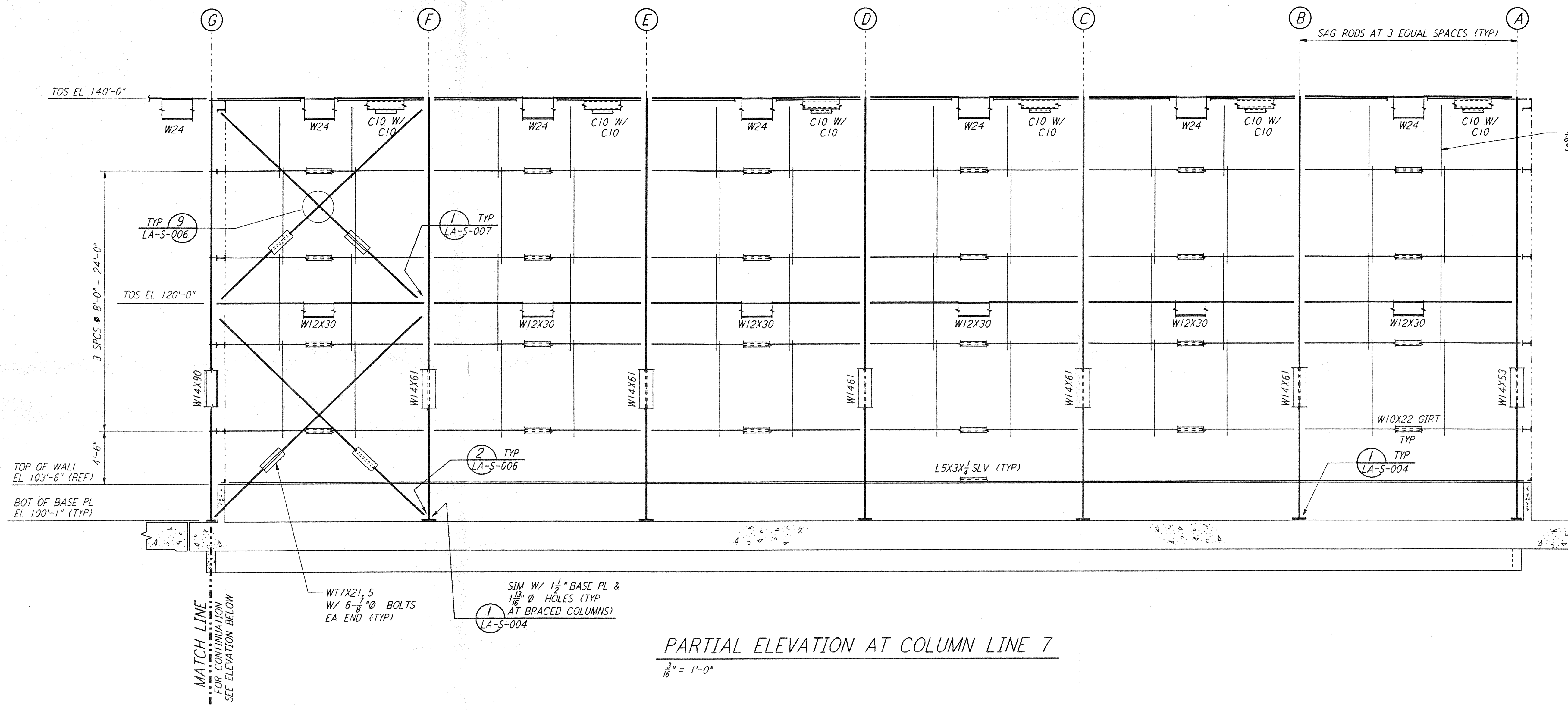


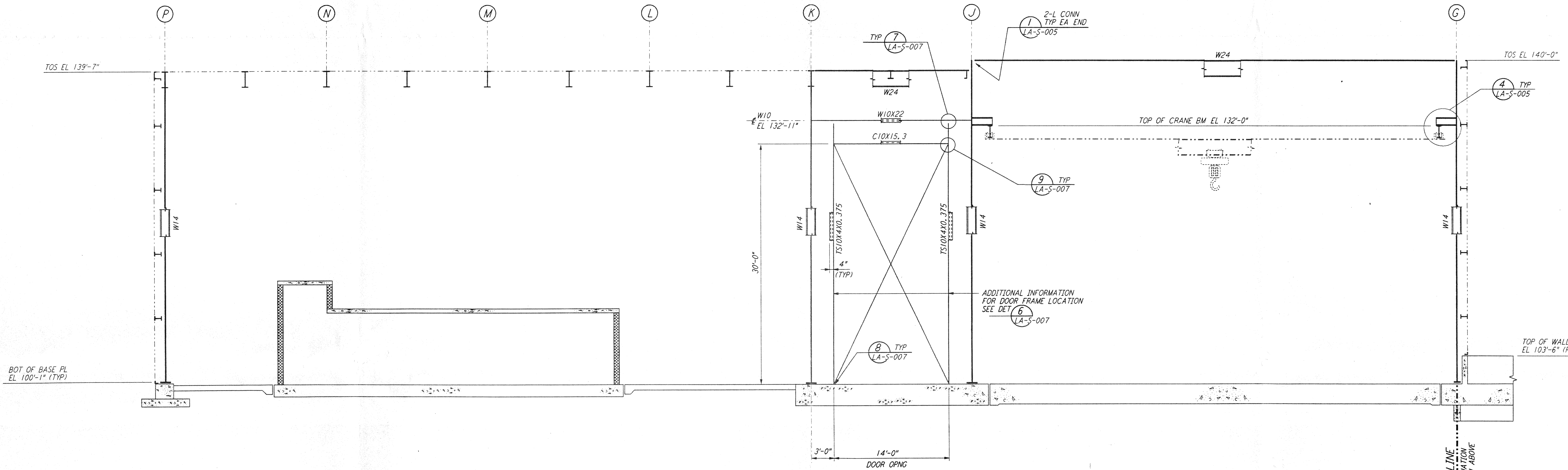
This document and the design it covers are the property of **PARSONS**. They are loaned only with the borrower's expressed written agreement that they will not be reproduced, copied, loaned, exhibited, or used in any other way, except by written consent from **PARSONS** or the borrower.

This document and the design it covers are the property of **PARSONS**. They are loaned only with the borrower's expressed written agreement that they will not be reproduced, copied, loaned, exhibited, or used in any other way, except by written consent from **PARSONS** or the borrower.

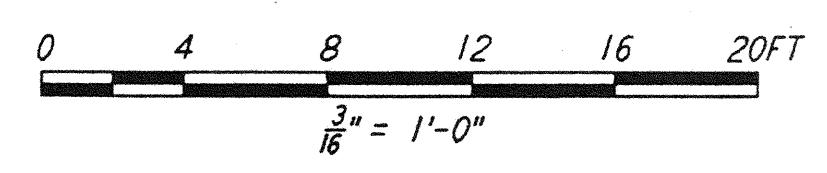


PARTIAL ELEVATION AT COLUMN LINE 7
 $\frac{3}{8}'' = 1'-0''$

NOTE:
 1. FOR NOTES SEE DRAWING LA-S-107.

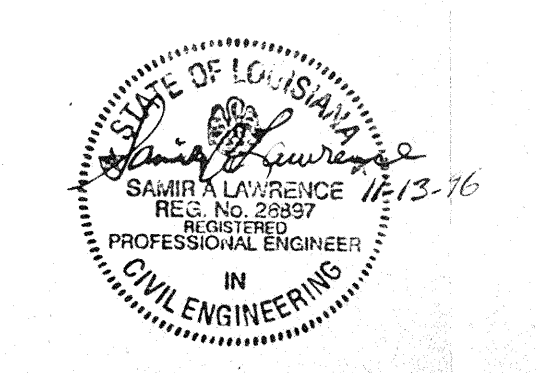


PARTIAL ELEVATION AT COLUMN LINE 7
 $\frac{3}{8}'' = 1'-0''$



DRAWING NO.	DESCRIPTION	NO.	DATE	BY	CHKD	ENGR	PROJ	DESCRIPTION

ISSUED FOR CONSTRUCTION	
DRAWN	MCS 11-15-96
CHECKED	EBN 11-15-96
ENGINEER	BS 11-15-96
PROJ	SDP 11/15/96



PARSONS
 100 WEST WALNUT STREET
 PASADENA, CALIFORNIA

LIGO
 CALIFORNIA INSTITUTE OF TECHNOLOGY
 MASSACHUSETTS INSTITUTE OF TECHNOLOGY

LASER INTERFEROMETER
 GRAVITATIONAL-WAVE OBSERVATORY
 SITE NO. 2 - LIVINGSTON, LOUISIANA

TITLE	SCALE	CONTRACT NUMBER	PROJECT NUMBER
STRUCTURAL CORNER STATION LVEA FRAMING ELEVATIONS SHEET 3	AS NOTED	PP150969	8094
SHEET NUMBER		REVISIONS	
LA-S-109			

L160-0960925-00-0
 LIGOLAF.BDR